



Saskatchewan
Ministry of
Social
Services

Child and Family Services Statistics

As of December 31, 2008

Child and Family Services - Statistics

	Dec 2003	Dec 2004	Dec 2005	Dec 2006	Dec 2007	Dec 2008
Children in care ¹	2892	2851	3075	3128	3246	3588
Children in foster homes	1590	1640	1779	1892	1948	1909
Children living with extended family, Alternate Care/PSI ² and Group Home placements	1302	1211	1296	1236	1298	1679
Children in care on reserve – at March 31 st each year	1133	1099	1123	1159	1183	1238
Foster homes	761	758	752	793	779	770
Foster homes with more than four children	/	/	/	/	131	136
Children living in foster homes with more than four children	/	/	/	/	847	925
Child Protection Investigations	702	650	844	540	393	564
Families receiving child protection services	2156	1979	2205	1927	1971	2282

1 - **These numbers include children who were apprehended by the Minister off-reserve and placed on-reserve.**

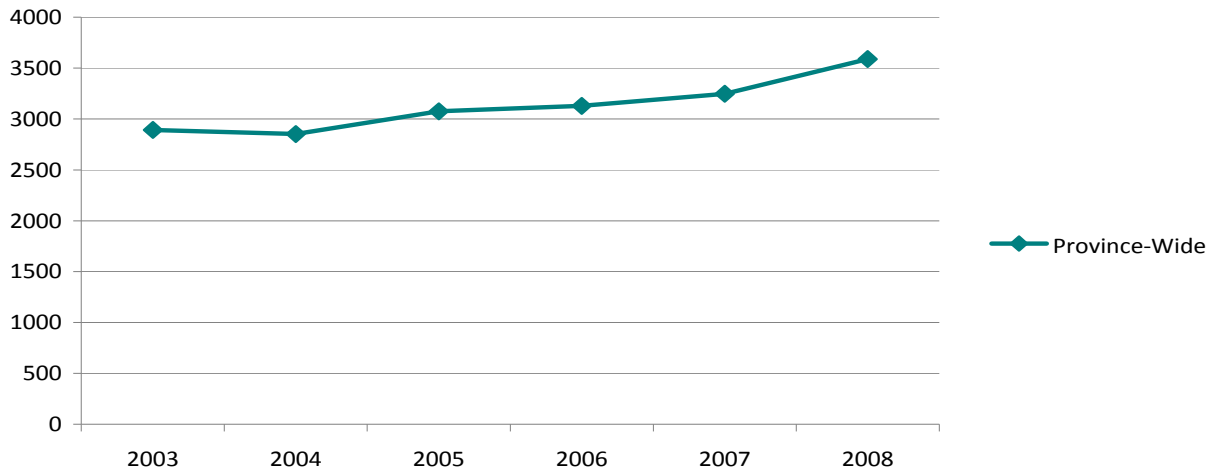
2 - Persons of Sufficient Interest

/ - Data not available

As has been identified previously, Social Services' Child and Family Services Division does not have a current stable information management system. The above data represents a snapshot of data taken at December 31st each year. The data, while reliable, represents the gathering of information from two internal sources within the Ministry, as well as manual counting in some instances. As such, the data is the best available at this time and represents a viable picture of the trends in the data relating to children in care.

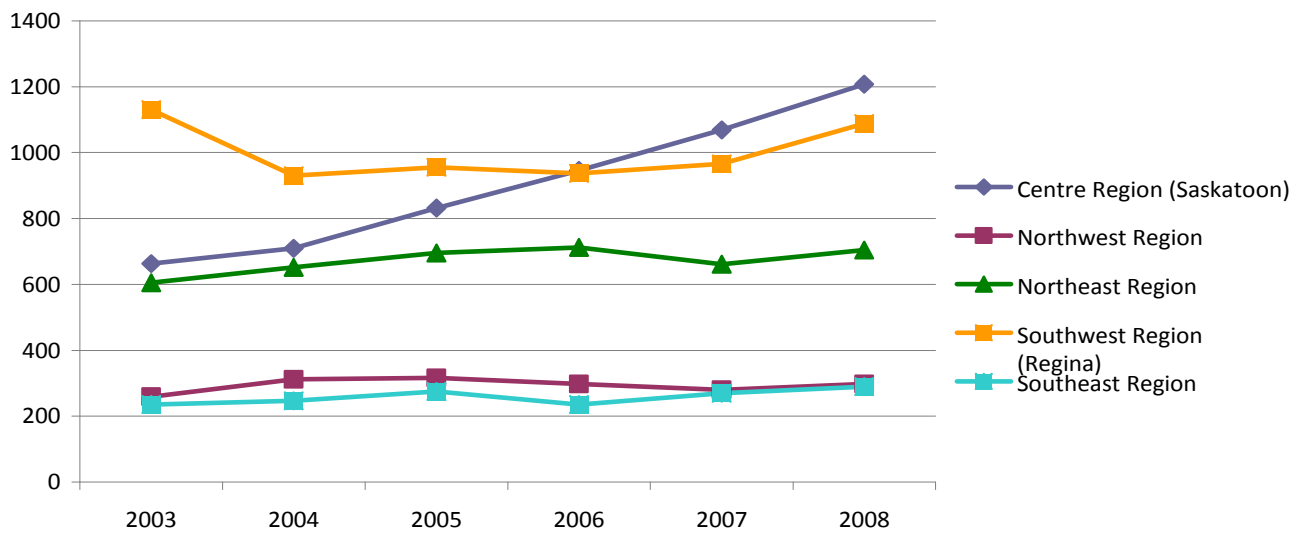
The exception to the above statement relates to the number of children in care on reserve, which is data provided by Indian and Northern Affairs Canada and represents the data at March 31st each year.

Children in Care in Saskatchewan 2003-2008 Province-Wide



*As of December 31 of each year

Children in Care in Saskatchewan 2003 – 2008 By Region



* As of December 31 of each year

Number of Foster Homes over the Recommended Number of Four

	December 2008		December 2007	
# children in the home	# homes	Total Children	# homes	Total Children
5	46	230	57	285
6	31	186	25	150
7	16	112	20	140
8	14	112	13	104
9	13	117	8	72
10	12	120	3	30
11	2	22	1	11
12	1	12	2	24
14	1	14	0	0
15	0	0	1	15
16	0	0	1	16
	136	925	131	847

*as of December 31 of each year