



2016 Specialty Crop Report

saskatchewan.ca

Lentil

Lentil production in Canada reached a record high in 2016, at 3.2 million tonnes, up 28 per cent from the previous year. The increase in lentil production was the result of a 43 per cent gain in harvested area to 5.7 million acres, even though the average yield was 10 per cent lower than last year at 1,248 pounds per acre. Quality was of concern due to inclement weather through much of the growing season. Green lentils require more time to mature than red and suffered greater quality losses. Red lentils make up the majority of seeded lentils in Saskatchewan and had less disease damage this growing season compared to green.

The majority of national lentil production originates in Saskatchewan, where growers reported producing 2.7 million tonnes in 2016. The harvested area was 5.2 million acres in this province, while the average yield declined 16 per cent from 2015, to 1,167 pounds per acre.

Because pulse crop seeding intentions appear to be on target in India with both the Khariff and Rabi crops, it is anticipated that demand for pulses from abroad will decline. Australia is also reporting above average yields for their lentil crops, applying further downward pressure on prices. Seeded area for lentils in Canada is expected to drop in 2017, back to average levels.

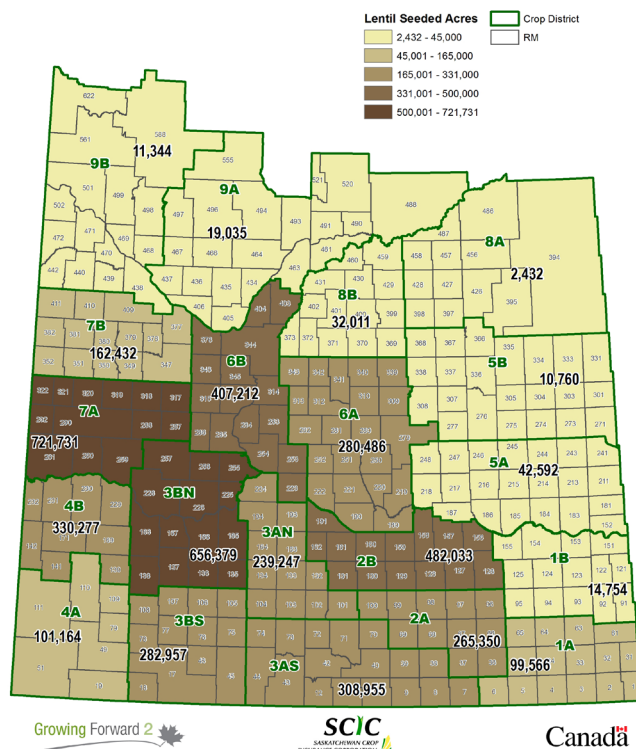
	2007	2008	2009	2010	2011	2012	2013	2014	2015	2016
Lentils										
Seeded Area (thousand acres)										
Saskatchewan	1,435.0	1,745.0	2,355.0	3,340.0	2,460.0	2,430.0	2,620.0	3,010.0	3,750.0	5,285.0
Manitoba										
Alberta		n.a.	50.0	105.0	97.8	85.0	100.0	110.0	285.0	575.0
Prairie Provinces	1,435.0	1,745.0	2,405.0	3,445.0	2,557.8	2,515.0	2,720.0	3,120.0	4,035.0	5,860.0
Production (thousand tonnes)										
Saskatchewan	733.9	1,043.2	1,496.8	1,922.8	1,497.5	1,469.8	2,151.4	1,902.6	2,364.1	2,742.0
Manitoba										
Alberta		n.a.	33.4	82.0	76.0	68.1	110.3	84.4	176.4	506.2
Prairie Provinces	733.9	1,043.2	1,530.2	2,004.8	1,573.5	1,537.9	2,261.7	1,987.0	2,540.5	3,248.2
Yields (pounds per acre)										
Saskatchewan	1,136	1,330	1,413	1,321	1,384	1,351	1,824	1,446	1,392	1,167
Manitoba										
Alberta		n.a.	1,476	1,774	1,715	1,807	2,558	1,724	1,375	1,993
Prairie Provinces	1,136	1,329	1,415	1,335	1,397	1,367	1,850	1,456	1,391	1,248
Average Price in Saskatchewan (\$/tonne)										
	07/08	08/09	09/10	10/11	11/12	12/13	13/14	14/15	15/16	16/17
\$/tonne	502	754	661	498	474	454	453	631	894	
Canadian Exports (thousand tonnes)										
	07/08	08/09	09/10	10/11	11/12	12/13	13/14	14/15	15/16	16/17
'000 tonnes	810.5	973.0	1,386.8	1,104.8	1,147.7	1,638.2	1,752.7	2,179.3	2,144.4	
Source: Statistics Canada										

Crop	Saskatchewan 2016				Saskatchewan (2011-15) average			
	Area		Yield	Production	Area		Yield	Production
	Seeded	Harvested		'000	Seeded	Harvested		'000
	'000 acres	'000 acres	lbs/ac	tonnes	'000 acres	'000 acres	lbs/ac	tonnes
Large Green Lentils	1,050.0	1,030.0	1,058.0	494.4	936.0	920.0	1,411.7	590.9
Small Green Lentils	380.0	350.0	1,286.0	204.1	247.0	244.0	1,467.9	163.3
Red Lentils	3,800.0	3,750.0	1,188.0	2,020.8	1,616.0	1,588.0	1,527.7	1,089.9
Other Lentils	55.0	50.0	1,000.0	22.7	55.0	53.6	1,358.8	32.9
Total Lentils	5,285.0	5,180.0	1,167.0	2,742.0	2,854.0	2,805.6	1,479.5	1,876.9

Canadian Lentil Exports				
Top 20 Destinations by Crop Year				
	2014-15		2015-16	
		tonnes		tonnes
	World	2,179,285	World	2,144,445
1	India	647,466	India	847,786
2	Turkey	385,901	Turkey	387,398
3	United Arab Emirates	223,889	United Arab Emirates	190,911
4	Pakistan	107,095	Sri Lanka	98,491
5	Egypt	104,072	Bangladesh	84,953
6	Bangladesh	102,063	Algeria	67,782
7	Sri Lanka	78,308	Pakistan	60,980
8	Algeria	73,592	Egypt	50,593
9	Colombia	71,946	Colombia	44,310
10	Spain	36,285	Spain	38,549
11	United States	35,901	United States	28,239
12	Mexico	34,341	Peru	22,293
13	Peru	32,862	Ecuador	19,757
14	Italy	21,599	Italy	18,356
15	Chile	20,163	Chile	15,654
16	Ecuador	19,662	Mexico	14,137
17	Brazil	15,807	Brazil	13,118
18	Germany	12,600	Nepal	10,725
19	France	12,290	Germany	10,478
20	United Kingdom	11,902	United Kingdom	10,318

Source: Statistics Canada

2016 Lentil Acres by Crop District Lentil Acres = 4,470,717 (insured by SCIC)



Growing Forward 2

SCIC
Saskatchewan Crop Insurance Corporation

Canada

Lentil Supply and Disposition, Western Canada

Lentil Supply and Disposition, Western Canada											
	Aug 1	Harvested			Total		Use			July 31	Stocks/
	Stocks	Area	Production	Imports	Supply	Exports	Domestic	Seed	F.W.D.*	Stocks	Use
	'000 tonnes	'000 acres	'000 tonnes								
2007/08	199.0	1,425.0	733.9	8.8	941.7	810.5	4.0	59.4	21.8	46.0	5%
2008/09	46.0	1,730.0	1,043.2	7.2	1,096.4	973.0	5.0	81.8	14.6	22.0	2%
2009/10	22.0	2,385.0	1,530.2	8.2	1,560.4	1,386.8	5.0	117.2	11.4	40.0	3%
2010/11	40.0	3,312.0	2,004.8	28.5	2,073.3	1,105.0	6.0	87.0	45.3	830.0	67%
2011/12	830.0	2,482.8	1,573.5	11.4	2,414.9	1,147.7	8.0	85.6	313.6	860.0	55%
2012/13	860.0	2,481.0	1,537.9	8.7	2,406.6	1,638.2	15.0	92.5	193.9	467.0	24%
2013/14	467.0	2,695.0	2,261.7	9.4	2,738.1	1,752.7	15.0	106.1	78.3	786.0	40%
2014/15	786.0	3,008.0	1,987.0	13.2	2,786.2	2,179.3	12.0	131.7	98.2	365.0	15%
2015/16	365.0	4,028.0	2,540.5	15.9	2,921.4	2,145.0	15.0	198.7	488.5	73.0	3%
2016/17	73.0	5,740.0	3,248.2	25.0	3,346.2	2,250.0	20.0	135.0	750.0	191.2	6%
*Feed, waste, and dockage											
Source:	Statistics Canada										

*Feed, waste, and dockage

Source: Statistics Canada

Lentil

Dry Pea

The 2016 pea production in Canada rose by 51 per cent from last year due to an increase in harvested acres of 15 per cent. The average yield was also higher by 32 per cent from the previous year. Many peas were harvested prior to inclement weather where rain and snow inundated much of the western prairies. The quality of the 2016 crop is expected to be average with over 80 per cent grading in the top two grades.

There were problems with root rot in Canada and the United States (U.S.). Intentions are for increased pea acres in the U.S. and Ukraine, putting downward pressure on prices for peas in 2017. However, when compared economically to other crops, pulses compare favorably, so seeded acres should remain steady in 2017.

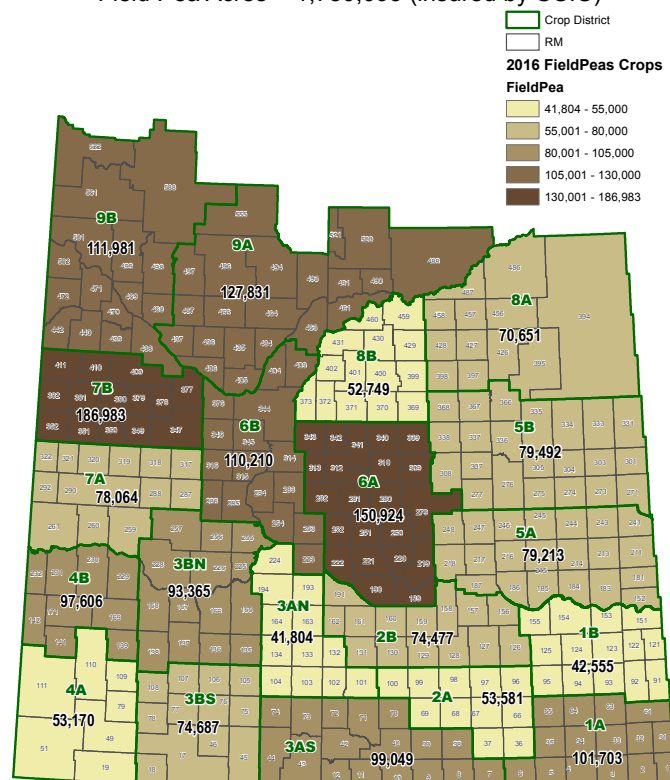
	2007	2008	2009	2010	2011	2012	2013	2014	2015	2016
Dry Peas										
	Seeded Area (thousand acres)									
Saskatchewan	2,925.0	3,165.0	2,875.0	2,610.0	1,700.0	2,600.0	2,265.0	2,600.0	2,135.0	2,180.0
Manitoba	95.0	110.0	85.0	80.0	30.0	55.0	60.0	65.0	70.0	165.0
Alberta	610.0	710.0	800.0	935.0	706.7	1,075.0	1,000.0	1,300.0	1,445.0	1,845.0
Prairie Provinces	3,630.0	3,985.0	3,760.0	3,625.0	2,436.7	3,730.0	3,325.0	3,965.0	3,650.0	4,190.0
	Production (thousand tonnes)									
Saskatchewan	2,309.6	2,725.6	2,612.7	1,973.1	1,671.1	2,068.4	2,571.8	2,256.2	1,778.5	2,346.1
Manitoba	97.7	107.5	100.0	62.6	25.3	64.0	67.7	60.0	78.2	164.2
Alberta	527.5	731.4	666.7	982.5	805.6	1,208.4	1,321.3	1,475.1	1,314.5	2,271.2
Prairie Provinces	2,934.8	3,564.5	3,379.4	3,018.2	2,502.0	3,340.8	3,960.8	3,791.3	3,171.2	4,781.5
	Yields (bushels per acre)									
Saskatchewan	29.5	32.5	33.8	29.8	36.4	30.0	42.4	32.5	30.9	40.1
Manitoba	37.8	35.9	43.2	31.9	34.4	42.7	41.4	34.9	42.9	37.7
Alberta	32.6	38.4	32.7	39.0	42.6	41.9	48.8	42.0	34.0	46.1
Prairie Provinces	30.2	33.6	33.8	32.3	38.2	33.7	44.3	35.7	32.4	42.7
	Average Price in Saskatchewan (\$/tonne)									
	07/08	08/09	09/10	10/11	11/12	12/13	13/14	14/15	15/16	16/17
\$/tonne	257	251	196	234	314	316	266	261	361	
	Canadian Exports (thousand tonnes)									
	07/08	08/09	09/10	10/11	11/12	12/13	13/14	14/15	15/16	16/17
'000 tonnes	2,201.6	2,825.6	2,177.9	3,012.0	2,095.7	2,649.6	2,780.5	3,082.0	2,646.5	
Source: Statistics Canada										

	Saskatchewan 2016				Saskatchewan (2011-15) average			
	Area		Yield	Production	Area		Yield	Production
Crop	Seeded	Harvested			Seeded	Harvested		
	'000 acres	'000 acres	bu/ac	'000 tonnes	'000 acres	'000 acres	lbs/ac	'000 tonnes
Green Peas	385.0	375.0	35.9	366.0	n.a.	n.a.	n.a.	n.a.
Yellow Peas	1,750.0	1,735.0	41.3	1,951.4	1,812.0	1,782.0	34.7	1,674.0
Other Peas	45.0	40.0	26.4	28.7	n.a.	n.a.	n.a.	n.a.
Total Peas	2,180.0	2,150.0	40.1	2,346.1	2,260.0	2,222.0	34.4	2,069.2

Canadian Dry Peas Exports				
Top 20 Destinations by Crop Year				
		2014-15		
		tonnes		
			2015-16	tonnes
	World	3,082,027	World	2,646,492
1	India	1,269,402	India	1,230,521
2	China	795,751	China	768,467
3	Bangladesh	486,931	Bangladesh	273,573
4	United States	182,995	United States	98,405
5	Cuba	52,750	Cuba	65,110
6	United Arab Emirates	30,277	Colombia	24,690
7	Colombia	28,732	Philippines	24,493
8	Pakistan	25,663	Myanmar	19,828
9	Vietnam	25,402	United Arab Emirates	16,970
10	Philippines	20,218	Indonesia	12,860
11	Spain	16,196	Taiwan	12,178
12	Indonesia	13,596	Japan	10,613
13	Taiwan	11,911	Peru	10,087
14	Peru	9,039	Brazil	8,677
15	Japan	8,229	Yemen	5,870
16	Nepal	7,990	South Africa	4,211
17	Algeria	7,862	Trinidad & Tobago	4,059
18	Venezuela	7,517	Mexico	3,919
19	Yemen	6,295	Spain	3,873
20	Malaysia	5,104	Chile	3,696

Source: Statistics Canada

2016 Field Pea Acres by Crop District Field Pea Acres = 1,780,095 (insured by SCIC)



Growing Forward 2

SCIC
SASKATCHEWAN CROP
INSURANCE CORPORATION

Canada

Dry Pea Supply and Disposition, Western Canada											
	Aug 1	Harvested			Total	Use				July 31	Stocks/
	Stocks	Area	Production	Imports	Supply	Exports	Domestic	Seed	F.W.D.*	Stocks	Use
	'000 tonnes	'000 acres	'000 tonnes								
2007/08	167.0	3,565.0	2,934.8	37.6	3,139.4	2,201.6	23.0	271.1	388.7	255.0	9%
2008/09	255.0	3,895.0	3,564.5	15.1	3,834.6	2,825.6	23.0	255.8	285.2	445.0	13%
2009/10	445.0	3,675.0	3,379.4	55.0	3,879.4	2,177.8	25.0	246.6	520.0	910.0	31%
2010/11	910.0	3,432.0	3,018.2	32.9	3,961.1	3,012.2	25.0	166.0	222.9	535.0	16%
2011/12	535.0	2,407.0	2,502.0	11.8	3,048.8	2,095.7	27.7	253.8	406.6	265.0	10%
2012/13	265.0	3,645.0	3,340.8	16.1	3,621.9	2,649.6	27.7	226.2	544.4	174.0	5%
2013/14	174.0	3,285.0	3,960.8	25.1	4,159.9	2,780.5	30.0	269.8	750.6	329.0	9%
2014/15	329.0	3,923.0	3,810.1	30.8	4,169.9	3,082.0	25.0	251.3	127.6	684.0	20%
2015/16	684.0	3,632.0	3,200.7	15.9	3,900.6	2,646.5	30.0	290.2	757.7	176.2	5%
2016/17	176.2	4,166.0	4,835.9	25.0	5,037.1	3,250.0	40.0	280.0	725.0	742.1	17%

*Feed, waste, and dockage

Source: Statistics Canada and Saskatchewan Agriculture

Dry Pea

Chickpea

For 2016/17, chickpea production in Canada fell by 10 per cent because of lower seeded acres and inclement weather. Exports are expected to fall by 53 per cent because of late harvest conditions contributing to reduced quality from disease. It is anticipated that much of the chickpea harvest will still be sold as a result of the high value they currently derive from the feed market of about \$0.30 per pound. Australia's production was reduced due to excess moisture and inclement weather; however, Indian pulse production targets have been exceeded in their Khariff crop just recently harvested, and seeding intentions for pulse crops are reported to be meeting demand for the Rabi crop, which is now sown. Expected world demand for pulses still exceeds the pulse production targets. Expectations are that chickpea demand will remain strong for 2017, and seeded acreage will remain steady because of strong pricing despite problems with excess moisture in 2016.

	2007	2008	2009	2010	2011	2012	2013	2014	2015	2016
Chickpeas										
	Seeded Area (thousand acres)									
Saskatchewan	380.0	110.0	80.0	205.0	105.0	180.0	180.0	170.0	115.0	160.0
Manitoba										
Alberta	50.0	n.a.	25.0	n.a.	12.5	20.0	n.a.	n.a.	n.a.	n.a.
Prairie Provinces	430.0	110.0	105.0	205.0	117.5	200.0	180.0	170.0	115.0	160.0
	Production (thousand tonnes)									
Saskatchewan	198.1	67.0	57.4	128.3	75.2	145.2	169.4	123.0	83.5	75.2
Manitoba										
Alberta	26.7	n.a.	18.1	n.a.	10.4	16.2	n.a.	n.a.	n.a.	n.a.
Prairie Provinces	224.8	67.0	75.5	128.3	85.6	161.4	169.4	123.0	83.5	75.2
	Yields (pounds per acre)									
Saskatchewan	1,149	1,409	1,689	1,489	1,610	1,798	2,098	1,664	1,600	1,658
Manitoba										
Alberta	1,176	n.a.	1,600	n.a.	1,840	1,775	n.a.	n.a.	n.a.	n.a.
Prairie Provinces	1,152	1,409	1,667	1,489	1,635	1,795	2,097	1,664	1,600	1,658
	Average Price in Saskatchewan (\$/tonne)									
	07/08	08/09	09/10	10/11	11/12	12/13	13/14	14/15	15/16	16/17
\$/tonne	639	592	601	642	750	623	537	430	612	
	Canadian Exports (thousand tonnes)									
	07/08	08/09	09/10	10/11	11/12	12/13	13/14	14/15	15/16	16/17
'000 tonnes	68.5	53.0	65.6	85.8	36.6	68.5	46.4	76.5	149.5	

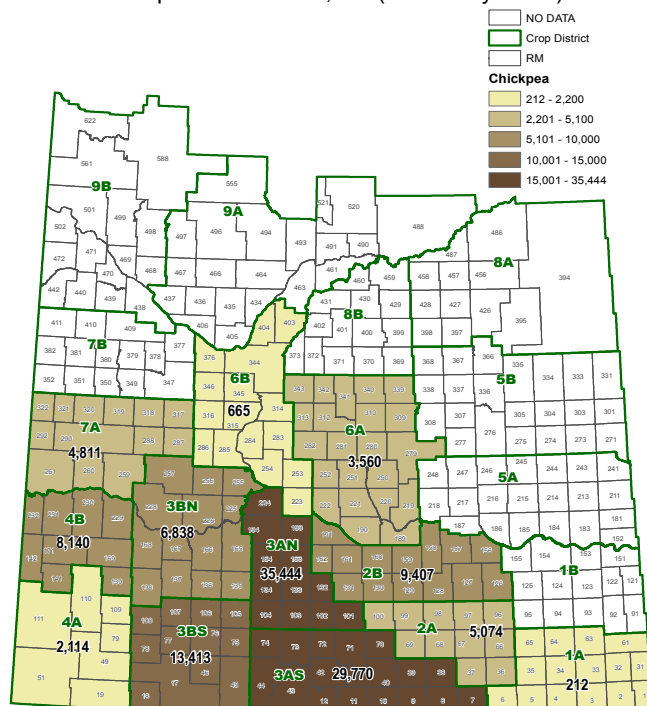
Source: Statistics Canada; Saskatchewan Agriculture

	Saskatchewan 2016				Saskatchewan (2011-15) average			
	Area		Yield	Production	Area		Yield	Production
Crop	Seeded	Harvested			Seeded	Harvested		
	'000 acres	'000 acres	lbs/ac	'000 tonnes	'000 acres	'000 acres	lbs/ac	'000 tonnes
Desi Chickpeas & Non-specified	18.0	10.0	1,675.5	7.6	37.0	36.6	1,812.3	30.6
Kabuli Chickpeas	142.0	90.0	1,656.0	67.6	113.0	110.8	1,729.4	88.6
Total Chickpeas	160.0	100.0	1,600.0	75.2	150.0	147.4	1,754.0	119.2

Canadian Chickpea Exports				
Top 20 Destinations by Crop Year				
	2014-15		2015-16	
		tonnes		tonnes
	World	76,482	World	149,530
1	United States	21,715	United States	45,814
2	Turkey	11,498	Pakistan	32,847
3	Pakistan	7,681	Turkey	15,802
4	United Kingdom	4,967	India	11,497
5	Israel	4,107	United Kingdom	6,297
6	India	3,858	Egypt	5,465
7	Jordan	3,809	United Arab Emirates	4,735
8	Italy	3,438	Italy	3,924
9	Lebanon	2,569	Israel	3,034
10	Egypt	2,095	Jordan	2,955
11	Trinidad & Tobago	1,124	Lebanon	2,349
12	Spain	1,045	Trinidad & Tobago	2,269
13	United Arab Emirates	935	Colombia	1,628
14	Colombia	915	Spain	1,314
15	Poland	676	Portugal	1,141
16	Belgium	590	Algeria	1,125
17	Sri Lanka	558	Netherlands	706
18	Tunisia	528	Peru	629
19	Netherlands	490	France	610
20	Chile	429	Saudi Arabia	587

Source: Statistics Canada

2016 Chickpea Acres by Crop District
Chickpea Acres = 119,448 (insured by SCIC)



Growing Forward 2

SCIC
SASKATCHEWAN CROP
INSURANCE CORPORATION

Canada

Chickpea Supply and Disposition, Western Canada											
	Aug 1	Harvested			Total	Use				July 31	Stocks/
	Stocks	Area	Production	Imports	Supply	Exports	Domestic	Seed	F.W.D.*	Stocks	Use
	'000 tonnes	'000 acres				'000 tonnes					
2007/08	10.0	430.0	224.8	8.4	243.2	68.5	16.0	7.0	59.7	92.0	61%
2008/09	92.0	105.0	67.0	4.1	163.1	53.0	19.1	6.7	22.3	62.0	61%
2009/10	62.0	100.0	75.5	5.9	143.4	65.6	20.5	13.0	24.3	20.0	16%
2010/11	20.0	190.0	128.3	9.3	157.6	85.8	30.0	6.7	13.1	22.0	16%
2011/12	22.0	115.5	85.6	8.7	116.3	36.6	30.0	12.7	26.0	11.0	10%
2012/13	11.0	198.0	161.4	8.9	181.3	68.5	24.8	11.4	22.6	54.0	42%
2013/14	54.0	178.0	169.4	8.5	231.9	46.4	31.0	11.0	31.5	112.0	93%
2014/15	112.0	163.0	123.0	10.0	245.0	76.5	33.0	7.0	34.9	93.6	62%
2015/16	93.6	115.0	83.5	18.0	195.1	149.5	25.0	6.5	10.0	4.3	2%
2016/17	4.3	100.0	75.2	20.0	99.5	70.0	10.0	7.3	10.0	2.2	2%
*Feed, waste, and dockage											

Source: Statistics Canada; Agriculture & AgriFood Canada and StatPublishing

Chickpea

Government
of
Saskatchewan

Mustard

Although 2016 had a good start to the growing season, mustard producers in Saskatchewan faced a challenging harvest, resulting in a prolonged or delayed harvest with some quality loss. Despite these challenges, Saskatchewan mustard acres were at their highest since 2009, and average yield and total production were greater in 2016 than any other year in the past decade.

Total mustard acreage in Saskatchewan was up 53 per cent from 2015, at 390,000 total seeded acres for 2016. Saskatchewan continued to be Canada's largest mustard-producing province, maintaining 74 per cent of all mustard acres in Canada.

Saskatchewan produced 162,300 tonnes of mustard in 2016, accounting for 69 per cent of the 233,900 total mustard produced in the Prairie provinces. Total mustard production in 2016 in Saskatchewan increased 77 per cent from 2015. Yields in 2016 were up 17 per cent from 2015, averaging 980 pounds per acre.

Exports in 2016-17 are expected to be higher than in 2015-16, with the United States, Belgium and Japan continuing to be the top export markets. Carry-out stocks are expected to be higher in 2016-17 than in 2015-16. The average price is expected to decrease.

Adapted from CANADA: OUTLOOK FOR PRINCIPAL FIELD CROPS and discussion with industry affiliates

	2007	2008	2009	2010	2011	2012	2013	2014	2015	2016
Mustard										
	Seeded Area (thousand acres)									
Saskatchewan	375.0	370.0	405.0	370.0	265.0	240.0	270.0	365.0	255.0	390.0
Manitoba										
Alberta	85.0	100.0	120.0	100.0	63.0	95.0	95.0	135.0	90.0	135.0
Prairie Provinces	460.0	470.0	525.0	470.0	328.0	335.0	365.0	500.0	345.0	525.0
	Production (thousand tonnes)									
Saskatchewan	95.3	123.9	160.6	134.3	103.2	82.7	117.3	138.6	91.5	162.3
Manitoba										
Alberta	29.5	37.2	47.7	47.7	26.8	35.9	37.2	59.4	31.9	71.6
Prairie Provinces	124.8	161.1	208.3	182.0	130.0	118.6	154.5	198.0	123.4	233.9
	Yields (pounds per acre)									
Saskatchewan	560	770	885	846	892	760	965	873	841	980
Manitoba										
Alberta	765	820	915	1,052	949	850	892	985	800	1,196
Prairie Provinces	598	781	892	892	903	785	947	904	830	1,037
	Average Price in Saskatchewan (\$/tonne)									
	07/08	08/09	09/10	10/11	11/12	12/13	13/14	14/15	15/16	16/17
\$/tonne	689	930	660	537	654	665	775	696	939	
	Canadian Exports (thousand tonnes)									
	07/08	08/09	09/10	10/11	11/12	12/13	13/14	14/15	15/16	16/17
'000 tonnes	168.2	130.8	128.0	123.5	115.2	119.8	137.9	126.0	112.9	

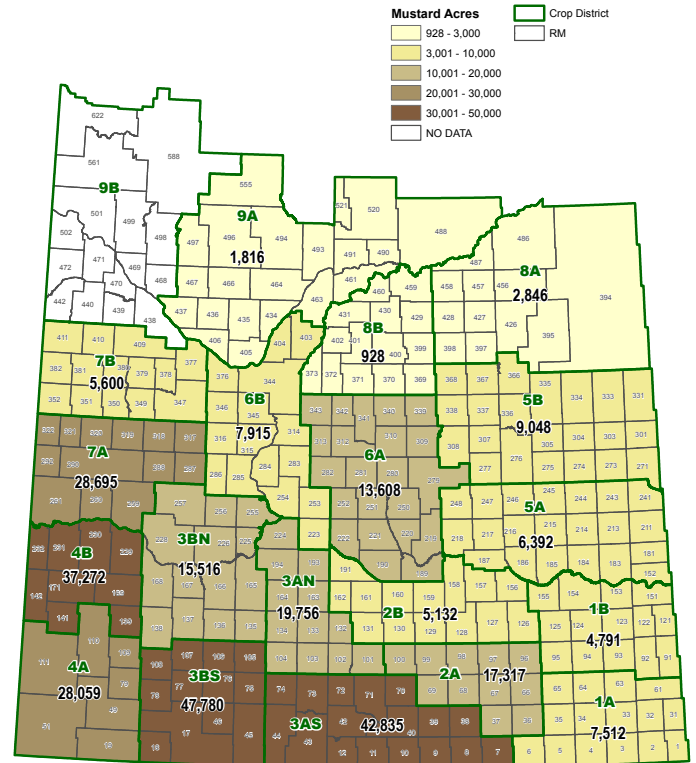
Source: Statistics Canada; Saskatchewan Agriculture

Crop	Saskatchewan 2016				Saskatchewan (2011-15) average			
	Area		Yield	Production	Area		Yield	Production
	Seeded	Harvested		'000	Seeded	Harvested		'000
	'000 acres	'000 acres	lbs/ac	tonnes	'000 acres	'000 acres	lbs/ac	tonnes
Brown Mustard	50.0	45.0	1,133.0	23.1	83.0	81.0	999.3	36.9
Yellow Mustard	240.0	225.0	869.0	88.7	140.0	135.0	748.2	45.4
Oriental & Non-specified Mustard	100.0	95.0	1,172.0	50.5	56.0	54.6	980.4	24.3
Total Mustard	390.0	365.0	980.0	162.3	279.0	270.6	866.1	106.6

Canadian Mustard Exports				
Top 20 Destinations by Crop Year				
	2014-15		2015-16	
		tonnes		tonnes
	World	125,986	World	112,891
1	United States	68,342	United States	68,467
2	Belgium	22,086	Belgium	16,478
3	Japan	5,644	Japan	5,065
4	France	4,345	France	3,810
5	Senegal	3,830	Senegal	2,921
6	Netherlands	3,618	Netherlands	2,401
7	Germany	2,539	Korea, South	2,165
8	Thailand	1,737	Thailand	1,858
9	Korea, South	1,554	Bolivia	962
10	Brazil	1,496	Germany	952
11	Switzerland	1,291	Australia	809
12	Australia	1,111	Brazil	744
13	Italy	783	Swaziland	653
14	Ecuador	722	Peru	648
15	Peru	674	Morocco	600
16	Venezuela	636	Ecuador	597
17	United Kingdom	623	Switzerland	584
18	Swaziland	596	Greece	475
19	Morocco	504	Guatemala	475
20	Greece	494	Poland	290

Source: Statistics Canada

2016 Mustard Acres by Crop District Mustard Acres = 302,818 (insured by SCIC)



Growing Forward 2

SCIC
SASKATCHEWAN CROP
INSURANCE CORPORATION

Canada

Mustard Supply and Disposition, Western Canada											
	Aug 1	Harvested			Total	Use				July 31	Stocks/
	Stocks	Area	Production	Imports	Supply	Exports	Domestic	Seed	F.W.D.*	Stocks	Use
	'000 tonnes	'000 acres				'000 tonnes					
2007/08	91.0	460.0	124.8	0.4	216.2	168.2	10.0	2.1	8.9	27.0	14%
2008/09	27.0	455.0	161.1	0.9	189.0	130.8	8.0	2.4	5.8	42.0	29%
2009/10	42.0	515.0	208.3	0.3	250.6	128.0	13.7	2.1	24.8	82.0	49%
2010/11	82.0	450.0	182.0	0.5	264.5	123.5	10.0	1.5	13.5	116.0	78%
2011/12	116.0	317.5	130.0	0.5	246.5	115.2	24.1	1.5	22.7	83.0	51%
2012/13	83.0	333.0	118.6	1.3	202.9	119.8	24.0	1.7	21.4	36.0	22%
2013/14	36.0	360.0	154.5	1.8	192.3	137.9	20.0	2.0	23.9	8.5	5%
2014/15	8.5	483.0	198.0	1.0	207.5	126.0	25.0	1.7	19.4	35.4	21%
2015/16	35.4	328.0	123.4	2.0	160.8	112.9	27.5	2.5	12.1	5.8	4%
2016/17	5.8	497.0	233.9	1.5	241.2	140.0	30.0	2.4	21.0	47.8	25%
*Feed, waste, and dockage											

Source: Statistics Canada; Agriculture & AgriFood Canada and StatPublishing

Mustard

Canaryseed

The 2016 growing season started off with warm temperatures and sufficient precipitation in most areas. By mid- to late-July, many areas had begun to experience excess moisture, which continued into the fall. Canaryseed was lodged in some areas, with further lodging pressure caused by snow in early October. Very little was harvested in October, and it is estimated that 18 per cent of the crop remains in the field.

Yields were excellent, approaching 2013 levels. Conventional canaryseed made up about two-thirds of harvested acres and yielded 22 per cent more than the hairless canaryseed. Provincially, canaryseed production averaged 1,321 pounds per acre, 27 per cent above last year. The hairless type, when dehulled, is now approved for human consumption in Canada and the United States.

Seeded area was 20 per cent less in 2016 than in 2015, at 260,000 acres; overall production is estimated to be 119,800 tonnes. Statistics Canada did not report any canaryseed production outside of Saskatchewan in 2016.

Exports in 2016-17 are expected to be slightly lower than 2015-16. Mexico and the European Union remain the top export markets for canaryseed, with strong markets in the United States and South American countries.

Carry-out stocks have been low for several years, which is normally an indicator that prices may increase. Prices have remained steady, perhaps because canaryseed stocks and prices are notoriously difficult to predict.

	2007	2008	2009	2010	2011	2012	2013	2014	2015	2016
Canaryseed										
Seeded Area (thousand acres)										
Saskatchewan	425.0	390.0	355.0	365.0	275.0	335.0	210.0	275.0	325.0	260.0
Manitoba	15.0	20.0	15.0	30.0	n.a.	n.a.	n.a.	n.a.	n.a.	n.a.
Alberta										
Prairie Provinces	440.0	410.0	370.0	395.0	275.0	335.0	210.0	275.0	325.0	260.0
Production (thousand tonnes)										
Saskatchewan	155.7	184.6	188.7	143.2	128.6	149.7	131.0	124.9	148.6	119.8
Manitoba	6.8	10.4	8.7	10.3	n.a.	n.a.	n.a.	n.a.	n.a.	n.a.
Alberta										
Prairie Provinces	162.5	195.0	197.4	153.5	128.6	149.7	131.0	124.9	148.6	119.8
Yields (pounds per acre)										
Saskatchewan	827	1,071	1,224	890	1,050	1,015	1,375	1,039	1,040	1,321
Manitoba	1,000	1,150	1,267	910						
Alberta										
Prairie Provinces	n.a.	n.a.	n.a.	891	1,050	1,015	1,375	1,039	1,040	1,321
Average Price in Saskatchewan (\$/tonne)										
	07/08	08/09	09/10	10/11	11/12	12/13	13/14	14/15	15/16	16/17
\$/tonne	525	498	402	546	592	584	519	528	560	
Canadian Exports (thousand tonnes)										
	07/08	08/09	09/10	10/11	11/12	12/13	13/14	14/15	15/16	16/17
'000 tonnes	204.2	152.6	181.3	178.9	126.4	136.2	163.8	164.4	146.2	
Source: Statistics Canada; Saskatchewan Agriculture										

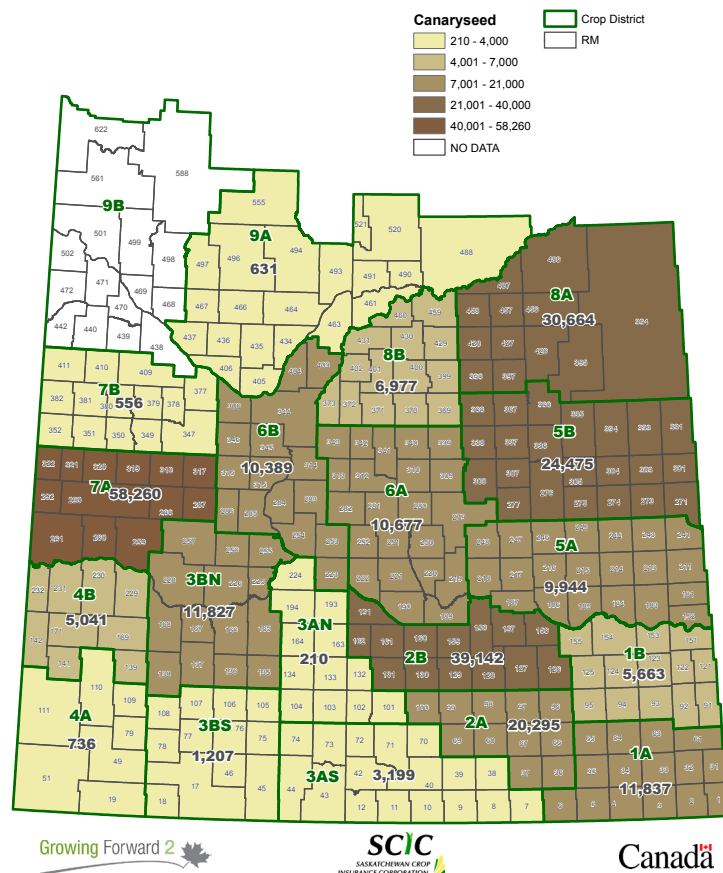
Crop	Saskatchewan 2016				Saskatchewan (2011-15) average			
	Area		Yield	Production	Area		Yield	Production
	Seeded	Harvested		'000	Seeded	Harvested		'000
	'000 acres	'000 acres	lbs/ac	tonnes	'000 acres	'000 acres	lbs/ac	tonnes
Hairless Canary Seed	85.0	65.0	1,148.0	33.8	102.0	100.6	1,034.6	46.5
Regular Canary Seed	175.0	135.0	1,404.0	86.0	182.0	176.4	1,141.7	90.0
Total Canaryseed	260.0	200.0	1,321.0	119.8	284.0	277.0	1,103.8	136.5

Canadian Canaryseed Exports				
Top 20 Destinations by Crop Year				
2014-15		2015-16		
	tonnes		tonnes	
	World	164,408	World	146,150
1	Mexico	39,900	Mexico	34,941
2	Belgium	22,951	Belgium	22,615
3	Indonesia	14,552	Indonesia	13,814
4	Spain	11,686	Spain	11,526
5	Colombia	11,292	Colombia	8,806
6	Brazil	8,923	United States	7,691
7	United States	8,771	Italy	5,817
8	Italy	5,636	Turkey	4,550
9	Turkey	4,198	Portugal	4,244
10	Portugal	3,892	Algeria	2,753
11	Peru	3,378	Chile	2,418
12	Chile	3,046	Tunisia	2,391
13	Venezuela	2,719	Brazil	2,364
14	Tunisia	2,185	Peru	2,355
15	United Arab Emirates	2,074	Egypt	2,168
16	Egypt	1,973	Germany	1,318
17	Algeria	1,683	Morocco	1,222
18	Ecuador	1,369	Malta	1,066
19	Germany	1,332	Ecuador	1,033
20	Guatemala	1,150	Japan	948

Source: Statistics Canada

2016 Canaryseed Acres by Crop District

Canaryseed Acres = 251,730 (insured by SCIC)



Canaryseed Supply and Disposition, Western Canada											
	Aug 1	Harvested			Total	Use				July 31	Stocks/
	Stocks	Area	Production**	Imports	Supply	Exports	Domestic	Seed	F.W.D.*	Stocks	Use
	'000 tonnes	'000 acres				'000 tonnes					
2007/08	120.0	430.0	162.5	-	282.5	204.2	3.0	7.2	3.1	65.0	30%
2008/09	65.0	400.0	195.0	-	260.0	152.6	5.0	6.5	18.9	77.0	42%
2009/10	77.0	355.0	197.4	-	274.4	181.3	5.0	6.9	12.2	69.0	34%
2010/11	69.0	380.0	153.5	-	222.5	178.9	4.0	4.8	4.8	30.0	16%
2011/12	30.0	270.0	128.6	-	158.6	126.4	4.0	5.9	5.3	17.0	12%
2012/13	17.0	325.0	149.7	0.1	166.8	136.2	1.5	3.7	3.4	22.0	15%
2013/14	22.0	210.0	131.0	0.1	153.1	163.8	1.5	3.7	-	-	0%
2014/15**	-	265.0	124.9	-	124.9	164.4	1.5	4.4	-	-	0%
2015/16	-	315.0	148.6	-	148.6	142.0	1.5	2.8	-	2.3	2%
2016/17	2.3	200.0	119.8	-	122.1	116.0	1.5	4.1	-	0.5	0%

*Feed, waste, and dockage

** Statistics Canada is not getting good enough information from the Field Crop surveys to be able to complete the S&D table

Source: Statistics Canada; Agriculture & AgriFood Canada and StatPublishing

Canaryseed





Government
— of —
Saskatchewan
