

# 2023 Grasshopper Forecast

based on adult grasshopper counts

Infestation

Risk - Cereals

> 24 per m<sup>2</sup> Extreme

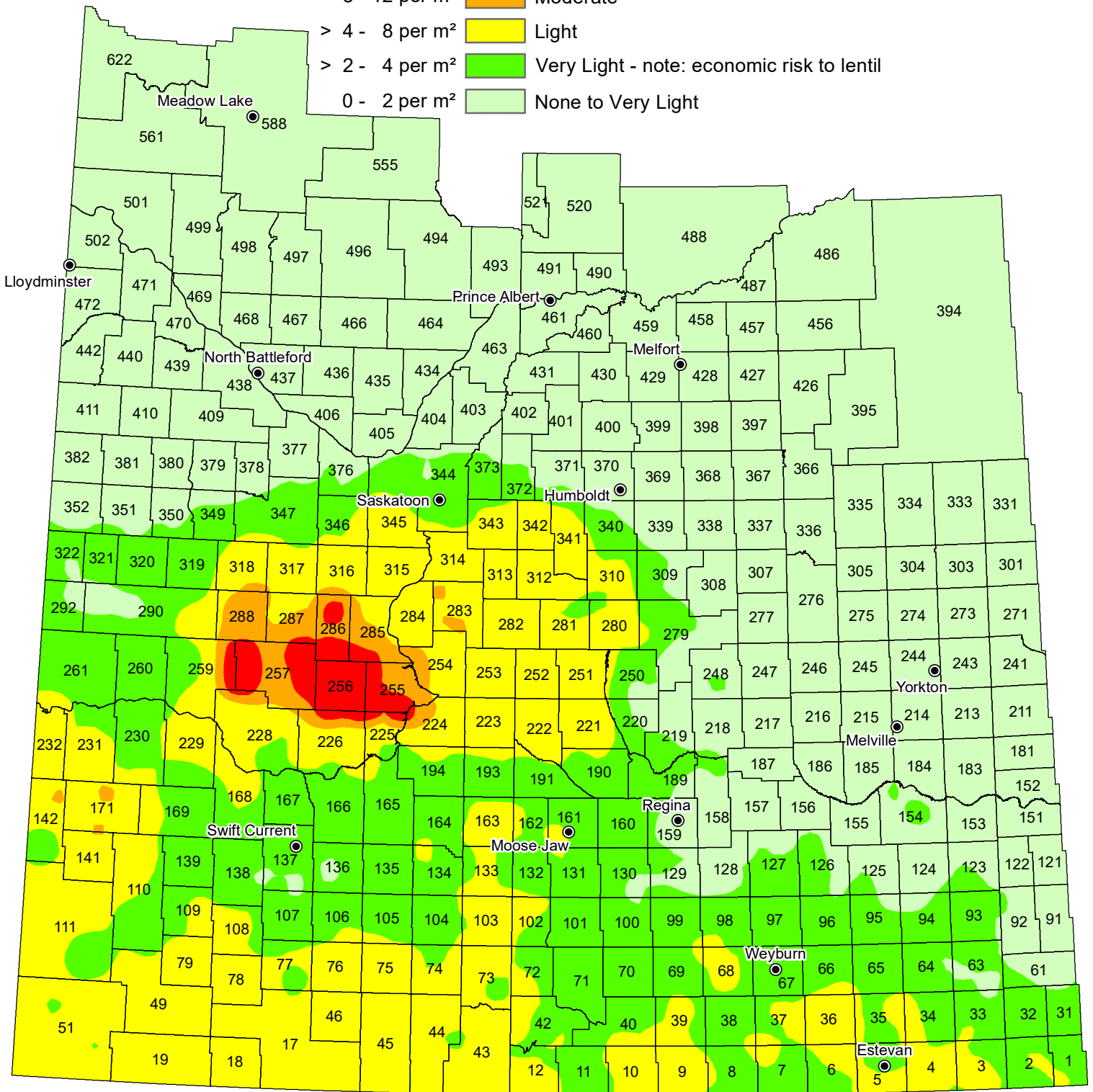
> 12 - 24 per m<sup>2</sup> Severe

> 8 - 12 per m<sup>2</sup> Moderate

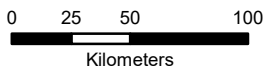
> 4 - 8 per m<sup>2</sup> Light

> 2 - 4 per m<sup>2</sup> Very Light - note: economic risk to lentil

0 - 2 per m<sup>2</sup> None to Very Light



NOTE: Since techniques used to smooth the transition between zones can affect the values in localized areas, this map should be used for regional analysis only.



Projection: UTM Zone 13 Datum: NAD83

Data Source:  
Grasshopper Count - Saskatchewan Crop Insurance Corporation  
Field Staff

Geomatic Services, Ministry of Agriculture November 10, 2022