

Legend:

- | | |
|---|--|
| <p>C QUATERNARY DEPOSITION surface topographic form
DRAINAGE BASIN AND WATER DIVISION</p> <p>D MIOCENE DEPOSITION surface topographic form
DRAINAGE BASIN AND WATER DIVISION</p> <p>W ALLUVIAL FLOOD PLAINS surface topographic form
DRAINAGE BASIN AND WATER DIVISION</p> <p>TL TERTIARY DEPOSITION surface topographic form
DRAINAGE BASIN AND WATER DIVISION</p> <p>LL QUATERNARY DEPOSITION surface topographic form
DRAINAGE BASIN AND WATER DIVISION</p> <p>OF QUATERNARY DEPOSITION surface topographic form
DRAINAGE BASIN AND WATER DIVISION</p> <p>LZ QUATERNARY DEPOSITION surface topographic form
DRAINAGE BASIN AND WATER DIVISION</p> <p>MF QUATERNARY DEPOSITION surface topographic form
DRAINAGE BASIN AND WATER DIVISION</p> <p>WR QUATERNARY DEPOSITION surface topographic form
DRAINAGE BASIN AND WATER DIVISION</p> <p>NO DATA</p> | <p>Boundary of the Athabasca Group, approximate</p> <p>Projected boundary, approximate</p> <p>Boundary of section through the Athabasca Basin</p> <p>Section of section used to construct section</p> <p>Average section plane (see history within the Athabasca Basin Group, description of section, in illustration)</p> |
|---|--|

Stratigraphy and Maximum Grain Size Distribution, Athabasca Basin
A. Geological Map of the Athabasca Basin
B. Maximum Grain Size in the Sandy Formations of the Athabasca Group.

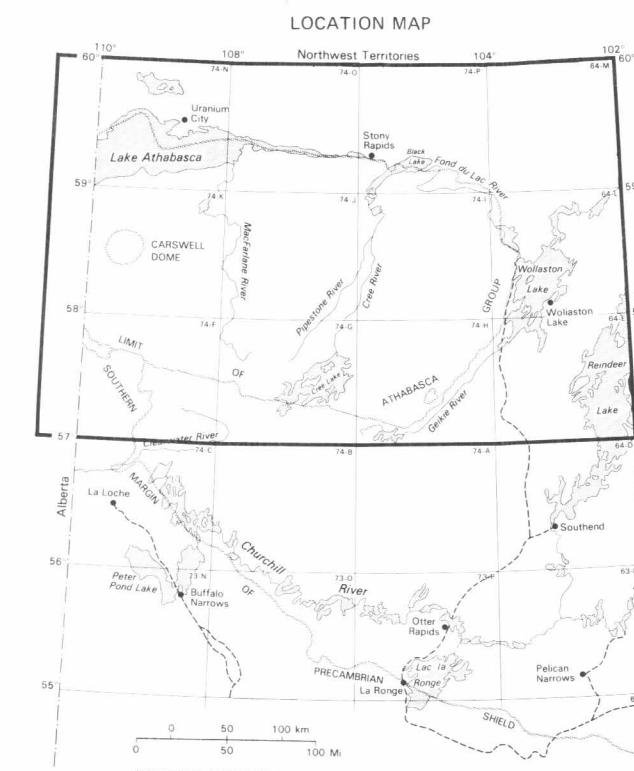
Preliminary Geological Map

by: P. RAMAEKERS

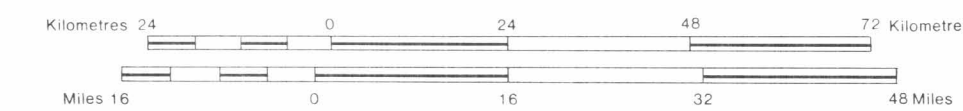
Geologically mapped by Paul Ramaekers and assistants, 1975 to 1980.

The geological reconnaissance of the interior of the Athabasca Basin, carried out in the summers of 1978 and 1979, was funded under the Canada-Saskatchewan Interim Agreement for Mineral Exploration, Reconnaissance, and Geoscience Surveys.

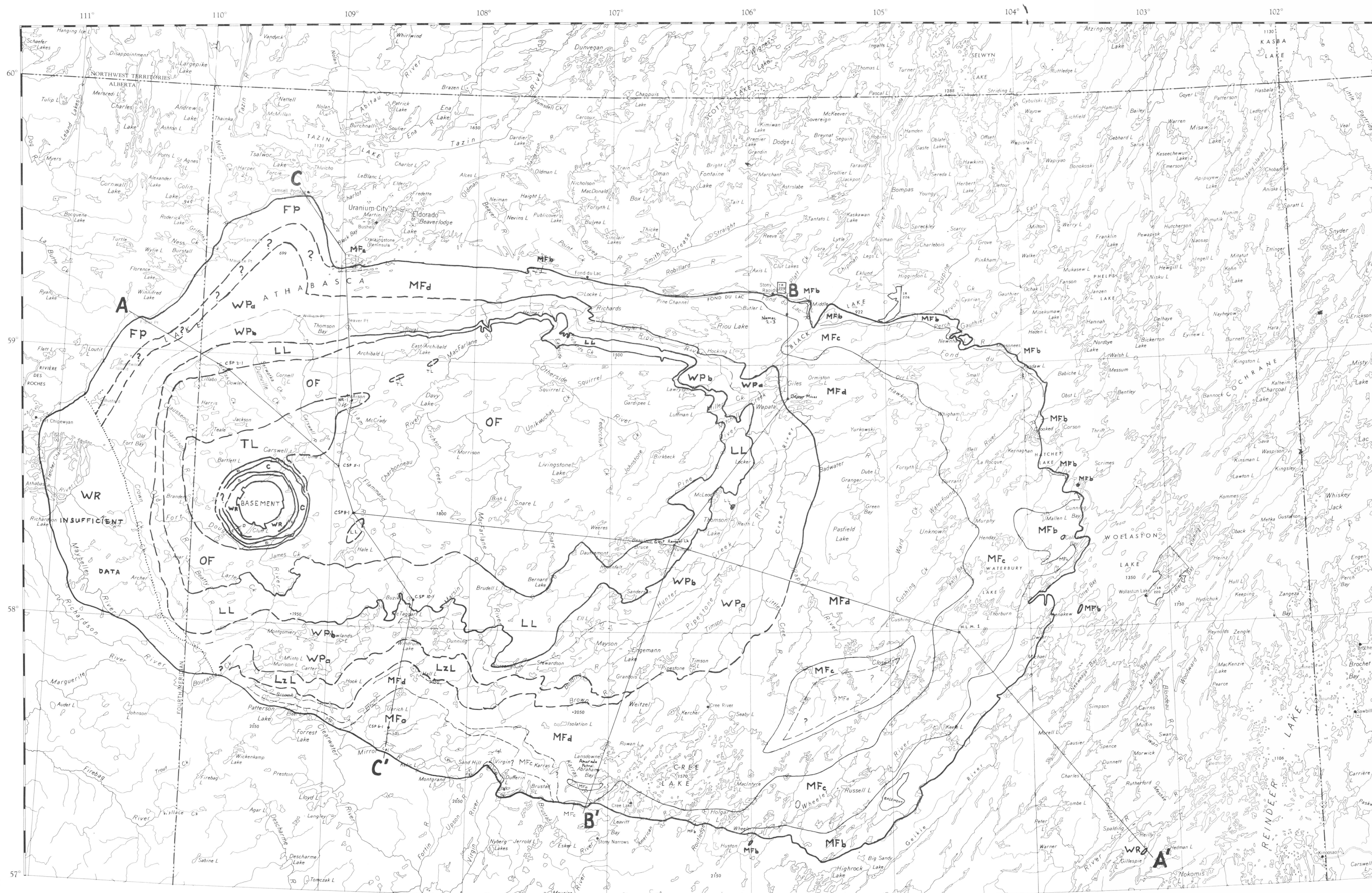
This map is a provisional summary and is printed directly from the geologist's manuscript. It is issued with the "Summary of Investigations 1980, Saskatchewan Geological Survey" or separately, and is expected to be superseded by the maps accompanying Department of Mineral Resources Report No. 195.



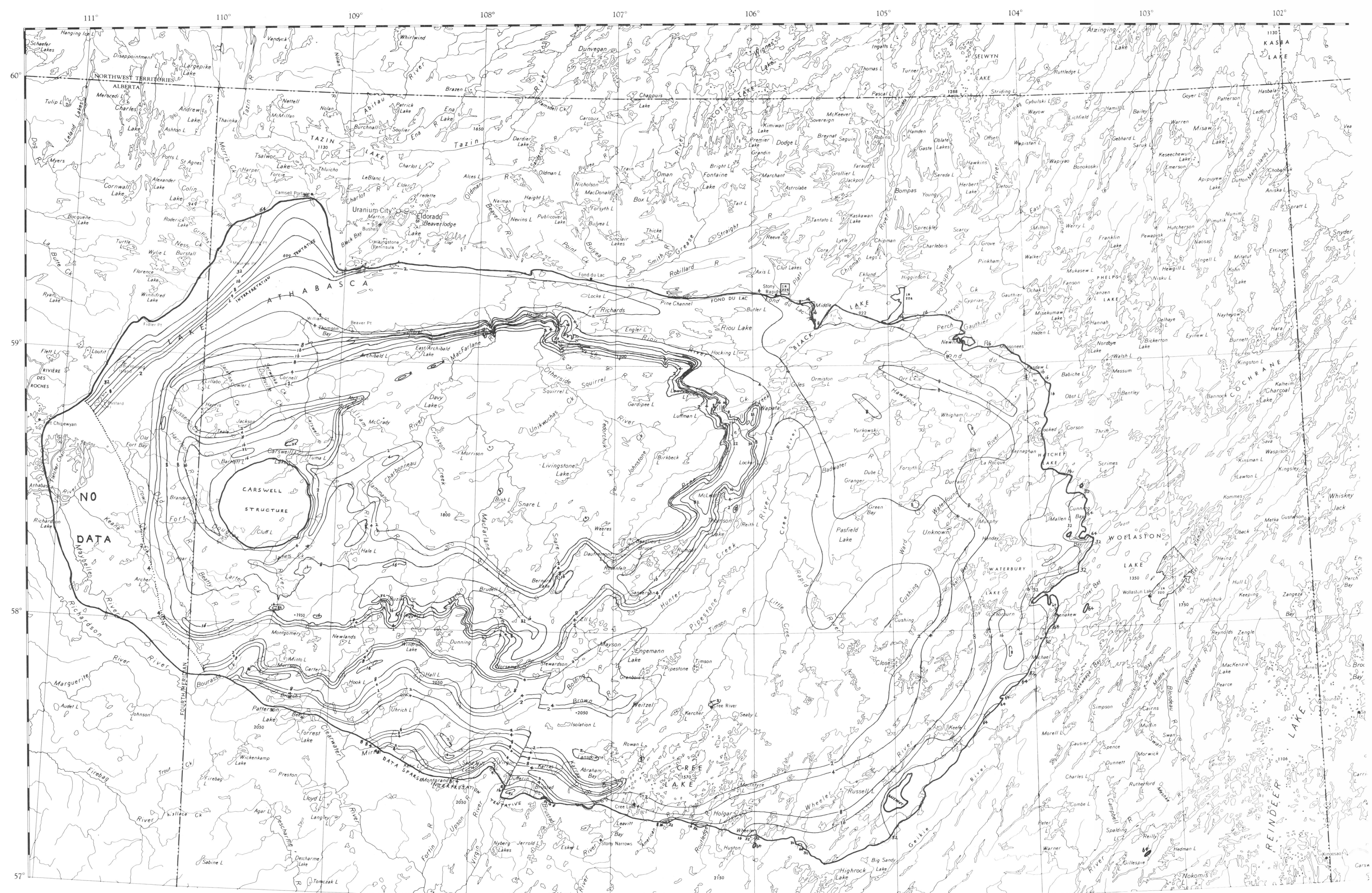
Scale 1:1,000,000



Reference: Summary of Investigations 1980, Saskatchewan Geological Survey, Saskatchewan Dept. Mineral Resources, pp. 99-106.



A. Geological Map of the Athabasca Basin



B. Maximum Grain Size in the Sandy Formations of the Athabasca Group.