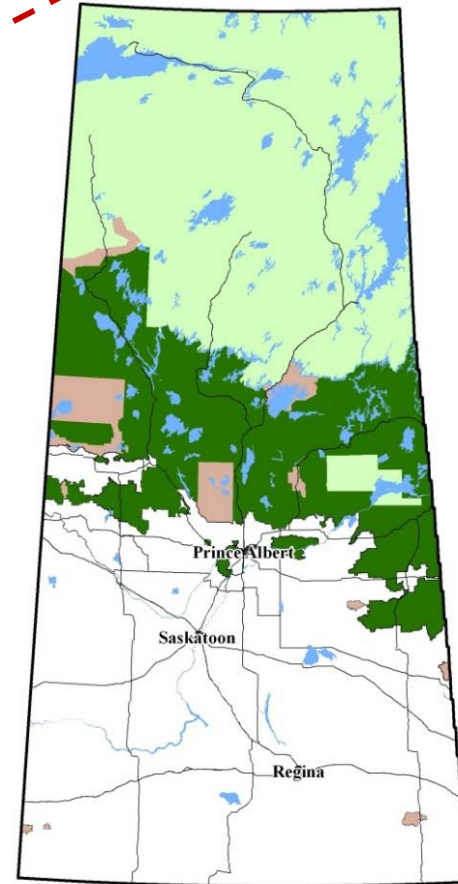
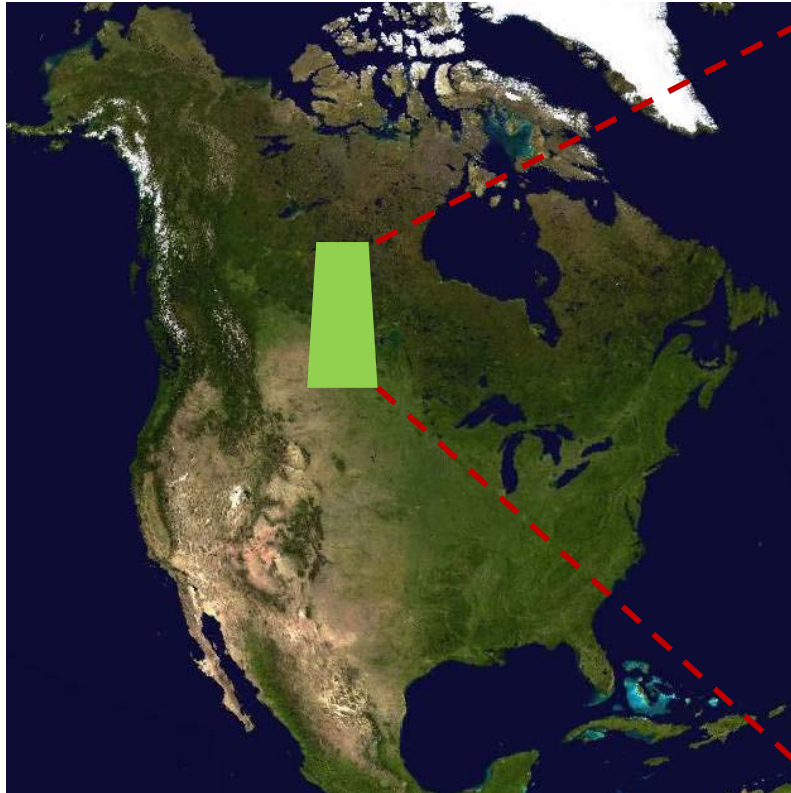


SASKATCHEWAN FORESTRY SECTOR



March 2019

Commercial Forest Zone



**OVER HALF OF
SK IS FORESTED !
(34.3 million ha)**

**COMMERCIAL
FOREST ZONE
(11.7 million ha)**



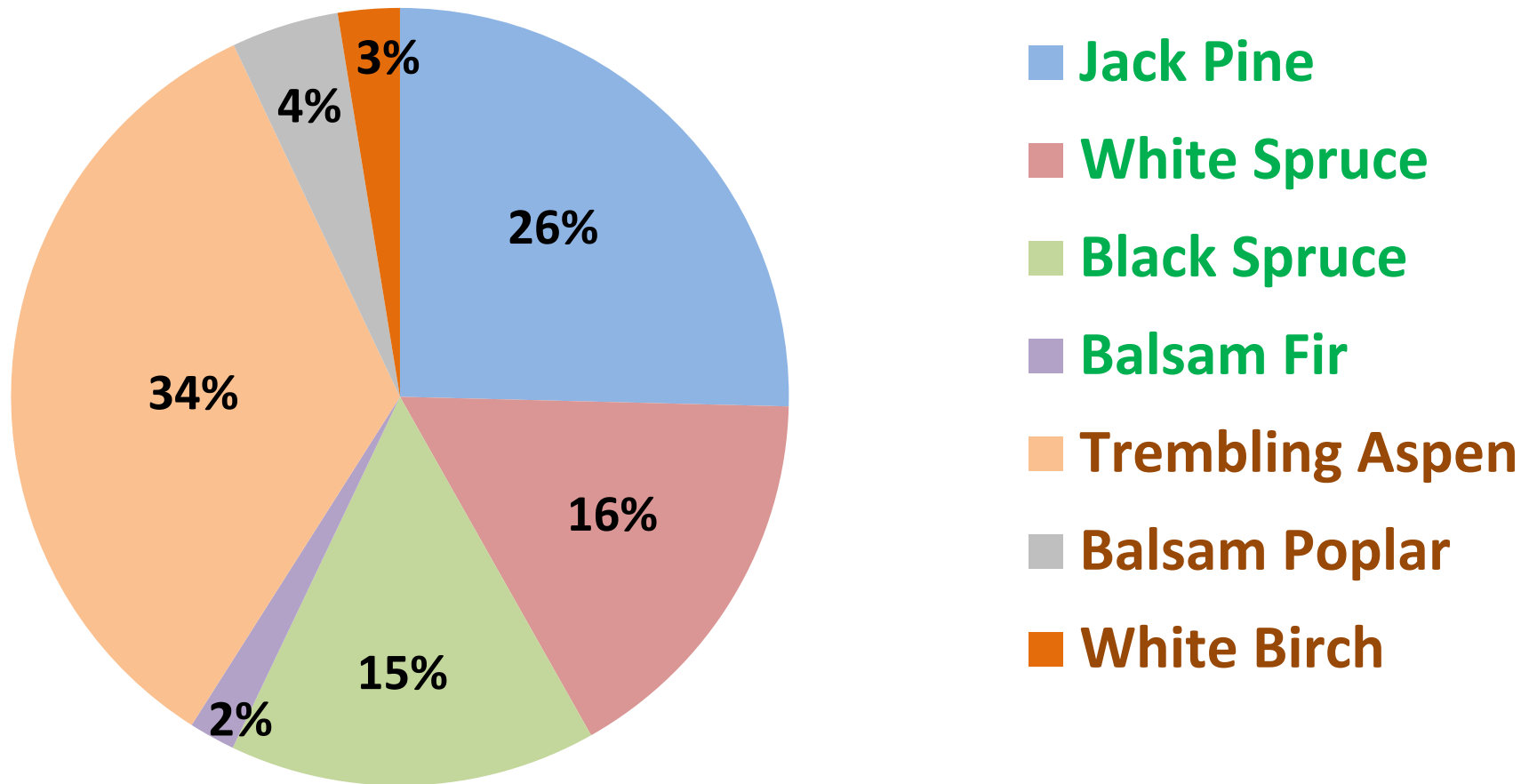
Timber Resource

- Commercial Forest Zone is 11.7 million hectares, 5.3 million of which is productive forest land available for commercial timber harvesting
- Sustainable timber harvest (Annual Allowable Cut) is 8.4 million m³ of timber annually
 - 4.8M softwood trees & 3.6M hardwood trees



Commercial Tree Species

(59% Softwood, 41% Hardwood)



Note: Based on Percent of Annual Allowable Cut

Forest Industry Overview

- Northern Saskatchewan's second largest industry (after mining)
- 8 large primary forest products manufacturing facilities
 - 2 pulp mills, 2 OSB mills, 4 saw mills
- 7 of 8 large mills operating in 2018, with forest products sales over \$1.2 billion, & supported nearly 8,000 jobs (direct & indirect)
- Full sector development utilizing majority of AAC has potential to generate over \$2 billion in forest products sales annually & support nearly 12,000 jobs (direct & indirect)
- Over 75% of primary forest products are exported to other countries, mostly United States (lumber & panels), China & Indonesia (pulp)
- 210 + smaller businesses producing a variety of primary & secondary forest products
- 230 + supply chain businesses involved in road construction, timber harvesting, trucking and reforestation
- Over \$500 million of investments planned during next 4 years
- First Nations & Métis people comprise over 30% of the workforce, by far the largest of any province
- SK represents ~ 10% of Canada's total Indigenous forestry employment

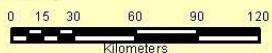


Saskatchewan Large Forest Products Mills

Mill Type*



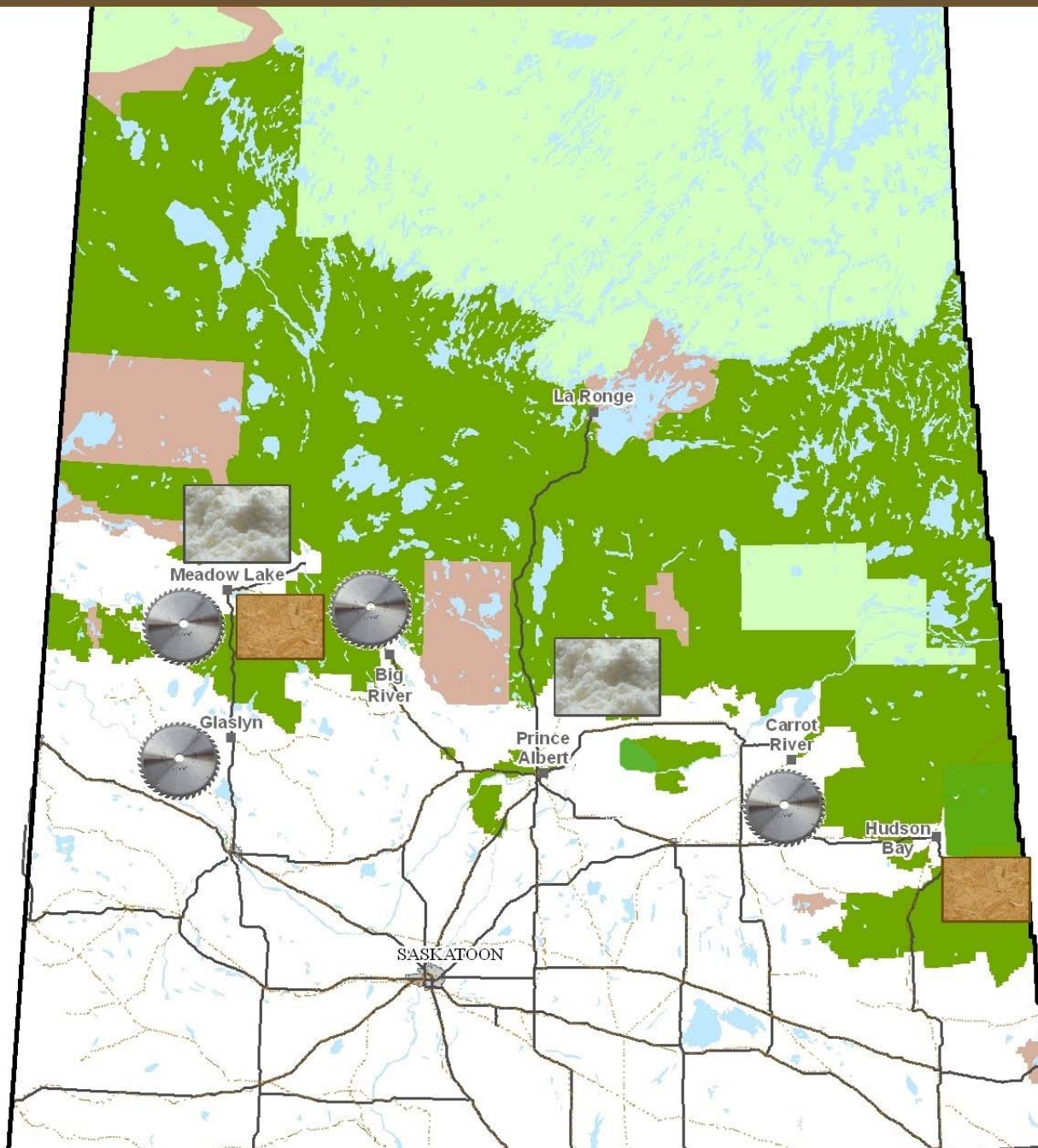
* Mills utilizing greater than 100,000m³ annually



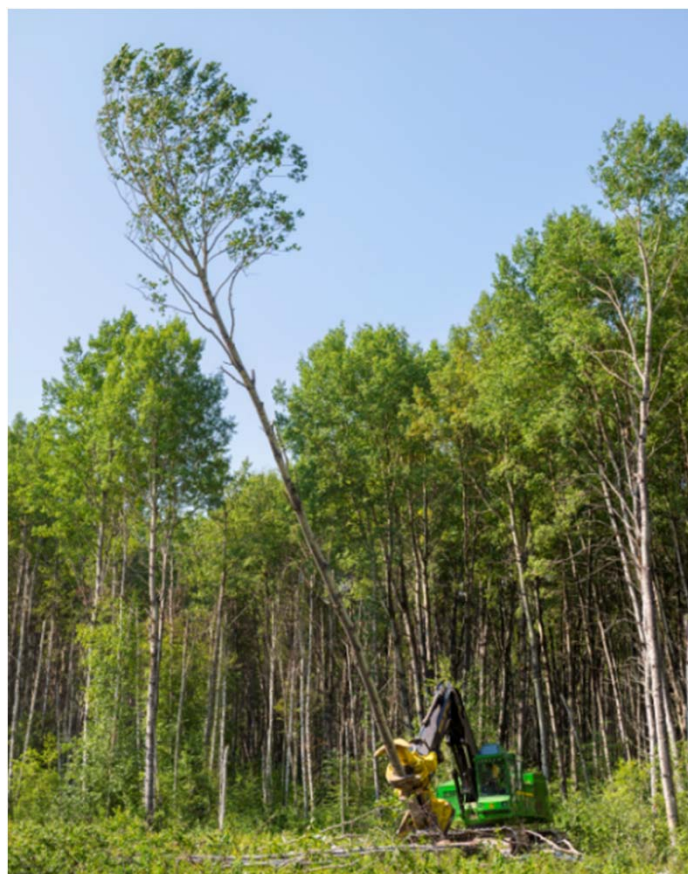
Key Map



- Non-Commercial Forest Zone
- Commercial Forest Zone
- Agricultural Zone
- Parks and AWR



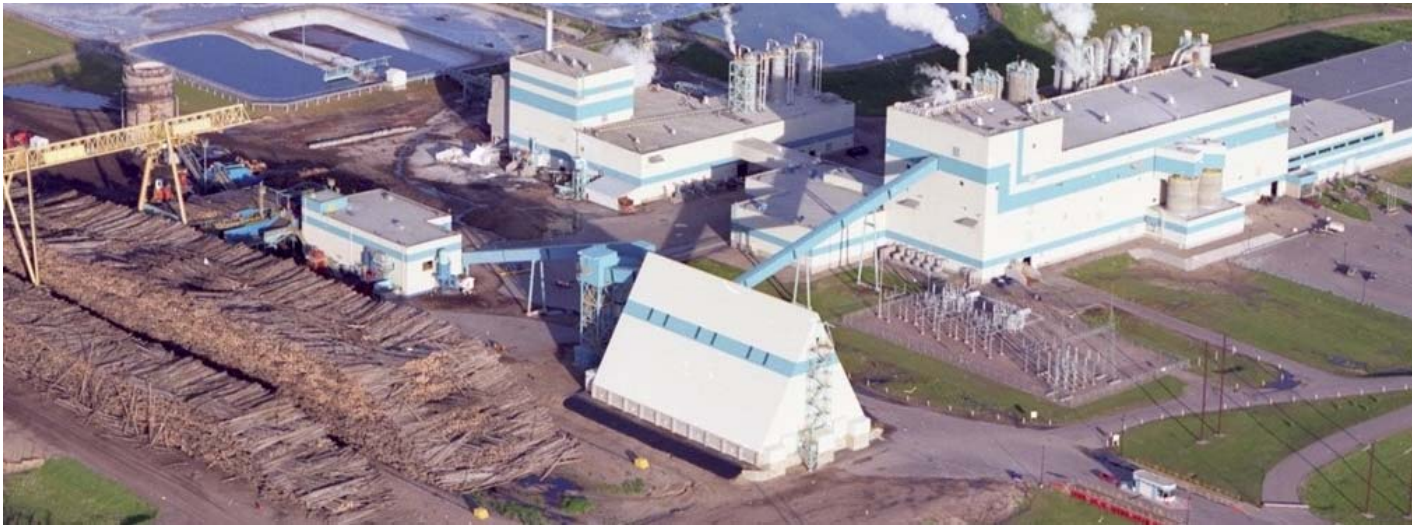
Woodlands (Supply Chain)



Woodlands (Supply Chain)



Primary Mills



PULP



ORIENTED STRAND BOARD



LUMBER

Primary Forest Products



Pulp



Lumber



OSB

Secondary Forest Products



Cabinetry & Paneling



Treated Posts & Lumber



Trusses



Log Homes

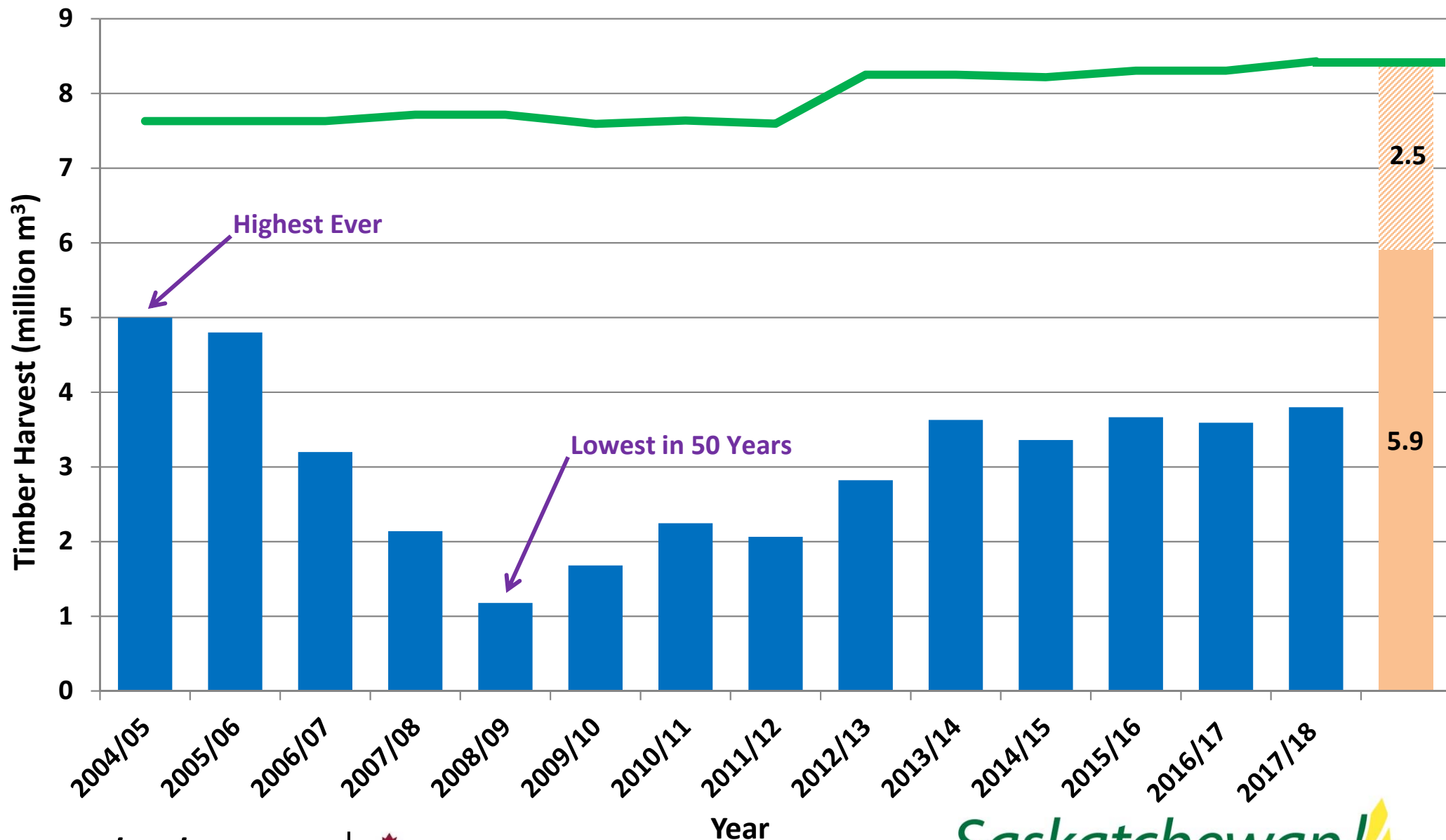
Commercial Forest Zone - AAC and Timber Harvest

Actual Harvest

8 Existing Mills Operating at Capacity

AAC Available for New Mills

Annual Allowable Cut (AAC)



saskatchewan.ca | 

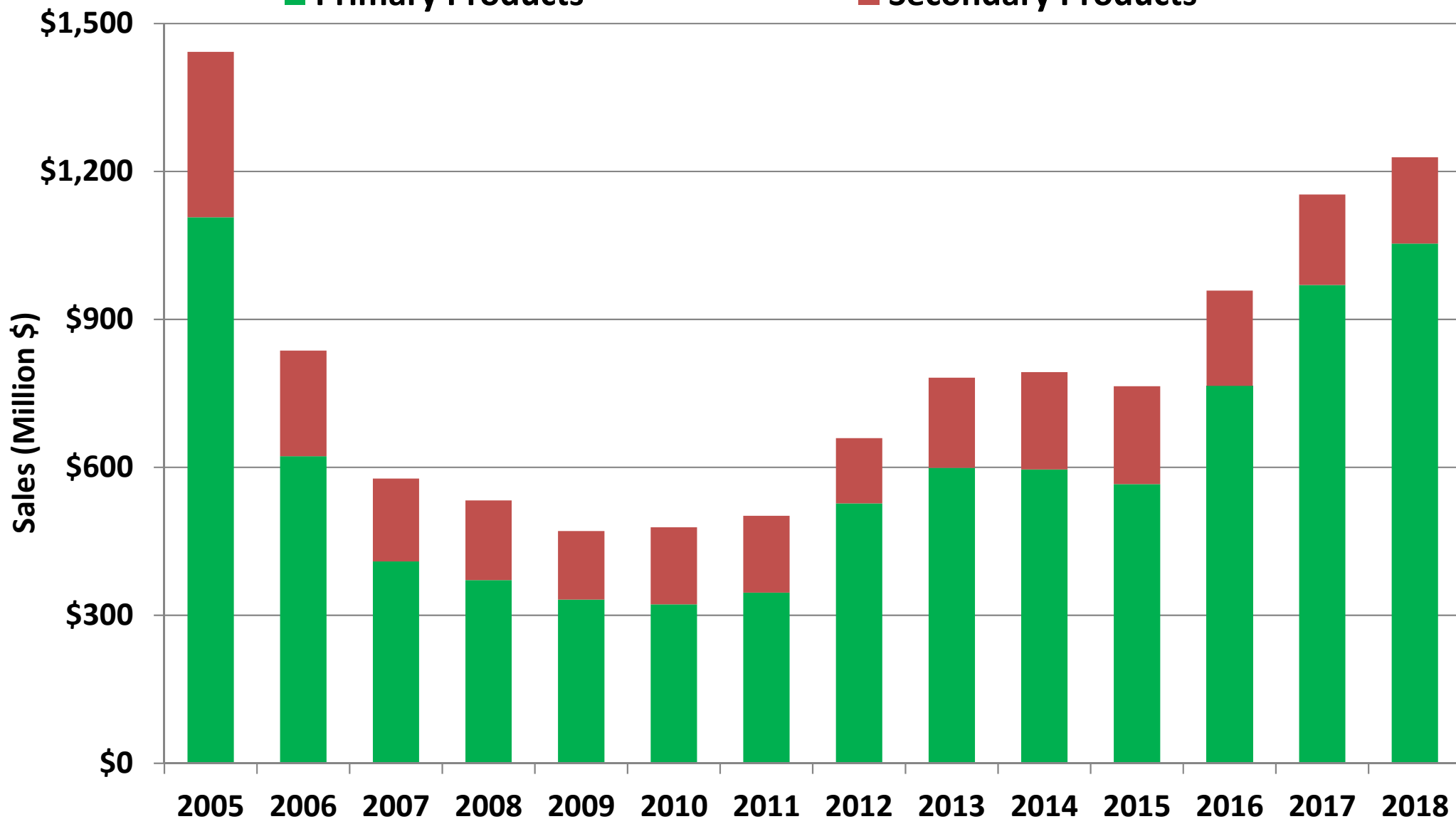
Saskatchewan 

*Does not include AAC or timber harvest from other Crown lands or private lands.

Forest Products Sales

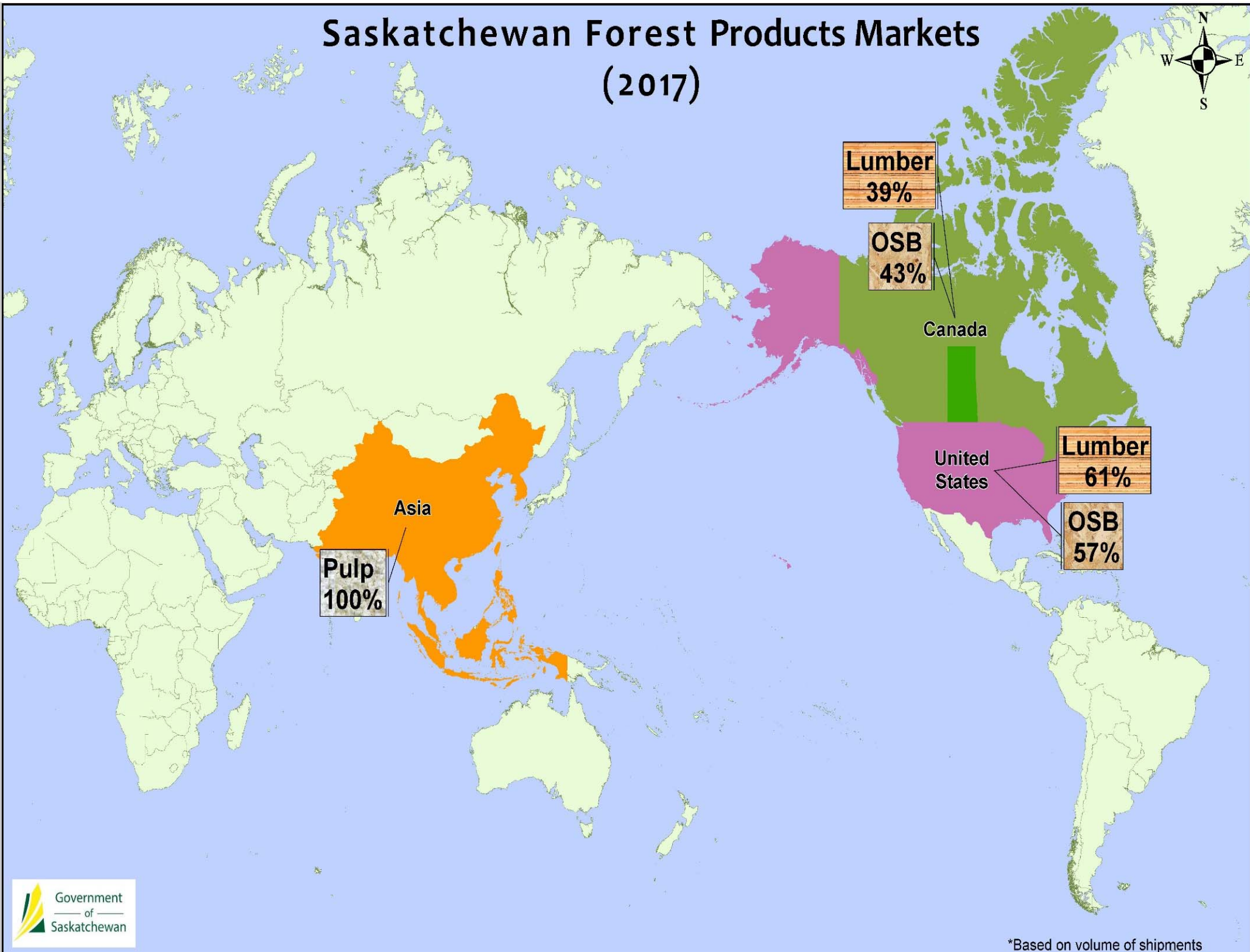
■ Primary Products

■ Secondary Products



Source: Statistics Canada

Saskatchewan Forest Products Markets (2017)



Opportunities

- **Stable annual allowable cut (AAC)**
- **Primary forest products mills to utilize surplus AAC (2.5 million m³)**
- **Secondary forest products mills**
- **Biomass utilization from mill wood waste & logging waste (1.0 million oven dry tonnes)**
 - e.g. renewable power generation plants, wood pellets
- **Biochemicals & biofuels**
- **Supply chain businesses**
 - e.g. logging and trucking
- **Competitive corporate taxes**
- **Competitive timber royalty rates**

For more information contact:

**Forestry Development Branch
Saskatchewan Ministry of Energy and Resources
(306) 953-3785**

forestrydevelopmentbranch@gov.sk.ca

or visit

<https://www.thinksask.ca/invest>