

# **La Ronge Integrated Land Use Management Plan**

## **APPENDICES**

**APPENDICIES  
TABLE OF CONTENTS**

	<b>PAGE#</b>
<b>Appendix 1</b> Ecoregions Within the Planning Area.....	A1
<b>Appendix 2</b> List of Common and Scientific Names Birds, Fish, Mammals, and Vegetation.....	A3
<b>Appendix 3</b> The Mineral Industry of Saskatchewan.....	A9
<b>Appendix 4</b> Zoning Framework.....	A15
<b>Appendix 5</b> Land Use Management Zones - A Description.....	A19
<b>Appendix 6</b> Provincial and Federal Departments and Agencies Responsible for Land and Resource Management.....	A31
<b>Appendix 7</b> Provincial and Federal Government Legislation Applicable to Land and Resource Management.....	A35
<b>Appendix 8</b> Provincial and Federal Government Policies and Guidelines Applicable to Land and Resource Management.....	A37
<b>Appendix 9</b> General Land Use Planning Process.....	A41
<b>Appendix 10</b> Terms of reference for the local advisory board.....	A43
<b>Appendix 11</b> Letter from Rick Kolstad and Deb Peters.....	A49
<b>Appendix 12</b> La Ronge local advisory board meeting dates.....	A51
<b>Appendix 13</b> Newspaper articles - The La Ronge Northerner.....	A53

**APPENDICES  
LIST OF TABLES**

	<b>PAGE#</b>
Table A2-1: List of Common and Scientific Names Birds, Fish, Wildlife and vegetation.....	A3
Table A6-1: Saskatchewan Provincial Government Departments and Agencies Responsible for Land and Resource Management.....	A31
Table A6-2: Federal Government Departments and Agencies Responsible For Land and Resource Management.....	A34
Table A13-1: Newspaper Articles — The La Ronge Northerner.....	A53

**LIST OF FIGURES**

	<b>PAGE#</b>
Figure A1-1: Ecoregions Within the Planning Area.....	A2
Figure A5-1: Woodland Caribou Sensitive Resource Zone and Associated Forest Habitat.....	A20
Figure A5-2: Napatak Recreation Subdivision.....	A24
Figure A5-3: Lamp Lake Special Management Area.....	A25
Figure A5-4: Rabbit Creek Special Management Area.....	A26
Figure A5-5: Potato Lake Rural Residential Subdivision.....	A27
Figure A5-6: Eagle Point Residential Subdivision.....	A29

**Appendix 1**

**Figure A1-1**

**ECOREGIONS WITHIN THE PLANNING AREA**

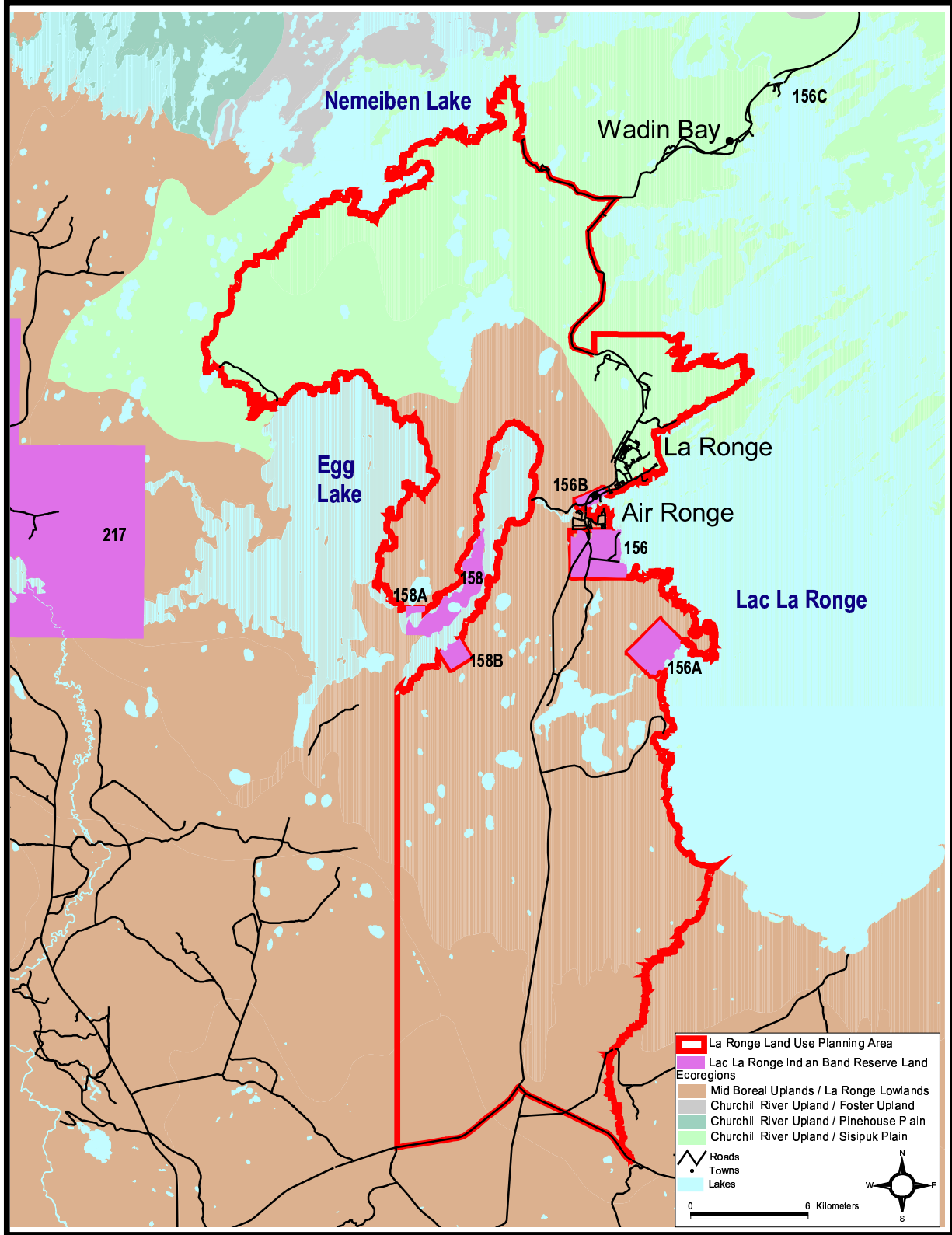


Figure A1-1 Ecoregions within the planning area.

## Appendix 2

Table A2-1

### LIST OF COMMON AND SCIENTIFIC NAMES — BIRDS, FISH, MAMMALS, AND VEGETATION

SPECIES	SCIENTIFIC NAME
<b>Birds</b>	<b>Birds</b>
Connecticut Warbler	<i>Oporonis agilis</i>
Northern Three-toed Woodpecker	<i>Picoides tridactylus</i>
Osprey	<i>Pandion haliaetus</i>
Bald Eagle	<i>Haliaeetus leucocephalus</i>
Red-breasted Merganser	<i>Mergus serrator</i>
White-throated Sparrow	<i>Zonotrichia albicollis</i>
American Redstart	<i>Setophaga ruticilla</i>
Oven Bird	<i>Seiurus aurocapillus</i>
Hermit Thrush	<i>Catharus guttatus</i>
Buffle Head	<i>Bucephala albeola</i>
Black-capped Chickadee	<i>Parus atricapillus</i>
Pileated Woodpecker	<i>Dryocopus pileatus</i>
Boreal Owl	<i>Aegolius funereus</i>
Barred Owl	<i>Strix varia</i>
Red-breasted Nuthatch	<i>Sitta canadensis</i>
Northern Flicker	<i>Colaptes auratus</i>
Tree Swallow	<i>Tachycineta bicolor</i>
Belted Kingfisher	<i>Megaceryle alcyon</i>
Common Goldeneye	<i>Bucephala clangula</i>
Spruce Grouse	<i>Canachites canadensis</i>
Ruffed Grouse	<i>Bonasa umbellus</i>

<b>SPECIES</b>	<b>SCIENTIFIC NAME</b>
<b>Birds</b>	<b>Birds</b>
Common Nighthawk	<i>Chordeiles minor</i>
Bank Swallow	<i>Riparia riparia</i>
Cape May Warbler	<i>Dendroica tigrina</i>
Mourning Warbler	<i>Oporornis philadelphia</i>
Bay-breasted Warbler	<i>Dendroica castanea</i>
Black-and-white Warbler	<i>Mniotilta varia</i>
Magnolia Warbler	<i>Dendroica magnolia</i>
Chestnut-sided Warbler	<i>Dendroica pensylvanica</i>
Ruby-crowned Kinglet	<i>Regulus calendula</i>
Swamp Sparrow	<i>Melospiza georgiana</i>
Wood Thrush	<i>Hylocichla mustelina</i>
Cedar Waxwing	<i>Bombycilla cedrorum</i>
Blue Jay	<i>Cyanocitta cristata</i>
Sharp-tailed Grouse	<i>Tympanuchus phasianellus</i>
Cooper's Hawk	<i>Accipiter cooperii</i>
Sandhill Crane	<i>Grus canadensis</i>
Canada Goose	<i>Branta canadensis</i>
Great Blue Heron	<i>Ardea herodias</i>
Grebe	<i>Podicipedidae</i>
Great Grey Owl	<i>Strix nebulosa</i>
Red-tailed Hawk	<i>Buteo jamaicensis</i>
Great Horned Owl	<i>Bubo virginianus</i>
Common Raven	<i>Corvus corax</i>
Canada Jay (Whiskey-jack)	<i>Perisoreus canadensis</i>
Mallard	<i>Anas platyrhynchos</i>

<b>SPECIES</b>	<b>SCIENTIFIC NAME</b>
<b>Birds</b>	<b>Birds</b>
Spotted Sandpiper	<i>Actitis macularia</i>
American Robin	<i>Turdus migratorius</i>
Yellow-bellied Sapsucker	<i>Sphyrapicus varius</i>
White-throated Sparrow	<i>Zonotrichia albicollis</i>
Yellow-rumped Warbler	<i>Dendroica coronata</i>
White Pelican	<i>Pelecanus erythrorhynchos</i>
Eastern Bluebird	<i>Sialia sialis</i>
Willow Ptarmigan	<i>Lagopus lagopus</i>
Common Loon	<i>Gavia immer</i>
<b>Fish</b>	<b>Fish</b>
Lake Trout	<i>Salvelinus namaycush</i>
Arctic Grayling	<i>Thymallus arcticus</i>
Northern Pike	<i>Esox lucius</i>
Walleye	<i>Stizostedion vitreum</i>
Lake Whitefish	<i>Coregonus clupeaformis</i>
Burbot	<i>Lota lota</i>
Yellow Perch	<i>Perca flavescens</i>
Common Cisco	<i>Coregonus artedi</i>
Longnose Sucker	<i>Catostomus catostomus</i>
Common White Sucker	<i>Catostomus commersoni</i>
Trout Perch	<i>Percopsis omiscomaycus</i>
Nine Spine Stickleback	<i>Pungitius pungitius</i>
Three Spine Stickleback	<i>Gasterosteus aculeatus</i>
Spot-tail Shiner	<i>Notropis hudsonius</i>
Black-nose Shiner	<i>Notropis heterolepis</i>

<b>SPECIES</b>	<b>SCIENTIFIC NAME</b>
<b>Fish</b>	<b>Fish</b>
Iowa Darter	<i>Etheostoma exile</i>
Lake Chub	<i>Couesius plumbeus</i>
Slimy Sculpin	<i>Cottus cognatus</i>
Sauger	<i>Stizostedion canadense</i>
Brook Trout	<i>Salvelinus fontinalis</i>
Longnose Dace	<i>Rhinichthys cataractae</i>
Log Perch	<i>Percina caprodes</i>
Brook Stickleback	<i>Culaea inconstans</i>
Deepwater Sculpin	<i>Myoxocephalus thompsoni</i>
Emerald Shiner	<i>Notropis atherinoides</i>
Fathead Minnow	<i>Pimephales promelas</i>
Johnny Darter	<i>Etheostoma nigrum</i>
Creek Chub	<i>Semotilus atromaculatus</i>
<b>Mammals</b>	<b>Mammals</b>
Moose	<i>Alces alces</i>
Woodland Caribou	<i>Rangifer caribou</i>
Black Bear	<i>Ursus americanus</i>
Timber Wolf	<i>Canis Lupus</i>
Mule Deer	<i>Odocoileus hemionus</i>
White-tailed Deer	<i>Odocoileus virginianus</i>
Elk	<i>Cervus canadensis</i>
Beaver	<i>Castor Canadensis</i>
Lynx	<i>Felis lynx</i>
Wolverine	<i>Gulo gulo</i>
Fisher	<i>Martes pennanti</i>

<b>SPECIES</b>	<b>SCIENTIFIC NAME</b>
<b>Mammals</b>	<b>Mammals</b>
Snow-shoe Hare	<i>Lepus americanus</i>
River Otter	<i>Lutra canadensis</i>
Muskrat	<i>Ondatra zibethicus</i>
Marten	<i>Martes americana</i>
Mink	<i>Mustela vison</i>
Red Squirrel	<i>Tamiasciurus hudsonicus</i>
Short-tailed Weasel	<i>Mustela erminea</i>
Red Fox	<i>Vulpes vulpes</i>
<b>Vegetation</b>	<b>Vegetation</b>
White Spruce	<i>Picea glauca</i>
Trembling Aspen	<i>Populus tremuloides</i>
White Birch	<i>Betula papyrifera</i>
Willow	<i>Salix</i> L.
Green Alder	<i>Alnus sinuata</i>
Black Spruce	<i>Picea mariana</i>
Jack Pine	<i>Pinus banksiana</i>
Tamarack	<i>Larix laricina</i>
Wild Rice	<i>Zizania palustris</i>



## Appendix 3

### THE MINERAL INDUSTRY IN SASKATCHEWAN

#### **Administration of Mineral Resources**

Saskatchewan Industry and Resources (SIR) is responsible for the administration of all Crown-owned mineral and petroleum commodities, including quarried commodities, in the Province, with the exception of aggregates (sand, gravel, and structural clay) and horticultural peat which are administered by Saskatchewan Environment (SE). In the planning area, SE also administers the Crown surface rights for the Province. This includes monitoring the environmental regulation of mining operations and the rehabilitation of sites.

SIR controls the disposition of Crown mineral rights through the administration of the following provincial legislation:

- C The Department of Energy and Mines Act;
- C The Oil and Gas Conservation Act;
- C The Crown Minerals Act;
- C The Freehold Oil and Gas Production Tax Act;
- C The Mineral Taxation Act, 1983;
- C The Mineral Resources Act, 1985; and
- C The Pipe Lines Act.

There are two main types of mineral dispositions, a mineral claim and a mineral lease. A mineral claim allows the claim holder the exclusive right to explore for minerals within the claim area. The claim is held on a year to year basis by expending the required amount on exploration and by filing the work for assessment credit. The claim holder has a guaranteed right to convert the claim to a lease assuming that all of the requirements are met. A mineral lease allows the holder the exclusive right to develop and produce from the lease area subject to royalty payments to the provincial government. A mineral lease has a renewable term of ten years. Mineral claim and lease holders have a guaranteed right of access to their dispositions, subject to meeting the requirements of the surface permits and leases issued by SE.

#### **Land Use Planning — Principles, Issues, and Recommendations**

From the perspective of Saskatchewan Industry and Resources, the following principles, issues, and recommendations are essential to the mining industry and must be incorporated into all land use planning activities:

##### **Principles:**

- C To ensure the best use of Saskatchewan's non-renewable resources by maintaining access to land for mineral exploration and development whenever possible.
  
- C To provide security of tenure of mineral rights. Compensation to be provided to mineral

rights holders whose lands have been voluntarily surrendered for other land uses. There is no legislative provision under the Crown Minerals Act for the expropriation of existing mineral dispositions.

- C To ensure that land use decisions take into consideration both known and potential mineral resources. The potential economic loss must be considered for any proposals which would restrict access to these resources.
- C To ensure that the mineral industry is consulted on land use decisions.

### **Land Use Issues and Management Recommendations:**

Two land use issues are vital to the mineral industry: (1) Access to Land; and (2) Compensation.

#### **(1) Access to Land**

##### **Issues**

- C Potential conflicts with other land uses or priorities may restrict access to land for mineral exploration and development.
- C Limitations on mineral exploration and development will have negative economic implications. Land lost from mineral exploration and production represents a potential economic loss to the Province. Any loss of economic development and employment opportunities in rural and northern parts of the Province is serious, as these areas suffer from high unemployment. This is particularly important in the La Ronge Planning Area as mineral exploration and mine contracting are important industries in the region.

##### **Recommendations**

- C For any land use proposal that could restrict mineral exploration and development the following course of action is required:
  - < Contact Saskatchewan Industry and Resources (SIR) to evaluate the mineral potential of the specific area. SIR has already identified existing mineral deposits and potential mineral resources by conducting a mineral resource assessment of that area. Periodic updates of this assessment will be required to incorporate new information, including input from the mining industry, as part of an ongoing process.
  - < SIR will identify existing mineral dispositions in the area from current mineral disposition maps.
  - < Using this information, negotiations among the various stakeholders will resolve conflicts where possible. Options could include moving the site of the conflicting use to one of lower mineral potential, or the land use proposal could be altered to address the concerns of the mineral interests.

## **(2) Compensation**

### **Issue:**

- C Mineral exploration and development involve a high risk of investment over a significant time span, and will not occur if there are uncertainties about tenure of mineral rights. If resolution to a disputed site cannot be reached and existing mineral dispositions are voluntarily surrendered by the holders, the disposition holders must be adequately compensated. There is no legislative provision for the expropriation of existing mineral dispositions.

### **Recommendation:**

- C Develop a compensation process, involving the mineral industry, SE, SIR and other affected stakeholders.

## **Mineral Exploration and Production**

The mineral industry can be divided into two main components — exploration and production. Initial mineral exploration covers large tracts of land and is generally non-invasive, involving minimal surface disturbance. Successive exploration programs become more focused on target identification. Mineral exploration is a high risk activity and because of the risk, is generally difficult to finance.

Mineral production is a site specific activity, with a high impact on a small area (from ten to a few hundred hectares). Production is relatively easy to finance because of the relative certainty gained from a positive economic feasibility study and a defined mineral resource.

All developments are subject to stringent Environmental Impact Assessment (EIA) processes before any approval is given for development. The EIA includes requirements for rehabilitating the site following production.

## **The Mineral Exploration Process**

The following describes the general mineral exploration process from the initial stages through to the mine development:

**Initial research** to outline a region of interest, usually for a specific mineral deposit type. This may include:

1. government geology and mineral reports and maps, assessment files, mineral deposit index, mineral disposition maps, etc.;
2. discussions with government geologists; and
3. private (company or individual) information where available.

**Regional “grassroots” exploration** to define more specific areas of interest (thousands to hundreds of thousands of hectares). This may include:

- C Prospecting, reconnaissance geologic mapping, reconnaissance geochemical sampling (e.g. rock, soil, lake and stream sediment) and airborne geophysical surveying. These activities take place over large areas and have no impact on the landscape.

The **staking of mineral claims** over specific areas of interest.

- C A mineral claim grants the holder the sole right to explore within the claim boundary. Claim tags and registration forms must be acquired from the local mining recorder's office prior to the staking of the mineral claims. Up-to-date mineral disposition maps from the mining recorder's office should be checked before any staking is done to ensure that there is not a conflict with existing dispositions or reserves. The claims are rectangular in shape and are marked on the ground with four, tagged corner posts joined by cut and flagged lines. The claims must be registered with the mining recorder's office.

**Property-scale exploration** to identify and define targets (hectares to hundreds of hectares).

- C A surface exploration permit from SE is required before any of this work can be done on Crown land. Typically the first step in property-scale exploration is the cutting by hand of a reference grid over the area(s) of interest. The initial work may normally consist of geologic mapping, prospecting and rock sampling, geochemical sampling, and geophysical surveying. These activities have minimal impact on the landscape.

If specific exploration targets or sites of mineralization are identified they will be examined in detail (scale of hectares). If the mineralization occurs at or near surface the area is often trenched or stripped by hand or with equipment and sampled. The depth and length extent of surface mineralization and/or undefined geophysical or geological targets may be evaluated with diamond drill holes that produce cores of rock which can be examined, logged, and sampled. This phase of exploration typically has a significant impact on localized areas as heavy equipment is commonly involved and temporary access roads may be required. Reclamation of disturbed sites is required.

**Mineral deposit delineation program** (hectares to tens of hectares).

- C In the very rare situation where significant mineralization is discovered, a delineation diamond drill program is carried out to define the dimensions and grade of the deposit. Commonly other exploration activities are also conducted such as mapping, trenching, stripping, rock sampling, and geophysical surveying. Several phases of drilling may be carried out. In the later stages of this delineation process underground exploration will also sometimes be conducted which requires the excavation of an exploration shaft or ramp. Underground excavations may require the approval of an Environmental Impact Assessment (see Mining below). Bulk samples of tens to hundreds of tonnes are commonly taken for metallurgical testing. This advanced stage of exploration typically involves a high level of surface disturbance on a small area. The reclamation of the disturbed area(s) is required.

**Mining of the orebody** (ten to a few hundred hectares).

- C In the extremely rare situation where an economic orebody is delineated,

mining may take place following a rigorous Environmental Impact Assessment (EIA) process that assesses all environmental and societal impacts of the proposed development. Mining will have a high impact on a small area, typically from ten to a few hundred hectares. The EIA includes the requirements for rehabilitating the site following production. This is supported by a performance bond posted by the company. SE and Saskatchewan Northern Affairs (SNA) regulate the EIA process and must approve the EIA before granting a surface lease for the mine. The company must also convert the mineral claim(s) to a mineral lease(s) before production can take place.

In summary, initial mineral exploration requires large land areas where the exploration activities have no significant impact on the landscape. Successive stages of exploration target progressively smaller areas where some impact on the landscape may occur. These stages of exploration require surface exploration permits issued by SE, with specific regulations governing activities and the reclamation of disturbed sites. In the extremely rare situation where a mineral orebody is to be mined, an EIA must be approved by SE and SNA prior to the granting of the surface lease necessary for mining to take place.

### **Environmental Impacts**

The potential impacts of mineral exploration and development activities and the amounts of land disturbed will vary depending on the mining stage (exploration, milling, processing, or decommissioning). These activities can impact bio-diversity in several ways, including increasing access to remote areas, fragmentation of habitat and contamination through pollution. For these reasons, careful planning and a comprehensive approvals process is required.

Mineral exploration may disturb a larger area than actual mining, but to a lesser degree. Exploration requires temporary access to large tracts of land to increase the chances of finding an economic mineral deposit. The traditional view is that ecosystem impacts are temporary and localized, but more information on the area disturbed and potential impacts on bio-diversity is needed to confirm this.

Milling and processing require a smaller land base, but their impact in terms of tailings and waste rock disposal, as well as the mine site and associated infrastructure, can be more significant and longer term than exploration. The degree of impact depends on the type of mine and the processing methods used. The primary impact of mines in the boreal shield is on aquatic biodiversity due to discharge of effluents into the water.

Raw mill effluents can be high in heavy metals and levels of suspended solids. Proper disposal of mine tailings and associated mine drainage is essential to avoid toxicity problems in localized areas and more widespread impacts on aquatic biota. Provincial regulations are aimed at ensuring that water quality levels downstream of the treated waste water discharge are at, or close to, the natural background levels of potential contaminants, minimizing overall effects on surface water quality and aquatic biota. The mining industry needs to continue to monitor and address these issues to ensure the long-term containment of mining wastes and

to protect ecosystems in the boreal shield.

Enforcement and compliance concerns in the mining industry revolve around spills and clean-up of mining related materials. Contaminated or hazardous materials from the mining operation occasionally spill onto the ground in the area of a mine. Spills occur due to equipment failure (i.e., broken pipes, leaking valves) or as a result of human error. Spills outside of containment areas are generally recovered by a vacuum truck, when possible, and deposited in a tailing or sludge pond. Any contaminated ground is removed by heavy equipment and placed in the same ponds. These spills generally have little or no environmental impact if cleaned up in short order. Compliance with provincial legislation is achieved by reporting the spill and undertaking clean-up procedures as ordered by the appropriate SE official.

Another common type of spill involves petroleum products (e.g., diesel fuel, engine oil) leaking from vehicles and equipment. Damage to equipment and/or accidental spillage can result in a relatively small amount of product being deposited on the ground. Clean-up involves removal of the contaminated soil to an appropriate location. All mines have staff trained to handle such spills and have usually completed the clean-up before an on-site inspection. Spills are reported via a toll free number to the Spill Report Center located in Prince Albert.

Containment dikes, berms and ditches around ponds, waste rock, ore and special waste piles are designed to prevent the release of contaminated water to the environment. Infrequently, human error or uncontrollable circumstances may lead to a release which cannot be contained. Power failures and heavy rainfall have led to such releases in the past. Each occurrence is reported by the company, investigated and remediated if required. Additional enforcement action may be taken by SE depending on the nature and volume of the release and the potential for impacts to the environment.

Other compliance activities involve mineral exploration. Permitted areas are checked regularly to ensure compliance with provincial legislation. Surface leases are checked to ensure the correct areas are being used for roads, camps, landings and other permitted activities. Abandoned sites are also checked to ensure compliance with litter regulations. Charges may be laid where an abandoned site is not left in a natural state.

### **Saskatchewan Industry and Resources Contacts**

Andrew Gracie; Resident Geologist (La Ronge)  
Tel.: (306)-425-4499.

Mike O'Brien; Mining Recorder (La Ronge)  
Tel.: (306)-425-4600.

Murray Rogers; Mineral Resource Assessment Geologist (Regina)  
Tel.: (306)-787-1932.

**Appendix 4**

**LA RONGE INTEGRATED LAND USE MANAGEMENT PLAN**

**Zoning Framework**



**LA RONGE INTEGRATED LAND USE MANAGEMENT PLAN**  
**Zoning Framework**

ZONE TYPE	PURPOSE OF ZONE	ACTIVITIES AND DEVELOPMENTS ALLOWED IN ZONE	ACTIVITIES AND DEVELOPMENT NOT ALLOWED IN ZONE
<b>Sensitive Resource Zone</b>	<p>, <b>Management areas containing natural or heritage resources that are sensitive to disturbance or development.</b></p> <p>, <b>Any development or activity occurring in a sensitive resource zone must exercise special precautions or constraints.</b></p> <p>, <b>Management Objective: To minimize the impact of any disturbance and development.</b></p>	<p>, Activities and developments of an extensive (i.e., dispersed) nature that result in minimal impact will be allowed in this area. Uses that will have significant impacts or long lasting effects will be considered for review.</p> <p>, The following activities will be allowed:</p> <ul style="list-style-type: none"> <li>C Sustainable hunting, trapping, fishing and camping</li> <li>C Non-motorized recreational activities</li> <li>C Motorized recreational activities along designated roads and trails</li> </ul> <p>, The following developments and activities will be allowed, based upon an approved plan, policy or guidelines that provide for protection of sensitive features of the area:</p> <ul style="list-style-type: none"> <li>C Roads, trails, and utilities</li> <li>C Industrial developments</li> <li>C Mineral exploration and mine development</li> <li>C Sand and gravel exploration and development</li> <li>C Commercial harvesting of forest products (i.e., timber and non-timber) and renewal activities</li> <li>C Outfitting and ecotourism activities (e.g., trail use, tours)</li> <li>C Traditional resource use (TRU) cabins</li> <li>C Wildrice</li> <li>C Shoreline alteration developments</li> <li>C Institutional, educational, and scientific research activities</li> </ul>	<p>, Activities and developments that have any potential significant impacts on the sensitive features of the area.</p> <ul style="list-style-type: none"> <li>C agriculture</li> <li>C remote recreation and residential cabin development</li> <li>C subdivision development</li> <li>C recreational development (e.g., golf courses, serviced campgrounds)</li> <li>C commercial and institutional development (e.g., permanent structures and permanent overnight accommodation)</li> </ul>
<b>Future Community Expansion Zone</b>	<p>, <b>Areas identified for possible future expansion of local First Nations and municipal communities located within the planning area.</b></p> <p>, <b>Management Objective: To ensure that any development does not compromise the potential expansion of local First Nations or municipal communities.</b></p>	<p>, Activities and developments of an extensive (i.e., dispersed) nature that result in minimal impact will be allowed in this area. Any application made for an activity or development more intensive (i.e., concentrated) in nature and having a significant and/or long lasting impact will require the permit/application for review by the Town, Village, and the Band.</p> <p>, The following activities will be allowed:</p> <ul style="list-style-type: none"> <li>C Sustainable hunting, trapping, fishing, and camping</li> <li>C Non-motorized recreational activities</li> <li>C Motorized recreational activities along designated roads and trails</li> </ul> <p>, Commercial and industrial development and activities must occur within the boundaries of First Nations and municipal communities. Only those commercial and industrial developments and activities that cannot be accommodated within the boundaries of these local communities will be considered for Future Community Expansion Zones given various conditions and/or provision of development plans:</p> <ul style="list-style-type: none"> <li>C Roads, trails, and utilities</li> <li>C Industrial developments</li> <li>C Mineral exploration and mine development</li> <li>C Sand and gravel exploration and development</li> <li>C Commercial harvesting of forest products (i.e., timber and non-timber) and renewal activities</li> <li>C Outfitting and ecotourism activities (e.g., trail use, tours)</li> <li>C Wildrice</li> <li>C Traditional resource use (TRU) cabins</li> <li>C Shoreline alteration developments</li> <li>C Institutional, educational, and scientific research activities</li> </ul>	<p>, Activities and developments that have any potential significant impacts on the sensitive features of the area.</p> <ul style="list-style-type: none"> <li>C agriculture</li> <li>C remote recreation and residential cabin development</li> <li>C subdivision development</li> <li>C recreational development (e.g., golf courses, serviced campgrounds)</li> <li>C commercial and institutional development (e.g., permanent structures and permanent overnight accommodation)</li> </ul>

ZONE TYPE	PURPOSE OF ZONE	ACTIVITIES AND DEVELOPMENTS ALLOWED IN ZONE	ACTIVITIES AND DEVELOPMENT NOT ALLOWED IN ZONE
Resource Lands Zone	<p>, Areas that will allow for the sustainable, environmentally sensitive, and integrated development of a variety of activities and uses to facilitate the optimization of economic, social, and environmental benefits.</p> <p>    c Note: As ore reserves are limited the activities of mineral exploration and mining can not be carried out in a sustainable manor.</p> <p>, <b>Management Objective:</b> To accommodate environmentally sound ventures by providing direction and guidance that reduces or eliminates conflict and negative environmental impact.</p>	<p>, A broad range of developments and activities can be considered for this area, subject to federal, provincial, and/or municipal policies and regulations.</p> <p>, Allowable activities include:</p> <ul style="list-style-type: none"> <li>    c Sustainable hunting, fishing, trapping, and camping</li> </ul> <p>, Commercial and industrial development and activities must occur within the boundaries of First Nations and municipal communities. Only those commercial and industrial developments and activities that cannot be accommodated within the boundaries of these local communities will be considered for the Resource Lands Zone given various conditions and/or provision of development plans.</p> <ul style="list-style-type: none"> <li>    c Residential subdivisions will be allowed with development plans and if subdivision capacities have been reached</li> <li>    c Industrial development</li> <li>    c Mineral exploration and mine development</li> <li>    c Sand and gravel exploration and development</li> <li>    c Roads, trails, and utilities</li> <li>    c Commercial harvesting of forest (i.e., timber and non-timber) products and renewal activities</li> <li>    c Wildrice</li> <li>    c Traditional resource use (TRU) cabins</li> <li>    c Shoreline alteration development</li> <li>    c Outfitting and ecotourism activities (e.g., trail use, tours)</li> <li>    c Institutional, educational, and scientific research activities.</li> <li>    c Backcountry camping</li> </ul>	<p>, Remote recreational and residential cabins</p> <p>, Agriculture</p>
Protected Zones/Sites	<p>, Management areas and sites with the greatest degree of restrictions on use to ensure the highest degree of protection or preservation of significant, unique, or rare cultural or natural resources.</p> <p>, Protected zones or sites have not yet been identified in the planning area. The Local Advisory Board would like to have the option of designating protected zones and/or sites in the future. These zones and sites will be incorporated into the Plan as they are identified.</p> <p>, <b>Management Objective:</b> To avoid disturbance of significant, unique, or rare cultural and natural resources, including the following:</p> <ul style="list-style-type: none"> <li>    c Areas of cultural significance (e.g., archeological sites, burial sites, historical sites, and historical trails)</li> <li>    c Environmentally unique areas; and</li> <li>    c Areas proven to contain endangered species.</li> </ul>	<p>, Sustainable hunting, trapping, fishing, and non-commercial gathering, camping, and non-motorized recreation access along existing roads and trails.</p> <p>, Snowmobile and all terrain vehicle (ATV) use limited to existing trails.</p> <p>, Ecotourism activities (e.g., trail use, birdwatching, photography)</p> <p>, Environmental education, scientific research, and ecosystem monitoring and surveys</p>	<p>, Commercial , industrial, new residential, and cabin development.</p> <p>, Sand and gravel exploration and development</p> <p>, Road and utility development</p> <p>, Intensive recreation developments such as serviced campgrounds, golf courses, and motorized vehicle trails</p> <p>, Mineral exploration and mine development</p> <p>, New or expanded wild rice operations</p> <p>, New groomed snowmobile trails</p> <p>, Commercial harvest of forest products.</p> <p>, Agriculture</p>
Developed Areas	<p>, Areas that allow for the recognition and accommodation of compatible developments within existing subdivided areas, and that allow the incorporation of these subdivided areas into the Plan.</p> <p>, <b>Management Objective #1:</b> To review and incorporate existing land use strategies for these subdivided areas into the Plan and to develop specific zoning regulations for:</p> <ul style="list-style-type: none"> <li>- Napatak, Lamp Lake, Rabbit Creek, Potato Lake, Eagle Point, Title Properties</li> </ul> <p>, <b>Management Objective #2:</b> To work cooperatively with subdivision residents to address future development needs.</p>	<p>, Generally activities and developments of a more intensive (i.e., concentrated) nature such as residential, agriculture, recreational, and accessory uses (e.g., power, lagoons, landfill, telephone).</p>	<p>, Uses incompatible to future development of subdivision.</p>

## Appendix 5

### LAND USE MANAGEMENT ZONES — A DESCRIPTION

The purpose of this appendix is to provide a more detailed description of the specific land use management zones introduced in Chapter 3. In particular, this discussion focuses on the **developed areas, sensitive resource zones, and future community expansion zones** that have been identified. Figure 3-1 illustrates the location of these land use management zones in the La Ronge Planning Area.

#### Sensitive Resource Zones

Sensitive resource zones are those areas consisting of natural and cultural resources that are sensitive to disturbance. Any development or activity that would occur in a sensitive resource zone would require special precautions or constraints to minimize any impact on resources. Woodland Caribou, Aesthetic, and Riparian Sensitive Resource Zones have been identified in the planning area.

#### Woodland Caribou Sensitive Resource Zone

The Woodland Caribou Sensitive Resource Zone has been designated to ensure that development and other activities have minimal impact on the woodland caribou that inhabit the area. This woodland caribou population requires large tracts of desirable habitat. This area is also used for calving purposes. This zone covers an area of approximately 16,880 ha (i.e., 15,400 ha of land and 1,480 of water) in the northern end of the planning area and extends from the south shore of Nemeiben Lake to the north shore of Egg Lake (See Figure A5-1). Its northeastern corner lies adjacent to Lac La Ronge Provincial Park. A travel corridor for the caribou extends from this sensitive zone to the park.

In May 2000, the Committee on the Status of Endangered Wildlife in Canada (COSEWIC) designated the boreal population of woodland caribou as **threatened**. The comparable committee in Saskatchewan has also adopted this COSEWIC designation. Saskatchewan Environment is currently reviewing this recommendation. The COSEWIC designation of threatened does require the province to produce a recovery strategy for woodland caribou within a two-year period.

“Woodland caribou do not cope well with disruption, whether man-made or of a natural source. Unlike natural disturbances, some kinds of human activities prevent the environment from restoring itself to a pre-disturbance state and result in permanent scars on the land. Roads and trails act as migration barriers and wildfire creates habitat structure that is not favorable to this species. Caribou generally move from disturbed areas to more favorable wetland and/or forest complexes”. (Tim Trottier, personal conversation 2000)

Three recreational leases, one traditional resource use (TRU) cabin, and two mineral claims are found in the Woodland Caribou Sensitive Resource Zone.

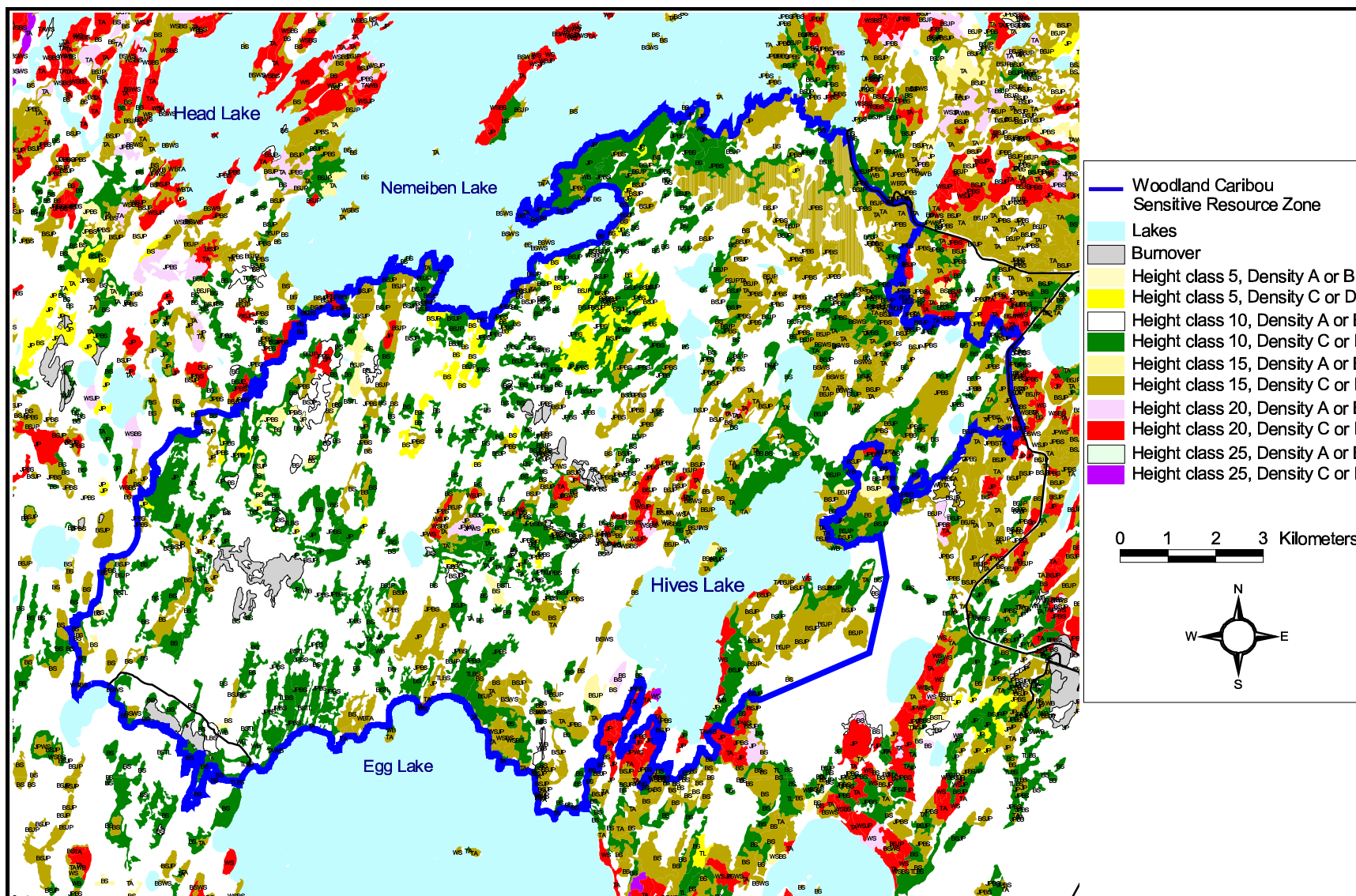


Figure A5-1 The Woodland Caribou Sensitive Resource Zone and associated forest resources.

### **Aesthetic Sensitive Resource Zones**

Aesthetic Sensitive Resource Zones are those areas identified throughout the planning area for the purposes of preserving scenic views from both land and water viewpoints. Such zones have been identified at the Munroe Peninsula on Nemeiben Lake and areas of variable width along the highways and other main roads in the planning area.

### **Riparian Sensitive Resource Zones**

Riparian Sensitive Resource Zones are areas or buffers, of variable width, that represent a transition between aquatic and terrestrial habitat found along the shore land portions of water bodies located throughout the planning area. The intent of these zones is to maintain the health of the aquatic and terrestrial ecosystems and, as such, protect the habitat and water quality and quantity. They are also intended for the management of natural drainage systems, that may or may not be suitable fish habitat.

### **Future Community Expansion Zones**

Future Community Expansion Zones are those areas that have been identified for potential future expansion of the communities of the Lac La Ronge Indian Band, the Northern Village of Air Ronge, and the Northern Town of La Ronge (See Figure 3-1). The intent of this type of land use management zone is to ensure that any development does not compromise the potential expansion of local communities.

#### **Lac La Ronge Indian Band**

There are three areas identified for potential future expansion of the Lac La Ronge Indian Band Reserves. Final approval of any proposed expansion within these areas must receive approval from Chief and Council and will have no impact on the Indian Band's future ability to select Treaty Land Entitlements. Lac La Ronge Indian Band potential future community expansion areas include:

- Can area that extends south of the La Ronge Reserve #156 to Potato Lake and Potato River;
- Can area west of La Ronge Reserve #156 to Bigstone Lake and south of Air Ronge. (This area has been designated as potential future community expansion zone for both the Lac La Ronge Indian Band and the Northern Village of Air Ronge) and;
- Can area north of La Ronge Reserve #156B north of the Northern Village of Air Ronge and west of the Northern Town of La Ronge to the east shore of Bigstone Lake. (This area has been designated as potential future community expansion zone for the Lac La Ronge Indian Band, the Northern Village of Air Ronge and the Northern Town of La Ronge)

#### **Northern Village of Air Ronge**

There are two areas identified as potential future community expansion for the Northern Village of Air Ronge. Final approval of any proposed expansion within these areas must receive approval of the Mayor and Council of the Northern Village of Air Ronge. The areas identified as potential future community expansion of the Northern Village of Air Ronge include:

- Can area directly south of the Village's corporate limits to the western side of Lac La Ronge Indian Reserve #156 and the eastern shoreline of Bigstone lake. (This area has been designated as future community expansion area for both the Northern Village of Air Ronge and the Lac La Ronge Indian Band) and;

Can area directly north of the Village's corporate limits, north of Lac la Ronge Indian Reserve 156B and west of the Northern Town of La Ronge to the east shoreline of Bigstone Lake. (This area has been identified as future community expansion zone for the Northern Village of Air Ronge, the Lac La Ronge Indian Band, and the Northern Town of La Ronge)

### **Northern Town of La Ronge**

Three areas have been identified as potential future expansion zone for the Northern Town of La Ronge. Final approval of any proposed expansion within these areas must receive approval of the Mayor and Council of the Northern Town of La Ronge. The areas identified as potential future community expansion of the Northern Village of Air Ronge include:

Can area east of La Ronge and north of McGibbon Bay following the shoreline of Lac La Ronge to the airport;

Can area northwest of the airport following the Lac La Ronge Provincial Park boundary to highway #102 and;

Can area west of the Town's corporate limits to the shoreline of Bigstone Lake, north of the Northern Village of Air Ronge and Lac La Ronge Indian Reserve #156B. (This area has been identified as future community expansion zone for the Northern Town of La Ronge, the Lac La Ronge Indian Band, and the Northern Village of Air Ronge)

### **Developed Areas**

Developed Areas are those land use management zones that allow for the recognition and accommodation of compatible development in existing and future subdivisions and, also, private parcels of land located in the planning area, but not situated within the boundaries of the communities of La Ronge, Air Ronge, or the Lac La Ronge Indian Band. The intent of this type of land use management zone is twofold: (1) To provide for the development of local land use controls, which would be consistent with the management strategies of the La Ronge Integrated Land Use Management Plan (the Plan) this , for each developed area; and (2) To direct all new residential development in the planning area away from unoccupied provincial Crown land to these developed areas.

Developed areas, as identified below, are mainly privately owned lands but do include provincial Crown land. Developed areas found within the planning area, and that are all accessible from Highway #2, include the following: Potato Lake Rural Residential Subdivision; Rabbit Creek Special Management Area; Lamp Lake Special Management Area; Napatak Recreation Subdivision; and Eagle Point Residential Subdivision.

### **Napatak Recreation Subdivision**

The Napatak Recreation Subdivision, which is administered by SE, is located south of the Town of La Ronge on the west shore of Lac La Ronge. It covers an area of 40 hectares and consists of 213 residential and 2 commercial lots situated in two separate subdivided areas (See Figure A5-2). The Napatak Subdivision was originally developed for seasonal recreational use. However over the years, a number of year-round residences have been constructed. Management or development guidelines that would place restrictions on seasonal versus year-round use do not exist.

For the purposes of this Plan, the **management objectives** for the Napatak Recreation Subdivision are the following:

1.This developed area is to be used primarily for seasonal and residential purposes and associated recreational activities with limited commercial opportunities providing support for local residents. These uses should be compatible with the overall goal, objectives, and principles of the Plan.

2.To protect these parcels of land from encroachment by potentially conflicting land uses.

### **Lamp Lake Special Management Area**

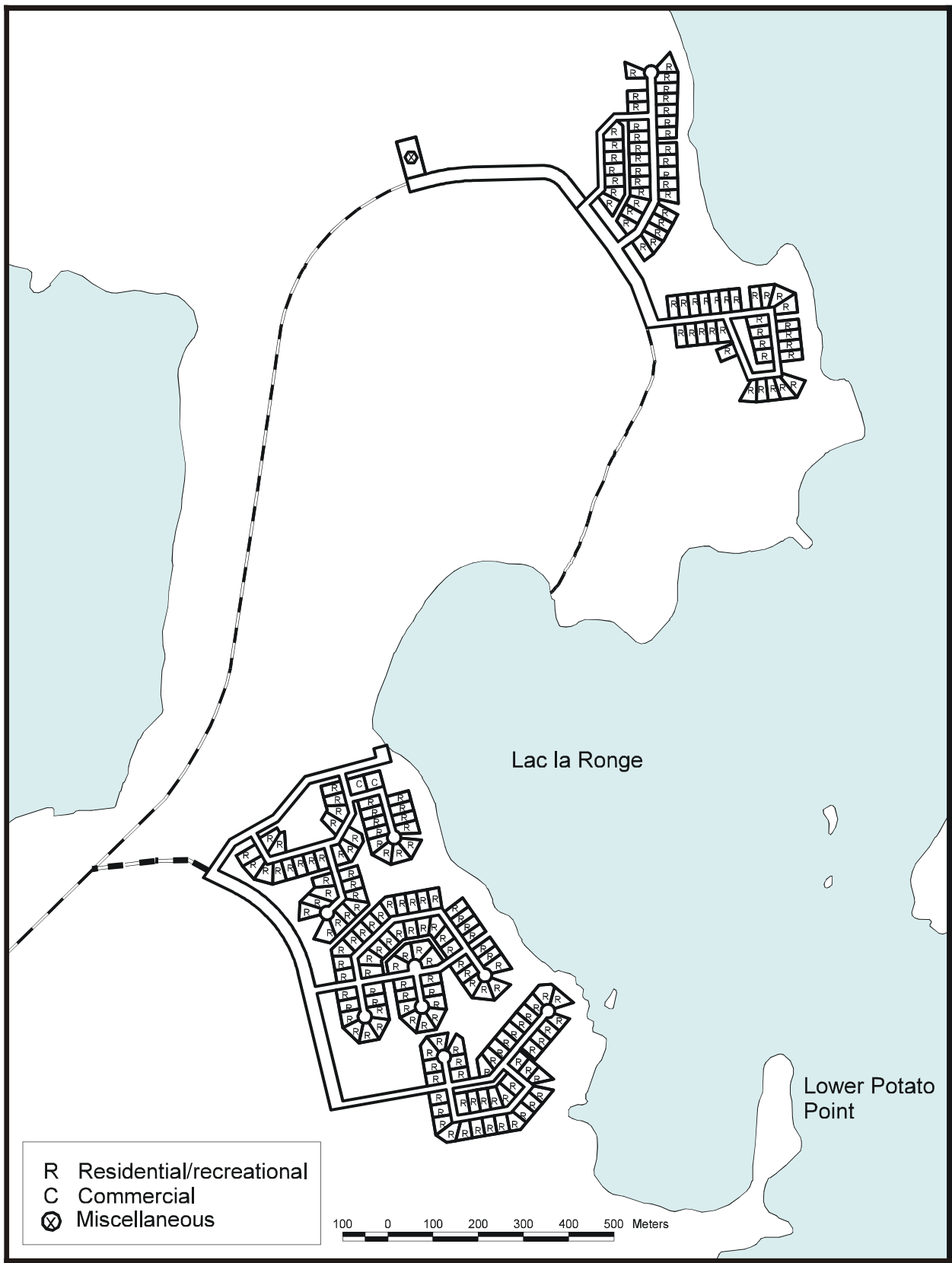
The Lamp Lake Special Management Area is located approximately 5 kilometres west of the Town of La Ronge along Highway #2. This area, which is also administered by SE, was developed in 1990. The original intent of this area was to provide opportunity for agricultural development. The Lamp Lake Special Management Area covers approximately 290 hectares and currently consists of 1 agricultural lease, 1 institutional lease, and 2 residential leases (See Figure A5-3). A development plan has been prepared for this special management area. A homeowners' association has not been established.

For the purposes of this Plan, the **management objectives** for the Lamp Lake Special Management Area are the following:

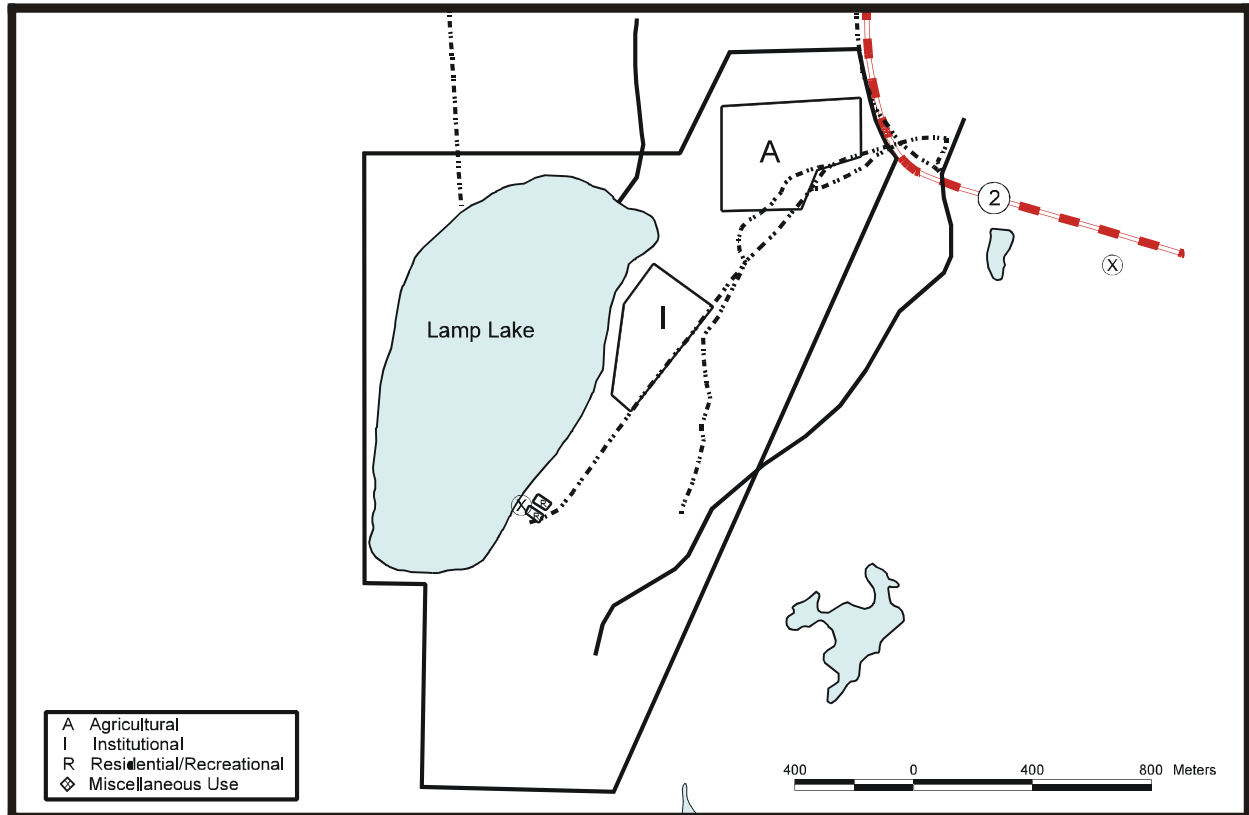
1.To recognize this developed area as an area suitable for limited agricultural, institutional, and residential development that is compatible with the overall goal, objectives, and principles of the Plan; and

2.To protect this developed area from encroachment by potentially conflicting land uses

Continued...



**Figure A5-2** Napatak Recreation Subdivision



**Figure A5-3** Lamp Lake Special Management Area

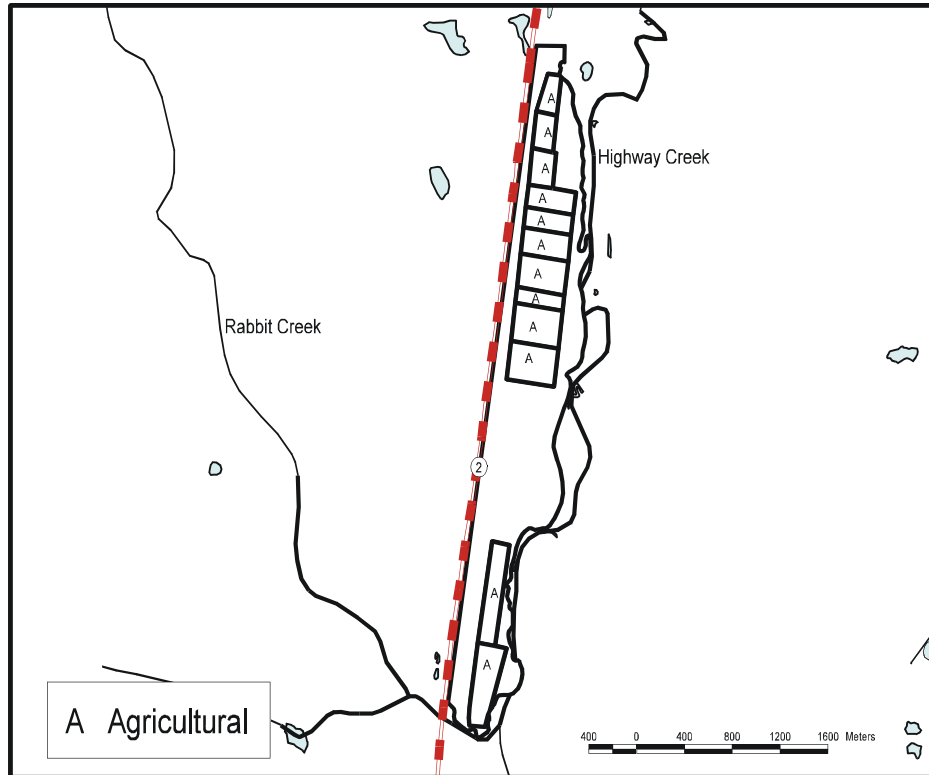
### **Rabbit Creek Special Management Area**

The Rabbit Creek Special Management Area was created in 1992 as a response to the demand for agricultural development in the La Ronge area. This agricultural subdivision, which covers approximately 250 hectares, is located 20 kilometres south of La Ronge on the east side of Highway #2. This area has been established solely for agricultural purposes and provide the opportunity for small scale agricultural development. This area, which is administered by Saskatchewan Environment (SE), is provincial Crown land. Individual lots are allocated on a lease basis. A total of 15 possible lease sites have been made available and range in size from 3 to 13.5 hectares (See Figure A5-4.) (Figure A5-4 only identifies twelve possible lease sites. Shortly after the development of this map, three additional lease sites were identified in the Rabbit Creek Special Management Area). As of Fall 2000, five sites had been leased. A land use plan was prepared by SE for the Rabbit Creek area in November 1992.

For the purposes of this Plan, the **management objectives** for the Rabbit Creek Special Management Area are the following:

1. To recognize this developed area as an area suitable for small scale agricultural development that is compatible with the overall goal, objectives, and principles of the Plan; and

2. To protect this developed area from encroachment by potentially



conflicting land uses.

**Figure A5-4** Rabbit Creek Special Management Area

### **Potato Lake Rural Residential Subdivision**

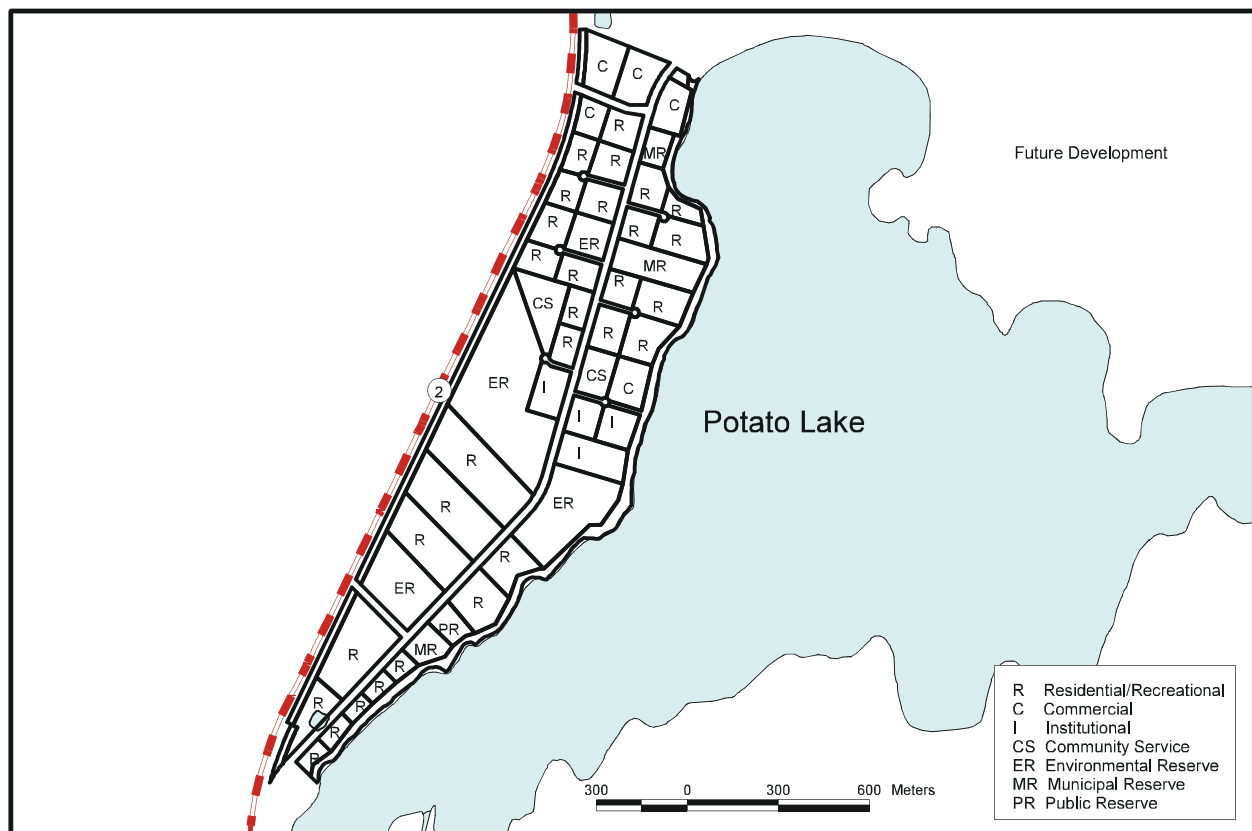
The Potato Lake Rural Residential Subdivision, an area of a rural or semi-wilderness character, is located on the west side of Potato Lake, approximately seven kilometres south of the Village of Air Ronge on the east side of Highway #2. This subdivision covers 162.5 hectares of land and water. In 1987 the provincial government developed a land use plan for this subdivision. The *Potato Lake Land Use Plan* provides general guidelines for land management in the subdivision. It also presents a development plan for rural residential development and limited potential commercial, institutional and agricultural use. The draft plan called for the development of 41 lots -- 27 rural residential, 4 commercial, and 5 institutional and community services--in addition to 5 existing leased lots that existed in the proposed subdivision area in 1987. Forty-four lots were approved for the Potato Lake subdivision. Figure A5-5 provides a general overview of land usage at the Potato Lake subdivision in the late 1990's.

Saskatchewan Environment (SE) is responsible for the administration of the Potato Lake subdivision, while Government Relations and Aboriginal Affairs (GRAA) is responsible for working with subdivision residents to identify and address land use planning and management needs. A private developer has facilitated the development and division of the area into the proposed lots. All land within this subdivision is privately owned with the exception of municipal and environmental reserves. A number of permanent year-round residences have been developed in this subdivision. A local homeowners' association has been established.

In February 2000, many subdivision residents expressed concern that the management guidelines presented in the Potato Lake Land Use Plan should be updated and that the subdivision required definitive bylaws and zoning guidelines to ensure orderly development in the future and to be able to maintain the rural or semi-wilderness character of the area. During Spring 2000, Saskatchewan Municipal Affairs, Culture, and Housing (now GRAA) began working with subdivision representatives to address these concerns.

For the purposes of this Plan, the **management objectives** for the Potato Lake Rural Residential Subdivision are the following:

1. This developed area is to be used primarily for residential purposes and associated activities. However, limited commercial, institutional and agricultural uses that provide support for local residents and that are compatible with the overall goal, objectives, and principles of the Plan may be allowed; and
2. To protect this developed area from encroachment by potentially conflicting land uses.



**Figure A5-5** Potato Lake Rural Residential Subdivision

### **Eagle Point Residential Subdivision**

Eagle Point is a residential subdivision located along the eastern boundary of the Town of La Ronge and on the north-west shore of McGibbon Bay on Lac La Ronge (See Figure A5-6). The entire subdivision is privately owned. Land use within this area has been identified and, subsequently, developed for recreational, residential, and commercial use. Fifty-nine residential and two commercial lots, along with two areas set aside for recreational development have been established in this subdivision. Recreational and commercial development includes a 9-hole golf course (with a proposed expansion), restaurant/clubhouse, and a marina facility.

Government Relations and Aboriginal Affairs is responsible for the administration of this subdivision. A land use plan and corresponding management guidelines have not been developed for this area. A local homeowners' association does not exist.

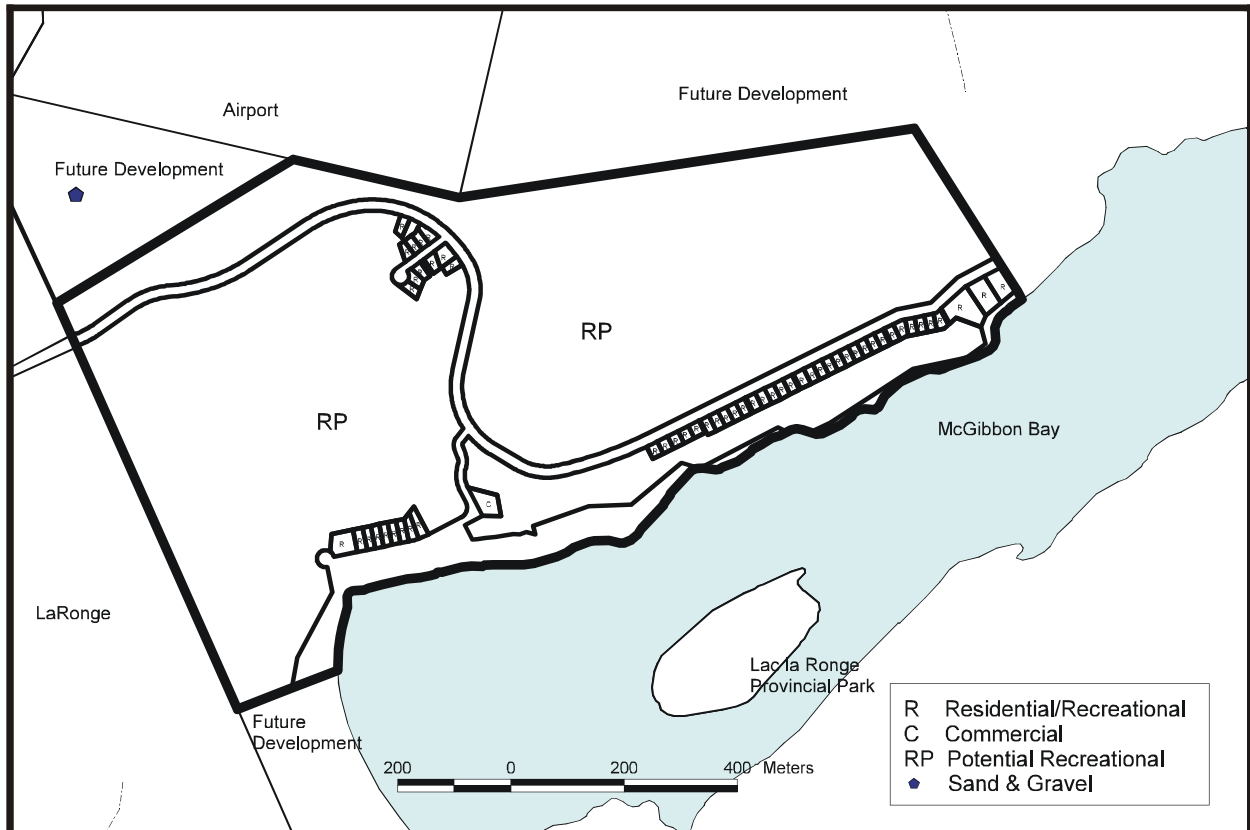
For the purposes of this Plan, the **management objectives** for the Eagle Point Subdivision are the following:

1. To recognize this subdivision as a developed area being suitable for residential, commercial and recreational development that is compatible with the overall goal, objectives, and principles of the Plan; and
2. To protect this developed area from encroachment by potentially conflicting land uses.

For the purposes of this Plan, the **management objectives** for these private parcels of land are the following:

1. To regulate use of private parcels of land to ensure compatibility with surrounding land uses and the management strategies of the Plan; and
2. To protect these parcels of land from encroachment by potentially conflicting land uses.

Continued...



**Figure A5-6** Eagle Point Residential Subdivision

**Privately Titled Land**

Various private parcels of land, which are not situated within the boundaries of First Nation or municipal communities or any of the five existing subdivisions, are found in the La Ronge Planning Area.

Three of these parcels have been developed for residential purposes, while the remaining parcel is being used for commercial purposes (i.e., the year-round operation of an outfitting and tourist accommodation facility). In total, these four parcels of private land cover approximately 6.5 hectares.



## Appendix 6

### PROVINCIAL AND FEDERAL DEPARTMENTS AND AGENCIES RESPONSIBLE FOR LAND AND RESOURCE MANAGEMENT

There are several federal and Saskatchewan provincial government departments responsible for land and resource management. These provincial and federal departments and agencies, along with their main areas of responsibility are presented in Tables A6-1 and A6-2, respectively.

**Table A6-1**

#### Saskatchewan Provincial Government Departments and Agencies Responsible for Land and Resource Management

Department/Agency	Branch	Responsibility
Environment	Environmental Assessment	Coordinates provincial review and evaluations of environmental impacts of proposed developments.
	Environmental Protection	Develops provincial policies and programs related to protection of air, water and soils.
	Fish and Wildlife	Develops and manages provincial fish and wildlife policies and programs.
	Forest Ecosystems	Develops and manages provincial integrated forest resource management programs and policies.
	Fire Management And Forest Protection	Provides and coordinates provincial forest fire management activities.
	Information Management	Provides resource data management services.
	Parks and Facilities	Develops and manages programs and policies for provincial and regional parks.
	Regional Operations	Delivers and manages all SERM policies and programs.
	Sustainable Land Management	Develops provincial land management policies and programs.
Highways and Transportation	N/A	Develops roads and infrastructure.

<b>Department/Agency</b>	<b>Branch</b>	<b>Responsibility</b>
Agriculture , Food and Rural Revitalization	N/A	Promotes sustainable use of lands and resources used for agricultural production.
Industry and Resources	Exploration and Geological Services Division	<p>Works toward the full and responsible development of the province's oil, natural gas and mineral resources.</p> <p>Issuance of mineral, oil and gas dispositions for exploration and development.</p> <p>Research, collection, organization and distribution of information on non-renewable resources, geoscience, exploration and production activity for the Province.</p>
Government Relations and Aboriginal Affairs	Municipal Relations Division	<p>Provides technical and advisory support to municipalities for community planning and governance.</p> <p>Administers the subdivision approval process and use of dedicated lands.</p> <p>Operates as the municipality for land and settlements in the Northern Saskatchewan Administration District located outside of incorporated municipalities with responsibility for assessment and taxation, administration (including staffing, payroll, supplies and equipment), public complaints and concerns and infrastructure development and operation.</p>
Culture, Youth and Recreation	Heritage	Administers <i>The Heritage Property Act</i> , which facilitates heritage resource management and development. Through the Archaeological Resource Management Program, developments are routinely reviewed for possible heritage concerns.
Sask Power	N/A	Develops and maintains power and transmission lines.
Tourism Saskatchewan	Product Development	Plans and develops tourism destination areas.
Saskatchewan Wetland Conservation Corporation	N/A	Manages wetlands and waterfowl habitat.

Department/Agency	Branch	Responsibility
Northern Affairs	Economic and Community Development	<p>Provides financial and business support services to northern entrepreneurs, businesses, co-operatives and other organizations. These services include the identification and evaluation of business opportunities, business plan development, financing through the Northern Development Fund and other sources, organizational development, management counseling, business skills training, and other advisory services.</p> <p>Programs administered by this Division include the <i>Northern Development Fund</i>, the <i>Commercial Fishing Freight Subsidy and Price Support Program</i>, and the annual <i>Northern Saskatchewan Business Opportunity Forum</i>.</p>
	Policy, Planning, and Research Division	<p>Undertakes research, planning and policy development that better enable northerners to identify and participate in northern development.</p>
	Resource and Industrial Development Division	<p>Addresses northern interests related to the development of northern resources and industries. This Division administers programs such as the following:</p> <p><i>Northern Mines Monitoring Secretariat and Environmental Quality Committees:</i> Provide information to communities on uranium mine site developments and activities; also, provide a forum to ensure the considerations of northerners in the way in which uranium mine development occurs in northern Saskatchewan.</p> <p><i>Mineral Surface Lease Agreements:</i> Negotiate, monitor and administrate Mine Surface Lease Agreements in northern Saskatchewan on behalf of provincial government departments. Surface leases contain Human Resource Development Agreements. Northern Affairs</p>

**Table A6-2**

**Federal Government Departments and Agencies  
Responsible for Land and Resource Management**

Department/Agency	Responsibility/Goals
Environment Canada	Preserve and enhance quality of the natural environment and renewable resources, including migratory birds, other non-domestic flora and fauna, and water; carry out meteorology; and coordinate federal environmental policies and programs.
Canadian Environmental Assessment Agency	Through administration of the Canadian Environmental Assessment Act, provide effective means of integrating environmental factors into federal planning and decision-making while taking into account public values and the goal of sustainable development.
Agriculture and Agrifood Canada	To promote and support a growing, competitive, market-oriented agriculture and agrifood industry, which achieves farm financial security, environmental sustainability, and a safe, high quality food supply.
Fisheries and Oceans	Develop and administer policies and programs in support of Canada's economic, ecological and scientific interests in oceans and freshwater fish habitat, for conservation and sustained utilization of Canada's fisheries resources in marine and inland waters, and for safe, effective and environmentally sound marine services responsive to the needs of Canadians.
Indian and Northern Affairs Canada	Meet the federal government's constitutional, political and legal responsibilities to First Nations and the North, including sustainable development of natural resources (e.g. mining, oil and gas, forestry and water).
National Round Table on the Environment and Economy	Identify, explain and promote, in all sectors of Canadian society and in all regions of Canada, principles and practices of sustainable development.
Natural Resources Canada	Provide expert scientific and economic knowledge to Canadians, and promote sustainable development and use of Canada's natural resources and competitiveness of the energy, forest, mining, geomatic and geoscience sectors.
Transport Canada	Ensure high standards for a safe transportation system, contribute to Canada's prosperity, and protect the physical environment by evaluating the impacts of policy and regulatory decisions on the environment and promoting and meeting environmental standards.

## Appendix 7

### PROVINCIAL AND FEDERAL GOVERNMENT LEGISLATION APPLICABLE TO LAND AND RESOURCE MANAGEMENT

#### **Provincial**

*The Clean Air Act and Regulations*  
*The Crown Minerals Act*  
*The Department of Energy & Mines Act*  
*The Department of Environment and Resource Management Act*  
*The Ecological Reserves Act*  
*The Environmental Assessment Act*  
*The Environmental Management and Protection Act*  
*The Fisheries Act*  
*The Forest Act and Regulations*  
*The Forest Resources Management Act*  
*The Heritage Property Act*  
*The Highway Traffic Act*  
*The Litter Control Act*  
*The Mineral Disposition Regulations, 1986*  
*The Mineral Industry Environmental Protection Regulations*  
*The Municipal Refuse Management Regulations*  
*The Natural Resources Act*  
*The Northern Affairs Act*  
*The Parks Act and Regulations*  
*The Prairie and Forest Fires Act, 1982.*  
*The Provincial Lands Act*  
*The Public Health Act*  
*The Rural Municipality Act*  
*The Resource Lands Regulations*  
*The Sand and Gravel Act*  
*The Surface Rights Acquisition and Compensation Act*  
*The Water Corporation Act*  
*The Water Pollution Control and Waterworks Regulations*  
*The Wildlife Act and Regulations*  
*The Wildlife Habitat Protection Act*

#### **Federal**

*The Canadian Environmental Protection Act*  
*The Canadian Environmental Assessment Act*  
*The Fisheries Act*  
*The Forestry Development and Research Act*  
*The Department of Indian Affairs and Northern Development Act*  
*The Migratory Birds Convention Act, 1994*  
*The Indian Act*  
*The Navigable Waters Protection Act*



## Appendix 8

### PROVINCIAL AND FEDERAL GOVERNMENT POLICIES AND GUIDELINES APPLICABLE TO LAND AND RESOURCE MANAGEMENT

#### LANDS

Cancellation and Non-Renewal of Dispositions on Crown Resource and Park Lands, Saskatchewan.

Foreshore and Shoreland Installations, Saskatchewan Environment.

Resource Land Dispositions, Saskatchewan Environment.

Sale of Crown Resource Land, Saskatchewan Environment.

Sign Corridors on Crown Land, Saskatchewan Environment.

Temporary Work Camps, Saskatchewan Environment.

Unauthorized Occupancy and Use of Crown Resources or Park Lands, Saskatchewan Environment.

Unauthorized Indian Hunting Cabins on Crown Resource Land and Park Land, Saskatchewan Environment.

Policy on Outfitting in Saskatchewan, Saskatchewan Environment. March 1997.

Guidelines for Environmental Protection During Development and Restoration of Sand and Gravel Pits, Saskatchewan Environment and Public Safety.

#### FISHERIES

Surface Exploration. Department Guidelines for the Mineral Exploration Industry.

Guidelines for the Use of Explosives in Canadian Fisheries Water. Department of Fisheries and Oceans, August, 1993.

Fish Habitat Protection Guidelines, Water Control Structures. Department of Fisheries and Oceans and Saskatchewan Environment.

Fish Habitat Protection Guidelines, Road Construction and Stream Crossings. Department of Fisheries and Oceans and Saskatchewan Environment

Fish Habitat Protection Guidelines, Sand and Gravel Pits. Department of Fisheries and Oceans and Saskatchewan Environment.

Freshwater Intake End-of-Pipe Fish Screen Guideline. Department of Fisheries and Oceans.

Fish Habitat Protection Guidelines, Recreational Developments. Department of Fisheries and Oceans and Saskatchewan Environment.

Fish Habitat Protection Guidelines, Overhead Powerlines. Department of Fisheries and Oceans and Saskatchewan Environment.

Fish Habitat Protection Guidelines, Irrigation Developments. Department of Fisheries and Oceans and Saskatchewan Environment.

Aquaculture, Saskatchewan Environment.

Lake Closure And License Suspensions For Commercial Net Fisheries, Saskatchewan Environment.

Allocation of Commercial Fisheries, Saskatchewan Environment.

Commercial Net Fishing License Eligibility Requirements, Saskatchewan Environment.

Fish Marketing, Saskatchewan Environment.

Commercial Net Fishery Gamefish Harvest, Saskatchewan Environment.

Licensing/inspecting Fish Processing Plants, Saskatchewan Environment.

Under-utilized Fish Species, Saskatchewan Environment.

Angling Baits And Bait Fish, Saskatchewan Environment.

Complimentary Fishing Privileges, Saskatchewan Environment.

Subsistence Fishing, Saskatchewan Environment.

Mercury and Triphenyltin in Fish, Saskatchewan Environment.

Fish Stocking, Saskatchewan Environment.

## **FORESTRY**

Fire and Forest Insect and Disease Management, Saskatchewan Environment.

Timber Management, Saskatchewan Environment.

Forest Harvesting in Saskatchewan Provincial Parks, Saskatchewan Environment.

Spruce Bud Worm in Lac La Ronge Provincial Park, Saskatchewan Environment.

Saskatchewan Long-Term Integrated Forest Resources Management Plan, Saskatchewan Environment.

Policy Framework Agreement, Saskatchewan Environment.

## **WILDLIFE**

Fish and Wildlife Policy Framework, Saskatchewan Environment.

Problem Wildlife, Saskatchewan Environment.

Big Game Damage Compensation, Saskatchewan Environment.

Big Game Unfit for Human Consumption, Saskatchewan Environment.

Hunting And Fishing, Saskatchewan Environment.

Disabled Hunters - Special Permits, Saskatchewan Environment.

Whooping Crane Protection - Sandhill Crane Season, Saskatchewan Environment.

Subsistence Hunting, Saskatchewan Environment.

Injured or Orphaned Wildlife, Saskatchewan Environment.

Waterfowl Crop Damage Prevention, Saskatchewan Environment.

Captive Wildlife, Saskatchewan Environment.

Falconry, Saskatchewan Environment.

Sale of Wildlife, Saskatchewan Environment.

Retaining Dead Wildlife Under Permit, Saskatchewan Environment.

Import or Export of Wildlife Under Permit, Saskatchewan Environment.

Dispositions of Wild Meat/Permits to Serve Wild Meat, Saskatchewan Environment.

## **ABORIGINAL**

Aboriginal Consultation Guidelines, Saskatchewan Environment.

SE Aboriginal Affairs Policy Framework, Saskatchewan Environment.

## **FOREST FIRE MANAGEMENT**

Are You at Risk from Wildfire? Saskatchewan Environment.

A Guide to Responsible Burning, Saskatchewan Environment.

Prescribed Burning, Saskatchewan Environment.



## Appendix 9

### GENERAL LAND USE PLANNING PROCESS

There are several basic stages or steps to land use planning. These steps can be summarized as the following: (1) initiating the plan; (2) developing the plan; (3) finalizing the plan; (4) implementing the plan; and (5) monitoring the plan.

#### **(1) Initiating the Plan**

##### (a) Preliminary Issue Analysis and Area Selection

Government reflects internally and strategically on Crown land management issues and resultant planning priorities and gains support through consultation. Priority planning area boundaries are proposed (e.g., ecosystems) that will later be confirmed or refined as the process proceeds.

##### (b) Initiate Formal Public Involvement

Users are contacted and invited to participate on local and/or regional advisory boards. Terms of reference are developed for decision-making with users. These terms of reference must also document how decisions will be made (e.g., consensus or majority vote), as well as, outline how the board(s) will resolve conflicts and interact with the media. Issues and concerns of the public, interest groups, and government agencies are collectively identified.

#### **(2) Developing the Plan**

##### Collecting, Sharing, and Analyzing Information

Technical staff (e.g., staff of government, industry, and non-government organizations) assemble information on land uses, resources and inherent capabilities of the area, respecting both scientific data and local knowledge. Some focused field work may be necessary to fill critical data gaps. All information is shared with participating users, in order to examine the issues and concerns, and to identify opportunities and options. Analysis (e.g., cost-benefit analysis) of potential options may be undertaken. Information is also shared on an ongoing basis with the general public.

#### **(3) Finalizing the Plan**

##### Formulating and Approving a Plan

General discussion and negotiation leads to the narrowing of a plan of action. Technical staff draft plan. Failure to reach consensus requires more negotiation and innovation. Plan is redrafted if necessary. Plan supported by consensus of users and government, then submitted to general public. If favorably received by general public, plan goes to

provincial government for formal approval. If no consensus possible, alternative scenarios must be presented for government decision.

#### **(4) Implementing the Plan**

The plan can be put into action with the help of planning commissions, partnerships, co-management agreements, or other formal agreements, which provide a vehicle for meaningful participation of local people and resource managers. A formal review process will be part of the implementation strategy. Mechanisms for resolutions of conflicts are also important.

#### **(5) Monitoring the Plan**

Plan implementation is monitored by SE or other designated agents to ensure progress. Principle of flexible management should prevail. Effective monitoring can provide early information that leads to changes or amendments to the plan. There will be a willingness to co-operatively amend the plan from time to time to allow for new circumstances, knowledge, objectives, and other factors.

**Appendix 10**

**LA RONGE  
INTEGRATED  
LAND USE MANAGEMENT PLAN**

**Terms of Reference**

**For The**

**Local Advisory Board**

**March 19, 1998**

# LA RONGE INTEGRATED LAND USE MANAGEMENT PLAN

## Terms of Reference For The Local Advisory Board (March 19, 1998)

### **Mission Statement:**

The Local Advisory Board members will work cooperatively to provide accurate information, describe issues or concerns for our area and recommend solutions for implementation in the Plan.

### **Goal:**

The Local Advisory Board will participate in the development and implementation of a land use plan that will manage the use of land and of renewable and non-renewable resources of the planning area in an integrated and environmentally sound manner to ensure ecological, economic and social benefits for present and future generations.

### **Principles For Land Use Planning:**

The Local Advisory Board will follow these principles in the development of a land use plan:

1. Seek to maintain the health of the area's ecosystems by making sure that:
  - renewable resource uses are sustainable;
  - non-renewable resource uses are environmentally sound;
  - biological diversity is maintained; and
  - negative effects from all uses are minimized.
2. Promote the needs and wishes of the people and communities living in and adjacent to the planning area and, in general, the people of Saskatchewan.
3. To respect the rights of Aboriginal people and all stakeholders.
4. To consider all values when making management decisions. Values may include, but are not limited to, ecological, social, economic, cultural, and spiritual.
5. To support land and resource uses that are sustainable environmentally, economically, and socially.
6. To recognize and be consistent with current legislation and policies, and recommend changes where appropriate.
7. To be flexible to adapt, when required, to new circumstances and information.

### **Objectives of Land Use Planning:**

The Local Advisory Board will aim to meet the following objectives in the development of a land use plan:

1. To apply the principles of integrated resource management to all resource management activities in the planning area.
2. To develop clear land use guidelines that allow for controlled, orderly development. These guidelines will specify:
  - what uses are allowed;
  - where these uses are allowed; and
  - development limits.
3. To promote the integration of planning processes between the existing jurisdictions in and adjacent to the planning area.
4. To develop a mechanism to resolve conflicts among users. User education, negotiation, and separation of incompatible land uses are some options to be considered.
5. To provide guidelines for public input into land use planning decisions.
6. To develop standards to review and evaluate existing and future land uses.
7. To identify ecologically representative or unique species and important cultural, heritage, and recreational sites.
8. To set down procedures and develop mechanisms to implement, evaluate, and revise the land use plan from time to time.

### **Structure and Membership of the Local Advisory Board:**

- C The members of the Local Advisory Board will consist of the following:
  - community representatives of interest groups and major stakeholders;
  - representatives of the Lac La Ronge Indian Band, the Village of Air Ronge, and the Town of La Ronge; and
  - representatives of various provincial government agencies.
- C The Local Advisory Board will have a Planning Secretariat that will consist of the local and provincial government representatives who sit on the Board. Other Board members are welcome to sit on this Secretariat if they are willing to participate in the tasks of this subcommittee.
- C The Local Advisory Board should have adequate representation of the groups that would be affected by the implementation of the guidelines of the final land use plan.
- C

Members may be asked to demonstrate that they represent a community group.

- C The chairperson(s) will be selected by the Local Advisory Board members.
- C A provincial government staff member will act as a facilitator, when required.

**Role of Local Advisory Board Members:**

- C Members will communicate the interests and concerns of the community groups that they have agreed to represent.
- C Members will attend Board meetings. An alternate is welcome to attend meetings, but only one representative will speak for an organization. Alternates will be kept informed so that they can stand in for the designated representative when required.
- C Members will be responsible for keeping their groups informed about the progress of this project.
- C Members will assist in initiating and maintaining public participation in this project.

**Role of the Planning Secretariat:**

- C The Planning Secretariat will be responsible for the writing of the actual land use management plan for the La Ronge area.
- C Members of the Planning Secretariat will assist the co-chairs in the preparation of meeting materials (e.g., agendas and minutes) and the taking of meeting minutes.

**Role of the Co-Chairs:**

- C The co-chairs will be responsible for ensuring that:
  - meeting minutes are taken and distributed to all Board members;
  - future meetings are scheduled and agendas are distributed prior to these meetings; and
  - meetings are conducted in an orderly fashion, according to the agenda.

**Role of the Facilitator:**

- C The facilitator will lead those discussions in which the co-chairs should take part.
- C The facilitator must be neutral. As such, the facilitator must not express his or her opinions during the meeting discussions.

**Consensus Building:**

- C Decisions will be based on consensus (i.e., all members can live with the decision).
- C Those parties directly affected by a decision must be given the opportunity to be at the table to participate in the consensus process when that decision item is being discussed.
- C Members will respect the ideas and concerns of others.
- C Discussions will focus on interests and concerns rather than positions and demands.
- C Everyone will have an opportunity to speak. There will be no cross talking (i.e., only one person should be speaking at a time).
- C Members will try to understand the interests of others, whether they agree with them or not.
- C Members will commit to fully explore issues, searching for solutions in a problem-solving and consensus-building atmosphere.
- C Members will communicate the interests of the group that they represent. If there is uncertainty as to whether that is the case, members will make that known.
- C Any member may abstain from a decision to avoid preventing consensus. Minutes will note these occasions.

**In the Event of Disagreement:**

- C Participants who do not agree will provide reasons why their interests are not accommodated by the general consensus of the group. Individual concerns will be noted in the minutes.
- C Non-consensus items can be tabled.
- C The provincial government will look at all concerns, including issues where consensus was not reached, when it reviews the draft plan.
- C If the provincial government does not follow the advice of the Local Advisory Board, the rationale for the Province's decision will be provided to the Board.

**Observers At Meetings:**

- C Observers are welcome, but must be prearranged with a Board member.
- C The general public will be allowed to attend meetings, with the approval of all Board members present.

I

**Involvement of Others At Meetings:**

- C Any involvement of people outside of the Local Advisory Board and the Planning Secretariat, as technical advisors or otherwise, is welcome provided that participation by these individuals is at the discretion of the Board.
- C The Board members may request the views of groups not represented on the Local Advisory Board and the Planning Secretariat, as required.

**Media At Meetings and General Contact:**

- C Meetings will be closed to the media, unless specifically invited and agreed to by all Board Members present.
- C Press releases for the Board will be proofed and approved by the Board.
- C Statements to the media by individual Board members may express individual concerns or the concerns of the group represented by that member. Members will not identify positions or suggestions of other Board members in their discussions with the public or the media.
- C A media contact will be selected by the Local Advisory Board. Board members will work with each other to ensure that material is presented to through various media in Cree, Dene, and English languages.

**Appendix 11**

**LETTER FROM**

**Rick Kolstad and Deb Peters**

Dated April 4, 2001

**Rick Kolstad and Deb Peters**  
**P.O. Box 274**  
**Air Rouge, Saskatchewan S0J 1L0**

4 April 2001

La Range Corridor Land-Use Planning Committee  
c/o Saskatchewan Environment and Resource Management  
Box 5000  
La Ronge, Sask.  
S0J 1L0

Attention : Chair Person

Dear Sir:

We have reservations about having our name on a document that allows industrial clear-cut logging in the north. These reservations could be mediated with the inclusion in the final report of the following points:

- the devastation caused by this method is well documented both around the world and in our province.
- The NSR (not sufficiently restocked) rate in Saskatchewan stands at 66%. This performance is extremely poor and is far and above the highest in the country. Past performance records in the less-sensitive areas south of the Pre-Cambrian Shield have been poor. To expect forest regeneration to improve in the thinner soil, harsher climate, and more delicate riparian zones of the La Ronge area is unrealistic.
- The exploration of alternatives to industrial clear-cut logging must be part of any sustainable forestry practice. In the spirit of compromise we have brought to this Committee the names and views of two men well versed in the field of alternative forestry. To no avail.
- Instead the status quo continues and the whole notion of sustainability is seriously compromised. Along with the forest, we put at risk all other forest uses and the jobs flowing from them: tourism, commercial fishing, rice harvesting, trapping, and alternate forestry uses.

Future generations will NOT thank us for the job we have done as custodians of the land.

Yours truly,

Rick Kolstad

Deb Peters



## Appendix 12

### LA RONGE LOCAL ADVISORY BOARD MEETING DATES

C November 5, 1997- Royal Canadian Legion, La Ronge  
C December 4, 1997- La Ronge Motor Inn, La Ronge  
C January 14, 1998 - La Ronge Motor Inn, La Ronge  
C February 10, 1998 - Royal Canadian Legion, La Ronge  
C March 19, 1998 - Royal Canadian Legion, La Ronge  
C April 21, 1998 - Royal Canadian Legion, La Ronge  
C April 29, 1998 - Royal Canadian Legion, La Ronge (Public Meeting)  
C May 14, 1998 - Royal Canadian Legion, La Ronge  
C June 9, 1998 - Royal Canadian Legion, La Ronge  
C June 23, 1998 - Royal Canadian Legion, La Ronge  
C August 21 and 22, 1998 - Lac La Ronge Indian Band Office, La Ronge  
C September 17, 1998 - Lac La Ronge Indian Band Office, La Ronge  
C October 15, 1998 - Lac La Ronge Indian Band Office, La Ronge  
C November 19, 1998 - Royal Canadian Legion, La Ronge  
C December 10, 1998 - Royal Canadian Legion, La Ronge  
C January 21, 1999 - Royal Canadian Legion, La Ronge  
C February 25, 1999 - Royal Canadian Legion, La Ronge  
C March 20, 1999 - Royal Canadian Legion, La Ronge  
C April 26, 1999 - Royal Canadian Legion, La Ronge  
C May 19, 1999 - Royal Canadian Legion, La Ronge  
C June 11, 1999 - Royal Canadian Legion, La Ronge  
C September 22, 1999 - Royal Canadian Legion, La Ronge  
C December 1, 1999 - Royal Canadian Legion, La Ronge  
C January 19, 2000 - Royal Canadian Legion, La Ronge  
C March 15, 2000 - Royal Canadian Legion, La Ronge  
C April 15, 2000 - Royal Canadian Legion, La Ronge  
C May 31, 2000 - Royal Canadian Legion, La Ronge  
C February 19, 2001- La Ronge Motor Inn, La Ronge  
C August 2, 2001- La Ronge Motor Inn, La Ronge



## Appendix 13

### NEWSPAPER ARTICLES — THE LA RONGE NORTHERNER

Table A13-1

ARTICLE TITLE	DATE OF PUBLICATION
Land Use Planners Open up	March 3, 1999
Land Use Plan Takes Long, Winding Road	March 3, 1999
Who's Who in Land Use	March 3, 1999
What's the Big Deal about Gravel?	April 20, 1999
Fun for Who? (Planners Recommend Permit System for Northern Trails	May 4, 1999
Forest Harvesting Not Always a Cut above	June 22, 1999
Logger's Neighbors must Learn to Live Together	June 29, 1999
Who Will Put Back the Trees?	July 6, 1999
If You Build It, They May Complain	July 20, 1999
Save Our Air — and Our Water Too	July 27, 1999
North must Work Around the Need for Mines	August 4, 1999
Nice Place to Live, but Would You Want to Visit There	August 10, 1999
Protect Traditional Resources from Being Trampled	August 17, 1999
Once the Land Use Plan Is Done, How Will it Really Work?	August 31, 1999
Land Use Plan to Be Revised	September 28, 1999
Land Use Plan Tweaked a Second Time	December 21, 1999