

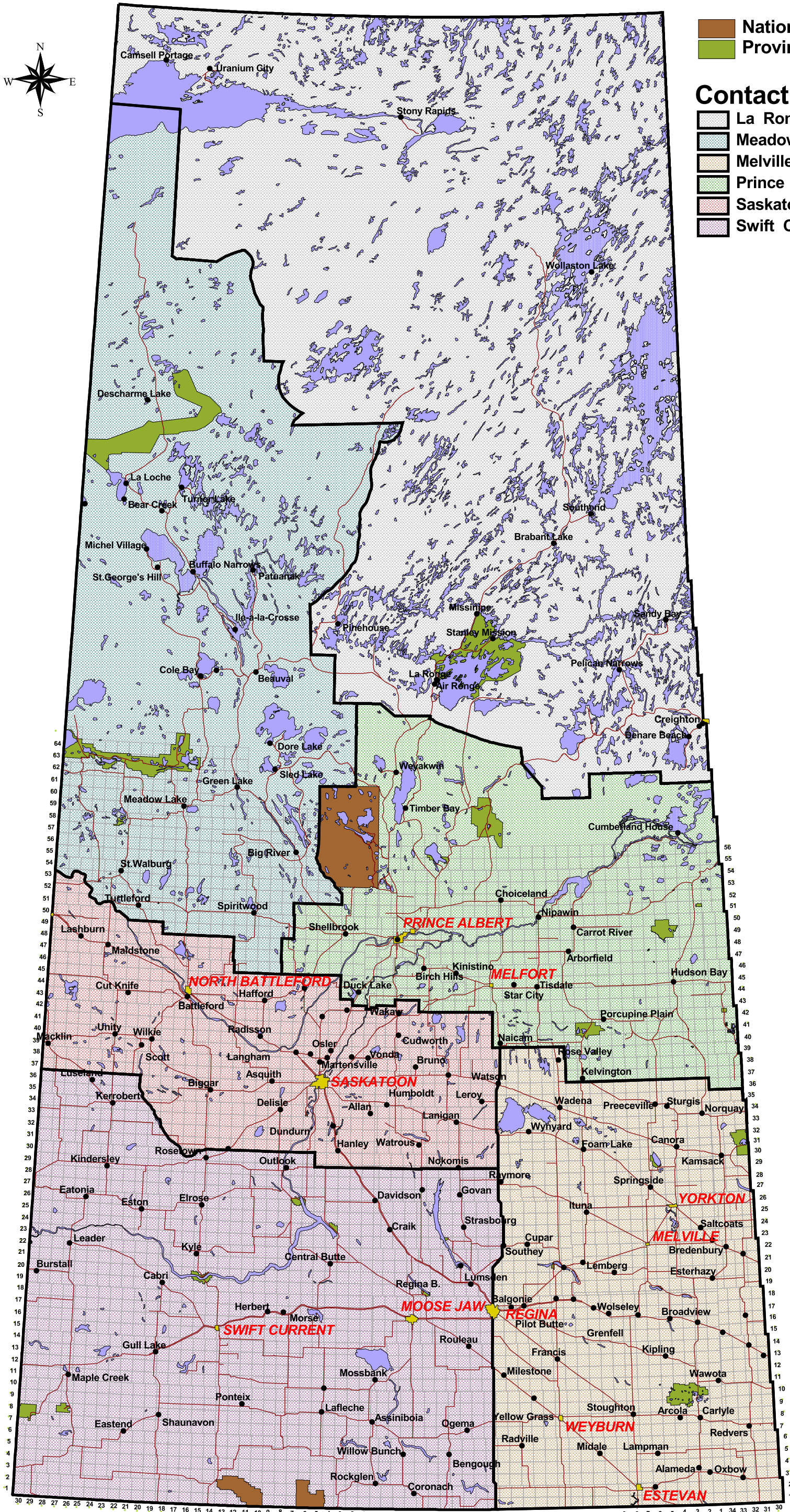
# Saskatchewan Ministry of Environment, Land Protection Section



- National Park
- Provincial Park

## Contact Information

- La Ronge 306-953-2423
- Meadow Lake 306-236-7553
- Melville 306-728-7494
- Prince Albert 306-953-2400
- Saskatoon 306-933-6532
- Swift Current 306-778-8260



**Saskatchewan  
Ministry of  
Environment**

Created by: Ryan Mulligan  
 Date: February 19, 2008  
 Revised: April 24, 2008  
 Revised: July 10, 2008  
 Revised: January 12, 2011  
 D:\projects\exploration\_admin\_mapapr.apr