

NOTICE OF REOPENING
of lands previously disposed as mineral dispositions

Reopenings will take place at 10:00 AM Central Standard Time
on September 05, September 12, September 19 and September 26, 2024.

See below the map and list of lands to be reopened.

Shortly after a reopening, the lands previously disposed as mineral dispositions to be part
of the next reopening will be posted on the MARS Reopening Board,
and will be rendered on the MARS Mineral Disposition Map in turquoise hatch.

<https://mars.isc.ca/MARSWeb/publicmap/ReopeningBoard.aspx>

For Further Information, please contact MARS Help Desk by phone at
306.787.9030 or by email at MARS@gov.sk.ca.

Reopening Date: Thursday, September 05, 2024

MC00001446	MC00015111	MC00015195	MC00015235	MC00015501
MC00010548	MC00015112	MC00015196	MC00015237	MC00015707
MC00015099	MC00015113	MC00015197	MC00015240	MC00015708
MC00015100	MC00015114	MC00015198	MC00015245	MC00015709
MC00015101	MC00015115	MC00015199	MC00015247	MC00015710
MC00015102	MC00015116	MC00015215	MC00015255	MC00015711
MC00015103	MC00015118	MC00015216	MC00015423	MC00015712
MC00015104	MC00015119	MC00015217	MC00015424	MC00015738
MC00015105	MC00015120	MC00015219	MC00015483	MC00015739
MC00015106	MC00015121	MC00015221	MC00015484	MC00015797
MC00015107	MC00015122	MC00015225	MC00015485	MC00015861
MC00015108	MC00015144	MC00015226	MC00015486	
MC00015109	MC00015173	MC00015228	MC00015487	
MC00015110	MC00015194	MC00015234	MC00015500	

Reopening Date: Thursday, September 12, 2024

MC00013283	MC00014789	MC00015252	MC00015691	MC00015800
MC00013285	MC00015117	MC00015256	MC00015692	MC00015801
MC00013299	MC00015176	MC00015366	MC00015693	MC00015841
MC00013300	MC00015177	MC00015367	MC00015700	MC00015842
MC00013422	MC00015178	MC00015368	MC00015751	MC00015843
MC00013423	MC00015179	MC00015369	MC00015752	MC00015844
MC00013424	MC00015182	MC00015475	MC00015753	MC00015877
MC00013433	MC00015184	MC00015476	MC00015754	MC00015878
MC00013563	MC00015185	MC00015477	MC00015755	MC00016217
MC00013610	MC00015189	MC00015478	MC00015756	MC00018806
MC00013746	MC00015200	MC00015479	MC00015758	MC00018808
MC00014442	MC00015201	MC00015480	MC00015759	
MC00014726	MC00015202	MC00015489	MC00015760	
MC00014731	MC00015205	MC00015502	MC00015795	
MC00014788	MC00015250	MC00015503	MC00015796	

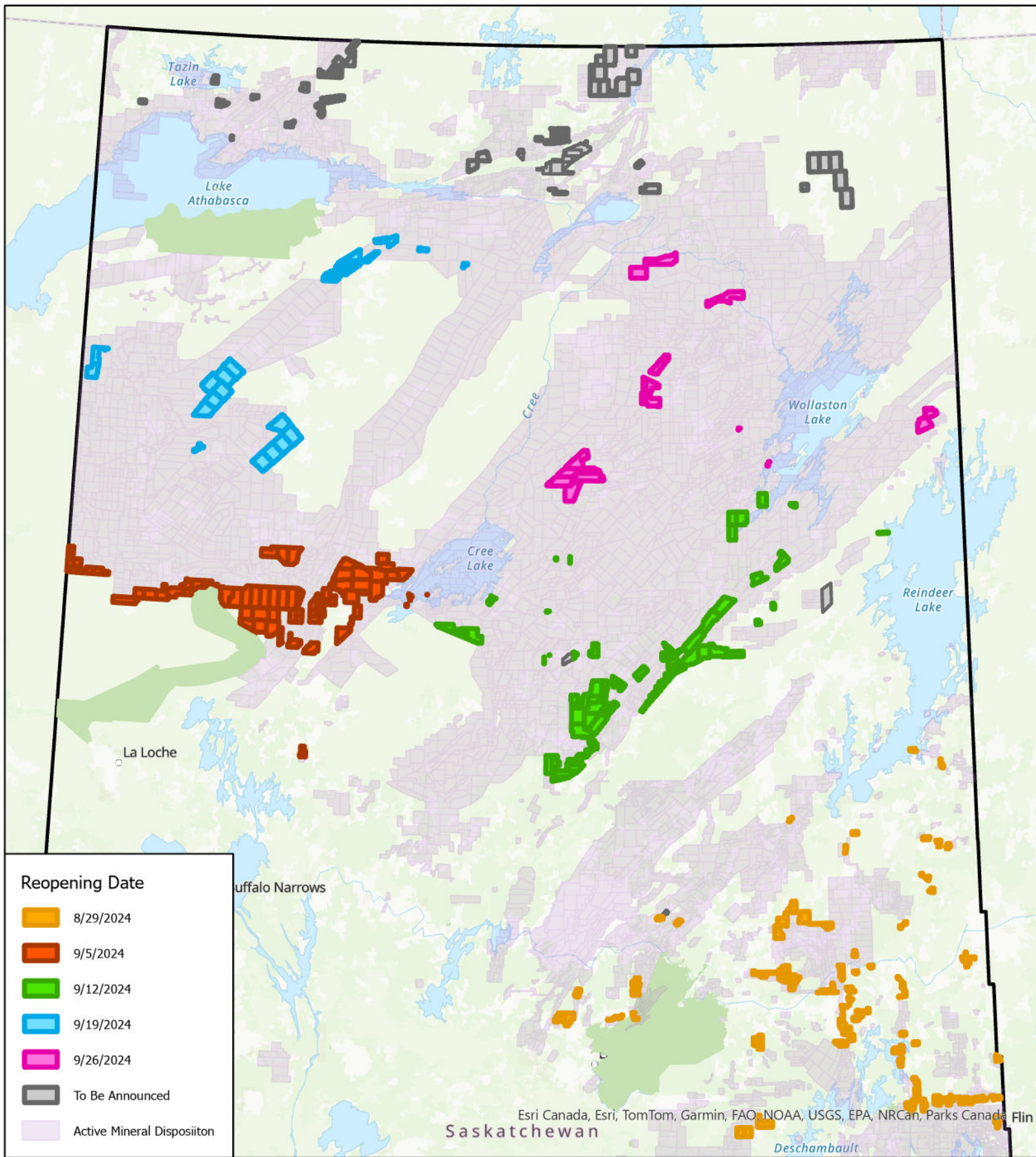
Reopening Date: Thursday, September 19, 2024

MC00010307	MC00015678	MC00015684	MC00015690	MC00015815
MC00015673	MC00015679	MC00015685	MC00015713	MC00015816
MC00015674	MC00015680	MC00015686	MC00015714	
MC00015675	MC00015681	MC00015687	MC00015715	
MC00015676	MC00015682	MC00015688	MC00015716	
MC00015677	MC00015683	MC00015689	MC00015750	

Reopening Date: Thursday, September 26, 2024

MC00015574	MC00015601	MC00015694	MC00015699	MC00015705
MC00015575	MC00015602	MC00015695	MC00015701	MC00015706
MC00015577	MC00015603	MC00015696	MC00015702	
MC00015578	MC00015604	MC00015697	MC00015703	
MC00015597	MC00015649	MC00015698	MC00015704	

Reopening Dates for Lapsed Mineral Claims



0 50 100
Kilometers
Coordinate System: NAD 1983 CSRS UTM Zone 13N



Date: Aug 20, 2024
Lands and Mineral Tenure, Ministry of Energy and Resources

Disclaimer: Although the Ministry of Energy and Resources has exercised all reasonable care in the compilation, interpretation, and production of this item, it is not possible to ensure total accuracy, and all persons who rely on the information contained herein do so at their own risk. The Ministry of Energy and Resources and the Government of Saskatchewan do not accept liability for any errors, omissions, or inaccuracies that may be included in or derived from this item.

NOT FOR REPRODUCTION OR DISTRIBUTION WITHOUT WRITTEN CONSENT OF THE MINISTRY.