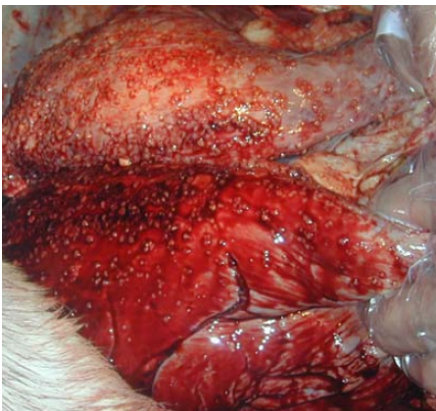


Attention Taxidermists and Processors

The Government of Saskatchewan is asking for your help in identifying animals potentially infected with Bovine Tuberculosis.

What is Bovine Tuberculosis?

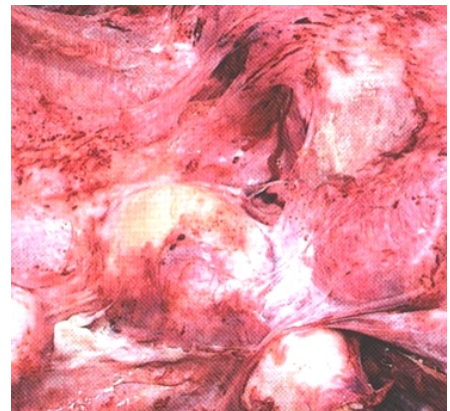
Bovine TB is chronic progressive bacterial disease that primarily affects cattle. It was detected in a cattle herd in Saskatchewan in 2023. It has never been detected in Saskatchewan wildlife, but deer, elk, and moose are susceptible. Bovine Tb can cause abscesses to form on the surface of the lungs and chest cavity, as well as the lymph nodes.



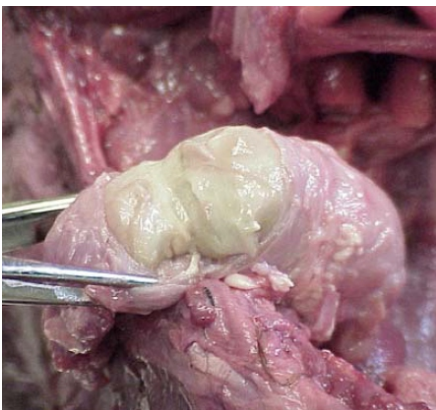
Lung lobes with pearl-like abscesses on the surface



Pearl-like nodules on the ribcage



Lung abscesses (pus-filled)



When cut, lymph nodes may contain pus-filled nodules

If you see any suspect lesions, contact the Ministry of Environment at 1-800-567-4224 or the Canadian Wildlife Health Cooperative at 306-966-5815.

For more information, visit [Saskatchewan.ca/bovinetb](https://saskatchewan.ca/bovinetb)