



# Priority Invasive and Migratory Insects to Report PRAIRIE REGION



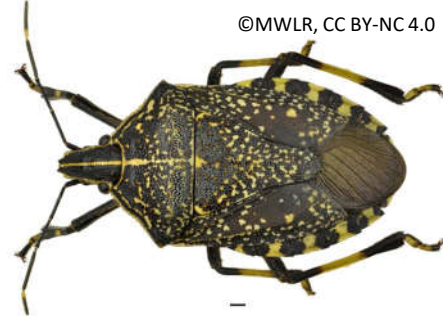
Insects to watch for and report by anyone interacting with insects. Use the QR CODE to report all observations, including species **regulated by the Canadian Food Inspection Agency (CFIA)**.



Lawrence Barringer, Pennsylvania Dept. of Agriculture, bugwood.org

Bryan Brunet, AAFC

**Spotted lanternfly, *Lycorma delicatula***  
Hosts: Tree of heaven, grapevine, various (fruit) trees and shrubs  
**Not present in Canada**  
**CFIA REGULATED**



©MWLR, CC BY-NC 4.0

**Yellow-spotted stink bug, *Erthesina fullo***  
Hosts: Fruits, vegetables, and ornamental plants  
**Not present in Canada**



Susan Ellis, bugwood.org

**Brown marmorated stink bug, *Halyomorpha halys***  
Hosts: Fruits, vegetables, ornamental plants  
**Not present in AB, SK, MB**



Adam Sisson, University of Iowa, bugwood.org

**Western bean cutworm, *Striacosta albicosta***  
Hosts: Dry beans, corn, soybean (less preferred)  
**Not present/established in AB, SK, MB**



Karla Salp, Washington State Department of Agriculture, bugwood.org

**Spongy moth, *Lymantria dispar***  
Hosts: Oak, maple, beech, willow, apple, plum  
**Not present/established in AB, SK, MB**  
**CFIA REGULATED**



Russ Ottens, bugwood.org



Mark Dreiling, bugwood.org

**Fall armyworm, *Spodoptera frugiperda***  
Hosts: Corn, cereals, forages  
**Migrant into western Canada**



# Priority Invasive and Migratory Insects to Report PRAIRIE REGION



Insects to watch for and report by anyone interacting with insects. Use the QR CODE to report all observations, including species **regulated by the Canadian Food Inspection Agency (CFIA)**.



Klaus Bolte

## Asian long-horned beetle, *Anoplophora glabripennis*

Hosts: deciduous trees

Not present in Canada / **CFIA REGULATED**



William Fountain, University of Kentucky, bugwood.org

USDA ARS photo unit, bugwood.org

## Japanese beetle, *Popillia japonica*

Hosts: Turf, fruits, vegetables, ornamentals

Not present in AB, SK, MB

**CFIA REGULATED**



@Natural Resources Canada

## Emerald ash borer, *Agrilus planipennis*

Hosts: Ash species

Not present in AB, SK, detected in MB

**CFIA REGULATED**



Olivia Dorn, AAFC-Charlottetown

Laboratoire d'expertise et de diagnostic en phytoprotection - MAPAQ

## Pollen beetle, *Brassicogethes viridescens*

Hosts: canola and related plants

Not present in AB, SK, MB



Karla Salp, WSDA, bugwood.org

## Northern giant hornet, *Vespa mandarinia*

Threat to native bees and honeybee hives

Aggressive with painful sting

Not present in Canada



Allison Morris, bugwood.org

## European cherry fruit fly, *Rhagoletis cerasi*

Hosts: Cherry varieties and wild honeysuckle

Not present in AB, SK, MB / **CFIA REGULATED**