

Saskatchewan Quarterly Population Report

Fourth Quarter 2021

TOTAL POPULATION

Saskatchewan's population was estimated to be 1,183,269 as of January 1, 2022, according to Statistics Canada. This is an increase of 2,402 persons since October 1, 2021, and an increase of 4,298 persons from January 1, 2021. The fourth quarter (October 1 – December 31) saw Saskatchewan's population increase by 0.20 per cent, the eighth highest among the ten provinces.

Table 1 shows the quarterly population estimates and growth rates for Saskatchewan, Manitoba, and Alberta over the past two years.

Table 1: Quarterly Population and Growth Rates
January 1, 2020 - January 1, 2022

Date	Alberta		Saskatchewan		Manitoba	
	Population	Growth Rate	Population	Growth Rate	Population	Growth Rate
Jan-20	4,401,180	0.37%	1,179,355	0.25%	1,377,578	0.25%
Apr-20	4,415,700	0.33%	1,179,939	0.05%	1,379,735	0.16%
Jul-20	4,420,029	0.10%	1,179,300	-0.05%	1,380,648	0.07%
Oct-20	4,424,557	0.10%	1,178,164	-0.10%	1,380,447	-0.01%
Jan-21	4,431,454	0.16%	1,178,971	0.07%	1,381,459	0.07%
Apr-21	4,438,772	0.17%	1,180,314	0.11%	1,383,638	0.16%
Jul-21	4,442,879	0.09%	1,179,844	-0.04%	1,383,765	0.01%
Oct-21	4,464,170	0.48%	1,180,867	0.09%	1,386,333	0.19%
Jan-22	4,480,486	0.37%	1,183,269	0.20%	1,390,249	0.28%

Source: Statistics Canada

Saskatchewan's annual population growth rate (0.36%) was the least high among the provinces. Prince Edward Island and Nova Scotia had the largest annual growth rates among the provinces. Table 2 shows the January 1, 2022 population estimates for all provinces and territories along with their quarterly and annual growth rates.

Table 2: Population and Growth Rates of Provinces and Territories - January 1, 2022

	BC	AB	SK	MB	ON	QC	NB	NS	NL	PE	YT	NT	NU
Population	5,264,485	4,480,486	1,183,269	1,390,249	14,951,825	8,639,642	797,102	1,002,586	522,453	166,331	42,982	45,640	39,710
Annual Growth Rate	1.95%	1.11%	0.36%	0.64%	1.30%	0.70%	1.65%	2.10%	0.54%	2.98%	1.51%	0.70%	1.16%
Quarterly Growth Rate	0.28%	0.37%	0.20%	0.28%	0.25%	0.10%	0.35%	0.38%	0.13%	0.24%	-0.26%	0.27%	0.31%

Source: Statistics Canada

NATURAL INCREASE

Saskatchewan had 3,261 births and 2,763 deaths during the fourth quarter of 2021 producing a natural increase of 498. The natural increase in the same period last year was 507.

MIGRATION

Preliminary data suggests that in the fourth quarter of 2021, 2,690 Canadian residents moved to Saskatchewan as 4,072 Canadian residents left the province for a net interprovincial loss of 1,382 persons. In the fourth quarter of 2020, Saskatchewan had a net interprovincial migration loss of 1,367 persons.

Alberta was the primary source of Saskatchewan's interprovincial migration movement (44.24 per cent of in-migration and 42.49 per cent of out-migration).

Table 3 provides origin and destination flows of interprovincial migrants for the October 1 of 2021 to December 31 of 2021 period.

Net international migration added 3,286 people to Saskatchewan in the fourth quarter of 2021. This is down from 3,514 people in the third quarter of 2021. In the fourth quarter of 2020, net international migration was 1,667.

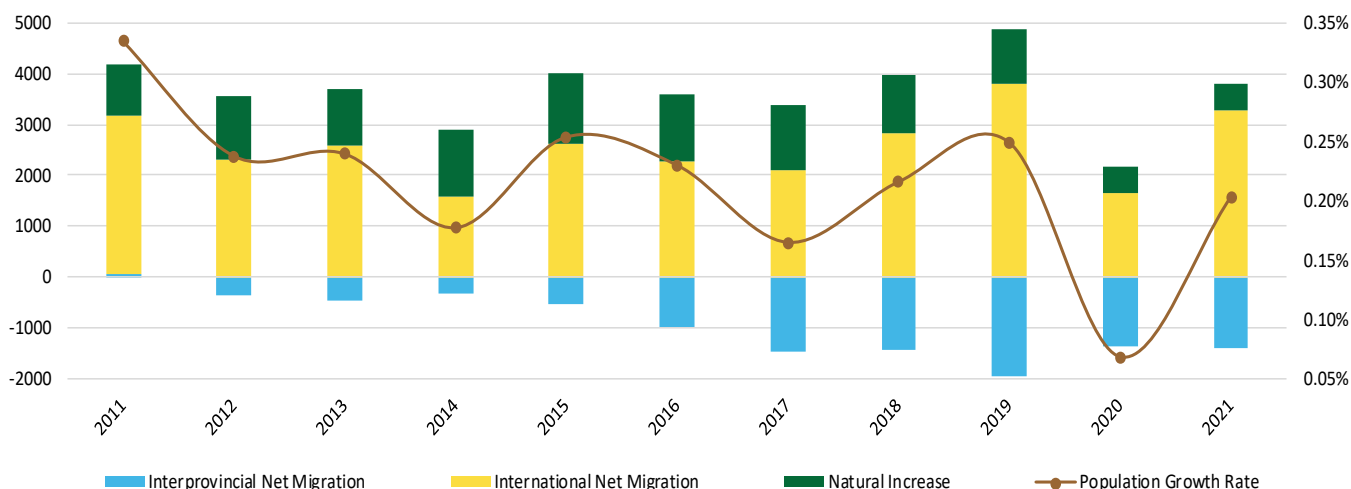
Figure 1 shows the Saskatchewan components of population change and growth rates in the fourth quarter.

All data in this report are preliminary and subject to revision. For more details, contact the Saskatchewan Bureau of Statistics at (306) 787-6330 or visit: <https://www.saskatchewan.ca/stats>

Saskatchewan Quarterly Population Report

Fourth Quarter 2021

Figure 1: Saskatchewan Components of Population Change 4th Quarter (October 1 – December 31)



page

Table 3: Origin and Destination of Interprovincial Migrants - October 1, 2021 to December 31, 2021

Origin	Destination												
	BC	AB	SK	MB	ON	QC	NB	NS	NL	PE	YT	NT	NU
BC	0	4,475	502	333	2,237	431	181	391	146	0	62	29	0
AB	4,920	0	1,190	292	2,583	394	413	579	225	98	35	102	32
SK	944	1,730	0	252	893	75	72	73	12	14	0	3	4
MB	1,082	1,131	308	0	1,303	161	71	147	0	4	0	4	4
ON	3,693	5,201	526	602	0	3,076	1,777	2,541	689	548	57	49	99
QC	770	494	51	60	3,210	0	331	123	32	57	0	10	21
NB	131	344	19	4	455	338	0	237	57	135	0	0	0
NS	249	413	46	8	750	158	354	0	174	83	9	36	14
NL	31	185	0	0	369	24	79	122	0	5	0	0	14
PE	119	92	0	0	303	16	13	119	26	0	0	0	14
YT	124	97	4	5	78	0	4	8	6	0	0	24	0
NT	12	128	23	7	30	17	13	4	33	0	4	0	0
NU	45	24	21	11	51	15	0	7	0	6	10	18	0

	BC	AB	SK	MB	ON	QC	NB	NS	NL	PE	YT	NT	NU
In	12,120	14,314	2,690	1,574	12,262	4,705	3,308	4,351	1,400	950	177	275	202
Out	8,787	10,863	4,072	4,215	18,858	5,159	1,720	2,294	829	702	350	271	208
Net	3,333	3,451	-1,382	-2,641	-6,596	-454	1,588	2,057	571	248	-173	4	-6
Rate ¹	0.06%	0.08%	-0.12%	-0.19%	-0.04%	-0.01%	0.20%	0.21%	0.11%	0.15%	-0.40%	0.01%	-0.02%

Source: Statistics Canada

¹ Net Migration Rate is quarterly net interprovincial migration expressed as a percentage of provincial population at the start of the quarter.