

# Contents

- IPIP Phase 2 Spatial Map Overview ..... 2
- Introduction to Spatial map Screens..... 2
  - Map Screen – Home page of the Spatial Map ..... 2
  - Map Toolbar ..... 3
  - Query Builder Panel ..... 5
  - Query Results Panel ..... 6
  - Action Links Flyout ..... 8
- Additional Functions ..... 9
- Frequently Asked questions..... 10
  - 1. How do I search for a Licence / Segment in the map? ..... 10
  - 2. Why can't I find my Segment / Licence in the Spatial map?..... 10
  - 3. Why can't I find my newly approved Licence on the map? ..... 10
  - 4. How do I search for a Segment / Licence with multiple conditions? ..... 11
  - 5. How can I look at the attributes for a feature on the map? ..... 11
  - 6. What actions can I perform on my Segment from the map? ..... 11
  - 7. Can I initiate a new Licence application from the map?..... 11
  - 9. When I make edits to a Segment when will they appear on the map? ..... 12
  - 10. Can I display only my BA's pipelines? ..... 12
  - 11. Can you print directly from the map?..... 12
  - 12. Can the resulting search segments/Licence be exported? ..... 12

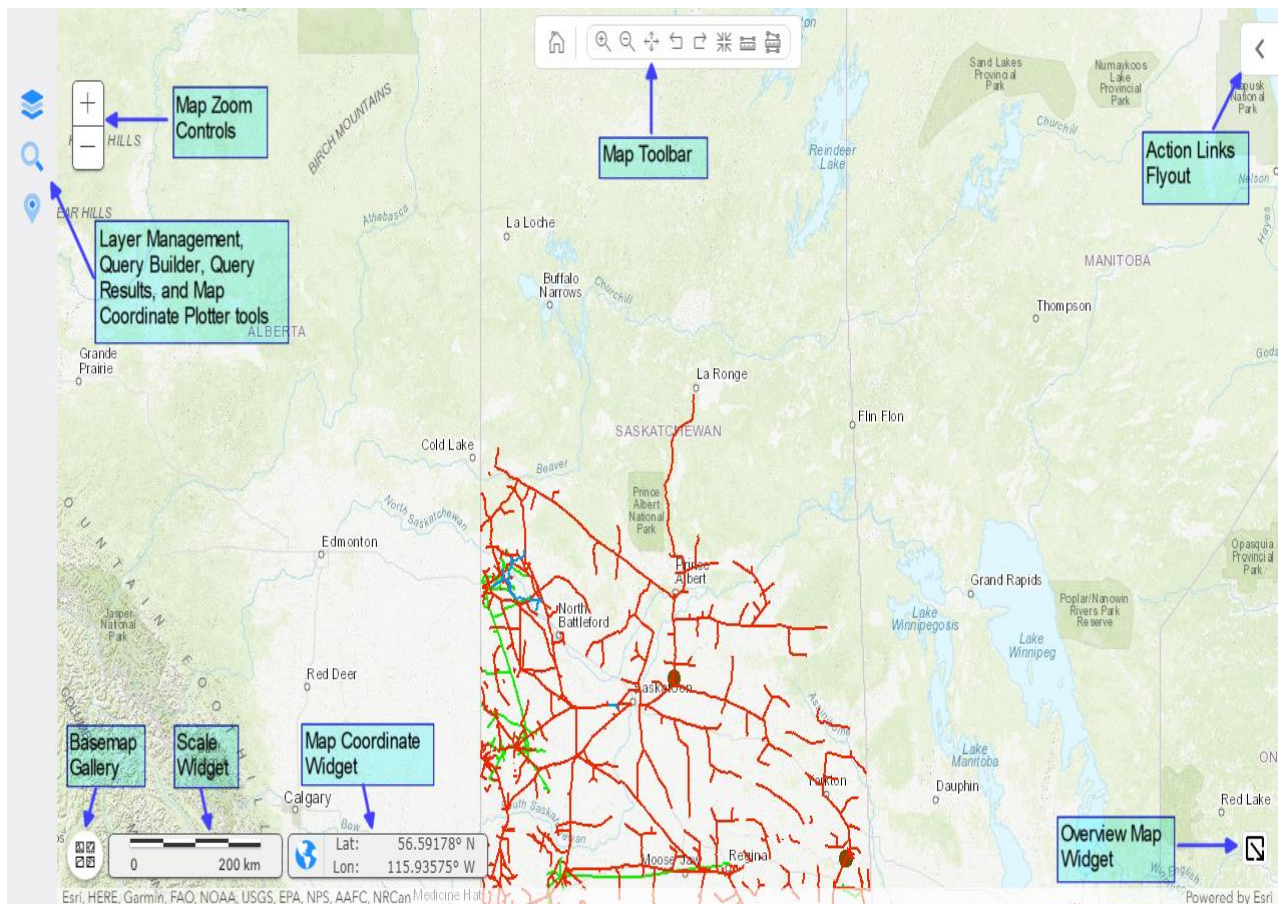
## IPIP Phase 2 Spatial Map Overview

The new Spatial Map enhanced the interactive map-based experience for pipeline activities in the IRIS system with the following highlights:

- Provides a GIS Map screen within the IRIS application for authenticated IRIS users.
- Map viewer can be accessed from the main menu in IRIS.
- Map layers panel allows you to effectively switch from one layer to another.
- Leverages the Enterprise GIS (eGIS) data warehouse for the display of spatial features.
- For specifically configured layers, provides context-sensitive action links that navigate users to existing screens within the IRIS application.
- Provides most standard industry mapping tools: pan, zoom, feature selection, feature query, measurements to name a few.

## Introduction to Spatial map Screens

Map Screen – Home page of the Spatial Map

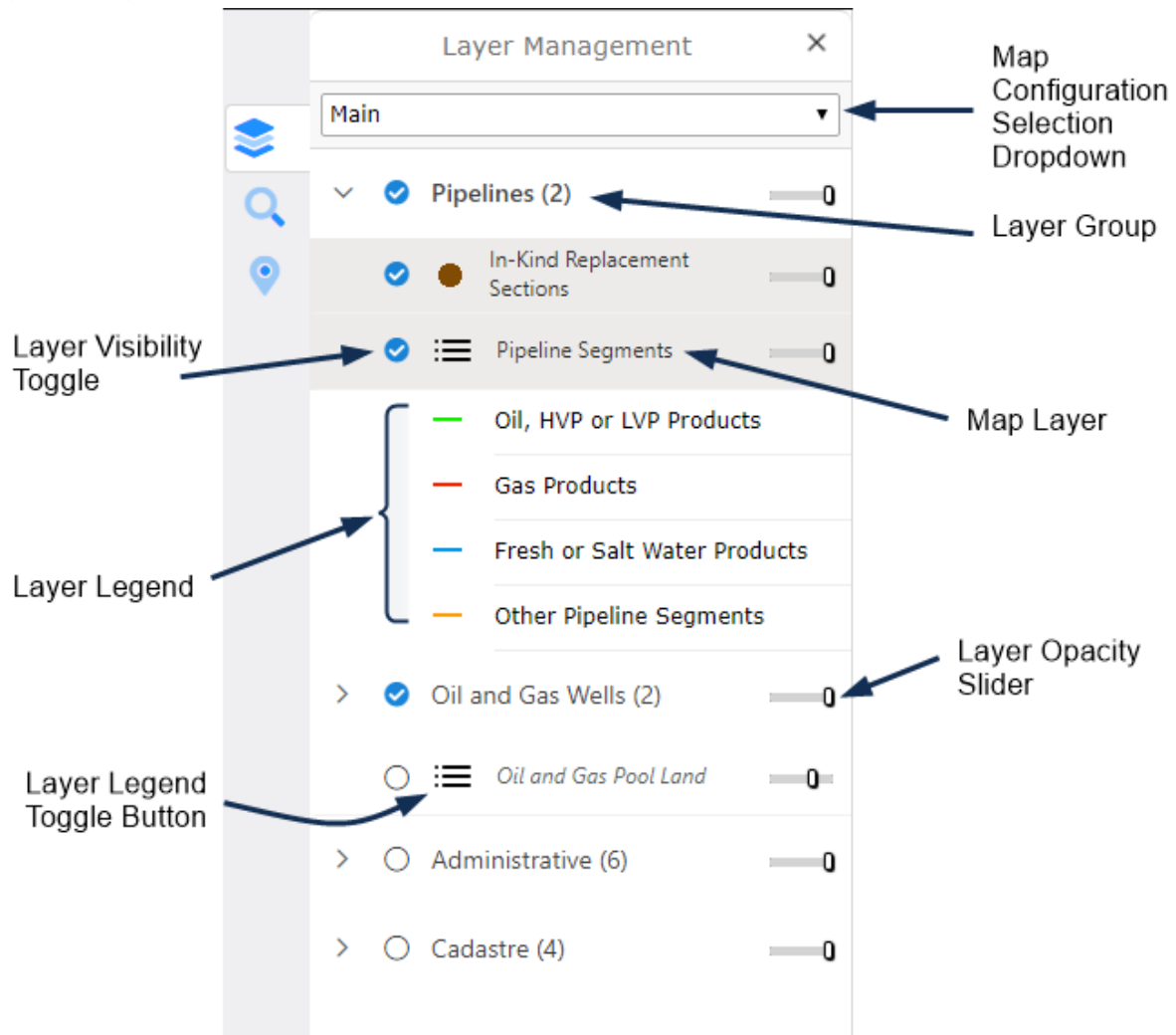


## Map Toolbar



- Functions (from left to right)
  1. **Home:** Returns map view to the default zoom level with displays the entire province.
  2. **Bounded Zoom In:** Zooms the map view into an area defined by drawing a bounding box on the map using the mouse.
  3. **Bounded Zoom Out:** Zooms the map view out keeping an area, defined by drawing a bounding box on the map using the mouse, centered on the map.
  4. **Pan:** Allows the map view to be moved by clicking and dragging. It does not change the zoom.
  5. **Previous Extent:** Resets the map location and/or zoom to the previous setting (like an Undo function).
  6. **Next Extent:** Resets the map location and/or zoom to the next setting (like a Redo function).
  7. **Area Select:** Queries all visible map layers finding features that are inside an area defined by drawing a bounding box on the map using the mouse.
  8. **Distance Measure:** Displays the linear distance measurement tool.
  9. **Area Measure:** Displays the area measurement tool.

## Layer Management Panel



- Allows the selection of different map configurations. Selecting a map configuration from the drop-down will load a new set of layers.
- Allows the visibility of groups of layers or individual layers to be toggled.
- Allows for the adjustment of the opacity (aka transparency) value of a layer to be changed, allowing sub-layers to become less obstructed. Primary useful for polygon-based layers.
- Allows viewing of a layer's legend, showing the configured symbology.

## Query Builder Panel

The screenshot shows the Query Builder interface with the following components and annotations:

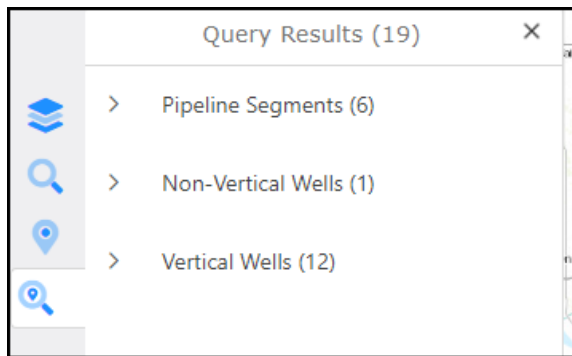
- Data Source:** Pipeline Segments (Annotation: Query Data Source Selection)
- Map Area:** All (Annotation: Should query find features in the entire map or just the visible extent)
- Query Criteria Builder:** A table of rules with columns for Attribute, Operator, and Parameter. It includes logic options (AND/OR) and actions (Add rule, Add group, Delete).

Logic	Attribute	Operator	Parameter	Action
<input checked="" type="radio"/> AND <input type="radio"/> OR	OWNERBA	equal	00086	×
	ISRETROL	equal	Yes	×
<input type="radio"/> AND <input checked="" type="radio"/> OR	SUBSTANT	equal	Fresh Wat	×
	SUBSTANT	equal	Salt water	×

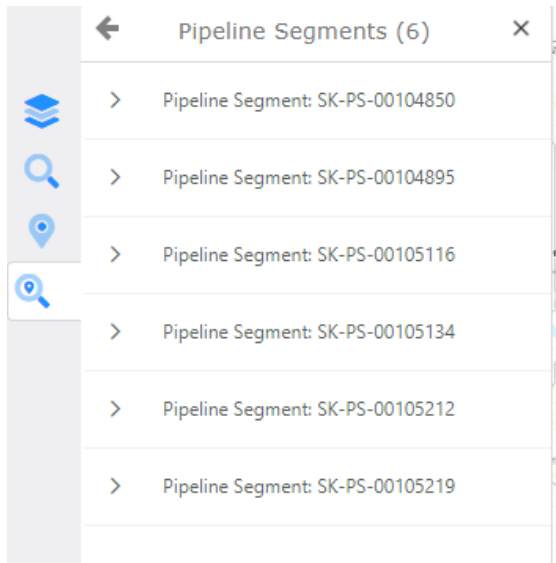
(Annotation: Rule Group)  
(Annotation: Rules in a group can be ANDed or ORed together)
- Attribute Dropdown:** Points to the attribute field in the rules table.
- Operator Dropdown:** Points to the operator field in the rules table.
- Parameter Entry or Dropdown:** Points to the parameter field in the rules table.
- Execute Search:** A Search button at the bottom right.

- Allows feature layers to be queried using an attribute-based query rather than selecting features on the map view.
- Query Builder allows for simple or complex nested logic in the building of the rules.
- Only visible layers can be selected in the Data Source drop-down.
- Query results are listed in the Query Results panel.

## Query Results Panel



- Query Results list all layers where features were found in the last feature selection.
- A layer can be expanded to list the specific features.



← Pipeline Segment: SK-PS-00... ×

**Pipeline Segment: SK-PS-00104850**

Pipeline Licence Information

LICENCE NUMBER	PL 04157
LICENCE TYPE	Pipeline
LICENCE ISSUE DATE	2004-05-11
LICENCE STATUS	Issued
OWNER BAID	01302
OWNER NAME	TRANSGAS LIMITED
PIPELINE NAME	25.0100.100 ROSETOWN - DELMAS NPS 20
IS RETRO LICENCE FLAG	NO
IS LEGACY LICENCE FLAG	YES
SUBSTANCE	Natural Gas
SUBSTANCE QUALIFIER	
GAS PHASE	YES
MAX H2S CONCENTRATION	

Pipeline Segment Information

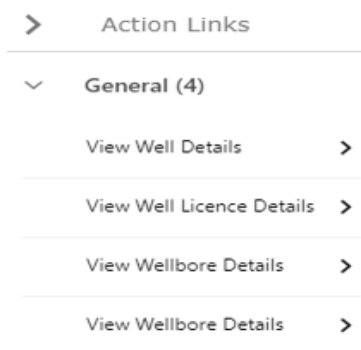
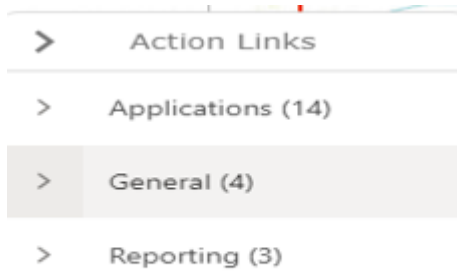
PIPE SEGMENT NUMBER	1
SEGMENT STATUS	Operating
IS RETRO SEGMENT FLAG	NO
IS LEGACY SEGMENT FLAG	YES
FROM INFRASTRUCTURE TYPE	

Esri, OpenStreetMap contributors, HERE, Garmin, FAO, USGS, NGA, EPA, NPS, AAFC, NRC

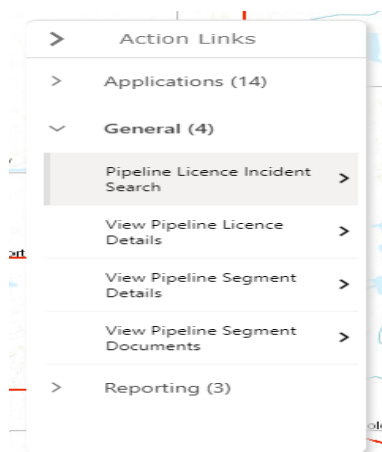
- Expanding a single feature in the Query Results panel displays the features Attribute Pop-up Panel. Additionally, the selected feature is highlighted on the map and the map is centered on the selected feature.

## Action Links Flyout

The action link flyout will only display IRIS information related to Pipelines, Flowlines and wells.



- Individual layers can be configured to display context-sensitive action links when a single feature in the layer is selected.
- Action Links can be separated into logical groupings. Expanding a group will display the list of links appropriate for the selected feature.

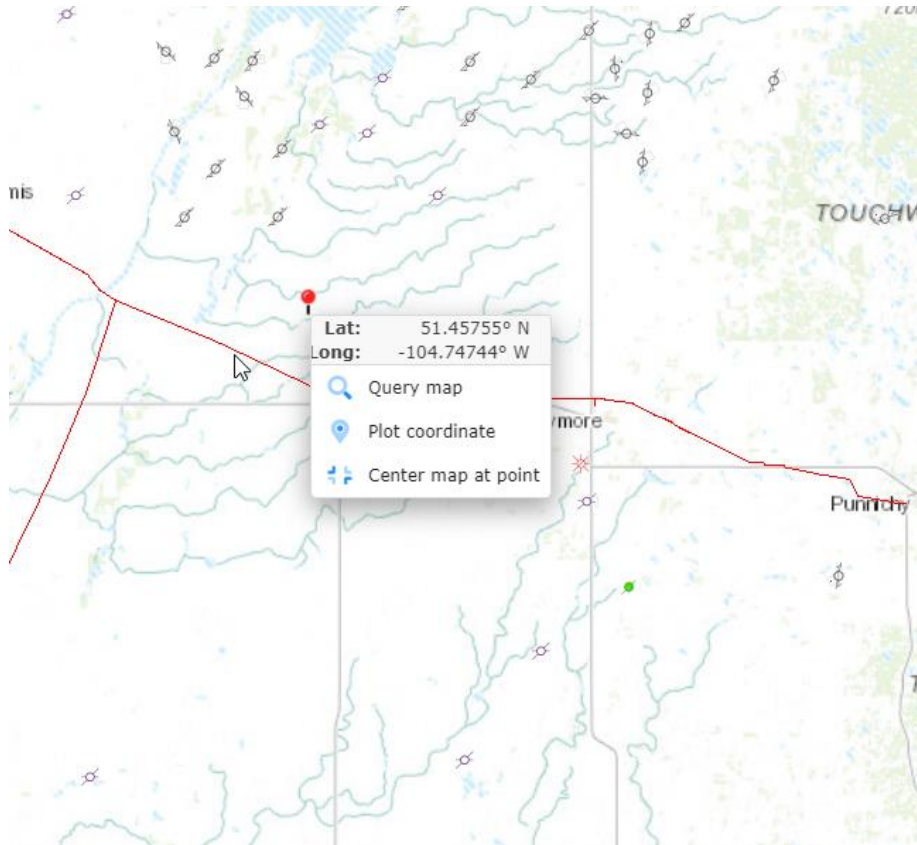


- Action Links will generally navigate to an IRIS screen with query string parameters that allow the screen to pre-populate itself. Linked pages are always opened in a new browser tab.



## Additional Functions

- At any point the mouse can be hovered over the map window and a right click mouse functions can be executed the following:




- Displays** the Latitude and Longitudes of the selected point, by left clicking a point then right clicking to open the popup.
- Query Map:** to enable this feature place your cursor on the desired map feature (well or pipeline), left click first then right click and select Query Map, the results will appear on the left display panel. The query results will only be generated if a map layer theme has been enabled.
- Plot coordinate:** to enable this feature place your cursor on the desired map feature (well or pipeline), left click first then right click, then select Plot coordinate and the results will appear on the left display panel. From the dropdown picklist you can change the Coordinate type. Then click "x" to close
- Center map at point:** to enable this feature place your cursor anywhere on the map, left click first then right click, select center map point and the map will center around the point location.

## Frequently Asked questions

### 1. How do I search for a Licence / Segment in the map?

You can search for a Licence / Segment using the query builder panel by following these steps:

- a. Select  (query builder) from the menu on the left.
- b. Select the data source and add rules under the query criteria builder. You can add 1 or multiple rules to build your query.  
Example: Select 'Licenceidentifier/Segmentidentifier' as the rule attribute and enter the Licence # / Segment ID you want to search.
- c. Click 'Search' at the bottom of the query builder panel.
- d. All the features that match the provided criteria will be presented in the query results panel.
- e. Select the feature you are looking for.
- f. This action would zoom you into the selected feature, display all the corresponding attributes in the feature attribute popup panel.
- g. All the actions that can be taken from the selected feature will be visible under the Action Links flyout.

### 2. Why can't I find my Segment / Licence in the Spatial map?

There can be multiple reasons why you can't find your Segment / Licence in the Spatial map:


- a. The Licence is waiting an ER SME review and approval.
- b. The approved Licence has not been updated in the eGIS server. There is usually a 24 – 48 hours delay to show the updated information on the map.
- c. The Licence / Segment does not have a Spatial file attached.

### 3. Why can't I find my newly approved Licence on the map?

Spatial map leverages the Enterprise GIS (eGIS) data warehouse to display spatial features. There is usually a 24-48 hours delay to show the updated information on the map.

4. How do I search for a Segment / Licence with multiple conditions?

To search for a Segment/Licence with multiple conditions, follow these steps:

- a. Select  (query builder) from the menu on the left.
  - b. Select the data source and add rules under the query criteria builder. You can add 1 or multiple rules to build your query. Use 'Add rule' to add multiple rules to your query.
  - c. Click 'Search' at the bottom of the query builder panel.
  - d. All the features that match the provided criteria will be presented in the query results panel.
  - e. Select the feature you are looking for.
  - f. This action would zoom you into the selected feature, display all the corresponding attributes in the feature attribute popup panel.
  - g. All the actions that can be taken from the selected feature will be visible under the Action link flyout.
5. How can I look at the attributes for a feature on the map?

- a. Once you have identified the feature on the map, right-click on the feature. From the popup menu, select 'Query Map'. (This action performs a search and displays the selected feature in the search result panel.)
- b. Select the feature from the search results panel.
- c. All the corresponding attributes will be displayed in the feature attribute popup panel.
- d. All the actions that can be taken from the selected feature will be visible under the Action Link flyout.

6. What actions can I perform on my Segment from the map?

Several actions can be performed on a selected feature from the Spatial Map. The list of actions presented on the Action Link flyout is dependent on factors such as:

- a. Are you the owner BA?
- b. The status of the feature.
- c. Are you a BA or Ministry?

7. Can I initiate a new Licence application from the map?

No. A Spatial Map displays Licences and Segments that are approved and exist in IRIS. To initiate a new Licence application please use the existing IRIS process:

8. Can I edit a segment from the map?

No. Edits cannot be made to a feature directly from the map. To initiate a segment amendment, please use the existing IRIS process: Applications > Pipeline/Licence > Segment Data Amendment

9. When I make edits to a Segment when will they appear on the map?

Spatial map leverages the Enterprise GIS (eGIS) data warehouse to display spatial features. There is usually a 24-48 hour delay to show the updated information on the map.

10. Can I display only my BA's pipelines?

All the information displayed on the Spatial map is publicly available; hence, does not have any restrictions. You can search and look at any Pipeline/flowline/ Licence irrespective of the owner; however; the information that is private or restricted in nature is only visible to the owner BA.

11. Can you print directly from the map?

You can use the browser print option to print the map.

12. Can the resulting search segments/Licence be exported?

As of now, this feature is not supported by the Spatial map.