

WEYBURN

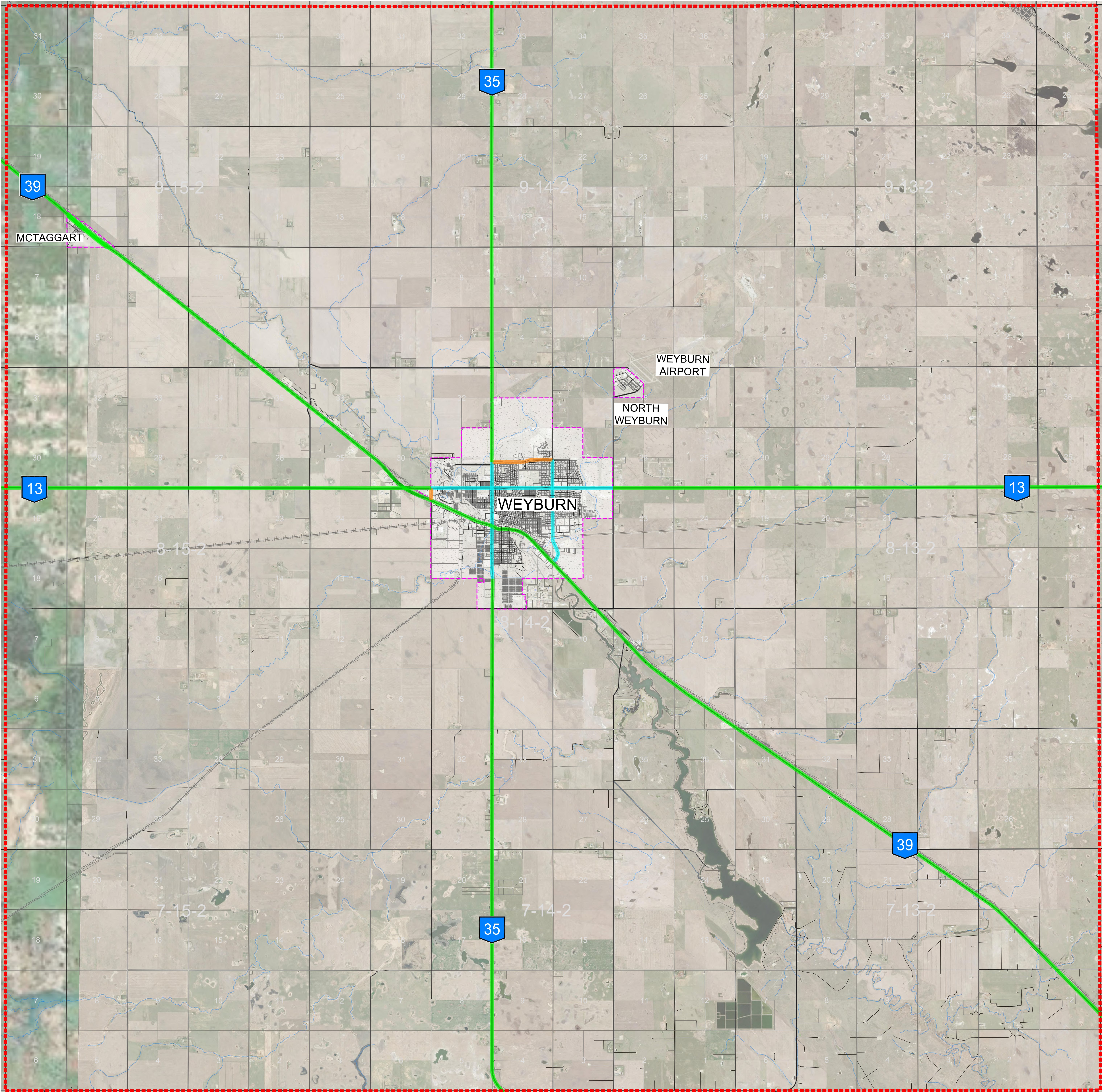
REGIONAL TRANSPORTATION STUDY



OBJECTIVES

- Define a Regional Transportation Plan that is sustainable, safe, and efficient for both existing and long-term horizons.
- Examine potential transportation infrastructure requirements to serve future development.
- Identify staging opportunities for the short-, medium- and long-term transportation network upgrades.
- This project focuses on the Regional Transportation Network around the city of Weyburn, and is separate from other improvements along the Highway 39 corridor.

WHERE DO YOU LIVE & WORK?



LEGEND

STUDY LIMITS / R.M. BOUNDARY

URBAN BOUNDARIES

EXISTING HIGHWAYS AND ROADS

EXISTING RAILWAY

CLASSIFICATION:




PROVINCIAL HIGHWAYS

ARTERIALS

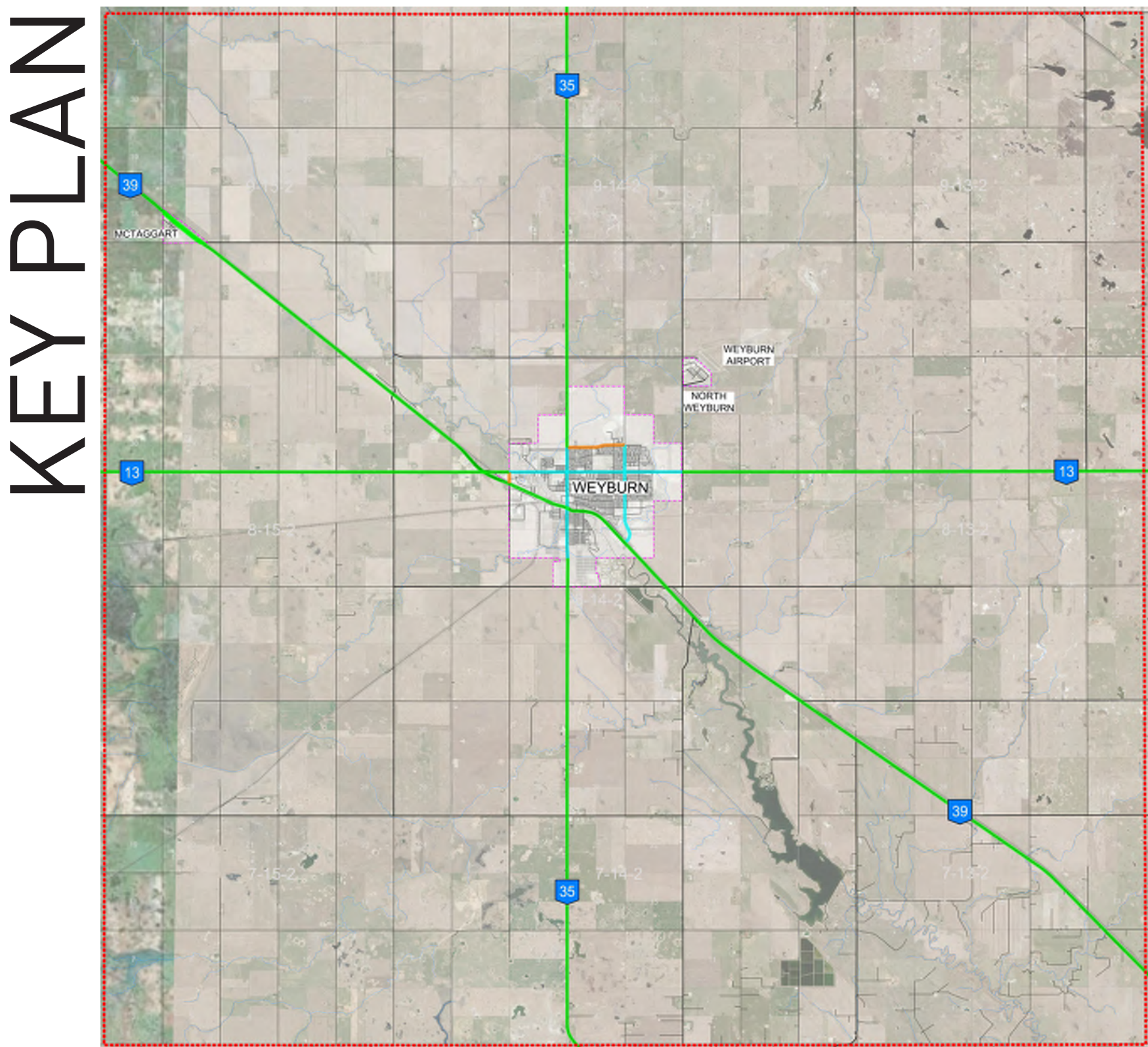
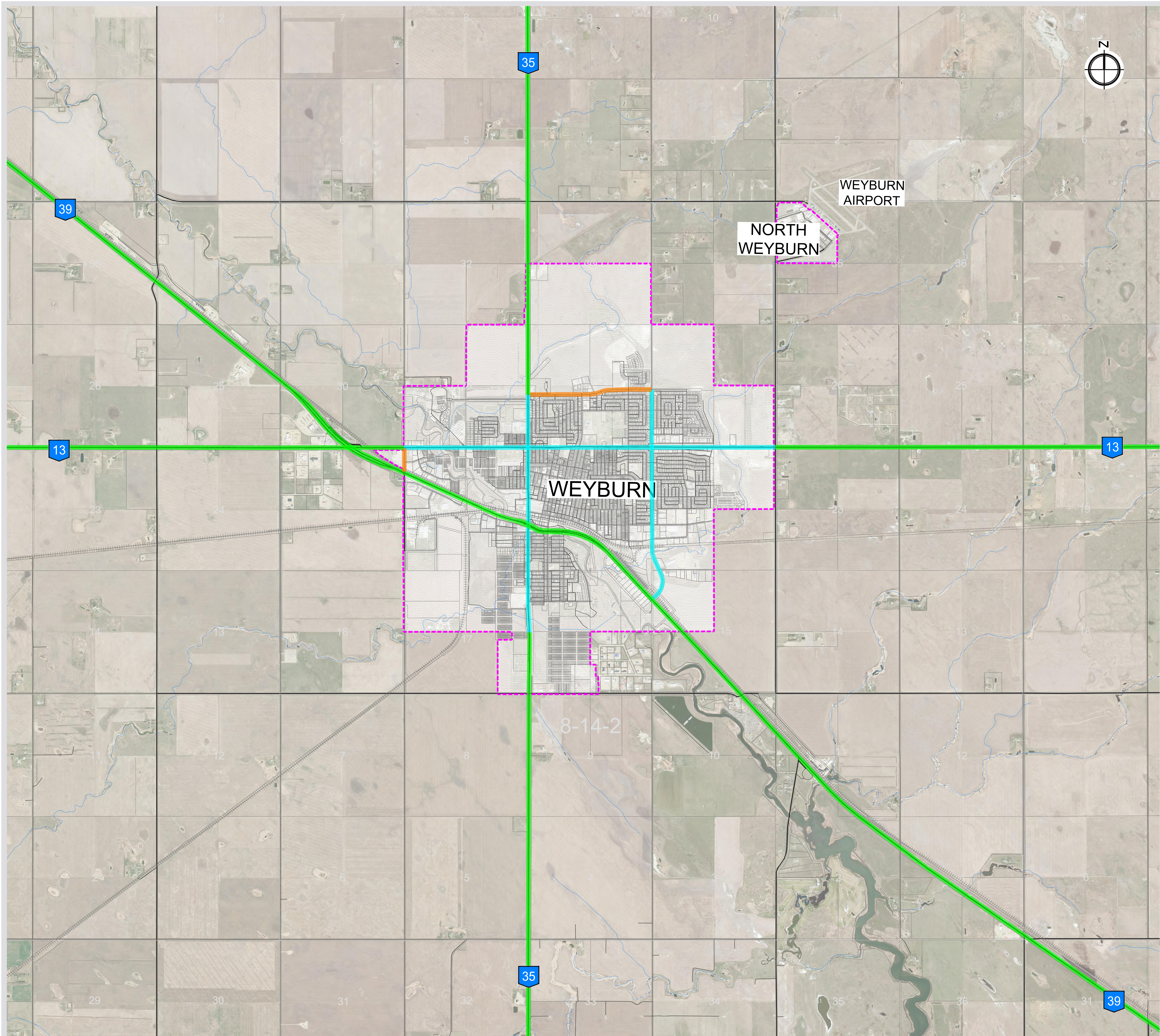
COLLECTORS

● Where do you live?

● Where do you work?



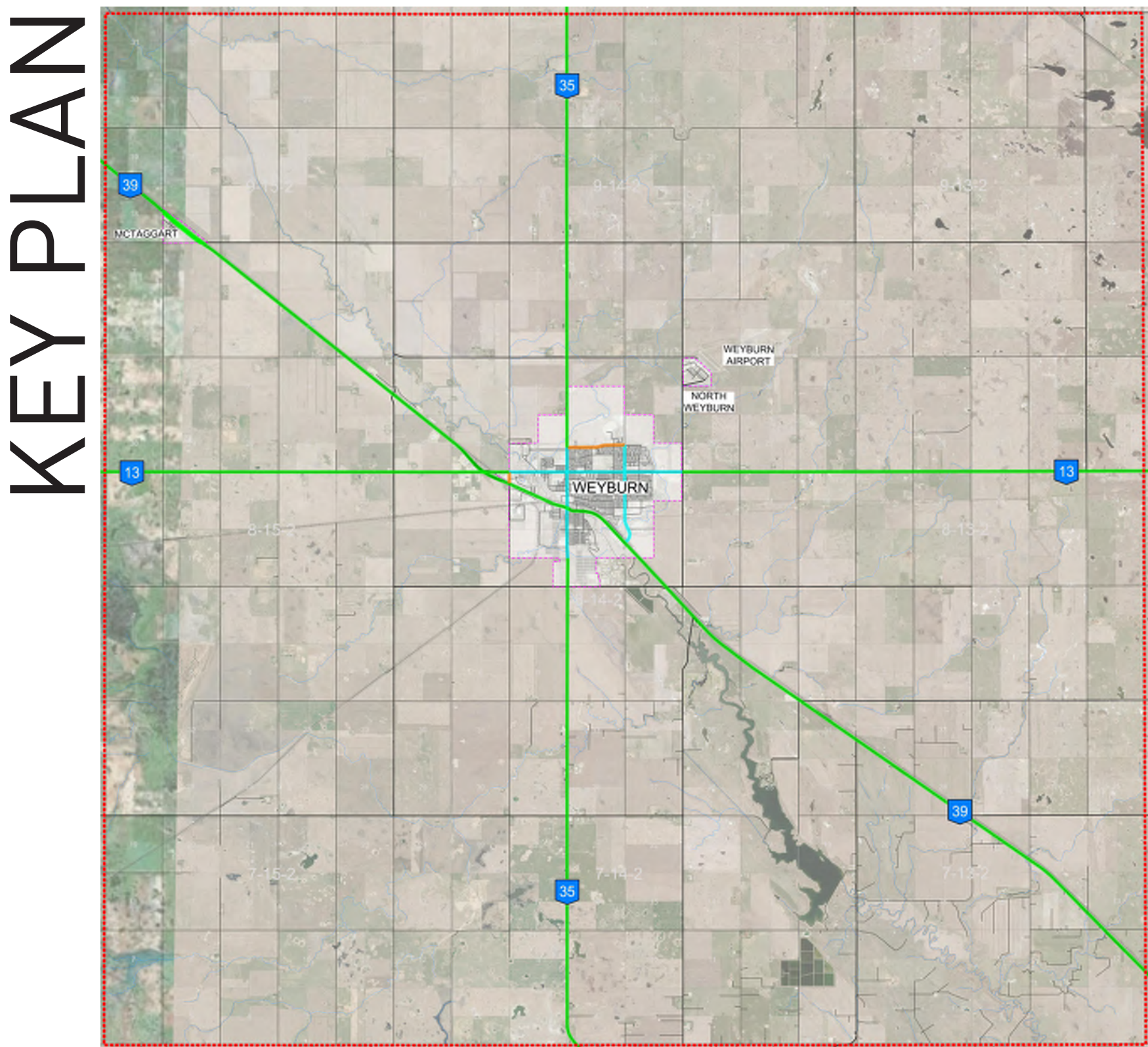
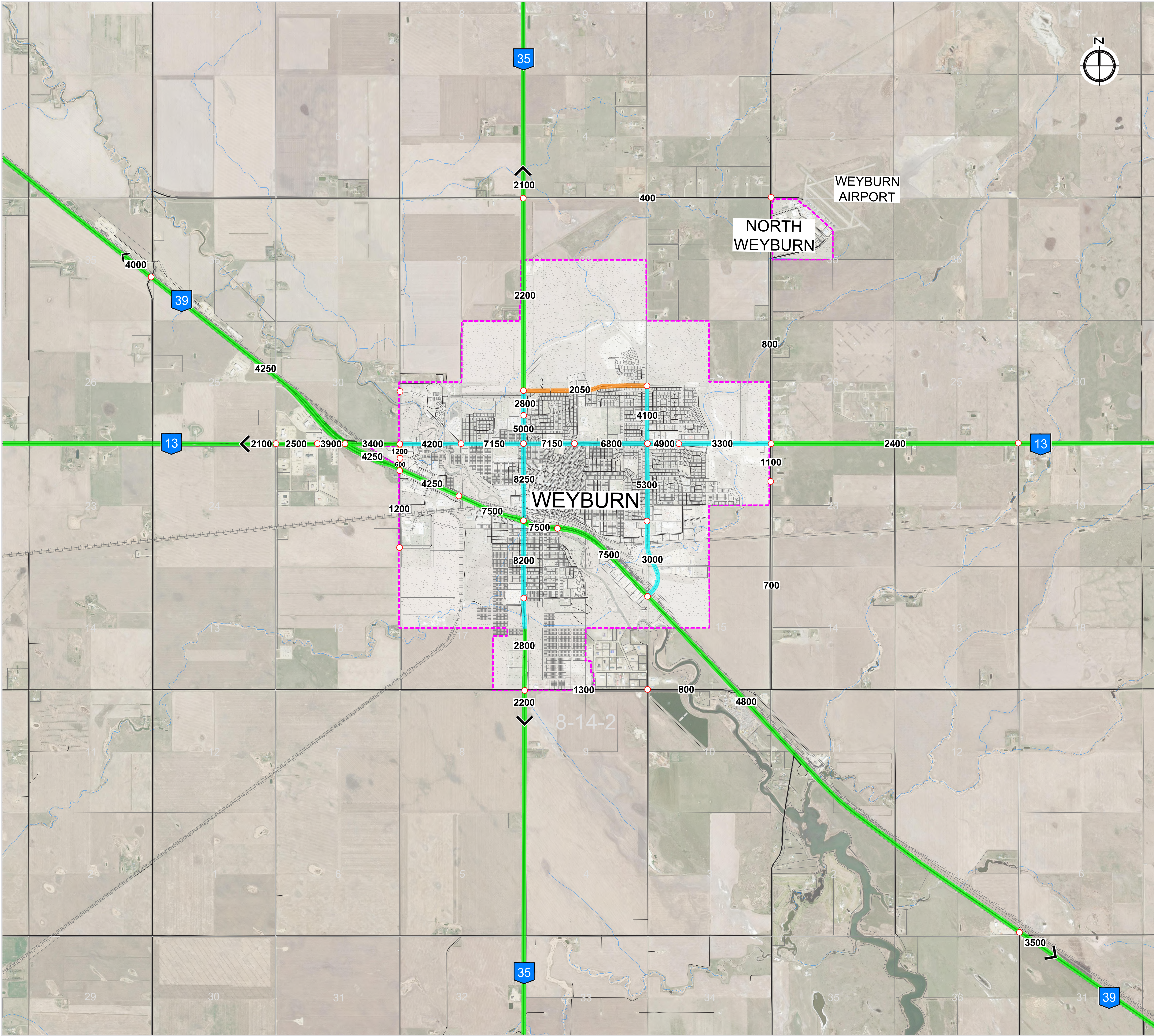
TRANSPORTATION NETWORK



- LEGEND
- STUDY LIMITS / R.M. BOUNDARY
-
- URBAN BOUNDARIES

CLASSIFICATION:

DAILY TRAFFIC VOLUMES



- LEGEND
- STUDY LIMITS / R.M. BOUNDARY
 - URBAN BOUNDARIES
 - EXISTING HIGHWAYS AND ROADS
 - EXISTING RAILWAY
- CLASSIFICATION:
- PROVINCIAL HIGHWAYS
 - ARTERIALS
 - COLLECTORS

INITIAL LIST OF ISSUES

■ Highway 39 & Highway 13

- The intersection intersects at a skew which causes restricted sightlines.
- The sun restricts vision during the peak hours at certain times of the year.
- Multiple vehicles were observed waiting in the median.

■ Railway

- Traffic is frequently delayed at Highway 13, Queen Street, Government Road, and 16th Street during peak periods due to train crossings.

■ Highway 39 & Nickle Lake Access

- Identify the traffic impacts of combining the Haul Road with the Nickle Lake Access.



NEXT STEPS

- **On-going:**
 - Identify Future Network Needs
- **July 2019:**
 - Evaluate Feedback / Analysis
 - Determine Transportation Network Options
- **August / September 2019:**
 - Develop Draft Regional Transportation Network Plan
- **October 2019:**
 - Public Information Session #2
- **October / November 2019:**
 - Final Report