

Northern zone - special regulations



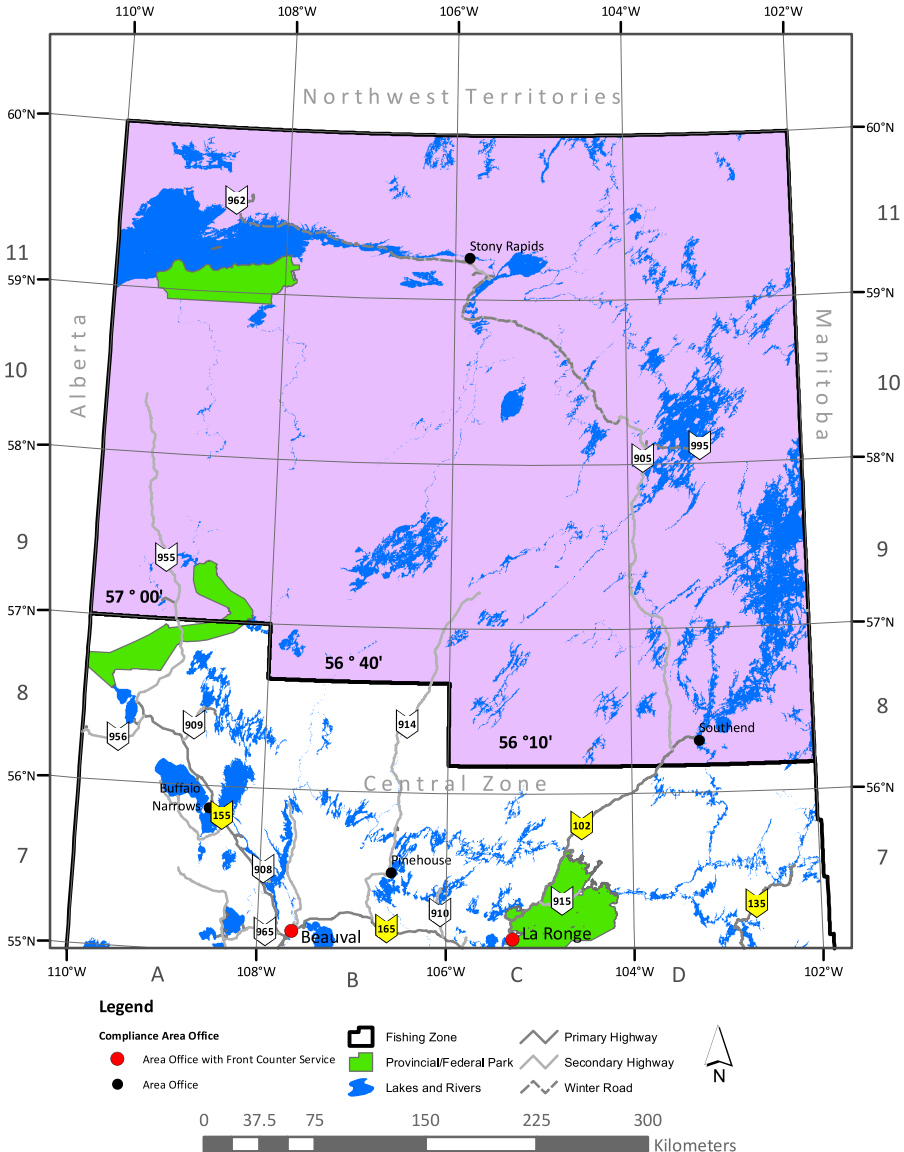
Scan for northern zone regs

2026-27 season dates: May 25, 2026 to April 15, 2027

See page 9 for catch-and-release (CR) water species limits.

Contact your local Government of Saskatchewan field office

or the Inquiry Centre at centre.inquiry@gov.sk.ca for clarification of all regulations.



Indicates CR water

Indicates stocked trout water - open all year

Please note: all dates are inclusive.

Water	Map	Special regulation	Water	Map	Special regulation
Ahenakew Lake	10D	(58°02' 103°55') CR3 limits	Cree River	10C	CR1 limits from Giles Lake to Wapata Lake
Alces Lake	11A	(59°41' 108°21') CR3 limits	(58°57' 105°47')		
Amber Lake	9A	Stocked trout; open all year	Crooked Lake	10D	(58°43' 103°56') Cr3 limits
Anderson Lake	8C	(56°32' 105°22') CR3 limits	Dodge Lake	11C	(59°50' 105°36') CR3 limits
Babiche Lake	10D	(58°56' 103°34') CR3 limits	Dube Lake	10C	(58°35' 105°04') Cr3 limits
Bannock Lake	10D	(58°51' 102°42') CR3 limits	Duncan Lake	9C	CR1 limits on Duncan Lake at the junction of the Geikie and Wheeler Rivers
Bentley Lake	10D	(58°51' 103°22') CR3 limits	(57°34' 104°15')		
Bird Lake	9C	(57°52' 104°21') CR3 limits	Dunnet Lake	9D	(57°28' 103°32') CR3 limits
Boland Lake	9D	(57°52' 103°50') CR1 limits	Durrant Lake	10C	(58°34' 104°25') CR3 limits
Brakewell Lake	9D	(57°30' 103°43') CR3 limits	Ed's Lake	9A	Stocked trout; open all year
Briggs Lake	9C	(57°53' 104°38') CR3 limits	Engler Lake	11B	(59°08' 106°52') CR2 limits
Cairns Lake	9D	(57°39' 103°19') CR3 limits	Eynard Lake	11C	(59°58' 105°47') CR3 limits
Carlson Creek	9C	CR3 limits from 57°47'15" 104°47' to 57°52' 104°48'	Fond du Lac River	10D	CR1 limits from Wollaston Lake to the south end of Redwillow Rapids at 58°31' 103°34'; CR3 limits from Kosdaw Lake to Crooked Lake
(57°47' 104°47')			(59°17' 106°00')		
Causier Lake	9D	(57°31' 103°49') CR3 limits	Fontaine Lake	11B	(59°42' 106°27') CR2 limits
Charcoal Lake	10D	(58°49' 102°22') CR3 limits	Fontaine Lake	9A	Stocked trout; open all year
Charles Lake	9D	(57°23' 103°36') CR3 limits	Forsyth Lake	10C	(58°37' 104°42') CR3 limits
Cochrane River	10D	CR1 limits from Wollaston Lake to Bigstone Rapids at 58°49' 102°45'	Geikie River	9C	CR1 limits from Wollaston Lake to the north end of Duncan Lake at 57°33' 104°12'
(58°45' 103°00')			(57°18' 104°40')		
Collins Creek	10D	CR1 limits from Kewen Lake to Wollaston Lake	Ghana Lake	8D	(56°40' 103°28') CR3 limits
(58°10' 103°45')			Gillespie Lake	9D	(57°06' 103°28') CR3 limits
Compulsion River	9D	CR1 limits from Wollaston Lake to point on river at 57°33' 103°37'	Gow Lake	8C	(56°28' 104°29') CR1 limits
(57°40' 103°24')			Grandin Lake	11C	(59°46' 105°58') CR3 limits
Conacher Lake	9D	(57°20' 103°01') CR2 limits			
Corson Lake	10D	(58°44' 103°45') CR3 limits			
Costigan Lake	8B	(56°11' 106°21') CR2 limits			
Crampean Lake	10D	(58°15' 102°54') CR3 limits			

New regulations for a specific waterbody marked in red with an asterisk (*).

 Indicates CR water


 Indicates stocked trout water - open all year

Please note: all dates are inclusive.

Water	Map	Special regulation	Water	Map	Special regulation
Granger Lake	10C	(58°33' 105°12') CR2 limits	Kirkpatrick Lake	9C	(57°54' 104°39') CR3 limits
Grayson Lake	8C	(56°17' 104°37') CR1 limits	Kirsch Lake	9C	(57°56' 105°16') CR1 limits
Hannah Lake	11D	(59°06' 102°34') CR3 limits	Klemmer Lake	10D	(58°21' 102°45') CR3 limits
Haresign Lake	8C	(56°52' 105°56') CR2 limits	Kosdaw Lake	10C	(58°55' 104°01') CR3 limits
Hasbala Lake	11D	(59°57' 102°00') CR3 limits	Kroeker Lake	10D	(58°17' 102°56') CR3 limits
Hastings Lake	8C	(56°54' 105°27') CR3 limits	Lampin Lake	10D	(58°09' 103°54') CR3 limits
Hatchet Lake	10D	(58°38' 103°40') CR3 limits	Le Drew Lake	10D	(58°34' 103°55') CR3 limits
Hawkrock River (58°55' 104°47')	11C	CR1 limits from Forsyth Lake to Umfreville Lake	Little Yalowega Lake	9C	(57°48' 104°53') CR2 limits
Hedman Lake	9D	(57°09' 103°05') CR3 limits	Lloyd Lake	9A	(57°22' 108°57') CR2 limits
Hobson Lake	8B	(56°49' 106°11') CR2 limits	Lower Foster Lake	8C	(56°33' 105°23') CR2 limits
Hodges Lake	9C	(57°20' 104°50') CR1 limits	Lucie Lake	9D	(57°40' 103°52') CR3 limits
Holmesa-Court Lake	8C	(56°15' 105°02') CR3 limits	MacFarlane River (59°12' 107°58')	11B	CR2 limits from river mouth on Athabasca Lake at 59°12' 107°58' to midpoint of first rapids 10 km upstream at 59°08' 107°53'
Hooker Lake	10D	(58°13' 102°45') CR3 limits	MacKenzie Lake	9D	(57°50' 102°43') CR2 limits
Horvath Lake	8D	(56°51' 103°27') CR3 limits	Manson Lake	10D	(58°39' 103°16') CR3 limits
Hull Lake	10D	(58°09' 102°28') CR3 limits	Many Islands Lake	11D	(59°42' 102°10') CR1 limits
Hydichuk Lake	10D	(58°03' 102°46') CR3 limits	Mathison Lake	10C	(58°29' 104°54') CR2 limits
Jackson Lakes	9D	(57°46' 103°34') CR1 limits	Mawdsley Lake	8B	(56°47' 106°07') CR2 limits
Johnson Lake	9C	(57°26' 104°11') CR3 limits	McConnell Lake	9D	(57°50' 103°35') CR3 limits
Johnston Lake	10C	(58°16' 104°46') CR2 limits	McDonald Creek (58°48' 105°08')	10C	CR1 limits from McDonald Creek to Pattyson Lake
Kalheim Lake	10D	(58°52' 102°01') CR3 limits	McDonald Lake	8C	(56°15' 104°41') CR1 limits
Kane Lake	8D	(56°54' 103°32') CR3 limits	McDonald River	9D	(57°39' 104°39') CR3 limits
Kernaghan Lake	10C	(58°40' 104°10') CR3 limits	McIntyre River	11C	CR1 limits from rapids to Pinkham Lake (59°18' 104°04')... <i>(next page)</i>
Kerslake Lake	10D	(58°16' 102°41') CR3 limits			
Kewen Lake	10D	(58°11' 103°51') CR3 limits			
Kidd Lake	10D	(58°00' 103°52') CR3 limits			
Kimiwan Lake	11C	(59°56' 105°54') CR3 limits			

New regulations for a specific waterbody marked in red with an asterisk (*).

 Indicates CR water

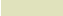
 Indicates stocked trout water - open all year

Please note: all dates are inclusive.

Water	Map	Special regulation	Water	Map	Special regulation
McIntyre River (59°18' 104°09') <i>(continued)</i>	11C	and to rapids 17 km upstream (59°22' 104°02'), including a southwest bay at 59°18' 104°12'	Otherside River <i>(continued)</i>	11B	point of river 1 km upstream of Richards Lake (59°12' 107°14')
Michael Lake	9D	(57°51' 104°00') CR3 limits	Patterson Lake	11D	(59°56' 102°18') CR1 limits
Middle Foster Lake	8C	(56°38' 105°25') CR3 limits	Paull Lake	8C	(56°08' 104°48') CR3 limits
Misaw Lake	11D	(59°52' 102°30') CR1 limits	Pawliuk Lake	9C	(57°50' 104°41') CR3 limits
Moffatt Lake	10D	(58°17' 103°47') CR3 limits	Pearce Lake	9D	(57°45' 102°44') CR2 limits
Moore Lakes	9C	(57°27' 105°03') CR3 limits	Pipestone Lake	9B	(57°54' 106°35') CR1 limits
Morell Lake	9D	(57°37' 103°46') CR3 limits	Poulton Lake	9C	(57°50' 104°27') CR3 limits
Morwick Lake	9D	(57°30' 103°19') CR3 limits	Premier Lake	11B	(59°53' 106°05') CR3 limits
Mullin Lake	9D	(57°37' 103°17') CR3 limits	Pritchard Lake	8D	(56°45' 103°33') CR3 limits
Mullins Lake	10C	(58°09' 104°51') CR3 limits	Reilly Lake	9D	(57°12' 103°10') CR2 limits
Murphy Lake	10C	(58°26' 104°21') CR3 limits	Reindeer Lake	9D	(57°30' 102°15') CR1 limits
Myers Lake	9C	(57°24' 105°27') CR3 limits	Reindeer River	8D	River south of 56°10' 103°11' closed to angling March 31 to May 14
Nokomis Lake	9D	(57°00' 103°00') CR3 limits	Reisner Lake	9D	(57°47' 103°35') CR3 limits
Nordbye Lake	11D	(59°04' 103°30') CR3 limit s	Reynolds Lake	9D	(57°56' 102°45') CR3 limits
Obst River (58°51' 103°35')	10C	CR3 limits from Waterfound Bay to river narrows 15 km upstream at 58°49' 103°52'	Richards Lake	11B	(59°10' 107°10') CR2 limits
Oliver Lake	8D	(56°56' 103°22') CR3 limits	Riou River (59°08' 106°44')	11B	CR2 limits from Richards Lake to point on river 1 km upstream of Engler Lake
Oman Lake	11C	(59°42' 106°45') CR3 limits	Rupert Lake	8C	(56°54' 105°03') CR3 limits
Oriordan Lake	9D	(57°40' 103°47') CR3 limits	Rutherford Lake	9D	(57°21' 103°17') CR3 limits
Otherside River (59°16' 106°55')	11B	CR2 limits from river mouth at Otherside Bay on Athabasca Lake defined by a small point of land on the northwest shore of Otherside Bay (59°16' 106°55') to the...(cont.)	Salaba Lake	9D	(57°45' 103°41') CR3 limits
			Scott Lake	11B	(59°55' 106°18') CR3 limits
			Scrim Lake	10D	(58°34' 103°26') CR3 limits
			Scutt Lake	9D	(57°38' 103°37') CR1 limits
			Selwyn Lake	11C	(60°00' 104°30') CR3 limits
			Shagory Lake	11C	(59°53' 104°58') CR3 limits

New regulations for a specific waterbody marked in red with an asterisk (*).

 Indicates CR water

 Indicates stocked trout water - open all year

Please note: all dates are inclusive.

Water	Map	Special regulation	Water	Map	Special regulation
Simpson Lake	9D	(57°41' 103°37') CR3 limits	Unnamed Lake	9D	(57°42' 103°08') CR3 limits
Sovereign Lake	11C	(59°57' 105°39') CR3 limits	Unnamed Lake	9C	(57°43' 104°56') CR3 limits
Spence Lake	9D	(57°33' 103°34') CR3 limits	Unnamed Lake	10D	(58°33' 104°03') CR3 limits
Swan Lake	9D	(57°33' 103°03') CR3 limits	Virgin River (57°02' 108°17')	9A	CR1 limits on all rapids outflowing from Careen Lake (57°00' 108°17'), including 100 m upstream and downstream of rapids
Tadei Lake	8B	(56°48' 106°01') CR2 limits			
Thrift Lake	10D	(58°44' 103°24') CR3 limits			
Torwalt Lake	10D	(58°18' 103°53') CR3 limits			
Townsend Lake	9C	(57°38' 104°44') CR3 limits			
Tremblay Lake	8C	(56°28' 104°42') CR1 limits	Vollhoffer Lake	9C	(57°35' 104°54') CR3 limits
Umpherville Lake	9C	(57°53' 104°19') CR3 limits	Wapata Lake	10C	(58°51' 105°43') CR1 limits
Umpherville River (58°05' 103°48')	10D	CR1 limits from Wollaston Lake to the north end of Ahenakew Lake at 58°05' 103°50'	Ward Creek (58°37' 104°40')	10C	CR2 limits between mouth of Forsyth Lake at 58°37' 104°40' and unnamed lake 50 km upstream at 58°23' 104°51'
Unnamed Lake	10D	(58°19'30" 103°48'30") CR3 limits	Ward Lake	10C	(58°35' 104°35') CR3 limits
Unnamed Lake	8C	(56°16' 104°45') CR2 limits	Waterbury Lake	10C	(58°10' 104°22') CR2 limits
Unnamed Lake	10D	(58°20' 103°51'30") CR3 limits	Waterfound Bay	10C	(58°48' 104°03') CR3 limits
Unnamed Lake	9C	(57°36' 104°18') CR3 limits	Waterfound River (58°28' 104°35')	10C	CR1 limits from Durrant Lake to Theriau Lake; CR3 limits from Waterfound Bay to Durrant Lake
Unnamed Lake	10D	(58°01' 103°46') CR3 limits			
Unnamed Lake	9D	(57°02'57" 103°17'00") CR3 limits			
Unnamed Lake	9D	(57°03'21" 103°17'37") CR3 limits	Wayo Lake	11B	(59°56' 106°21') CR3 limits
Unnamed Lake	9C	(57°25'26" 104°56'39") CR3 limits	West Lake	8D	(56°51' 103°20') CR3 limits
Unnamed Lake	9C	(57°26'50" 104°57'14") CR3 limits	Whigham Lake	10C	(58°48' 104°25') CR3 limits
Unnamed Lake	9C	(57°27'20" 104°57'11") CR3 limits	Wollaston Lake	10D	(58°15' 103°15') CR1 limits
Unnamed Lake	9C	(57°27'25" 104°58'06") CR3 limits	Yalowega Lake	9C	(57°48' 104°53') CR2 limits
Unnamed Lake	9C	(57°27'27" 104°57'23") CR3 limits	Zengle Lake	9D	(57°55' 102°33') CR2 limits
Unnamed Lake	9C	(57°27'36" 104°56'24") CR3 limits	Zimmer Lake	9C	(57°09' 105°33') CR2 limits

New regulations for a specific waterbody marked in red with an asterisk (*).