

# Central zone - special regulations



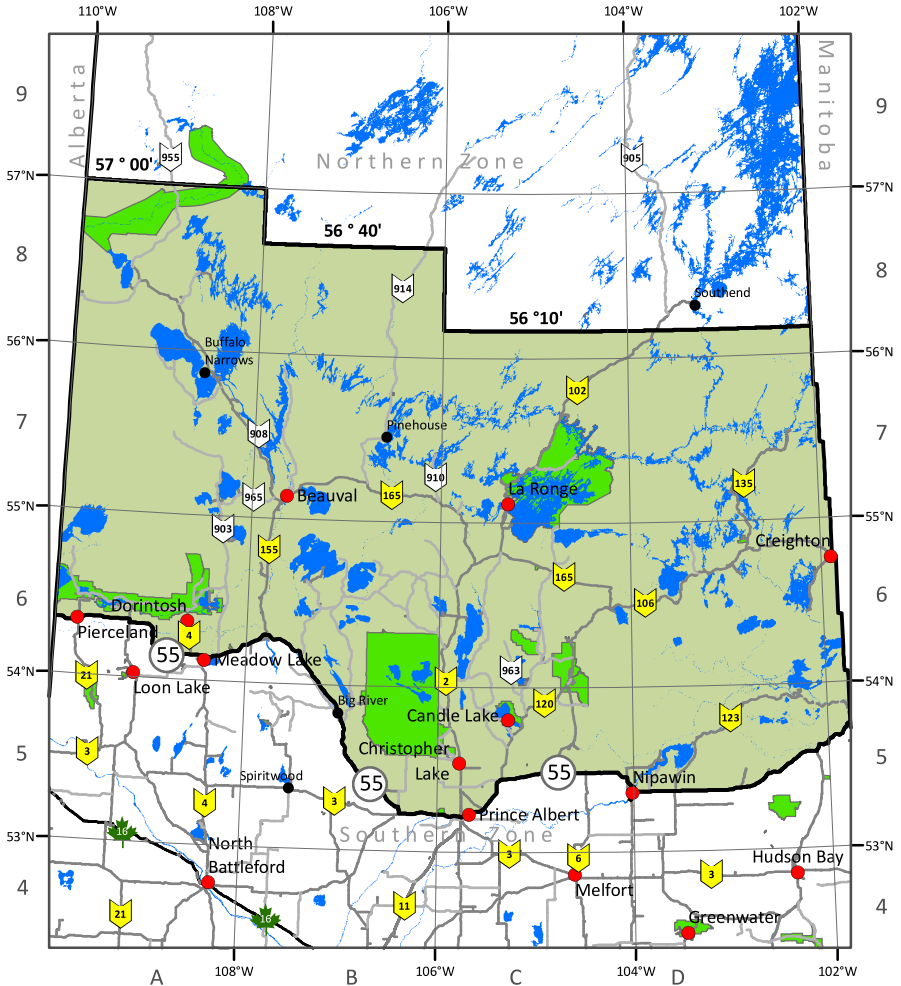
Scan for central zone regs

**2026-27 season dates: May 15, 2026 to March 31, 2027**

See page 9 for catch-and-release (CR) water species limits.

Contact your local Government of Saskatchewan field office

or the Inquiry Centre at [centre.inquiry@gov.sk.ca](mailto:centre.inquiry@gov.sk.ca) for clarification of all regulations.



## Legend

### Compliance Area Office

- Area Office with Front Counter Service
- Area Office



Fishing Zone

Secondary Highway

Primary Highway

Major Highway

Lakes and Rivers

Provincial/Federal Park



N

0 37.5 75 150 225 300

Kilometers

 Indicates CR water

 Indicates stocked trout water - open all year

Please note: all dates are inclusive.

Water	Map	Special regulation	Water	Map	Special regulation
Amisk Lake	6D	See Sturgeon Weir River	Ballantyne River <i>(continued)</i>	6D	and 1 km east of the river mouth and then south to the shore closed to all fishing March 1 to June 15
Atchison Lake	6A	Stocked trout; open all year	Baptiste Lake	8B	(56°11' 106°25') CR3 limits
Athapapuskow Lake	6D	Walleye/sauger limit 4 (combined), none may exceed 55 cm; pike limit 4, none may exceed 75 cm; lake trout limit 1, none may exceed 65 cm; Saskatchewan or Manitoba angling licence is valid on the Saskatchewan part of the lake; mandatory barbless hooks	Barker Lake (includes Devil, McNichol, Otter)	7C	Walleye limit 2, only 1 over 55 cm; pike limit 3, only 1 over 75 cm
Attree Lake	6D	See Sturgeon Weir River	Beatty Lake	6B	Stocked trout; open all year
Bad Carrot Lake	6D	Bad Carrot Lake and River and part of Bertrum Bay of Hanson Lake within 1 km of Bad Carrot River mouth closed to angling March 1 to May 31	Berna Lake	7C	Stocked trout; open all year
Ballantyne Bay	6D	All waters of Ballantyne Bay of Deschambault Lake lying south of a straight line joining a jut of land on the east shore of the bay at 54°34'24" 103°33'43" to the most southeast point on Williams Island and a point of land on the west shore of the bay at 54°34'24" 103°37'4" closed to all fishing March 1 to June 15	Besnard Lake	7B	200 m on each side of the narrows bridge and all of Mercer Bay closed to angling all year
Ballantyne River	6D	River and part of Ballantyne Bay of Deschambault Lake extending approximately 1.5 km north... <i>(cont)</i>	Big Sandy Lake	6C	Walleye limit 1
			Bittern Lake	5C	Walleye limit 3, only 1 over 55 cm
			Blair Lake	8C	(56°08' 104°26') CR1 limits
			Broad Creek	6A	See Keeley Lake
			Burtlein Lake	6C	Stocked trout; open all year
			Caddis Lake	6C	Stocked trout limit 3, only 1 over 43 cm; open all year
			Camp Ten Lake	6B	Stocked trout; open all year
			Candle Lake	5C	Walleye limit 3, only 1 over 50 cm (see Fisher creek)
			Canoe Lake	7A	Walleye limit 1; closed to angling March 1 to May 14, except Jans Bay, Wepooskow Bay and Narrows are closed to all fishing all year
			Caribou Creek	6C	From Upper to Lower Fishing Lake closed to angling April 1 to May 31

New regulations for a specific waterbody marked in red with an asterisk (\*).

 Indicates CR water

 Indicates stocked trout water - open all year

Please note: all dates are inclusive.

Water	Map	Special Regulation	Water	Map	Special Regulation
Carl Creek	6A	Walleye limit 3, only 1 over 55 cm	Devil Lake (includes Barker, McNichol, Otter)	7C	Walleye limit 2, only 1 over 55 cm; pike limit 3, only 1 over 75 cm
Chachukew Lake	7D	Medicine Rapids closed to all fishing March 1 to May 31	Diamond Lake	6C	Stocked trout; open all year
Chopper Lake	6C	Closed to all fishing all year	Dillon River	7A	Walleye limit 3, only 1 over 55 cm
Churchill Lake	7A	Walleye limit 3, only 1 over 55 cm	Dingwall Lake	7C	(55°29' 104°36') CR3 limits
Churchill River	7C	See Barker, Devil, McNichol and Otter Lakes – aggregate limit	Dog Lake	6B	Stocked trout; open all year
Cold Lake (including Cold River between Cold Lake and Pierce Lake)	6A	Walleye limit 3, none may be less than 50 cm; pike limit 1, which must be over 63 cm; lake trout limit 1, which must be between 65 – 70 cm; lake trout limit 0 from September 15 to November 15; whitefish limit 10; perch limit 15; use or possession of any gaff prohibited; Saskatchewan or Alberta angling licences are valid	Dore Lake	6B	Walleye limit 1, which must be 55 cm or greater; all waters of Bazill Bay (54°42' 107°32') lying south of a straight line joining a point of land on the west bank of Bazill Bay at 54°44'32" 107°33'10" to the northern tip of Smith Island in Bazill Bay and the northern tip of a point of land on the east bank of Bazill Bay at 54°43'42" 107°27'14" closed to angling all year
Cora Lake	6C	Stocked trout; open all year	Dorothy Lake	6C	Stocked trout; closed April 1 to May 14
Corneille Lake	6D	Carter Bay west of 102°41'21" closed to all fishing March 1 to May 31	Douglas Lake	6D	No boats allowed
Cub Creek	6C	From Dupueis Lake to Little Bear Lake closed to angling April 1 to May 31	Downton Lake	7C	Stocked trout; open all year
De Balinhard Lake	6A	Walleye limit 3, only 1 over 55 cm	Dunajski Lake	7C	(55°00' 104°37') CR3 limits
Delaronde Lake	6B	Walleye limit 3, only 1 over 55 cm	East Trout Lake	6C	Lake trout limit 2, only 1 over 65 cm; lake trout limit 0 from September 10 to November 10; pike limit 4, only 1 over 75 cm
Deschambault Lake	6D	See Ballantyne Bay, Ballantyne, Oskikebuk Puskwakau rivers and Fisher and Palf creeks	Easterby Lake	7C	(55°34' 105°28') CR3 limits
			Eldridge Lake	7D	(55°12' 103°57') CR1 limits

New regulations for a specific waterbody marked in red with an asterisk (\*).

 Indicates CR water


 Indicates stocked trout water - open all year

Please note: all dates are inclusive.

Water	Map	Special regulation	Water	Map	Special regulation
<b>Emerald Pond</b>	6C	Stocked trout limit 2; closed April 1 to May 14	<b>Head Lake</b> (including Nemeiben Lake)	7C	(55°16' 105°34') CR1 limits. Limit is inclusive of fish caught on both lakes
<b>Emmeline Lake</b>	7B	(55°00' 106°22') CR3 limits	<b>Hildred Lake</b>	6A	Walleye limit 3, only 1 over 55 cm
<b>Eyahpaise Lake</b>	7D	(55°35' 105°35') CR3 limits	<b>Hirtz Lake</b>	6A	Walleye limit 3, only 1 over 55 cm
<b>Feldspar Lake</b>	7C	Stocked trout; open all year	<b>Houlding Lake</b>	7C	(55°04' 104°04') CR3 limits
<b>Fern Lake</b>	6A	Stocked trout limit 3, only 1 over 43 cm; open all year	<b>Humphrey Lake</b>	6A	Walleye limit 3, only 1 over 55 cm
<b>Fifth Lake</b>	6A	Walleye limit 3, only 1 over 55 cm	<b>Iskwatam Lake</b>	7D	Southwest bay of Iskwatam Lake at 55°33'30" 103°08'30", including small river entering from Pow Lake, closed to all fishing March 1 to May 31
<b>First Mustus Lake</b>	6A	Walleye limit 3, only 1 over 55 cm	<b>Iskwatikan Lake</b>	7C	CR1 limits
<b>Fisher Creek</b>	5C	Walleye limit 3, only 1 over 50 cm; creek and part of Candle Lake near creek mouth closed to angling March 15 to May 14	<b>Jackson Lake</b>	7C	(55°28' 105°38') CR3 limits
<b>Fisher Creek</b>	6D	Creek and all of Fisher Bay east of 103°29' on Deschambault Lake closed to all fishing March 1 to June 15	<b>Jade Lake</b>	6C	Stocked trout; open all year
<b>Flotten Lake</b>	6A	Walleye limit 3, only 1 over 55 cm	<b>Jan Lake</b>	6D	Unnamed long narrow bay on the northeast shore of the main part of Jan Lake, northeast of Busteed Island, at 54°58' 102°52'45" closed to all fishing March 1 to May 31; Brock Bay and water surrounding Harper Island from point west of Harper Island at 54°52'51" 103°0'46" to the northern most tip of Harper Island at 54°53'1" 103°0'12" to the point southeast of Harper Island at 54°52'4" 102°59'29" closed to angling March 1 to June 15
<b>Flotten River</b>	6A	Walleye limit 3, only 1 over 55 cm			
<b>Fourth Mustus Lake</b>	6A	Walleye limit 3, only 1 over 55 cm			
<b>Frobisher Lake</b>	8A	Including Simonds Channel, Walleye limit 3, only 1 over 55 cm			
<b>George Lake</b>	8B	(56°14' 106°20') CR1 limits			
<b>Gordon Lake</b>	7B	(55°50' 106°28') CR2 limits			
<b>Greig Lake</b>	6A	Walleye limit 3, only 1 over 55 cm	<b>Jean Lake</b>	8B	(56°11' 106°28') CR3 limits
<b>Gross Lake</b>	7C	(55°29' 104°36') CR3 limits	<b>Jeannette Lake</b>	6A	Walleye limit 3, only 1 over 55 cm
<b>Hackett Lake</b>	6B	Walleye limit 3, only 1 over 55 cm	<b>Jet Lake</b>	6B	Stocked trout; open all year
<b>Hanson Lake</b>	6D	See Bad Carrot Lake			

*New regulations for a specific waterbody marked in red with an asterisk (\*).*

 Indicates CR water

 Indicates stocked trout water - open all year

Please note: all dates are inclusive.

Water	Map	Special Regulation	Water	Map	Special Regulation
<b>Johannsen Lake</b>	7D	(55°38' 103°47') CR3 limits	<b>Matheson Lake</b>	6A	Walleye limit 3, only 1 over 55 cm
<b>Johnston Lake</b>	6A	Walleye limit 3, only 1 over 55 cm	<b>McCall Lake</b>	7D	(55°09' 102°23') CR3 limits
<b>Junction Lake</b>	6C	Stocked trout; open all year	<b>McCulloch Lake</b>	7D	(55°34' 103°41') CR3 limits
<b>Keeley Lake</b> (including Broad Creek to Hwy 903)	6A	Walleye limit 2, only 1 over 55 cm; pike limit 3, only 1 over 75 cm	<b>McCusker River</b>	7A	Closed to all fishing March 1 to June 30
<b>Keeley River</b>	7A	Between Jans Bay of Canoe Lake and 55°N closed to all fishing all year	<b>McEwen Lake</b>	8C	(56°09' 104°51') CR1 limits
<b>Kimball Lake</b>	6A	Walleye limit 3, only 1 over 55 cm	<b>McNichol Lake</b> (includes Barker, Devil, Otter)	7C	Walleye limit 2, only 1 over 55 cm; pike limit 3, only 1 over 75 cm
<b>Kit Lake</b>	6C	Stocked trout; open all year	<b>McRobbie Lake</b>	6E	Stocked trout; open all year
<b>Konuto Lake</b>	6D	CR1 limits; closed to all fishing April 1 to June 30	<b>Mekawap Lake</b>	7C	Stocked trout; open all year
<b>Lac des Iles</b>	6A	Walleye limit 3, only 1 over 55 cm	<b>Meadow Lake Provincial Park</b>	6A	Reduced walleye / lake trout limits; see tables for specific waters
<b>Lac la Ronge</b>	7C	CR1 limits; mandatory barbless hooks; see Montreal / Potato rivers	<b>Mercer River</b>	7B	Mercer Lake to Besnard Lake including Mercer Bay of Besnard Lake closed to angling all year
<b>Lac Ile a la Crosse</b>	7B	Walleye limit 3, only 1 over 55 cm	<b>Merritt Lake</b>	6D	See Oskikebuk River
<b>Land Lake</b>	7C	(55°25' 104°42') CR3 limits	<b>Mid Lake</b>	6D	Stocked trout; open all year
<b>Lepine Lake</b>	6A	Walleye limit 3, only 1 over 55 cm	<b>Mistohay Creek</b>	6A	Walleye limit 3, only 1 over 55 cm
<b>Lepp Lake</b>	7D	(55°13' 103°58') CR1 limits	<b>Mistohay Lake</b>	6A	Walleye limit 3, only 1 over 55 cm
<b>Lewis Lake</b>	8C	(56°09' 104°55') CR3 limits	<b>Mitchell Lake</b>	7C	(55°04' 104°21') CR3 limits
<b>Little Lake</b>	6A	Walleye limit 3, only 1 over 55 cm	<b>Moise Lake</b>	7D	Stocked trout; open all year
<b>Little Bear Lake</b>	6C	Lake trout limit 2, only 1 over 65 cm; lake trout limit 0 from September 10 to November 10	<b>Montreal Lake</b>	6C	Walleye limit 1
<b>Little Raspberry Lake</b>	6A	Stocked trout limit 3, only 1 over 43 cm; open all year	<b>Montreal River</b>	7C	Highway 2 bridge centerline to Lac la Ronge and part of Lac la Ronge closed to angling all year
<b>Lussier Lake</b>	7C	Stocked trout; open all year	<b>Mountain Lake</b>	7C	See Twin Falls
<b>Mackie Lake</b>	5C	Stocked trout; open all year	<b>Mullock Lake</b>	7C	Stocked trout; open all year
			<b>Musker Pond</b>	5C	Stocked trout limit 2; open all year

New regulations for a specific waterbody marked in red with an asterisk (\*).

 Indicates CR water


 Indicates stocked trout water - open all year

Please note: all dates are inclusive.

Water	Map	Special regulation	Water	Map	Special regulation
Muskike Lake	7D	Closed to all fishing March 1 to May 31	Palf Creek	6D	Creek and Hidden Bay of Deschambault Lake extending 1 km south and 2 km west of narrows closed to all fishing March 1 to June 15
Negan Lake	7D	Stocked trout; open all year			
Nemeiben Creek (River)	7C	(55°18.2' 105°12.2') CR1 limits	Park Lake	7D	(55°07' 103°49') CR3 limits
Nemeiben Lake (including Head Lake)	7C	CR1 limits. Limit is inclusive of fish caught on both lakes	Paull Lake	8C	(56°08' 104°48') CR3 limits
Nesootao Lake (Twin)	6A	Walleye limit 3, only 1 over 55 cm	Pear Lake	5C	Stocked trout; open all year
Nipawin Lake	5C	Stocked trout limit 3, only 1 over 43 cm; open all year	Peitahigan Lake	6A	Walleye limit 3, only 1 over 55 cm
Nipekamew Lake	6C	Pike limit 4, only 1 over 75 cm	Peltier Lake	7D	(55°34' 105°04') CR3 limits
Nisbet Pond	5C	Stocked trout limit 2; open all year	Peter Pond Lake (Big and Little)	7A	Walleye limit 3, only 1 over 55 cm; narrows from Fleury Point to Sandy Point, including Vee Bay, Kisis Channel from Peter Pond Lake to Churchill Lake and southern part of Peter Pond Lake adjacent to Niska Channel closed to all fishing March 1 to June 30
Niska Lake & Channel	7A	Closed to all fishing March 1 to June 30	Pierce Lake	6A	Walleye limit 3, only 1 over 55 cm; lake trout limit 1, which must be between 65 – 70 cm
Nistum Lake	6D	Stocked trout; open all year	Pilling Lake	7D	(55°36' 103°44') CR3 limits
Niven Lake	6A	Walleye limit 3, only 1 over 55 cm	Pine Lake	6C	Stocked trout; open all year
Nunn Lake	7C	(55°16' 105°34') CR1 limits	Pinehouse Lake	7B	All waters of an unnamed bay lying south of a straight line from a point of land at 55°21'28" 106°44'05" to the northwest point of an island at 55°21'10" 106°42'00" and from the southern tip of that island to a point of land at 55°20'24"...( <i>next page</i> )
Opal Lake	6C	Stocked trout; open all year			
Oskikebuk River	6D	From south bay of Oskikebuk Lake to narrows in west arm of Deschambault Lake at 103°42', including Merritt Lake, closed to all fishing March 1 to June 15			
Otter Creek	6A	Walleye limit 3, only 1 over 55 cm			
Otter Lake (includes Barker, Devil, McNichol)	7C	Walleye limit 2, only 1 over 55 cm; pike limit 3, only 1 over 75 cm; Rattler Bay of Otter Lake and Stewart River south of Ducker Lake closed to angling April 1 to June 15			

New regulations for a specific waterbody marked in red with an asterisk (\*).

 Indicates CR water

 Indicates stocked trout water - open all year

Please note: all dates are inclusive.

Water	Map	Special regulation	Water	Map	Special regulation
<b>Pinehouse Lake</b> <i>(continued)</i>	7B	including the Massinahigan River from Pinehouse Lake to 1 km west of the Highway 914 bridge and the Tippo River from the confluence of the Massinahigan River to 55°18'50" 106°43'40" closed to angling April 1 to May 31	<b>Rush Lake</b>	6A	Walleye limit 3, only 1 over 55 cm
			<b>Rusty Creek</b>	6A	Walleye limit 3, only 1 over 55 cm
			<b>Rusty Lake</b>	6A	Walleye limit 3, only 1 over 55 cm
			<b>Sapphire Lake</b>	6C	Stocked trout; open all year
			<b>Sand Lake</b>	6C	Stocked trout; open all year
			<b>Sandy Lake</b>	7B	Stocked trout; open all year
<b>Piprell Lake</b>	6C	Stocked trout; open all year	<b>Sealey Lake</b>	6C	Stocked trout; open all year
<b>Pointer Lake</b>	7D	(55°38' 103°45') CR3 limits	<b>Second Mustus Lake</b>	6A	Walleye limit 3, only 1 over 55 cm
<b>Potato Lake</b>	6C	Including Lower Potato Lake, closed to angling April 1 to May 31	<b>Sedge Lake</b>	6B	Stocked trout; open all year
			<b>Sergent Lake</b>	6A	Walleye limit 3, only 1 over 55 cm
<b>Potato River</b>	7C	All waters of the Potato River closed to angling April 1 to May 31, except river section east of 105°15'50" and part of Lac La Ronge within 1 km of river mouth closed to angling all year	<b>Shannon Lake</b>	6C	Stocked trout; open all year
			<b>Shirley Lake</b>	6B	Stocked trout; open all year
			<b>Singh Lake</b>	6C	Stocked trout; open all year
			<b>Smoothstone Lake</b>	6B	Walleye limit 1
<b>Pow Lake</b>	7D	Closed to all fishing March 1 to May 31	<b>Smoothstone River</b>	7B	River section from 55°18'30" 106°37'30" to Pinehouse Lake and part of Pinehouse Lake within a 2 km radius of the Smoothstone River mouth closed to angling April 1 to June 20
<b>Primrose Lake</b>	6A	Closed to angling all year			
<b>Propp Lake</b>	7C	(55°42' 104°09') CR3 limits	<b>Snell Lake</b>	6B	Stocked trout; open all year
<b>Puskwakau River</b>	6D	All waters of the Puskwakau River closed to all fishing March 1 to June 15 (see Ballantyne Bay)	<b>Stanley Lake</b>	6A	Walleye limit 3, only 1 over 55 cm
			<b>Stapleford Lake</b>	7C	(55°31' 105°08') CR3 limits
<b>Ranger Lake</b>	5C	Stocked trout; open all year	<b>Stewart Lake</b>	7C	(55°34' 105°33') CR3 limits
<b>Redmond Lake</b>	6A	Walleye limit 3, only 1 over 55 cm	<b>Stewart River</b>	7C	See Otter Lake
<b>Ridge Lake</b>	6C	Stocked trout; open all year	<b>Stratton Lake</b>	7C	(55°31' 105°05') CR3 limits
<b>Road Lake</b>	6C	Stocked trout; open all year	<b>Sturgeon Weir River</b>	6D	South of Highway 106, ....(next page)
<b>Round Lake</b> (53°20' 106°02')	5B	Perch limit 25, only 10 may exceed 25 cm			

New regulations for a specific waterbody marked in red with an asterisk (\*).

 Indicates CR water

 Indicates stocked trout water - open all year

Please note: all dates are inclusive.

Water	Map	Special regulation	Water	Map	Special regulation
<b>Sturgeon Weir River</b> <i>(continued)</i>	6D	including Attree Lake and part of Amisk Lake near river mouth, closed to angling October 1 to May 31	<b>Unnamed Lake</b> (Luttge)	7C	(55°32' 105°30') CR3 limits.
			<b>Unnamed Lake</b> (Leuzinger)	7C	(55°32' 105°30') CR3 limits
<b>Swanson Lake</b>	8B	(56°10' 106°20') CR3 limits	<b>Unnamed Lake</b> (Nice)	6A	(54°33' 108°35') walleye limit 3, only 1 over 55 cm
<b>Tatukose Creek</b>	6A	Walleye limit 3, only 1 over 55 cm			
<b>Ted's Lake</b>	6B	Stocked trout; open all year	<b>Unnamed Lake</b> (Two Williams)	7C	(55°28' 105°13') CR3 limits
<b>Terra Lake</b>	6B	Stocked trout; open all year			
<b>Third Mustus Lake</b>	6A	Walleye limit 3, only 1 over 55 cm	<b>Unnamed Lake</b> (Vermont)	7C	(55°27' 105°32') CR3 limits
<b>Tobin Lake</b>	5D	E.B. Campbell Dam to Francois Finley Dam, including the Petaigan River: walleye/sauger limit 3 (combined), only 1 over 86 cm, none may be between 55-86 cm; pike limit 4, only 1 over 115 cm, none may be between 75-115 cm; mandatory barbless hooks; closed to angling April 1 to May 14	<b>Unnamed Lake</b> (Wildgoose)	6C	(55°29' 105°25') CR3 limits
			<b>Unnamed Lake</b> (Wood Duck)	6C	(55°30' 105°28') CR3 limits
			<b>Unnamed Lake</b> (Woody)	6C	(55°25' 105°28') CR3 limits
			<b>Unnamed Lake</b>	6A	(54°27' 108°35') walleye limit 3, only 1 over 55 cm
			<b>Unnamed Lake</b>	6A	(54°28' 108°39') walleye limit 3, only 1 over 55 cm
<b>Torch Lake</b>	5C	Walleye limit 3; only 1 over 50 cm; closed to angling April 1 to June 15			
<b>Turvey Lake</b>	6A	Walleye limit 3, only 1 over 55 cm	<b>Unnamed Lake</b>	7D	(55°08' 102°23') CR3 limits
<b>Twin Falls</b>	7C	From the westerly tip of the island upstream and the bay located downstream of Twin Falls to the southwest tip of Eyinew Island, including Early Bay, closed to angling April 1 to June 15	<b>Unnamed Lake</b>	7D	(55°10' 102°21') CR3 limits
			<b>Unnamed Lake</b>	7D	(55°13'54" 103°03'48") closed to angling April 1 to May 31
			<b>Unnamed Lake</b>	7D	(55°13'57" 103°04'03") closed to angling April 1 to May 31
			<b>Unnamed Lake</b>	7D	(55°19'30" 102°35') CR3 limits
<b>Unnamed Lake</b> (Eva)	7C	(55°31' 105°31') CR3 limits	<b>Unnamed Lake</b>	7C	(55°46' 105°26') CR3 limits
<b>Unnamed Lake</b> (Heika)	7C	(55°32' 105°29') CR3 limits	<b>Unnamed Lake</b>	7C	(55°46' 105°34') CR3 limits

New regulations for a specific waterbody marked in red with an asterisk (\*).

 Indicates CR water

 Indicates stocked trout water - open all year

Please note: all dates are inclusive.

Water	Map	Special regulation	Water	Map	Special regulation
Unnamed Lake	7B	(56°11' 106°21') CR3 limits	Waterhen Lake	6A	Walleye limit 3, only 1 over 55 cm
Vivian Lake	6A	Stocked trout; open all year	Waterhen River	6A	Walleye limit 3, only 1 over 55 cm; lake trout limit 2, only 1 over 65 cm
Wapawekka Lake	6C	Walleye limit 2, only 1 over 55 cm, all creeks and associated lakes flowing into Horn Bay (54°55' 104°07') of Wapawekka Lake and Horn Bay from 54°55'26" east to the western tip of an island at 54°55'27" 104°7'13" and from the eastern tip of that island south to the mainland at 54°55'17" 104°06'56" and the creek that flows into Radar Bay (54°56' 104°24') of Wapawekka Lake and the portion of Radar Bay east of 104°20'25" closed to angling March 1 to June 15	Wells Lake	7C	(55°33' 105°37') CR3 limits
			Weyakwin Lake	6C	Walleye limit 3, only 1 over 55 cm
			Whiteswan Lakes	6C	Lake trout limit 1; Whelan Bay closed to angling September 10 to November 10
			Wood Lake	7D	Including Grassy Narrows closed to all fishing March 1 to May 31
			Wye Lake	6A	Walleye limit 3, only 1 over 55 cm
			Wykes Lake	7D	(55°32' 103°33') CR3 limits
			Zander Lake	8A	(56°39' 108°05') CR3 limits

New regulations for a specific waterbody marked in red with an asterisk (\*).

## Ice thickness guidelines

Any activity on ice comes with a risk. Test the ice thickness and follow these guidelines to determine if it is safe to proceed.



4" (10 cm)

one person



8" (20 cm)

snowmobile



12" (30 cm)

automobile  
(approx. 2000 kg)

12"+ (&gt;30 cm)

heavy truck

Please remember these are guidelines only. Ice conditions often change rapidly and can present serious safety risks. Visit [saskatchewan.ca/fishing](https://saskatchewan.ca/fishing) for more information on ice safety.