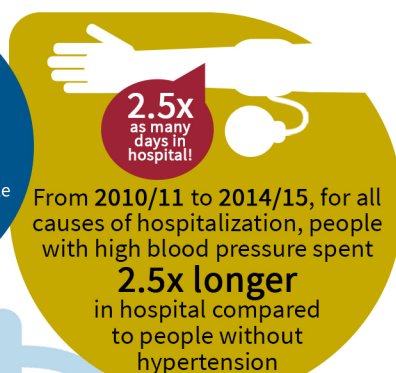
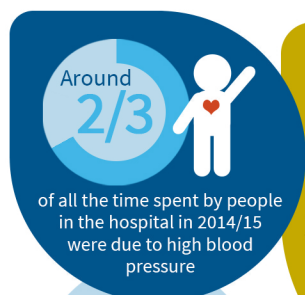
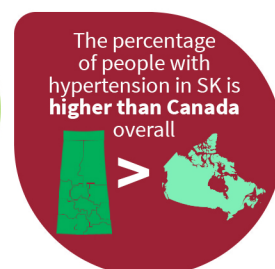
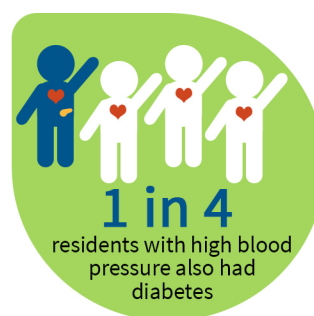
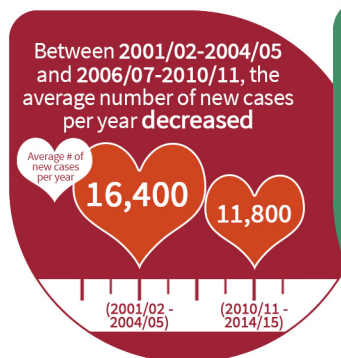
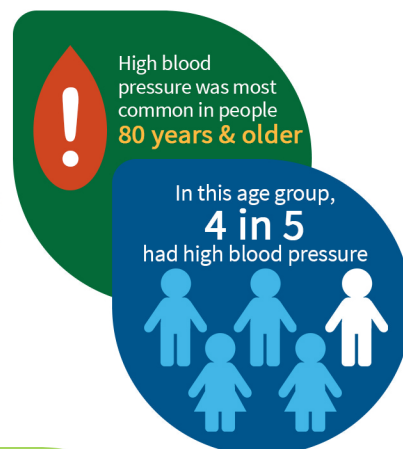
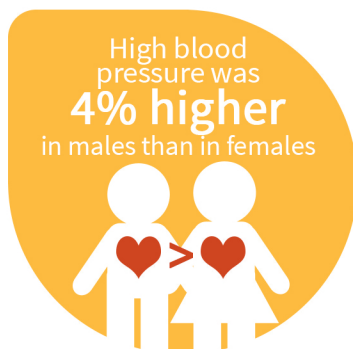


Hypertension or High Blood Pressure in SK (2014/15)

BLOOD PRESSURE is a measure of how hard the blood pushes against the walls of the arteries as it moves through the body. It's normal for blood pressure to go up and down during the day, but if it stays high for a long time, this force can damage the heart and blood vessels.



Prevalence (%) of
hypertension in **former
health regions**
compared to the
province in 2014/15

- more common than
SK (statistically
significant)
- not significantly
different than SK
- less common than
SK (statistically
significant)

NOTE: Percentages assume
a standardized Canada 2011
age distribution for each
area and are for
comparison only

