

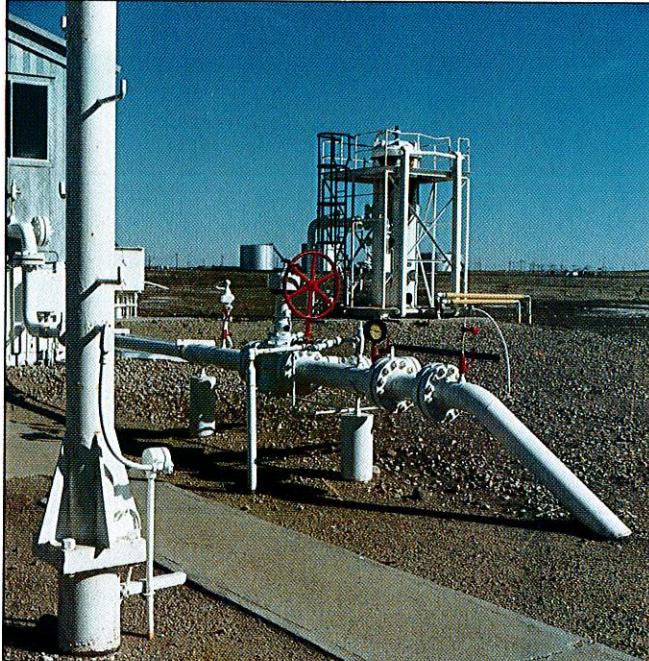


Government of
Saskatchewan

Bureau of Statistics

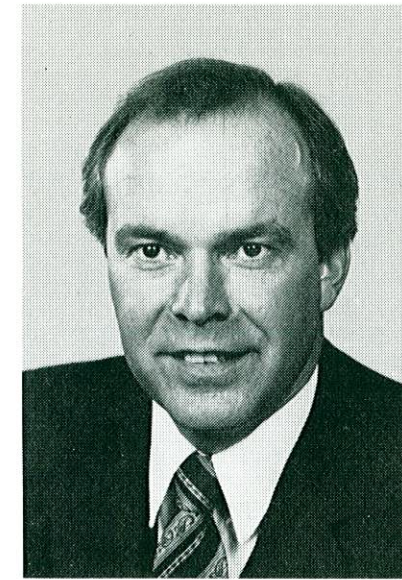
Economic Review 1985

Number Thirty-Nine



Saskatchewan

Foreword



The Saskatchewan economy posted good growth in 1985 despite generally difficult conditions. The last two years have been trying times for Saskatchewan. Low commodity prices, rising international competition and two severe droughts conspired to dampen the economic performance of the province. Yet this year's **Annual Economic Review** shows clearly that, in spite of these set backs, Saskatchewan people working in partnership with their government, continued to build and expand the economy.

Saskatchewan farmers harvested a crop which was 17 percent above last year's production, exceeding the five-year production average. The government worked with farmers to alleviate environmental and cash flow problems by bringing forward programs to deal with grasshoppers, drought, and cash starved livestock producers.

In 1985, the economy of the province continued to expand as the governments of Saskatchewan and Canada signed the Western Energy Accord and a new gas pricing agreement. In addition, investment in the oil patch continued at a vigorous rate in direct response to the extension of the provincial Oil Royalty-Tax Incentive Program and the announcement that the province will move toward natural gas self-sufficiency by the early 1990s.

These policies have helped to create new jobs and to push employment in the province to an all time high. Saskatchewan's unemployment rate in 1985 was one of the lowest in Canada. In September, we announced the construction of a 50,000 barrel-a-day heavy oil upgrader in Regina. This \$650 million project will create an estimated 3,000 person years of construction employment. Expanding employment should continue to lower the unemployment rate in 1986, a trend which began in mid-1985.

My government remains committed to programs and initiatives which assist, encourage and promote sound, dynamic economic growth, realizing we have the capacity and the will to seize opportunity in a growing Saskatchewan.

A handwritten signature in cursive script that reads "Grant Devine".

Grant Devine
Premier

Economic Review 1985

Table of Contents

	<i>Page</i>
<i>Foreword</i>	1
<i>Economic Indicators, Saskatchewan</i>	4
<i>1985 in Review</i>	5
<i>Statistical Tables and Charts</i>	9
<i>Economic Accounts</i>	32

December 1985

Saskatchewan Bureau of Statistics,
Walter Scott Building,
3085 Albert Street,
Regina, Saskatchewan.
(306) 787-6327

Economic Indicators, Saskatchewan

	1978	1979	1980	1981	1982	1983	1984
Personal Income —Millions of Dollars							
Wages, Salaries and Supplementary Labour Income . . .	3,932	4,482	5,176	5,972	6,536	6,946	7,367
Net Income Received by Farm Operators from Farm Production	901	811	639	1,606	1,069	658	311
Other Income	2,227	2,641	3,075	3,870	4,525	4,820	5,296
Total Personal Income	7,060	7,934	8,890	11,448	12,129	12,425	12,974
Population and Labour Force —Thousands of Persons							
Saskatchewan Population as of June 1	943.5	951.3	959.4	968.3	979.1	993.6	1,008.8
Saskatchewan Labour Force	418	428	437	446	455	470	477
Saskatchewan Employed	398	411	417	425	426	436	439
Saskatchewan Unemployed	20	18	19	21	28	35	38
Saskatchewan Per Cent Unemployed	4.9	4.2	4.4	4.7	6.2	7.4	8.0
Canada Per Cent Unemployed	8.3	7.4	7.5	7.5	11.0	11.9	11.3
Consumer Price Index —Annual Percentage Increase							
Regina	9.0	8.4	10.1	11.7	9.0	6.4	4.4
Saskatoon	7.8	8.9	10.5	11.7	9.0	6.3	3.5
Canada	8.8	9.2	10.2	12.5	10.8	5.8	4.4
Gross Domestic Product by Industry —Millions of Dollars							
Agriculture	1,703	1,713	1,966	2,352	2,398	1,985	1,530
Forestry	19	22	25	26	26	37	42
Mining	819	1,025	1,465	1,466	1,129	1,574	2,129
Construction	504	613	689	780	715	821	761
Manufacturing	532	645	793	955	866	825	927
Transportation, Communication and Storage	727	818	911	1,019	1,089	1,167	1,285
Utilities	220	256	260	298	364	375	439
Trade	895	1,048	1,198	1,403	1,472	1,484	1,564
Finance, Insurance and Real Estate	1,236	1,346	1,590	1,715	1,892	2,497	2,714
Services	1,465	1,680	1,950	2,230	2,485	2,635	2,866
Public Administration	788	873	1,024	1,308	1,468	1,567	1,679
Total G.D.P. at Factor Cost	8,907	10,039	11,872	13,550	13,905	14,968	15,936
Value of Mineral Sales —Millions of Dollars							
Oil	689.3	726.7	862.4	821.0	1,189.4	1,650.8	1,870.0
Potash	495.7	733.3	1,009.7	995.1	642.9	685.9	829.4
Uranium	261.5	258.0	232.2	258.3	250.5	121.4	353.7
Other	128.1	158.4	180.0	194.5	220.4	256.3	291.2
Total	1,574.6	1,876.4	2,284.3	2,268.9	2,303.2	2,714.4	3,344.3
Volume							
Oil—Thousands of m ³	9,623	9,362	9,313	7,409	8,128	9,526	10,800
Potash—Thousands of tonnes	6,453	7,146	7,127	6,357	5,087	6,599	6,998
Uranium—Thousands of Kg	4,474	3,255	2,774	3,123	3,213	1,621	5,851
Other							
Private and Public Investment—Millions of Dollars							
New Capital Investment							
Construction	1,349.5	1,752.9	1,874.0	2,192.1	2,057.9	2,230.9	2,291.6
Machinery and Equipment	1,043.1	1,350.7	1,450.5	1,835.2	1,434.1	1,514.1	1,521.6
Total New Capital Investment	2,392.6	3,103.6	3,324.5	4,027.3	3,492.0	3,745.0	3,813.2
Repair and Maintenance	678.2	795.7	986.4	1,123.8	1,178.1	1,227.6	1,346.6
Total Private and Public Investment	3,070.8	3,899.3	4,310.9	5,151.1	4,670.1	4,972.6	5,159.8
Value of Manufacturing Shipments —Millions of Dollars							
Value of Retail Trade—Millions of Dollars	2,874	3,202	3,453	3,876	4,042	4,357	4,354
Housing Starts—Units	9,527	11,742	6,250	5,972	6,822	7,269	5,221
Electric Power Generated—GWH	8,862	9,118	9,203	9,683	9,846	10,389	11,546

Source: Saskatchewan Bureau of Statistics
Saskatchewan Department of Energy and Mines
Statistics Canada

Note: Components may not add to total due to rounding

1985 in Review

Output, Employment and Prices

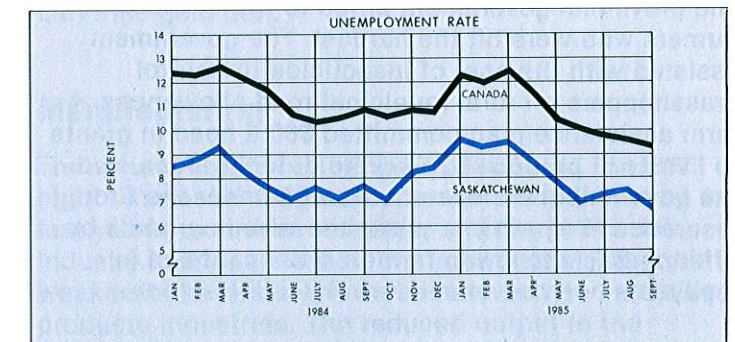
Agricultural output grew in 1985 in spite of some of the worst conditions in years: untimely rain at seeding time, grasshoppers, a second year of drought during the peak growing months, and, finally, snow forcing farmers to leave swathed grain in the fields for up to six weeks. In late October, however, the sun shone and farmers virtually completed the 1985 harvest.

Increased activity in the oil patch provided the stimulus for rising capital investment in the province in 1985. Record levels of drilling took place as oil companies responded to changed government policies. New capital investment in agriculture, however, continued at levels far below those reached in the 1980s. Other sectors maintained the investment pace of 1984.

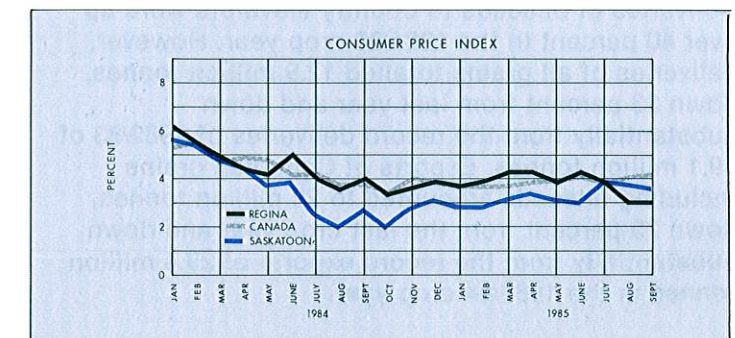
The Saskatchewan unemployment rate averaged 8.0 percent for the first eleven months of 1985 - one of the lowest in the country and substantially below the Canadian average. Employment expanded by 13,000 or close to three percent in the first eleven months of the year.

New jobs were created in all non-agriculture sectors except public administration. Agricultural employment declined by 4,000 due to the drought. Mining, manufacturing and construction, meanwhile, all created jobs at a faster pace than the overall economy. Increased retail trade provided the stimulus to all service sectors to employ an additional 12,000 persons this year. Overall

employment in Saskatchewan rose about 13,000 over the first eleven months of 1985.

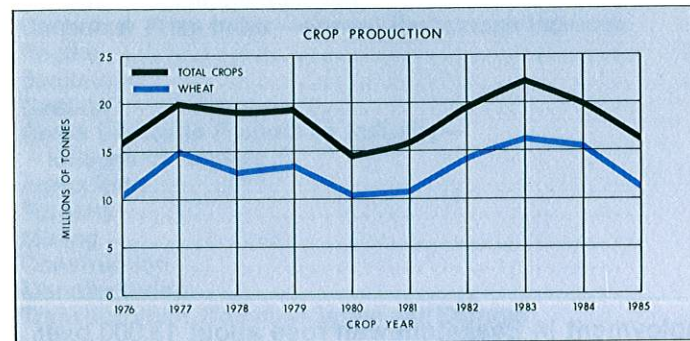


Inflation, as measured by the Consumer Price Index (CPI) continued to fall in 1985. In 1982 the average increase in the CPI for Regina and Saskatoon was nine percent. By 1985 this increase had been slowed to less than four percent. Inflation at the national level has also continued to slow and for the first time since 1971 fell below four percent.



Agriculture

Saskatchewan farmers were plagued with environmental hazards in 1985: grasshoppers, drought, rain and snow. The adverse harvesting conditions reduced the quality of the crop. Less than 60 percent of total wheat production is expected to fall into the top two grades (compared with 75 percent over the past ten years). The 1985 Saskatchewan crop production of the six major grains and oilseeds managed to exceed the five year production average of 18.8 million tonnes. The 1985 harvest is estimated to be 19.1 million tonnes, up from the 1984 harvest of 16.3 million tonnes.



The provincial government acted to assist those farmers who were hit the hardest. The government assisted with the cost of insecticide to control grasshoppers on rural municipal road allowances. A farm assistance plan committed \$60 a head in grants to livestock producers in severe drought areas, and the government increased coverage under the Crop Insurance Program and protected breeding herds by offering Saskatchewan farmers \$125 per head in repayable cash advances for retained livestock.

Saskatchewan also began work with the farm organizations and with the federal government to develop a new National Agriculture Policy that will include a long-term disaster plan. Finally, farmers throughout Saskatchewan were given the opportunity to take advantage of lower priced natural gas to dry their grain through a program which provided free hook-up to Sask Power's rural natural gas system.

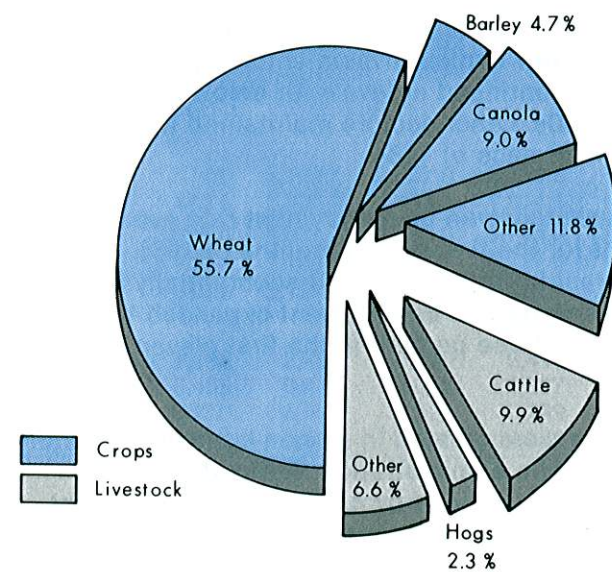
Deliveries of oilseeds to country elevators were up over 40 percent in the 1984/85 crop year. However, deliveries of all grains totalled 12.9 million tonnes, down 23 percent from last year and down substantially from the record deliveries of 1982/83 of 19.1 million tonnes. Exports of Canadian grains including oilseeds amounted to 22 million tonnes, down 25 percent from the last crop year and down substantially from the record exports of 29.4 million tonnes in the 1983/84 crop year.

World stocks of all grains and oilseeds are forecast to rise about 60 million tonnes during 1985/86 due mainly to increased production in both exporting and importing countries. This world-wide excess supply has put downward pressure on grain prices and Canadian export opportunities, exacerbating the already serious cost-price squeeze for farmers.

In the first nine months of 1985 producer marketings of hogs were up 7.3 percent over the same period last year. Prices for Index 100 hogs remained steady on average. Prices weakened in the earlier part of the year, however, when the U.S. government imposed a countervailing duty on Canadian hog imports. Net provincial stabilization payments for hogs nearly doubled from 1984 to \$11 million in the first three quarters of 1985. There was a 4.5 percent increase in the number of pigs on farms on July 1, 1985.

Agriculture Canada estimated that farm cash receipts will decline 4 percent in 1985 to about \$4.2 billion. Total cash receipts would have fallen even lower had there not been a \$295 million payout from the Western Grain Stabilization Fund and crop insurance payments of \$300 million. Although both these sums contain payments due from the previous year they are off-set by coverage earned this year but not paid until 1986. Total farm expenses rose moderately in 1985 leaving farmers an estimated realized net income of \$830 million, down from \$1.1 billion in 1984.

Distribution of Farm Cash Receipts by Commodity, Saskatchewan, 1984



Mining

Investment in the oil patch continued at a vigorous rate in 1985 as a record number of wells were drilled. The investment was in direct response to the provincial government's extension of the Oil Royalty-Tax Incentive Program and the announcement of the government's policy to move the province towards natural gas self-sufficiency by the early 1990s. The governments of Saskatchewan and Canada also signed the Western Energy Accord and a new gas pricing agreement, thereby removing some of the uncertainty in the market. These policies helped create 4,000 new jobs and added over \$285 million in incremental revenues to the provincial treasury. In September of 1985 the government announced that construction would proceed on a 50,000 barrel-a-day heavy oil upgrader in Regina. This \$650 million project will create an estimated 3,000 person-years of construction employment and 80 permanent jobs at the upgrader.

The production of oil in Saskatchewan rose marginally for the first half of 1985. The oil and gas industry had a banner year as government policies were in place to stimulate capital investment in drilling activity. Total wells drilled in 1985 reached a record of 3,551 as of the end of November, up from last year's record of 2,970 wells. Oil companies bid a record \$148.6 million for drilling rights at the four sales in 1985, up from \$123.1 million for 1984. The recent drilling surge has resulted in a steady rise in proven reserves in the province since 1982.

Potash production fell by over 20 percent in 1985 in response to growing inventories caused by slack demand. Most importantly, China, which purchased about 450,000 tonnes of potash from Saskatchewan in 1984, did not buy any potash in 1985. World-wide declines in agriculture prices also discouraged farmers from purchasing potash for fertilizer. This in turn substantially reduced the unit price for potash received by Saskatchewan mines. Even with a downturn in potash production Saskatchewan mines continue to receive new capital investment to expand their existing facilities. The Lanigan phase II and

Kalium expansions continued during the year. The Potash Corporation also announced that a feasibility study is being conducted for a 300,000 tonne per annum potassium sulphate fertilizer plant to be located near Big Quill Lake.

Uranium production rose more than 14 percent in the first six months of 1985 following a three-fold increase in total production in 1984. This increased production was made possible through the capacity added by the Key Lake mine coming on stream in 1984. Prices for uranium firmed up in 1985 and are about seven percent higher than average prices received in 1984.

Coal production and prices were up marginally in 1985 reflecting the increased demand for coal generated electricity.

Gold exploration and activity increased in 1985 with the announcement of the Star Lake mine. This project alone will mean the creation of 75 immediate new jobs in the mining industry. Production, of about 33,000 ounces of gold per year, is slated for April, 1987. Saskatchewan Mining Development Corporation also announced an agreement for accelerated gold exploration on a large area of the LaRonge gold belt.

Manufacturing

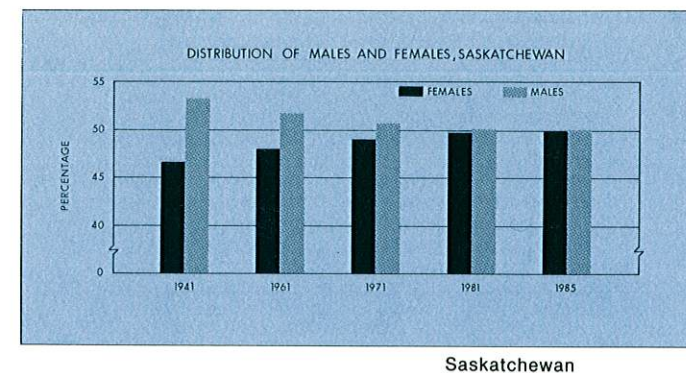
The value of manufacturing shipments for the first eight months of 1985 was approximately the same as last year's record level despite a strike in the dairy industry and weakness in the farm sector. The main weaknesses were in the machinery and non-metallic products industries. The reduced output in the agricultural machinery industry was a direct result of the poor conditions in the agricultural sector. Lower output in the non-metallic products industry reflects the softness of the construction industry. Nevertheless, shipments rose to record levels in the food, printing and publishing industries. Employment was an average 2,000 higher for the first eleven months of the year.

Statistical Tables
and Charts

List of Statistical Tables and Maps

Table	Page	Table	Page
Population			
1. Population, Canada and Saskatchewan by Sex	11	35. Number and Average Size of Farms, Saskatchewan	21
2. Births, Deaths, Natural Increase and Immigration, Saskatchewan	11	36. Current Values of Farm Capital, Saskatchewan	21
3. Distribution by Age Groups, Saskatchewan	11	37. Farm Cash Receipts and Net Income	21
4. Urban, Rural and Farm Population, Saskatchewan	11	38. Farm Operating Expenses and Depreciation Charges, Saskatchewan	22
5. City Population, Saskatchewan	12	39. Acreage Sown to Wheat, Saskatchewan	22
6. Percentage Distribution of Population by Place of Residence	12	40. Average Wheat Yields, Saskatchewan	23
7. Saskatchewan Population 65 and Over by Place of Residence	12	41. Production of Field Crops, Saskatchewan	23
8. Percentage Population 65 and Over, Saskatchewan	12	42. Producer Grain Marketings, Saskatchewan	23
Labour			
9. Labour Force, Canada, Saskatchewan	13	43. Farm Price of Grains, Saskatchewan	24
10. Employed by Industry, Saskatchewan	13	44. Outstanding Farm Debt, Saskatchewan	24
11. Average Hourly Earnings, Saskatchewan Alberta, Manitoba, Canada	13	45. Livestock Marketings by Crop District, Saskatchewan	24
12. Average Weekly Hours, Saskatchewan, Alberta, Manitoba, Canada	14	46. Livestock Marketings, Saskatchewan	25
13. Average Weekly Wages and Salaries, Saskatchewan, Alberta, Manitoba, Canada	14	47. Livestock Population, Saskatchewan	25
Business Indicators			
14. Retail Trade, Saskatchewan, Alberta, Manitoba, Canada	15	48. Saskatchewan Grain Exports by Destination	25
15. New Motor Vehicle Sales, Saskatchewan	15	49. Oilseeds Marketings, Saskatchewan	25
16. Retail Trade by Kind of Business, Saskatchewan	15	Travel	
17. Value of Building Permits Issued for Construction, Saskatchewan, Regina, Saskatoon	15	50. Saskatchewan Receipts from Out of Province	26
18. Consumer Price Indexes, Canada, Regina and Saskatoon	16	51. Air Traffic — Inbound and Outbound Passengers, Regina, Saskatoon	26
19. Indexes of Farm Prices and Farm Costs	16	52. Visitations at Provincial Parks and Recreation Areas, Saskatchewan	26
20. Industry Selling Price Indexes, Canada	16	53. United States Visitors Entering Saskatchewan	26
General Economic Indicators			
21. Private and Public Investment by Industry, Saskatchewan	17	Miscellaneous	
22. Value of Mineral Sales, Saskatchewan	17	54. Income Tax Statistics by Age Group, Saskatchewan, Canada	27
Non-Agricultural Industries			
23. Construction Industry, Saskatchewan	18	55. Source of Income, Principal Cities, Saskatchewan	27
24. Construction by Type of Structure, Saskatchewan	18	56. Taxpayers by Income Classes, Saskatchewan	28
25. New Dwelling Starts and Completions, Saskatchewan, Alberta, Manitoba, Canada	18	57. Provincial Highways by Surface Type, Saskatchewan	28
26. New Dwelling Units Started by Type, Saskatchewan	18	58. Electric Energy Statistics, Saskatchewan	28
27. Manufacturing Industry, Saskatchewan	19	59. Cheques Cashed in Clearing Centres, Saskatchewan	28
28. Manufacturing by Industry Group, Saskatchewan	19	60. Total Receipts and Locations for Major Accommodation Groups, Saskatchewan	29
29. Crude Oil Statistics, Saskatchewan	19	61. Net Sales of Selected Petroleum Products, Saskatchewan	29
30. Principal Markets for Saskatchewan Crude Oil	19	62. Motor Vehicle Registrations, Saskatchewan	29
31. Mining Investment, Saskatchewan	20	63. Telephone Statistics, Saskatchewan	29
32. Volume of Mineral Sales, Saskatchewan	20	Maps	
33. Value of Potash Exports, Canada	20	Saskatchewan by Crop Districts	30
34. Value of Forest Products, Saskatchewan	20	Saskatchewan Census Divisions	31
Saskatchewan Economic Accounts			
Tables 1 - 28			35

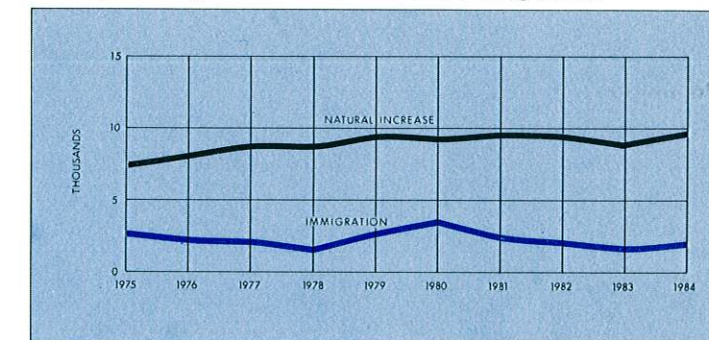
Table 1: Population, Canada and Saskatchewan by Sex.



As at June 1	Canada	Total	Male	Female
1901	5,371,315	91,279	49,431	41,848
1911	7,206,643	492,432	291,730	200,702
1921	8,787,949	757,510	413,700	343,810
1931	10,376,786	921,785	499,935	421,850
1941	11,506,655	895,992	477,563	418,429
1951	14,009,429	831,728	434,568	397,160
1956	16,080,791	880,665	458,428	422,237
1961	18,238,247	925,181	479,564	445,617
1966	20,014,880	955,344	489,040	466,304
1971	21,568,310	926,245	470,720	455,525
1976	22,992,605	921,325	464,770	456,550
1981	24,341,700	968,300	486,100	482,200
1982	24,631,800	979,100	490,700	488,400
1983	24,884,500	993,600	497,800	495,800
1984	25,123,600	1,008,800	505,400	503,400
1985	25,358,600	1,019,500	510,200	509,300

Source: Statistics Canada, Census of Canada; 91-512, Population 1921-1971, Revised Annual Estimates of Population; 91-202, Estimated Population by Sex and Age Group, for Canada and the Provinces.

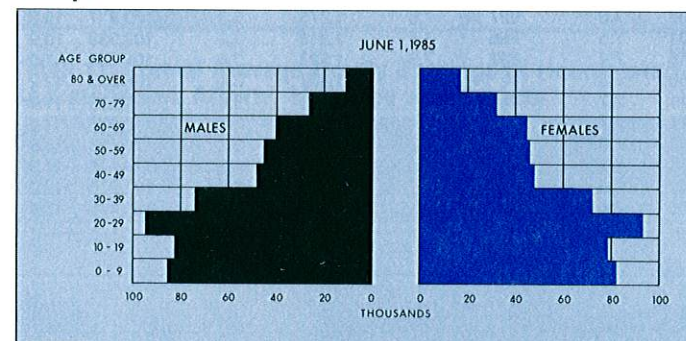
Table 2: Population, Saskatchewan Births, Deaths, Natural Increase and Immigration



Year	Live Births	Deaths	Natural Increase	International Immigration
1969	17,592	7,492	10,100	2,492
1970	16,443	7,472	8,971	1,709
1971	16,054	7,413	8,641	1,426
1972	15,473	7,590	7,883	1,511
1973	14,806	7,646	7,160	1,866
1974	15,118	7,814	7,304	2,244
1975	15,265	7,672	7,593	2,837
1976	15,969	7,809	8,160	2,323
1977	16,547	7,594	8,953	2,231
1978	16,550	7,749	8,801	1,564
1979	16,944	7,369	9,575	2,762
1980	17,057	7,651	9,406	3,604
1981	17,209	7,523	9,686	2,402
1982	17,722	8,202	9,520	2,125
1983	16,300	7,410	8,890	1,735
1984	17,760	7,980	9,780	2,150

Source: Statistics Canada, 84-204, 84-001 Vital Statistics, Canada Dept. of Manpower and Immigration, Immigration Statistics and Immigration.

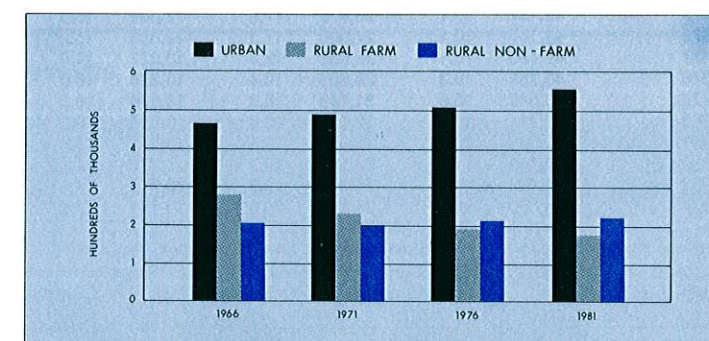
Table 3: Population, Saskatchewan Distribution by Age Groups



Age Group	June 1, 1976		June 1, 1981		June 1, 1985	
	'000	%	'000	%	'000	%
0-9	152.7	16.6	158.8	16.4	167.5	16.4
10-19	192.2	20.9	174.7	18.0	160.6	15.7
20-29	146.5	15.9	170.2	17.6	187.4	18.4
30-39	96.1	10.4	118.7	12.3	145.5	14.3
40-49	93.4	10.1	90.7	9.4	95.5	9.4
50-59	95.3	10.3	94.5	9.7	91.5	9.0
60-69	77.6	8.4	83.8	8.7	85.5	8.4
70-79	44.4	4.8	51.9	5.4	58.7	5.7
80 +	23.1	2.5	24.6	2.5	27.6	2.7
Total	921.3	100.0	968.3	100.0	1,019.5	100.0
0-14	248.0	26.9	238.6	24.6	246.8	24.2
15-64	571.1	62.0	613.2	63.4	646.1	63.4
65 +	102.2	11.1	116.1	12.0	126.9	12.4

Source: Statistics Canada, Census of Canada and 91-202, Estimated Population by Sex and Age Group for Canada and Provinces. Note: Figures may not add to total due to rounding.

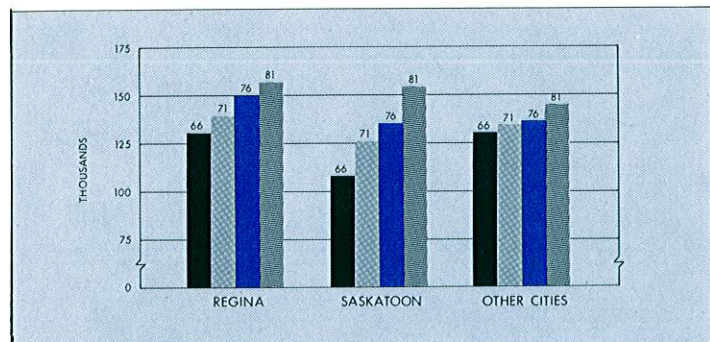
Table 4: Population, Saskatchewan Urban, Rural and Farm



As at June 1	Rural				
	Total	Urban ¹	Total	Farm	Non-farm
1961	925,181	398,091	527,090	304,672	222,418
1966	955,344	468,327	487,017	279,642	207,375
1971	926,245	490,635	435,610	233,335	202,275
1976	921,325	511,330	409,995	192,570	217,425
1981	968,313	563,166	405,147	180,255	224,892
% Changes					
1961-66	+ 3.3	+ 17.6	- 7.6	- 8.2	- 6.8
1966-71	- 3.0	+ 4.8	- 10.6	- 16.6	- 2.5
1971-76	- 0.5	+ 4.2	- 5.9	- 17.5	+ 7.5
1976-81	+ 5.1	+ 10.0	- 1.2	- 6.4	+ 3.4

Source: Statistics Canada, Census of Canada.

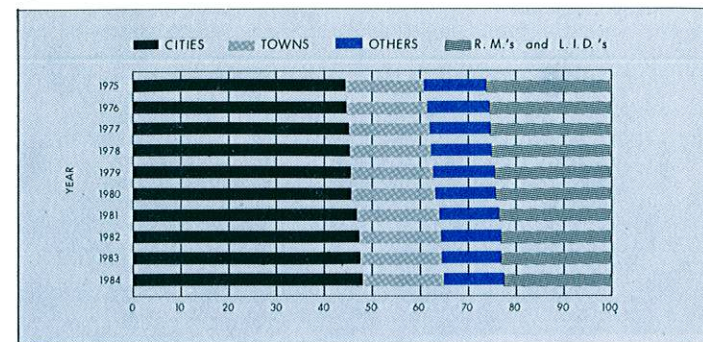
Table 5: City Population, Saskatchewan



City	1966	1971	1976	1981	Percentage Change 1971-1981
Regina	131,127	139,479	149,593	162,984	+ 16.6
Saskatoon	115,892	126,449	133,750	154,210	+ 21.9
Moose Jaw	33,417	31,854	32,581	33,941	+ 6.6
Prince Albert	26,269	28,464	28,631	31,380	+ 10.2
Swift Current	14,485	15,415	14,264	14,747	- 4.3
North Battleford	12,262	12,698	13,158	14,030	+ 10.5
Yorkton	12,645	13,430	14,119	15,339	+ 14.2
Estevan	9,062	9,150	8,847	9,174	+ 0.3
Weyburn	9,000	8,815	8,892	9,523	+ 8.0
Melville	5,690	5,375	5,149	5,092	- 5.3
Melfort	4,386	4,735	5,411	6,010	+ 26.9
Lloydminster	3,304	3,953	4,493	6,034	+ 52.6
Total	377,539	399,817	418,888	462,464	+ 15.7

Source: Statistics Canada, Census of Canada.

Table 6: Percentage Distribution of Population by Place of Residence



Year	Place of Residence					
	City	Town	Village	R.M.	L.I.D.	Reservation
1969	41.1	15.2	9.6	29.4	1.4	3.3
1970	41.6	15.3	9.5	28.7	1.4	3.5
1971	42.1	15.3	9.4	28.2	1.4	3.6
1972	42.8	15.2	9.2	27.7	1.4	3.7
1973	43.2	15.2	9.0	27.3	1.4	3.9
1974	43.9	15.7	9.2	25.8	1.3	4.1
1975	44.7	16.1	8.8	24.9	1.3	4.2
1976	44.9	16.4	8.9	24.5	1.1	4.2
1977	45.3	16.7	8.5	24.6	0.8	4.1
1978	45.4	16.7	8.6	25.2	—	4.1
1979	45.5	17.2	8.6	24.5	—	4.2
1980	45.8	17.2	8.5	24.2	—	4.3
1981	47.0	16.9	8.1	23.6	—	4.4
1982	47.5	16.7	8.1	23.2	—	4.5
1983	47.6	16.8	7.8	23.2	—	4.6
1984	48.2	16.7	7.8	22.6	—	4.7

Source: Saskatchewan Hospital Services Plan Annual Covered Population Reports.

Table 7: Saskatchewan Population 65 and Over by Place of Residence

Year	Cities		Towns		Villages		R.M.'s		L.I.D.'s		Indian Bands		Province	
	Number	%	Number	%	Number	%	Number	%	Number	%	Number	%	Number	%
1973	39,342	9.9	23,676	16.9	12,623	15.2	21,888	8.7	1,010	7.9	1,244	3.4	99,783	10.8
1974	40,669	10.0	24,728	17.1	12,573	14.9	20,133	8.4	956	7.8	1,255	3.3	100,314	10.9
1975	42,137	10.1	26,870	17.9	12,600	15.3	17,608	7.6	927	7.6	1,275	3.3	100,417	10.9
1976	43,107	10.1	27,899	17.9	12,858	15.2	17,421	7.5	785	7.7	1,318	3.3	103,388	10.9
1977	44,190	10.1	28,932	18.0	13,027	16.0	17,556	7.4	597	7.8	1,328	3.4	105,630	11.0
1978	45,352	10.3	29,851	18.4	13,395	16.0	18,280	7.5	—	—	1,357	3.4	108,235	11.2
1979	46,840	10.5	31,148	18.5	13,576	16.2	18,311	7.7	—	—	1,410	3.4	111,285	11.4
1980	48,214	10.7	32,128	19.0	13,806	16.5	18,374	7.7	—	—	1,452	3.4	113,974	11.6
1981	50,685	10.9	32,383	19.3	13,521	16.8	18,680	8.0	—	—	1,454	3.3	116,723	11.8
1982	52,168	11.0	33,083	19.7	13,774	17.2	18,975	8.2	—	—	1,485	3.3	119,485	11.9
1983	53,459	11.1	33,846	19.9	13,748	17.3	19,438	8.3	—	—	1,485	3.2	121,976	12.0
1984	54,808	11.1	34,418	20.0	13,761	17.1	20,035	8.6	—	—	1,474	3.1	124,496	12.1

Source: Saskatchewan Hospital Services Plan, Annual Covered Population.

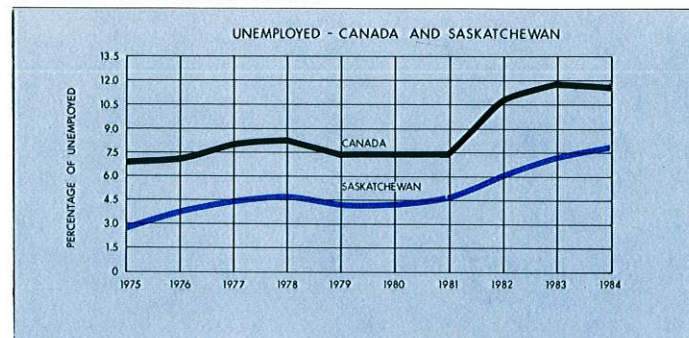
Table 8: Saskatchewan Percentage Population 65 and Over

Year	Age							Total 65+
	65-69	70-74	75-79	80-84	85-89	90+	%	
	percent							
1971	3.3	2.4	2.0	1.4	0.7	0.3	10.0	94,169
1972	3.4	2.5	2.0	1.4	0.7	0.3	10.4	96,997
1973	3.6	2.7	2.0	1.4	0.8	0.3	10.8	99,783
1974	3.6	2.7	1.9	1.4	0.8	0.3	10.9	100,314
1975	3.6	2.8	1.9	1.4	0.8	0.4	10.9	101,417
1976	3.7	2.8	1.9	1.4	0.8	0.4	10.9	103,388
1977	3.7	2.9	2.0	1.3	0.8	0.4	11.0	105,630
1978	3.8	2.9	2.0	1.3	0.8	0.4	11.2	106,235
1979	3.8	3.0	2.1	1.3	0.8	0.4	11.4	111,285
1980	4.0	3.0	2.1	1.3	0.8	0.4	11.6	113,974
1981	4.0	3.1	2.2	1.3	0.8	0.4	11.8	116,723
1982	4.0	3.1	2.2	1.4	0.8	0.4	11.9	119,485
1983	4.0	3.2	2.3	1.4	0.8	0.4	12.0	121,976
1984	3.9	3.2	2.3	1.4	0.7	0.4	12.1	124,490

Source: Saskatchewan Hospital Services Plan, Annual Covered Population.

Note: The data contained in this publication have been drawn from a number of sources and therefore such data as population counts may vary slightly between sources.

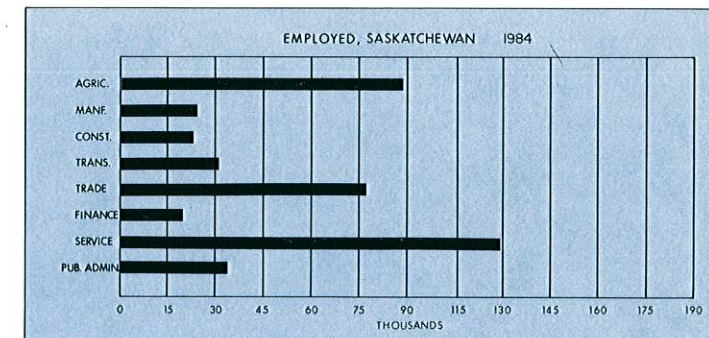
Table 9: Labour Force, Annual Averages Canada and Saskatchewan



	1979	1980	1981	1982	1983	1984
Labour Force			number ('000)			
Canada	11,231	11,573	11,904	11,958	12,183	12,399
Saskatchewan	428	437	446	455	470	477
Employed			number ('000)			
Canada	10,395	10,708	11,006	10,644	10,734	11,000
Saskatchewan	411	417	425	426	436	439
Unemployed			number ('000)			
Canada	836	865	898	1,314	1,448	1,399
Saskatchewan	18	19	21	28	35	38
Unemployment			as a percent of the labour force			
Canada	7.4	7.5	7.5	11.0	11.9	11.3
Saskatchewan	4.2	4.4	4.7	6.2	7.4	8.0
Participation Rate			percent			
Canada	63.4	64.1	64.8	64.1	64.4	64.8
Saskatchewan	62.7	63.0	63.5	63.9	65.2	65.1

Source: Statistics Canada 71-001, The Labour Force; 71-201, Historical Labour Force Statistics.

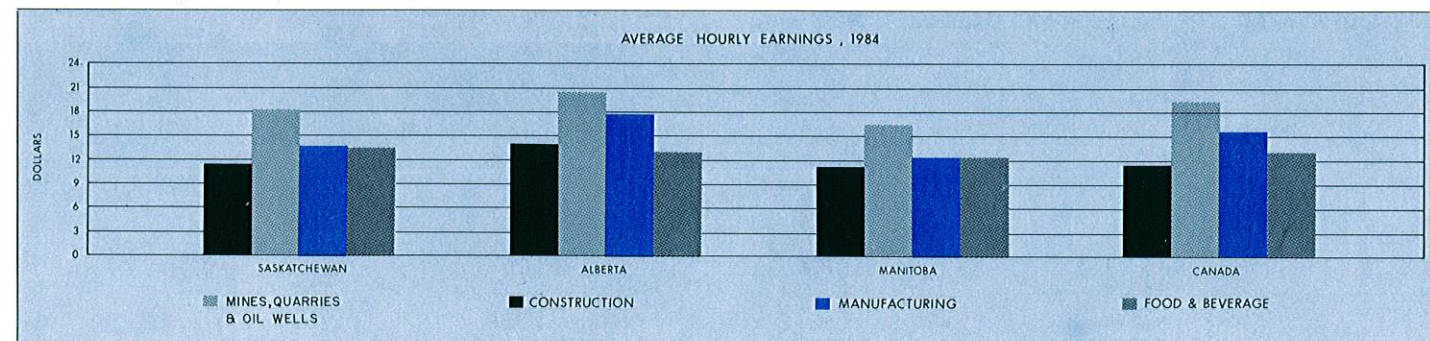
Table 10: Employed by Industry, Saskatchewan



	1980	1981	1982	1983	1984
	thousands				
Agriculture	87	85	85	87	89
Non-Agriculture	330	341	341	349	349
Other Primary Industries	13	14	11	11	12
Manufacturing	23	25	24	23	24
Construction	27	27	24	25	23
Transp., Communication and other Utilities	35	32	33	32	31
Trade	75	75	78	76	77
Finance, Insurance and Real Estate	19	19	17	20	20
Service	107	117	121	126	129
Public Administration	33	31	33	37	34

Source: Statistics Canada 71-001, The Labour Force; 71-529, The Labour Force Annual Averages.

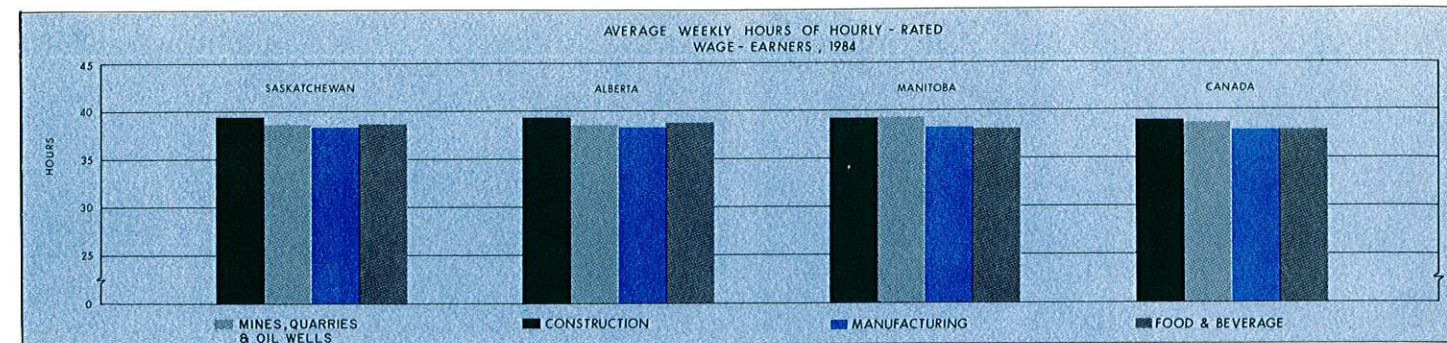
Table 11: Annual Average Hourly Earnings of Hourly-rated Wage-earners, Saskatchewan, Alberta, Manitoba and Canada



Industry	Saskatchewan		Alberta		Manitoba		Canada	
	1983	1984	1983	1984	1983	1984	1983	1984
	dollars							
Mines, quarries & oil wells	14.08	18.29	15.14	20.57	14.30	16.58	14.18	19.41
Manufacturing	10.96	13.86	12.16	14.99	9.12	12.49	10.55	14.53
Durable goods	11.18	14.42	12.92	15.06	9.53	12.68	11.19	14.87
Non-durable goods	10.73	13.52	11.37	14.96	8.76	12.31	9.91	14.27
Food and beverages	10.69	13.56	10.81	13.27	9.98	12.49	9.82	13.33
Construction	12.14	11.45	15.34	14.20	11.69	11.49	13.87	11.59
Building	11.65	10.88	15.32	13.08	11.92	11.12	13.74	10.95
Engineering	13.44	14.44	15.35	18.07	10.76	14.33	14.41	14.47
Restaurants, caterers and taverns	5.19	7.82	5.60	8.23	4.81	7.93	4.99	8.03

Source: Statistics Canada 72-002, Employment, Earnings and Hours.

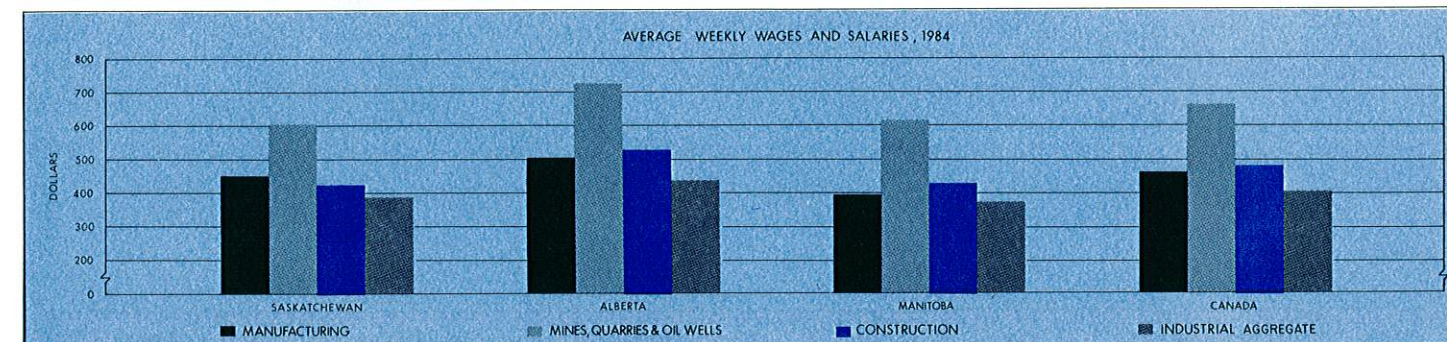
Table 12: Average Weekly Hours of Hourly-rated Wage-earners, Saskatchewan, Alberta, Manitoba and Canada



Industry	Saskatchewan		Alberta		Manitoba		Canada	
	1983	1984	1983	1984	1983	1984	1983	1984
	hours							
Mines, quarries and oil wells	37.5	38.7	38.7	38.6	38.4	39.4	38.8	38.7
Manufacturing	35.4	38.4	36.4	38.4	36.8	38.4	38.3	38.0
Durable goods	35.8	38.4	37.0	38.8	37.7	38.7	39.3	38.6
Non-durable goods	35.1	38.4	35.8	38.2	36.0	38.1	37.4	37.6
Food and beverages	35.8	38.7	35.1	38.8	35.5	38.1	36.2	37.9
Construction	36.6	39.5	35.4	39.4	36.9	39.3	36.8	38.9
Building	34.9	39.3	34.4	39.4	35.9	39.2	35.9	38.7
Engineering	42.7	40.2	39.1	39.7	41.5	40.4	40.5	39.5
Restaurants, caterers and taverns	23.8	39.0	24.8	41.5	22.9	39.5	24.4	39.1

Source: Statistics Canada 72-002, *Employment, Earnings and Hours*.

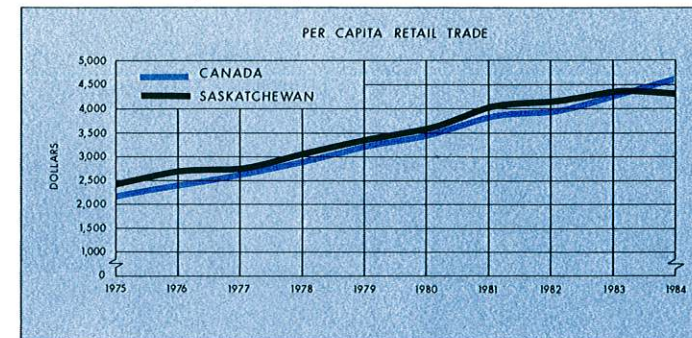
Table 13: Average Weekly Wages and Salaries, Saskatchewan, Alberta, Manitoba and Canada



Industry	Saskatchewan		Alberta		Manitoba		Canada	
	1983	1984	1983	1984	1983	1984	1983	1984
	dollars							
Mines, quarries and oil wells	572.65	607.24	702.25	730.43	557.13	619.93	623.87	664.57
Manufacturing	426.26	453.70	485.06	501.65	366.88	395.75	438.53	465.64
Construction	439.97	430.11	538.23	536.05	421.81	435.02	485.78	490.95
Transportation, comm. and other utilities	489.13	511.36	513.89	534.42	487.95	510.37	497.24	521.32
Trade	272.26	289.60	307.13	317.89	265.17	281.70	280.91	293.50
Finance, insurance and real estate	395.07	408.56	406.60	428.21	373.12	389.87	397.15	417.69
Service	320.27	370.88	355.88	398.14	307.41	368.82	332.06	377.70
Industrial aggregate	371.79	387.68	427.45	439.27	358.18	377.29	388.29	405.13

Source: Statistics Canada 72-002, *Employment, Earnings and Hours*.

Table 14: Retail Trade Saskatchewan, Alberta, Manitoba and Canada



Year	Saskatchewan	Alberta	Manitoba	Canada
	millions of dollars			
1971	1,139	2,467	1,318	30,648
1972	1,363	2,728	1,476	34,086
1973	1,533	3,070	1,679	38,313
1974	1,904	3,736	1,962	44,739
1975	2,242	4,556	2,157	51,361
1976	2,522	5,290	2,371	57,128
1977	2,569	5,924	2,474	61,623
1978	2,874	6,793	2,688	68,779
1979	3,202	8,053	2,936	77,025
1980	3,453	9,411	3,164	84,027
1981	3,876	10,906	3,578	94,293
1982	4,042	10,941	3,830	97,639
1983	4,357	11,304	4,100	106,243
1984	4,354	11,833	4,514	116,080

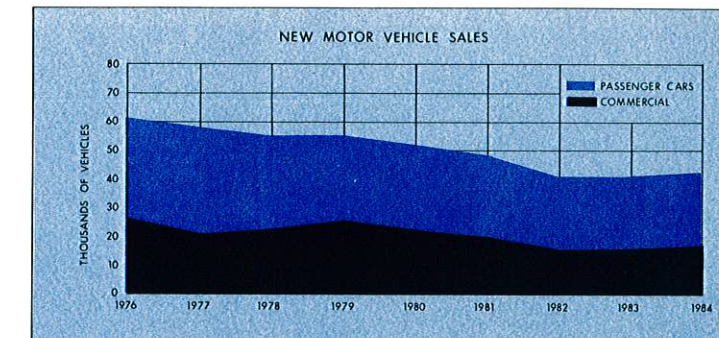
Source: Statistics Canada, CANSIM and 63-005, *Retail Trade*.

Table 16: Retail Trade by Kind of Business, Saskatchewan

Kind of Business	1981	1982	1983	1984
	thousands of dollars			
Combination (groceries and meat)	624,092	670,982	734,690	766,579
Grocery, Confection and Sundries	118,154	131,074	142,787	169,749
All Other Food	29,614	34,335	39,739	42,356
Department	287,973	298,392	347,524	366,425
General Merchandise	189,410	188,900	175,134	165,483
General	229,216	242,103	251,338	248,417
Variety	46,518	46,056	48,946	50,440
Motor Vehicle	913,801	860,751	927,360	886,626
Used Car	3,127	4,124	11,741	18,424
Service Stations	263,222	257,538	218,593	184,593
Garages	21,171	27,352	27,521	40,506
Automotive Parts and Accessories	80,658	91,740	102,517	95,813
Men's Clothing	32,885	35,745	44,607	43,022
Women's Clothing	68,905	74,568	81,018	83,396
Family Clothing	52,485	52,025	56,106	58,307
Specialty Shoe	3,953	3,673	3,773	3,965
Family Shoe	22,448	26,791	26,623	26,394
Hardware	35,098	44,514	47,242	49,991
Household Furniture	68,614	64,003	78,252	57,305
Household Appliance	15,191	15,533	16,709	17,141
Furniture, T.V., Radio and Appliance	37,314	26,635	28,149	29,514
Pharmacies, Patent Medicine and Cosmetic	133,823	160,896	181,845	177,062
Book and Stationery	11,461	10,619	11,819	13,194
Florists	8,367	12,501	16,243	16,306
Jewellery	43,221	44,412	37,808	38,527
Sporting Goods and Accessories	71,443	86,226	103,590	114,272
Personal Accessories	32,621	36,470	32,079	32,470
All Other Stores	431,419	494,114	563,161	558,132
Total All Stores	3,876,204	4,042,072	4,357,114	4,354,409

Source: Statistics Canada 63-005, *Retail Trade*.

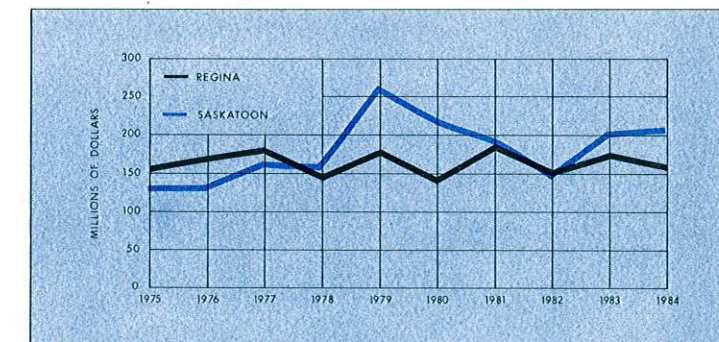
Table 15: New Motor Vehicle Sales, Saskatchewan



Year	Passenger Cars		Commercial Vehicles		Total Vehicles	
	Sales	Value	Sales	Value	Sales	Value
	No.		\$'000		\$'000	
1974	36,279	160,666	24,572	130,789	60,851	291,455
1975	33,705	178,172	27,942	177,545	61,647	355,717
1976	34,810	199,669	26,382	182,653	61,192	382,322
1977	32,876	202,267	21,337	154,998	54,213	357,265
1978	31,752	217,786	23,380	193,980	55,132	411,766
1979	29,495	232,907	25,598	260,436	55,093	493,343
1980	29,417	253,342	22,561	256,956	51,978	510,298
1981	28,807	282,580	20,095	251,260	48,902	533,840
1982	24,899	259,446	16,575	222,038	41,474	481,484
1983	25,102	290,078	16,429	220,846	41,531	510,924
1984	25,235	317,120	17,645	256,804	42,880	573,924

Source: Statistics Canada 63-208, 63-007, *New Motor Vehicle Sales*.

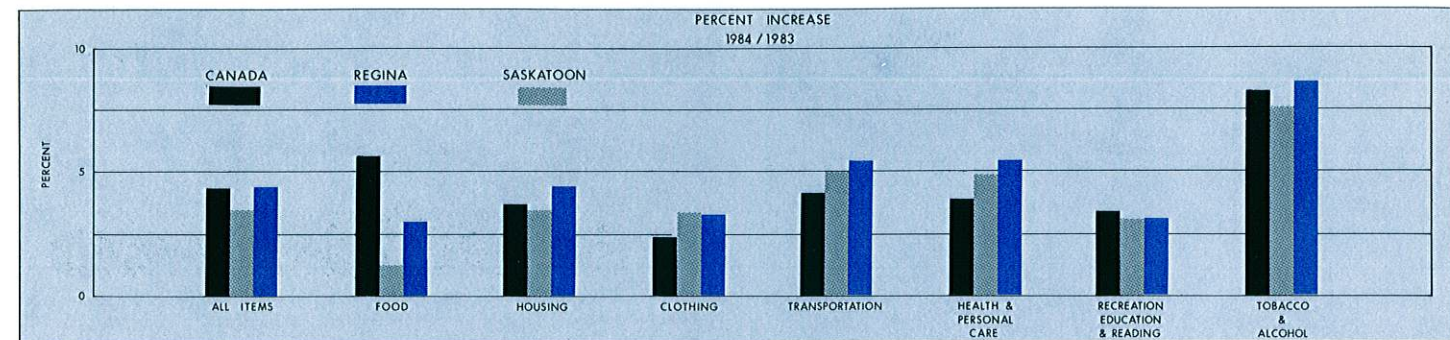
Table 17: Value of Building Permits Issued for Construction Saskatchewan, Regina, Saskatoon



City	millions of dollars				
	1980	1981	1982	1983	1984
Regina					
Residential	54	67	71	103	71
Industrial	14	33	6	19	7
Commercial	60	68	41	24	40
Instit. & Gov't	12	16	32	29	38
Total	139	184	150	175	156
Saskatoon					
Residential	96	110	100	112	97
Industrial	8	12	4	4	4
Commercial	72	48	28	44	45
Instit. & Gov't	36	19	13	40	56
Total	212	189	145	200	202
Provincial Total	546	575	430	613	570

Source: Statistics Canada 64-203, *Building Permits*.

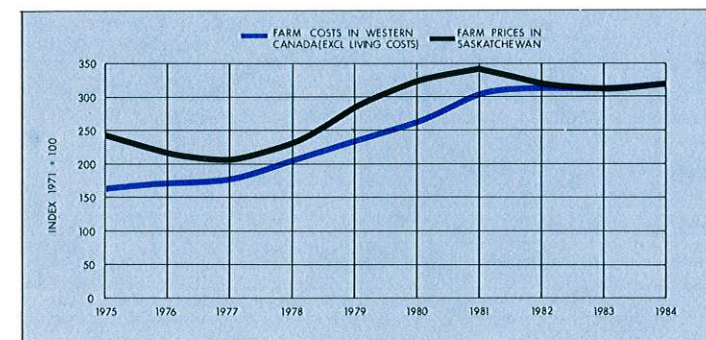
Table 18: Consumer Price Indexes, Canada, Regina, Saskatoon and Selected Cities (1981 = 100)



	All Items	Food	Housing	Clothing	Transportation	Health & Personal Care	Recreation Education & Reading	Tobacco and Alcohol
Canada								
1983	117.2	111.2	120.2	109.8	119.8	118.2	115.8	130.0
1984	122.3	117.4	124.7	112.5	124.8	122.8	119.7	140.6
Regina								
1983	116.0	111.0	120.8	110.2	111.7	120.8	115.7	126.2
1984	121.1	114.3	126.1	113.8	117.7	127.3	119.3	137.0
Saskatoon								
1983	115.9	109.4	119.9	111.7	113.4	117.8	116.0	126.2
1984	120.0	110.8	124.1	115.5	119.1	123.6	119.6	135.8
Edmonton								
1983	117.2	111.5	118.8	109.1	119.2	122.7	116.1	134.0
1984	120.4	116.6	119.1	111.8	124.0	126.0	119.5	146.4
Calgary								
1983	117.1	109.7	119.8	105.6	120.0	124.1	116.7	131.2
1984	120.0	115.2	119.0	107.8	124.9	129.0	119.4	143.9
Winnipeg								
1983	116.1	107.6	120.2	109.0	117.8	117.3	114.6	133.2
1984	120.3	110.4	124.9	112.0	121.8	119.6	119.4	143.6

Source: Statistics Canada 62-010, Consumer Price and Price Indexes.
Note: Revised data based on the 1978 Family Expenditure Survey.

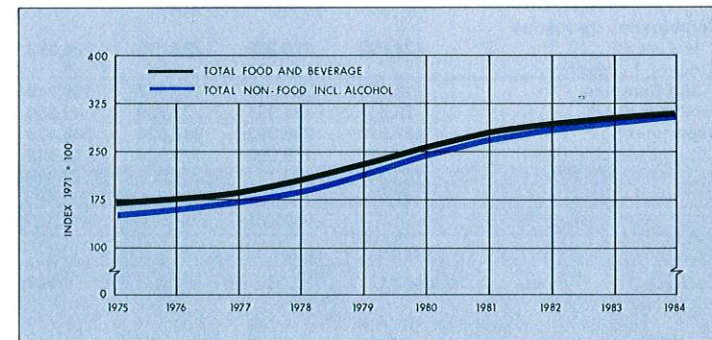
Table 19: Indexes of Farm Prices and Farm Costs (1971 = 100)



Year	Major Indexes, Western Canada					
	Farm Prices of Agricultural Products, Sask.	Farm Inputs Total	Building and Motor Fencing	Machinery and Motor Vehicles ¹	Crop Production	Interest
1974	273.8	144.3	144.6	121.1	191.6	178.1
1975	248.2	163.0	156.6	140.3	236.6	203.3
1976	220.2	174.9	173.8	153.1	229.5	242.3
1977	205.5	179.5	187.3	164.8	219.7	237.8
1978	232.6	203.0	204.8	176.5	227.4	278.6
1979	288.3	237.9	228.8	193.9	251.2	398.3
1980	329.8	261.7	240.1	221.9	313.5	473.3
1981	345.0	303.2	262.4	226.7	358.5	668.3
1982	323.5	312.3	278.6	287.6	337.4	653.7
1983	314.6	311.6	301.2	301.6	320.5	518.4
1984	323.0	320.7	298.9	310.6	330.6	573.8

¹Farm share only.
Source: Statistics Canada 62-003, Index Numbers of Farm Prices of Agricultural Products; 62-004, Farm Input Price Index.

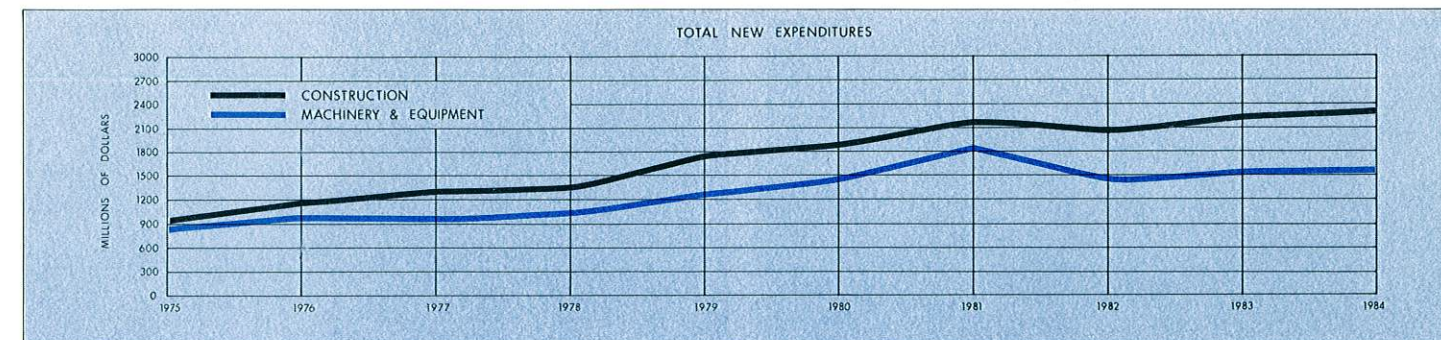
Table 20: Industry Selling Price Indexes, Canada (1971 = 100)



Year	Total Food & Beverage Excl. Alcohol	Food & Beverage	Total Non-Food Incl. Alcohol	Total Manufacturing
1972	109.0	108.7	103.4	104.4
1973	133.5	131.3	112.3	116.1
1974	157.6	155.0	133.8	138.1
1975	173.4	170.9	149.3	153.7
1976	175.8	173.7	158.4	161.6
1977	187.9	185.9	171.3	174.3
1978	208.9	205.6	186.4	190.4
1979	235.6	231.7	214.1	217.9
1980	260.5	256.6	244.3	247.2
1981	282.7	279.4	270.1	272.4
1982	295.5	294.4	287.3	288.8
1983	305.0	304.8	297.4	298.8
1984	322.2	321.9	308.3	310.8

Source: Statistics Canada 62-011, Industry Price Indexes.

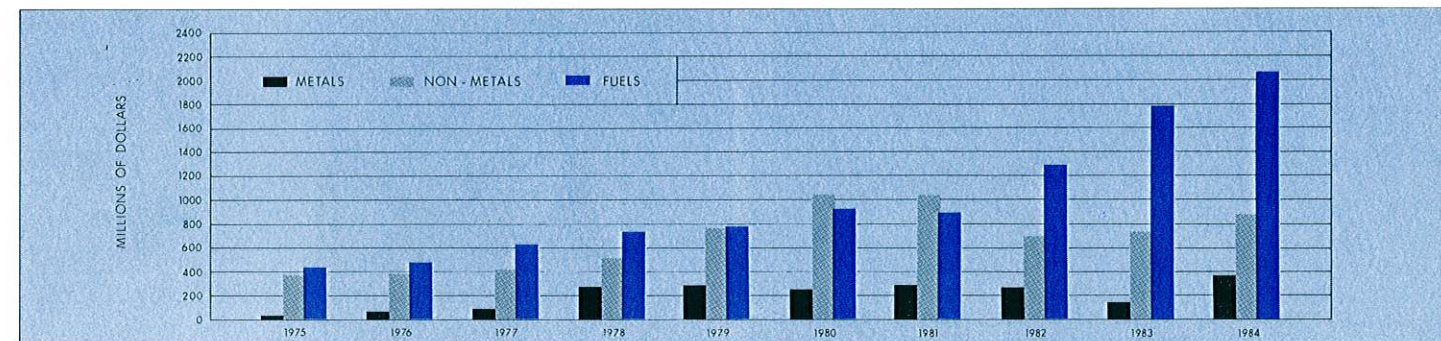
Table 21: Private and Public Investment by Industry, Saskatchewan



	1974	1975	1976	1977	1978	1979	1980	1981	1982	1983	1984 ¹
	millions of dollars										
New Construction	681.4	922.9	1,197.0	1,314.1	1,349.5	1,752.9	1,874.0	2,192.1	2,057.9	2,230.9	2,219.6
Primary Industries	126.6	140.5	146.5	161.8	251.9	362.8	490.8	516.6	590.3	699.7	832.2
Manufacturing	21.8	22.5	27.8	33.8	16.6	20.1	37.3	31.2	21.8	19.8	26.1
Utilities	84.3	111.3	143.1	194.9	156.7	202.2	260.4	645.9	513.2	414.3	369.4
Housing	213.3	324.9	504.5	532.7	500.2	580.1	481.7	403.5	385.7	541.1	431.8
Trade, Finance, Services	39.6	57.8	91.9	93.9	104.6	190.4	204.5	177.8	127.9	144.0	150.7
Institutions, Government	195.8	265.9	283.2	297.0	319.5	397.3	399.3	417.1	419.0	412.0	481.4
New Machinery and Equipment	580.3	856.9	982.8	955.2	1,043.1	1,350.7	1,450.5	1,835.2	1,434.1	1,514.1	1,521.6
Primary Industries	374.2	567.8	636.3	597.7	705.0	867.3	925.7	1,117.1	878.1	883.1	852.7
Manufacturing	30.2	37.6	56.5	41.4	36.1	90.8	77.9	92.7	59.7	84.5	86.7
Utilities	83.8	124.8	139.1	157.7	146.8	152.8	219.1	250.2	234.7	226.3	202.9
Trade, Finance, Services	58.2	86.6	107.1	116.4	102.2	188.3	174.3	295.9	199.0	228.6	279.8
Institutions, Government	33.9	40.1	43.8	42.0	53.0	51.5	53.5	79.3	62.6	91.6	99.5
Total New Capital Expenditure	1,261.7	1,779.8	2,179.8	2,269.3	2,392.6	3,103.6	3,324.5	4,027.3	3,492.0	3,745.0	3,813.2
Repair Expenditure on Construction	176.3	207.5	224.0	250.1	303.3	350.8	405.0	407.0	450.8	486.1	494.2
Repair Expenditure on Machinery	249.1	273.7	303.4	325.2	374.9	444.9	581.4	716.8	727.3	741.5	852.4
Total New and Repair Expenditure	1,687.1	2,261.0	2,707.2	2,844.6	3,070.8	3,899.3	4,310.9	5,151.1	4,670.1	4,972.6	5,159.8

¹Preliminary actual.
Source: Statistics Canada 61-205, Private and Public Investment in Canada.

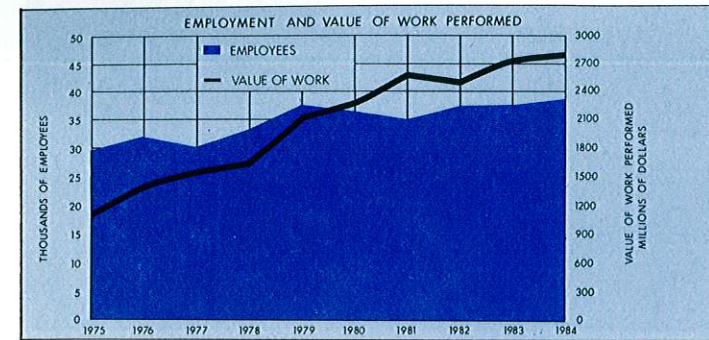
Table 22: Value of Mineral Sales by Kind, Saskatchewan



	1973	1974	1975	1976	1977	1978	1979	1980	1981	1982	1983	1984 ¹
	millions of dollars											
Copper	15.7	12.9	9.7	14.6	9.8	9.8	14.0	12.3	10.0	11.2	12.0	7.1
Zinc	6.1	4.4	3.0	6.4	3.8	4.3	4.4	4.1	8.2	5.0	6.3	7.8
Uranium	9.8	14.5	15.7	44.7	75.0	261.5	258.0	232.2	258.3	250.5	121.4	353.7
Other Metals	5.1	4.5	3.8	4.1	3.9	4.1	7.4	11.2	7.8	4.8	4.4	4.3
Total Metals	36.7	36.3	32.2	69.8	92.5	279.8	283.8	259.8	284.3	271.5	144.1	372.9
Potash	195.0	312.5	356.1	358.4	398.1	495.7	733.3	1,009.7	995.1	642.9	685.9	829.4
Sodium Sulphate	6.5	14.1	19.7	21.1	18.8	17.4	23.1	27.3	36.4	43.6	38.8	34.2
Salt & Others	2.1	2.7	2.7	3.6	3.9	4.9	9.2	13.3	13.6	16.1	16.8	17.3
Total Non-Metals	203.6	329.3	378.5	383.1	420.8	518.0	765.7	1,050.3	1,045.1	702.6	741.5	880.9
Petroleum	263.7	396.7	406.3	443.7	579.1	689.3	726.7	862.4	821.0	1,189.4	1,650.8	1870.0
Natural Gas	7.5	7.7	9.0	10.7	13.0	16.9	17.2	19.6	19.7	24.2	50.2	88.4
Coal & Others	11.7	12.3	14.0	22.1	28.6	26.5	32.4	40.5	50.3	68.9	84.1	104.6
Total Fuels	282.9	416.7	429.3	476.5	620.7	732.7	776.3	922.5	891.0	1,282.5	1,785.1	2,063.0
Sand and Gravel	5.2	9.7	10.7	11.1	11.1	16.2	16.9	18.2	20.3	21.0	19.0	27.5
Total Structural Material	5.2	9.7	10.7	11.1	11.1	16.2	16.9	18.2	20.3	21.0	19.0	27.5
Grand Total	528.4	792.0	850.7	940.5	1,145.1	1,546.7	1,842.7	2,250.8	2,240.7	2,277.6	2,689.7	3,344.3

¹Preliminary
Source: Saskatchewan Department of Energy and Mines.

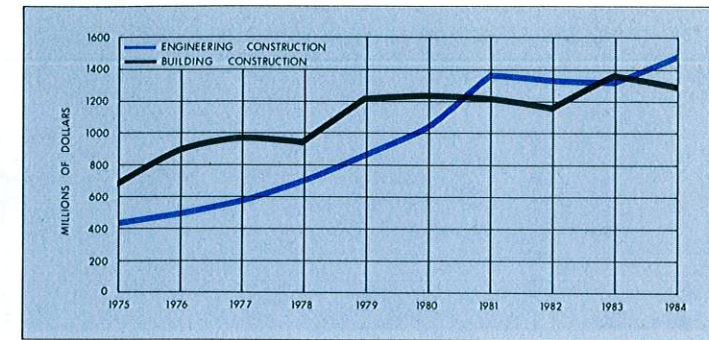
Table 23: Construction Industry: Employment and Value of Work Performed, Saskatchewan



Year	Employees	Salaries and Wages	Net Value of Production	Value of Work Performed
	no.		thousands of dollars	
1972	21,888	205,537	343,831	593,380
1973	25,237	251,849	416,972	699,919
1974	26,354	311,718	515,549	857,667
1975	29,513	411,244	680,966	1,130,553
1976	32,169	506,218	902,151	1,421,590
1977	30,100	518,814	967,953	1,563,967
1978	33,466	609,126	1,051,683	1,653,217
1979	37,768	766,512	1,331,515	2,103,224
1980	36,329	790,786	1,388,777	2,278,414
1981	35,037	848,729	1,588,977	2,599,586
1982	37,356	781,790	1,511,474	2,509,122
1983	37,460	905,726	1,672,241	2,716,883
1984 ¹	38,525	922,082	1,714,977	2,786,136

¹Preliminary actual
Source: Statistics Canada 64-201, *Construction in Canada*.

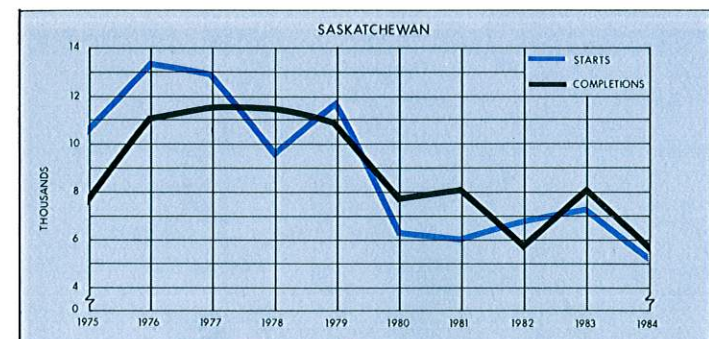
Table 24: Value of Construction Work Performed by Type of Structure, Saskatchewan



Type of Structure	1980	1981	1982	1983	1984 ¹
	millions of dollars				
Total Construction	2,278	2,600	2,509	2,716	2,786
Building Construction	1,238	1,208	1,165	1,383	1,293
Residential	562	493	483	651	547
Industrial	98	96	126	127	103
Commercial	295	302	252	256	254
Institutional	130	129	146	156	191
Other Building	153	188	158	193	198
Engineering Construction	1,040	1,392	1,344	1,333	1,493
Road, Highway	187	203	186	198	207
Waterworks, Sewage	110	98	100	103	116
Dams, Irrigation	17	22	24	18	23
Electric Power	99	111	134	224	190
Railway, Telephone	143	150	141	152	163
Gas and Oil Facilities	353	657	557	488	653
Other Engineering	131	151	202	150	141

¹Preliminary actual
Source: Statistics Canada 64-201, *Construction in Canada*.

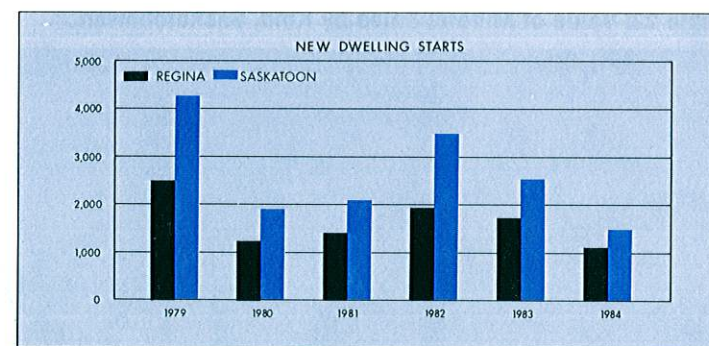
Table 25: New Dwelling Units: Starts and Completions, Saskatchewan, Alberta, Manitoba and Canada



	Saskatchewan	Alberta	Manitoba	Canada
Starts				
1975	10,505	24,707	7,845	231,456
1976	13,143	38,771	9,339	273,203
1977	12,825	38,075	9,410	245,724
1978	9,527	47,925	12,121	227,667
1979	11,742	39,947	5,772	197,049
1980	6,250	32,031	2,597	158,601
1981	5,972	38,470	2,824	177,973
1982	6,822	26,789	2,030	125,860
1983	7,269	17,134	5,985	162,645
1984	5,221	7,295	5,308	134,900
Completions				
1975	7,705	17,550	8,760	216,964
1976	11,046	25,858	8,492	236,249
1977	11,485	37,879	8,720	251,789
1978	11,383	43,025	10,550	246,533
1979	10,865	44,492	8,410	226,489
1980	7,763	34,717	4,503	176,168
1981	8,085	34,755	4,515	174,996
1982	5,666	31,364	1,633	133,942
1983	8,090	24,693	4,076	163,008
1984	5,722	12,057	5,865	153,012

Source: Statistics Canada 64-002, *Housing Starts and Completions*.

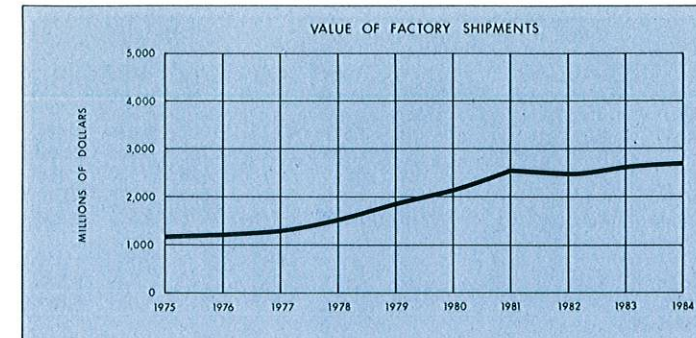
Table 26: New Dwelling Units Started, by Type, Saskatchewan



	Single Dwellings	Double Dwellings	Apartments	Row	Total
Saskatchewan					
1979	6,758	568	4,179	237	11,742
1980	3,682	278	2,182	108	6,250
1981	3,189	413	2,150	220	5,972
1982	2,179	259	4,213	171	6,822
1983	4,274	110	2,681	204	7,269
1984	3,011	396	1,670	144	5,221
Regina					
1979	1,322	82	1,104	29	2,537
1980	625	4	579	48	1,256
1981	965	2	376	88	1,431
1982	617	60	1,114	161	1,952
1983	1,162	10	466	96	1,734
1984	759	10	262	86	1,117
Saskatoon					
1979	1,763	244	2,084	168	4,259
1980	1,005	62	775	38	1,880
1981	892	238	946	...	2,076
1982	707	156	2,618	...	3,481
1983	1,346	44	1,127	12	2,529
1984	824	170	468	...	1,462

Source: Statistics Canada 64-002, *Housing Starts and Completions*.

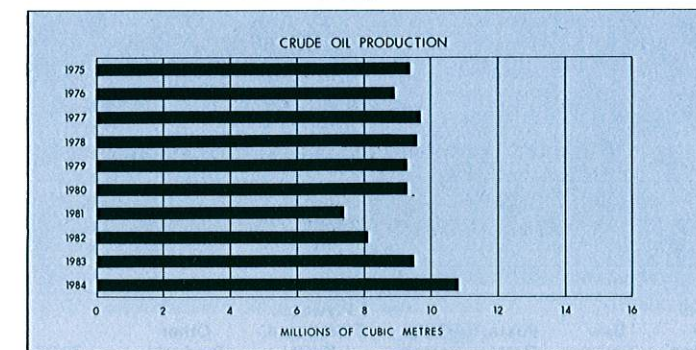
Table 27: Manufacturing Industry, Saskatchewan



Year	Total Employees	Salaries and Wages	Total Value Added	Value Factory Shipments
	thousands of dollars			
1974	17,917	164,165	391,123	1,045,160
1975	19,213	208,281	455,185	1,176,473
1976	18,694	231,643	469,303	1,213,350
1977	18,648	258,428	489,184	1,299,498
1978	19,222	282,812	568,077	1,513,768
1979	20,051	323,212	692,754	1,863,273
1980	21,195	371,465	817,024	2,118,180
1981	21,479	422,926	861,456	2,503,630
1982	20,115	438,505	810,687	2,488,065
1983	18,866	443,253	881,490	2,619,475
1984 ¹	19,550	552,155	898,445	2,669,858

¹Saskatchewan Bureau of Statistics estimate.
Source: Statistics Canada 31-203, *Manufacturing Industries of Canada: National and Provincial Areas, 1983*, Statistics Canada Special Tabulations.

Table 29: Crude Oil Statistics, Saskatchewan



Year	Production of Crude Oil			Total	Drilling ¹	
	Light Gravity	Medium Gravity	Heavy Gravity		Wells Drilled	Metres Drilled
	millions of m ³				no.	'000
1970	5.0	7.8	1.4	14.2	945	765
1971	4.8	7.5	1.8	14.1	770	642
1972	4.6	7.3	1.9	13.8	655	568
1973	4.3	7.1	2.2	13.6	661	551
1974	4.0	5.6	2.1	11.7	286	220
1975	3.5	3.8	2.0	9.4	277	208
1976	3.3	4.0	1.6	8.9	262	234
1977	3.1	4.8	1.8	9.7	533	437
1978	2.9	4.7	2.0	9.6	999	738
1979	2.7	4.4	2.2	9.3	1,272	954
1980	2.7	4.2	2.4	9.3	1,498	1,248
1981	1.9	2.9	2.6	7.4	807	697
1982	2.3	3.1	2.7	8.1	808	690
1983	3.0	3.3	3.2	9.5	1,843	1,688
1984	3.4	3.8	3.6	10.8	2,970	2,699

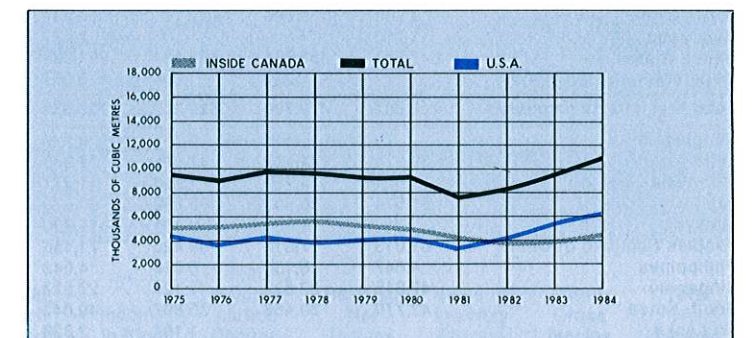
¹Includes all drilling.
Source: Saskatchewan Energy and Mines, *Mineral Statistical Year Book*.

Table 28: Manufacturing by Industry Groups, Saskatchewan

	Estab-lish-ments	Em- ployees	Salaries and Wages	Cost of Materials Used	Value of Factory Ship-ments	Value Added Total Activity
Food						
1982	107	4,196	89.4	607.9	784.0	169.3
1983	104	4,108	95.0	632.4	817.2	185.1
Clothing						
1982	7	452	5.6	8.9	19.7	8.9
1983	5	300	4.2	7.7	18.1	8.4
Fabricated Metals						
1982	—	1,637	38.5	39.6	108.7	72.4
1983	96	1,538	34.7	35.3	104.4	76.8
Machinery						
1982	49	—	—	—	—	—
1983	53	1,895	40.7	67.1	158.5	81.1
Transportation Equipment						
1982	16	537	11.5	18.1	32.3	13.0
1983	19	620	14.0	25.9	47.7	22.1
Electrical and Electronic						
1982	14	1,108	23.4	43.1	81.0	40.5
1983	17	1,270	30.9	39.9	85.9	57.4
Non-Metallic Mineral Products						
1982	70	993	24.7	42.3	103.2	52.8
1983	79	954	24.8	50.0	112.8	57.0
Chemical and Chemical Products						
1982	18	388	10.4	67.1	98.8	37.2
1983	17	482	13.8	72.4	119.0	49.1
Other Industries						
1982	399	10,524	231.4	809.2	1,261.3	420.1
1983	350	7,699	185.2	754.3	1,155.9	344.5
Total						
1982	680	19,835	434.9	1,636.2	2,489.0	814.2
1983	740	18,866	443.3	1,685.0	2,619.5	881.5

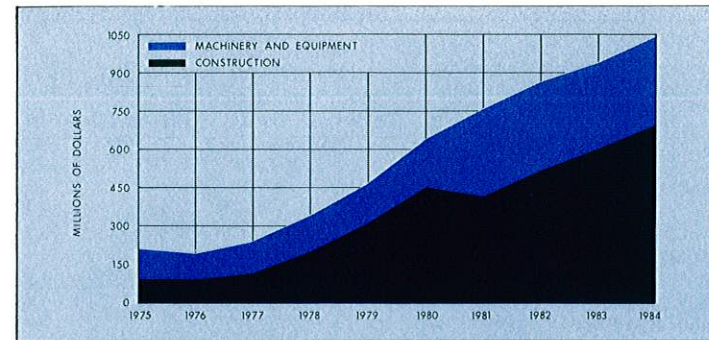
Source: Statistics Canada 31-203, *Manufacturing Industries of Canada: National and Provincial areas*.

Table 30: Principal Markets for Saskatchewan Crude Oil



Year	Sask. Refineries	Other Canada	Ontario	United States	Mani- toba	Quebec	Total
	thousands of m ³						
1970	—	—	8,120	4,497	1,303	—	14,365
1971	254	—	6,913	5,403	1,414	—	13,984
1972	296	—	5,382	6,958	1,343	—	13,978
1973	244	—	4,702	7,361	1,249	—	13,555
1974	192	—	4,075	6,243	1,264	—	11,775
1975	296	—	4,212	4,309	592	—	9,409
1976	381	—	4,421	3,701	327	37	8,866
1977	343	—	4,409	4,396	280	416	9,844
1978	119	—	4,715	3,930	269	615	9,647
1979	412	—	3,258	4,099	378	1,159	9,306
1980	279	—	2,775	4,260	381	1,605	9,300
1981	96	—	2,452	3,440	320	1,197	7,505
1982	93	213	2,299	4,241	149	1,129	8,124
1983	164	504	1,886	5,550	110	1,	

Table 31: Mining Investment, Saskatchewan



Year	Capital Expenditures		Repair Expenditures		Total
	Con-struction	Machinery & Equipment	Con-struction	Machinery & Equipment	
	millions of dollars				
1972	36.5	13.5	15.1	24.2	89.3
1973	42.8	15.9	19.4	27.9	106.0
1974	60.2	24.6	28.3	34.5	147.6
1975	58.7	72.6	37.1	40.9	209.3
1976	62.9	57.2	32.3	45.3	197.7
1977	79.4	75.3	37.2	56.0	247.9
1978	154.3	81.5	48.3	59.0	343.1
1979	248.9	74.8	65.0	79.1	467.8
1980	354.2	96.0	96.8	94.7	641.7
1981	347.3	183.7	72.8	157.3	761.1
1982	452.9	200.4	65.2	151.6	870.1
1983	542.3	218.7	58.0	125.4	944.4
1984 ¹	645.3	170.2	57.6	175.5	1,048.6

¹Preliminary actual.
Source: Statistics Canada, Special Tabulation.

Table 32: Volume of Mineral Sales, Saskatchewan

	Unit of Measure	1979	1980	1981	1982	1983	1984 ¹
Metals							
Copper	(000) kg	6,020	4,877	4,513	6,002	6,066	4,474
Zinc	(000) kg	4,826	4,336	7,077	4,795	5,583	5,399
Gold	kg	188	310	324	228	132	166
Silver	kg	7,466	4,993	5,528	3,862	4,776	4,845
Cadmium	kg	7,919	3,678	5,175	4,016	16,804	26,469
Selenium and Tellurium	kg	7,193	4,851	33,832	2,796	—	9,645
Uranium	(000) kg	3,255	2,774	3,123	3,213	1,621	5,851
Non-Metals							
Salt	(000) tonnes	245	332	318	348	336	407
Sodium Sulphate	(000) tonnes	400	437	498	511	413	349
Potash	(000) tonnes	7,033	7,127	6,357	5,087	6,599	6,998
Fuels							
Crude Oil	10 ³ m ³	9,362	9,313	7,409	8,128	9,526	10,800
Natural Gas	10 ⁹ m ³	1,178	1,197	1,191	1,272	1,314	1,744
LPG	10 ³ m ³	155	138	103	92	173	219
Coal	(000) tonnes	5,012	5,980	6,798	7,494	7,760	9,885
Structural Materials							
Sand and Gravel	(000) tonnes	12,236	9,828	10,700	8,512	7,700	9,532

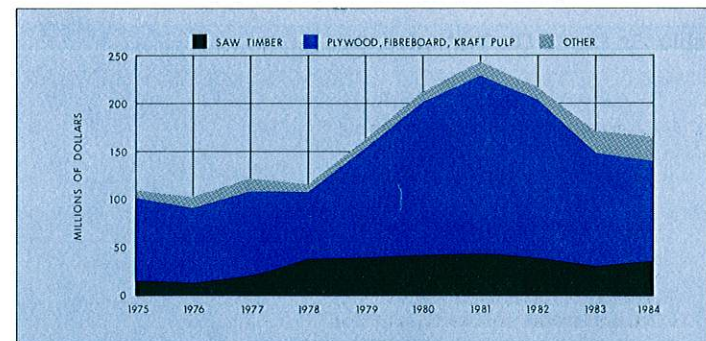
¹Preliminary.
Source: Saskatchewan Department of Energy and Mines.

Table 33: Value of Potash Exports, Canada

Destination	1981	1982	1983	1984
	thousands of dollars			
Brazil	45,659	21,789	34,249	60,232
Chile	2,277	2,107	4,430	5,378
Costa Rica	2,546	...	1,537	2,525
Mexico	9,268	2,086	...	3,597
Nicaragua	1,710	1,921
United States	647,387	452,571	481,181	651,625
Other Western Hemisphere	...	237	960	3,057
Total Western Hemisphere	708,847	478,790	522,357	728,335
Bangladesh	5,778	9,376
India	39,581	44,152	47,525	77,963
Indonesia	...	12,789	1,853	11,277
Japan	61,571	55,592	96,032	83,623
Malaysia	...	1,185	4,131	12,730
Peoples Republic of China	61,613	7,818	59,420	71,156
Philippines	4,647	8,136	6,819	4,543
Singapore	47,015	22,602	13,128	27,827
South Korea	42,770	30,466	35,897	49,042
Sri Lanka	1,164	2,829
Taiwan	14,039	6,347	9,538	9,723
Thailand	...	505
Total Asia	271,236	189,592	281,285	360,089
Oceanic N.E.S.	...	236
Australia	21,407	21,420	21,895	28,630
New Zealand	2,548	4,400	4,540	6,323
Total Oceanic	23,955	26,056	26,435	34,953
Belgium - Luxembourg	...	2,195	2,635	...
Denmark	2,469
France	5,118	17,353
Italy	1,834	...	1,575	...
Romania	...	11	...	17
South Africa	8,202	7,044	6,142	6,834
Togo	...	716
United Kingdom	307	370	1,617	3,817
Other	592	...	2,886	4,865
Total Europe-Africa	10,935	10,336	19,973	35,355
Grand Total	1,014,971	704,774	850,050	1,158,732

Source: Statistics Canada 65-004, Exports by Commodity.

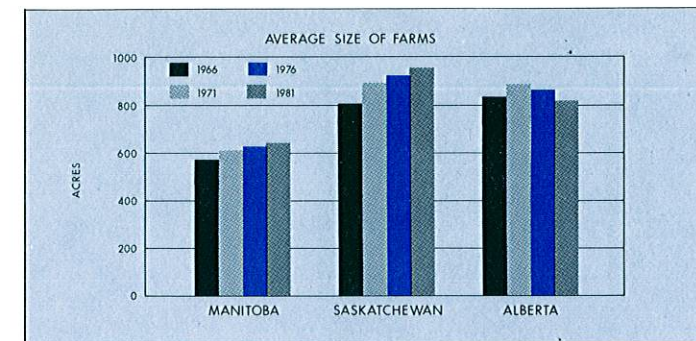
Table 34: Value of Forest Products, Saskatchewan



Fiscal Year Ending	Saw Timber	Posts, Poles	Pulp-wood	Plywood, Fibreboard, Kraft	Other Products	Total
	thousands of dollars					
1973	19,593	2,024	168	37,375	465	59,625
1974	23,780	4,096	207	45,796	1,104	74,983
1975	15,315	8,033	—	86,163	1,024	110,535
1976	13,868	10,732	—	78,267	1,013	103,520
1977	21,941	8,073	—	87,773	4,697	122,484
1978	38,674	5,493	—	69,661	1,646	115,474
1979	39,337	5,956	—	114,894	1,906	162,093
1980	42,732	7,843	—	158,001	3,731	212,307
1981	43,509	8,928	—	186,689	4,950	244,076
1982	39,473	9,355	—	164,700	3,872	217,400
1983	30,570	12,161	—	119,020	9,119	170,870
1984	35,544	17,904	—	105,222	6,886	165,556

Source: Saskatchewan Department of Tourism and Renewable Resources, Annual Report.

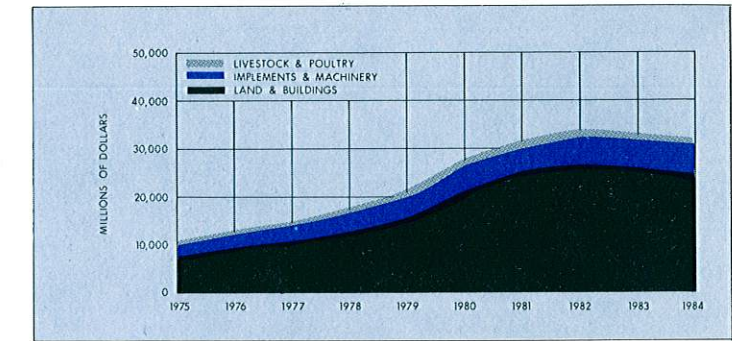
Table 35: Number and Average Size of Farms, Saskatchewan



Size of Farms	Census-Farms		
	1971	1976	1981
Under 3 acres	131	124	264
3— 9 acres	301	263	241
10— 69 acres	886	956	1,189
70— 239 acres	7,213	6,833	7,438
240— 399 acres	12,411	9,894	8,577
400— 559 acres	11,780	9,291	7,718
560— 759 acres	12,638	10,843	9,314
760— 1,119 acres	15,316	14,633	13,510
1,120— 1,599 acres	9,261	9,910	10,012
1,600 and over	7,033	8,211	9,055
Total	76,970	70,958	67,318
Average Size (Acres)	845	923	952

Source: Statistics Canada, Census of Canada.
Note: All agriculture holdings with sales of agricultural products during the previous 12 months of \$250 or more.

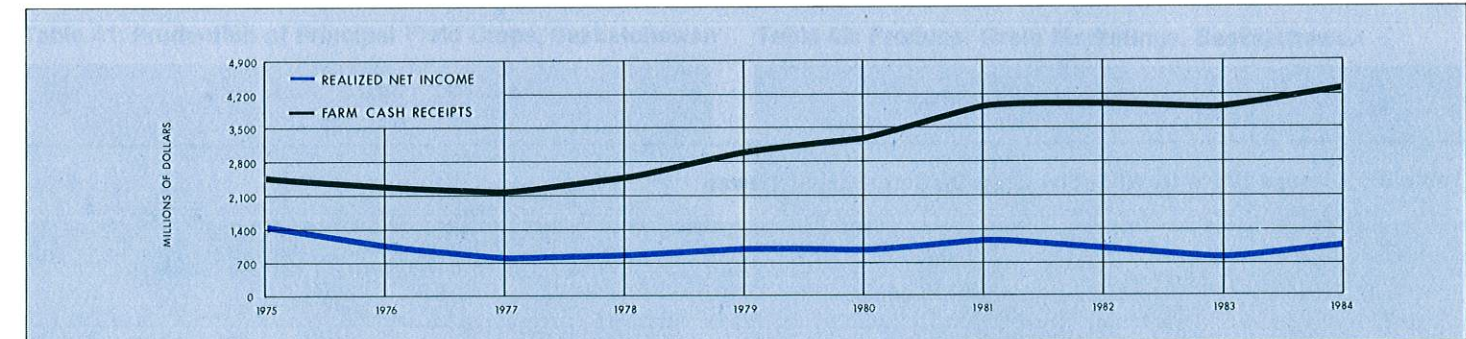
Table 36: Current Values of Farm Capital, Saskatchewan



Year	Livestock & Poultry ¹	Land & Buildings	Implements & Machinery	Total
1971	570.5	3,868.1	1,026.5	5,465.1
1972	695.1	3,953.7	1,077.0	5,725.8
1973	905.4	4,654.3	1,186.2	6,745.9
1974	939.6	5,874.3	1,537.0	8,350.9
1975	707.0	7,679.5	2,082.4	10,468.9
1976	814.1	9,297.8	2,575.2	12,687.1
1977	671.0	10,642.2	2,873.4	14,186.6
1978	975.5	12,992.7	3,298.1	17,266.3
1979	1,392.9	15,769.5	3,821.6	20,984.0
1980	1,463.1	21,789.1	4,383.1	27,635.3
1981	1,390.2	25,048.2	4,916.9	31,355.3
1982	1,384.4	26,826.6	5,154.4	33,365.4
1983	1,325.7	26,021.8	5,269.8	32,617.3
1984	1,303.0	24,980.9	5,358.2	31,642.1

¹Includes value of animals on fur farms.
Source: Statistics Canada 21-202, Farm Net Income.

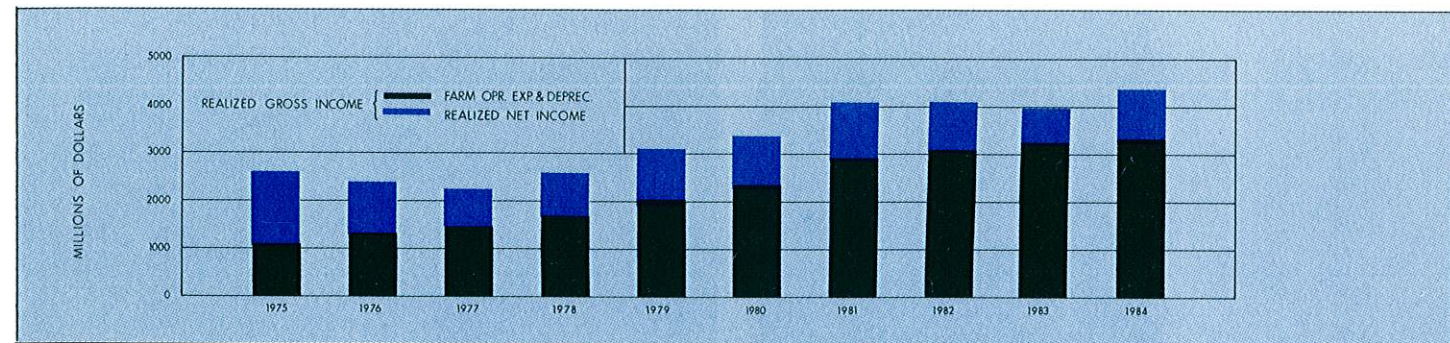
Table 37: Cash Receipts and Net Income of Farm Operators from Farming Operations, Saskatchewan



Year	Wheat	Other Principal Grains	Live-stock	Miscel-laneous	Total	Supple-mentary Payments	Total Cash Receipts	Income in Kind	Operating & Depre-ciation Charges	Realized Net Income	Value of Inventory Change	Total Gross Income	Total Net Income
1969	317	171	172	53	714	6	720	21	567	173	244	984	417
1970	353	88	190	55	686	37	723	19	521	222	19	762	241
1971	470	147	218	57	891	7	898	18	562	354	113	1,029	467
1972	617	203	279	94	1,192	1	1,193	20	611	602	-208	1,006	395
1973	824	166	384	114	1,468	1	1,469	25	746	748	154	1,648	902
1974	1,304	241	384	123	2,088	2	2,090	22	927	1,185	-33	2,079	1,153
1975	1,636	392	385	97	2,510	—	2,510	21	1,124	1,407	79	2,610	1,486
1976	1,298	538	388	88	2,312	—	2,312	25	1,332	1,004	233	2,569	1,237
1977	1,147	501	403	110	2,161	—	2,161	26	1,449	737	53	2,240	791
1978	1,221	655	533	99	2,508	—	2,508	30	1,691	847	36	2,574	883
1979	1,545	788	586	103	3,022	—	3,022	36	2,060	998	-192	2,866	806
1980	2,040	506	632	112	3,290	12	3,302	41	2,395	948	-299	3,044	648
1981	2,616	667	537	133	3,955	54	4,008	42	2,908	1,142	433	4,483	1,575
1982	2,461	770	616	156	4,003	6	4,009	43	3,072	980	121	4,173	1,101
1983	2,566	672	544	155	3,937	—	3,937	39	3,242	735	-160	3,817	575
1984	2,405	1,102	615	164	4,287	29	4,316	41	3,324	1,032	-758	3,598	274

Source: Statistics Canada 21-202, Farm Net Income and Special Tabulations.
Note: Other principal grains include oats; barley, rye, flaxseed, rapeseed, Canadian Wheat Board payments, cash advances, repayments, liquidation of deferred grain receipts, crop insurance payments and western grain stabilization payments. Livestock includes cattle, calves, hogs, sheep and lambs.

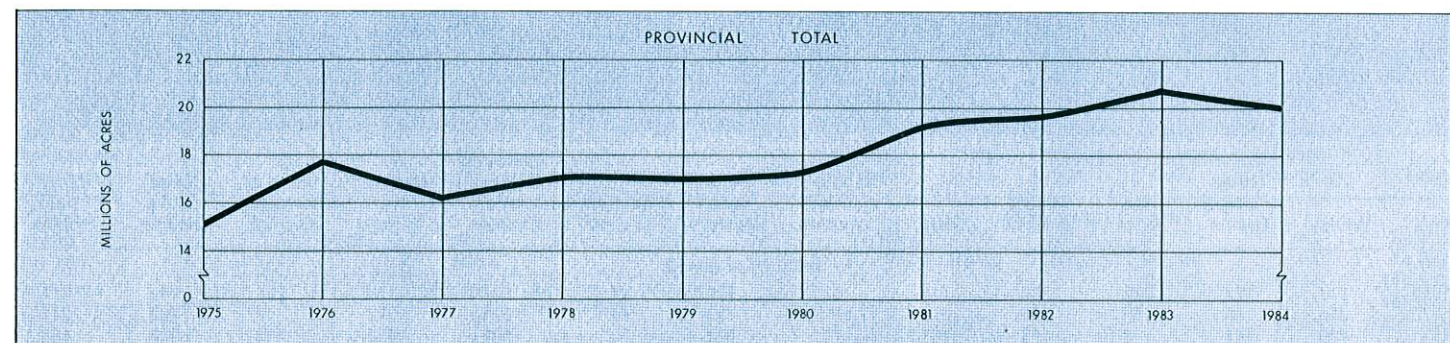
Table 38: Farm Operating Expenses and Depreciation Charges, Saskatchewan



	1974	1975	1976	1977	1978	1979	1980	1981	1982	1983	1984	1975-1984 Average
millions of dollars												
Taxes ¹	33.0	36.1	43.1	45.3	48.9	53.3	60.7	69.1	80.5	86.1	83.4	
Gross Farm Rent	73.7	87.9	102.6	109.2	121.5	152.5	216.0	236.5	244.1	257.1	227.3	
Wages to Farm Labour	46.2	58.4	65.6	67.8	66.3	76.5	98.8	124.0	142.0	158.2	169.6	
Interest on Indebtedness	87.8	101.1	131.9	141.2	177.2	253.6	295.1	448.7	440.3	416.8	455.3	
Total Machinery Expenses	225.1	255.2	289.3	320.4	360.1	395.8	442.7	568.1	639.4	685.7	721.5	
Fuel	89.3	100.7	127.5	150.3	171.1	188.5	214.9	296.1	358.7	388.5	406.8	
Machinery Repairs and Other Machinery Expenses	135.9	154.4	161.8	170.0	189.0	207.3	227.8	272.0	280.7	297.2	314.8	
Fertilizer and Lime	35.1	56.8	56.6	61.6	101.6	142.9	166.1	198.9	212.9	266.7	276.3	
Other Crop Expenses	51.2	62.7	70.6	83.5	111.2	139.7	142.3	178.5	194.9	231.4	242.6	
Feed	47.6	40.6	42.9	43.3	43.5	62.1	85.3	100.1	86.9	67.0	76.0	
Other Livestock Expenses	12.2	12.2	14.7	14.0	24.1	41.7	34.9	34.3	31.4	35.4	22.5	
Repairs to Buildings	24.1	29.4	33.9	27.1	30.0	31.6	31.4	38.2	35.3	35.6	35.5	
Electricity and Telephone	24.6	26.7	29.7	33.7	38.4	44.0	44.9	43.7	50.0	53.7	59.9	
Miscellaneous	65.9	82.9	109.1	119.0	126.8	153.0	179.4	200.0	215.6	240.5	240.3	
Total Operating Expenses	726.6	850.0	990.0	1,066.2	1,249.6	1,546.6	1,797.7	2,240.1	2,373.3	2,534.2	2,610.2	
Depreciation on Buildings	15.6	20.2	23.9	27.1	32.7	38.8	53.0	61.0	64.6	61.9	58.0	
Depreciation on Machinery	184.6	253.4	318.5	355.7	409.0	474.5	544.8	606.9	634.0	646.1	655.8	
Total Operating Expenses and Depreciation	926.8	1,123.6	1,332.5	1,449.0	1,691.3	2,059.9	2,359.4	2,908.1	3,071.9	3,242.2	3,324.0	

¹Owned land and buildings only.
Source: Statistics Canada 21-202, *Farm Net Income*, and Special Tabulations.

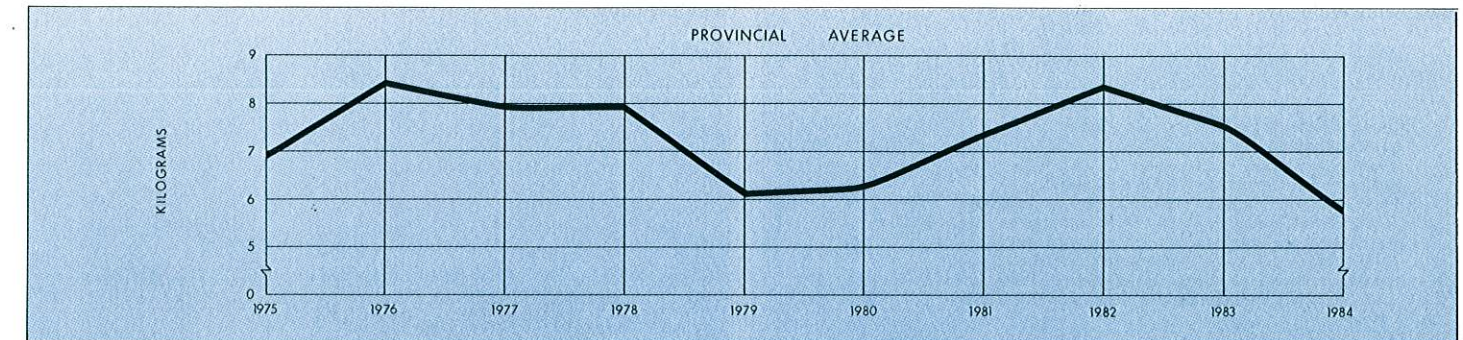
Table 39: Acreage Sown to Wheat by Crop District, Saskatchewan



Crop District ¹	1974	1975	1976	1977	1978	1979	1980	1981	1982	1983	1984	1975-1984 Average
thousands of acres												
1. South-East	1,071	1,162	1,439	1,291	1,499	1,474	1,496	1,682	1,706	1,840	1,908	1,550
2. Regina-Weyburn	1,655	1,801	2,005	1,934	2,026	1,959	1,929	2,126	2,119	2,240	2,270	2,041
3. South-Central	3,481	3,558	3,853	3,689	3,898	3,933	3,810	3,948	3,883	4,111	4,063	3,875
4. South-West	980	993	1,060	1,047	1,083	1,094	1,031	1,120	1,111	1,157	1,141	1,084
5. East-Central	1,644	1,810	2,239	2,056	2,221	2,083	2,281	2,631	2,683	2,671	2,779	2,345
6. Central	2,156	2,212	2,630	2,408	2,477	2,511	2,589	2,744	2,863	2,986	2,924	2,634
7. West-Central	1,637	1,719	1,914	1,701	1,834	1,904	1,840	2,045	2,015	2,200	2,137	1,931
8. North-East	920	956	1,373	1,106	1,134	1,081	1,292	1,543	1,610	1,702	1,172	1,297
9. North-West	956	989	1,187	968	928	961	1,132	1,511	1,610	1,793	1,656	1,273
Provincial Total	14,500	15,200	17,700	16,200	17,100	17,000	17,400	19,350	19,600	20,700	20,050	18,030

¹See map, Page 30.
Source: Statistics Canada 21-003, *Quarterly Bulletin of Agricultural Statistics*; 22-002, *Field Crop Reporting Series*.

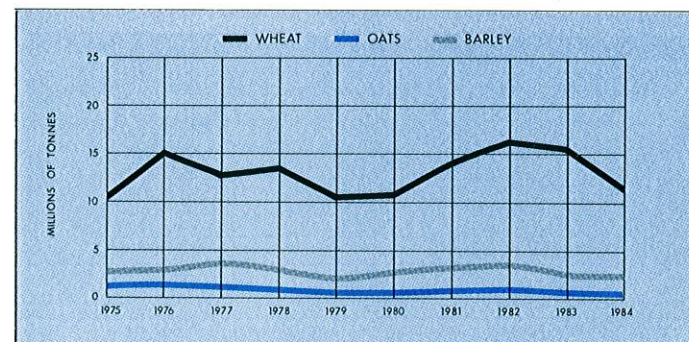
Table 40: Average Wheat Yields by Crop District, Saskatchewan



Crop District ¹	1974	1975	1976	1977	1978	1979	1980	1981	1982	1983	1984	1975-1984 Average
kilograms per acre												
1. South-East	595	648	673	819	881	500	570	726	706	637	507	667
2. Regina-Weyburn	492	615	841	878	857	572	496	702	812	701	500	697
3. South-Central	511	675	859	772	757	608	609	669	866	700	445	696
4. South-West	576	707	728	545	640	699	657	708	812	797	441	673
5. East-Central	552	711	877	837	870	431	617	948	775	733	735	753
6. Central	568	666	853	807	766	588	554	710	889	818	540	719
7. West-Central	684	773	893	741	750	779	716	795	949	883	617	790
8. North-East	628	755	940	882	876	617	762	774	852	733	767	796
9. North-West	682	764	888	800	762	698	784	754	834	812	747	784
Provincial Average	571	693	847	793	796	610	622	738	839	753	573	726

¹See map, Page 30.
Source: Statistics Canada 21-003, *Quarterly Bulletin of Agricultural Statistics*, and *Saskatchewan Agriculture*.

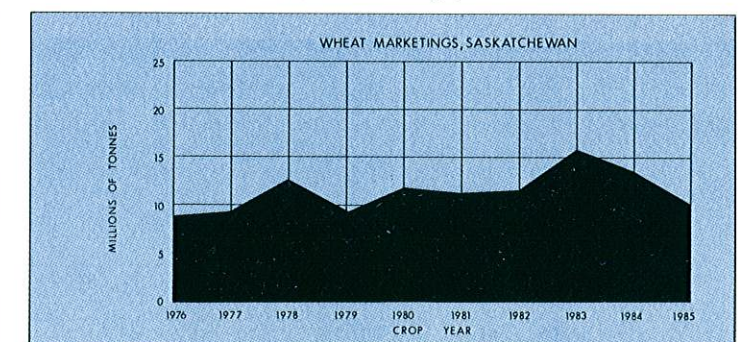
Table 41: Production of Principal Field Crops, Saskatchewan



Crop Year Ending	Wheat	Oats	Barley	Rye	Flax	Canola
thousands of tonnes						
1970	12,193	1,558	2,373	177	287	413
1971	5,715	1,650	3,092	228	653	896
1972	9,389	1,712	5,487	285	328	1,157
1973	8,872	1,218	3,854	127	229	563
1974	10,070	1,527	3,571	125	226	544
1975	8,274	1,157	2,918	176	119	526
1976	10,532	1,326	2,830	191	150	839
1977	14,996	1,388	2,961	180	86	388
1978	12,846	1,234	3,723	152	272	839
1979	13,608	941	2,918	236	203	1,452
1980	10,206	632	1,960	204	259	1,281
1981	10,940	617	2,787	108	147	998
1982	14,288	817	3,331	330	150	760
1983	16,438	956	3,636	391	234	794
1984	15,296	648	2,504	348	119	1,089
1985	11,485	478	2,460	230	224	1,315

Source: Statistics Canada 21-516, *Handbook of Agricultural Statistics, 1921-1974*; 22-002, *Field Crop Reporting Series*.

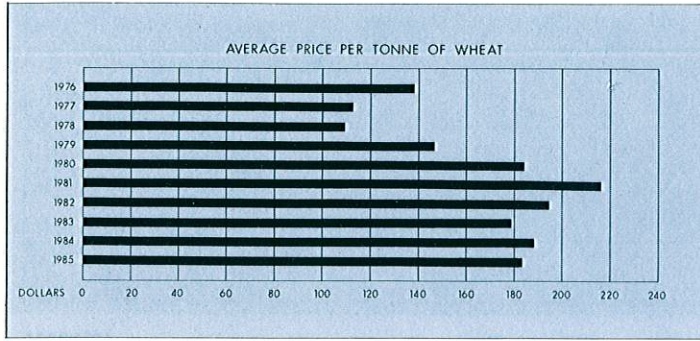
Table 42: Producer Grain Marketings, Saskatchewan



Crop Year Ending	Wheat	Oats	Barley
thousands of tonnes			
1972	9,610	183	3,310
1973	12,131	134	2,169
1974	9,759	193	2,250
1975	7,625	208	1,752
1976	9,241	239	1,601
1977	9,574	210	1,795
1978	13,016	203	1,728
1979	9,646	108	1,838
1980	12,056	59	1,598
1981	11,525	87	1,881
1982	11,839	98	2,091
1983	15,971	69	2,085
1984	13,822	93	2,094
1985	10,427	41	1,440

Source: Statistics Canada 22-201, *Grain Trade of Canada*; 22-005, *The Wheat Review*; 22-001, *Coarse Grains Review*; *Canadian Grain Commission*.

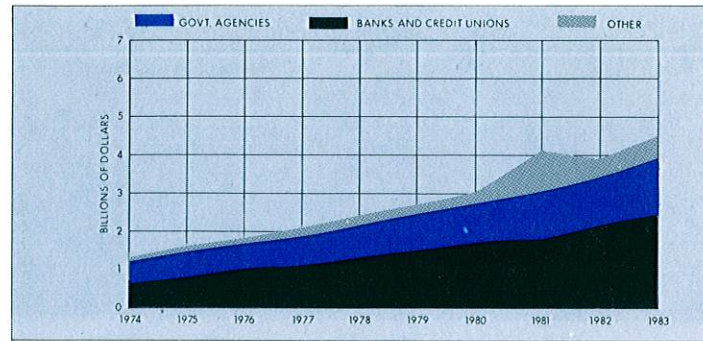
Table 43: Estimated Farm Price of Principal Grains, Saskatchewan



Crop Year Ending	Wheat	Oats	Barley	Flax	Rye	Canola
average price per tonne						
1972	51.70	36.64	32.98	88.97	33.78	97.44
1973	71.21	60.63	59.11	155.51	61.34	144.62
1974	171.34	107.64	118.64	363.05	103.81	253.62
1975	162.33	99.21	104.17	378.21	90.04	314.69
1976	138.16	96.81	112.99	266.52	108.07	230.16
1977	112.66	77.68	95.03	277.94	89.17	280.76
1978	109.73	69.22	84.28	225.14	95.86	295.36
1979	146.88	73.12	89.37	292.65	114.00	291.39
1980	184.36	98.41	118.77	311.51	156.92	278.43
1981	216.11	128.71	154.52	353.31	184.22	292.54
1982	194.83	117.17	139.19	337.12	154.88	295.12
1983	179.04	97.53	116.38	262.79	93.30	281.79
1984	188.27	116.37	136.50	335.04	118.45	396.04
1985 ¹	183.63	113.22	134.02	323.28	109.59	362.28

¹Saskatchewan Bureau of Statistics preliminary estimate, including final payment.
Source: Saskatchewan Bureau of Statistics and Saskatchewan Agriculture.

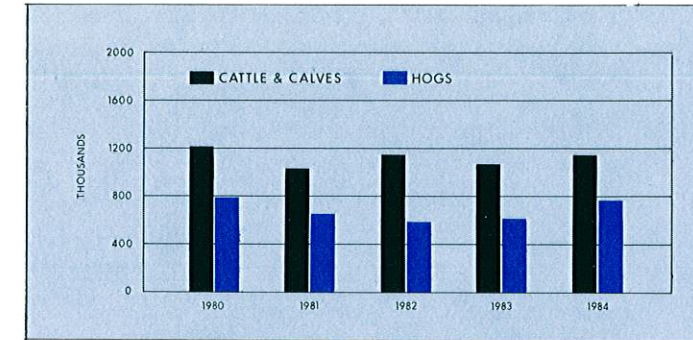
Table 44: Outstanding Farm Debt as of December 31, Saskatchewan



Year	Banks & Credit Unions	Fed. Gov't Agencies	Prov. Gov't Agencies	Insur. Trust & Loan Co.	Private Indiv. & Others	Total
millions of dollars						
1972	412.6	388.0	3.2	15.7	130.3	949.8
1973	542.8	433.3	3.5	16.6	126.6	1,122.8
1974	635.1	481.8	31.3	14.9	146.6	1,309.7
1975	789.0	541.0	46.0	13.7	181.6	1,571.3
1976	975.7	602.6	51.8	13.4	199.7	1,843.2
1977	1,067.8	691.9	60.7	13.4	223.0	2,056.8
1978	1,298.1	755.9	76.6	19.1	249.0	2,398.7
1979	1,548.1	816.2	73.4	21.2	263.2	2,722.1
1980	1,677.2	903.0	100.4	21.6	273.8	2,976.0
1981	1,841.7	985.5	129.5	42.2	408.1	4,063.4
1982	2,206.1	1,052.6	144.8	38.6	456.0	3,898.1
1983	2,485.6	1,316.5	144.8	26.0	501.9	4,474.8

Source: Statistics Canada, Special Tabulations.

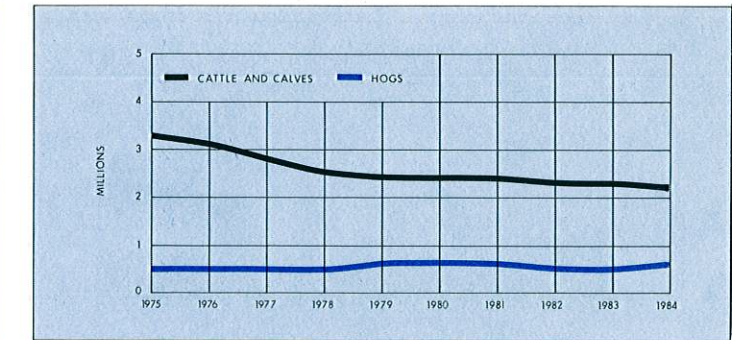
Table 46: Livestock Marketings, Saskatchewan



Year	Cattle & Calves		Sheep & Lambs		Hogs		
	numbers in thousands	value in \$'000	numbers in thousands	value in \$'000	numbers in thousands	value in \$'000	
1971	555	229	29	1,255	169,525	968	47,465
1972	630	244	40	1,103	218,174	1,031	60,173
1973	583	233	37	1,086	272,584	1,080	90,119
1974	602	346	25	1,034	305,628	1,608	76,820
1975	745	222	16	617	318,449	1,698	64,501
1976	957	271	17	535	330,339	1,945	55,571
1977	1,075	430	11	534	350,386	1,430	51,110
1978	904	456	9	557	463,321	1,507	67,987
1979	748	362	11	625	509,142	1,679	74,697
1980	793	425	13	787	553,916	1,679	76,505
1981	723	324	11	665	456,617	1,681	79,186
1982	819	332	15	590	523,572	1,935	90,190
1983	770	298	15	606	464,021	2,137	77,909
1984	814	337	16	769	525,472	2,291	97,615

Source: Statistics Canada 21-202, Farm Net Income; Canada Department of Agriculture, Livestock Market Review; Saskatchewan Agriculture.

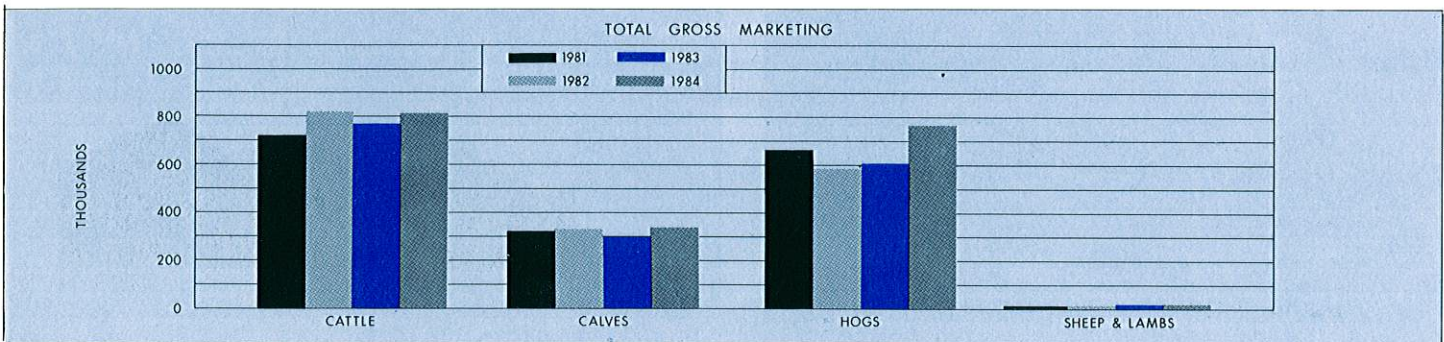
Table 47: Livestock Population, Saskatchewan



Year ¹	Milk Cows			Total Cattle and Calves	Hogs	Sheep and Lambs
	Calves	Other Cattle	number in thousands			
1971	112	884	1,649	2,645	1,090	145
1972	103	944	1,764	2,811	927	134
1973	96	1,013	1,823	2,932	920	123
1974	88	1,035	2,079	3,202	795	109
1975 ²	81	1,063	2,201	3,345	492	96
1976 ²	88	1,006	1,986	3,080	497	83
1977 ²	89	948	1,743	2,780	500	75
1978 ²	90	850	1,555	2,495	520	68
1979 ²	82	822	1,521	2,425	600	66
1980 ²	84	832	1,499	2,415	640	73
1981 ¹	85	874	1,442	2,401	560	76
1982 ²	86	833	1,431	2,350	500	75
1983 ²	85	821	1,369	2,275	545	68
1984 ²	85	802	1,347	2,234	635	66

¹As at June 1.
²As at July 1.
Source: Statistics Canada 23-004 and 23-005, Report on Livestock Surveys; 23-203, Livestock and Animal Products Statistics; 21-003, Quarterly Bulletin of Agricultural Statistics.

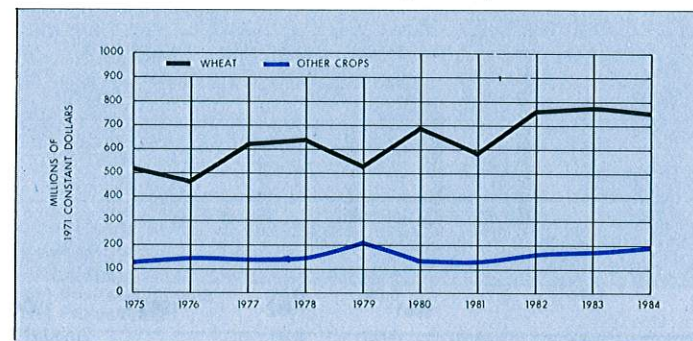
Table 45: Gross Marketings of Livestock by Crop District, Saskatchewan



Crop District ¹	Cattle					Calves					Hogs				
	1980	1981	1982	1983	1984	1980	1981	1982	1983	1984	1980	1981	1982	1983	1984
numbers in thousands															
1	81.9	72.1	89.1	82.1	84.1	43.9	32.3	36.0	31.8	34.9	59.7	47.3	39.5	40.4	48.2
2	53.3	47.6	50.8	46.8	56.8	28.6	21.3	20.5	18.1	23.6	23.3	18.7	13.9	15.8	22.9
3A	79.5	73.5	74.9	70.2	80.3	42.9	32.9	30.2	27.2	33.3	16.1	11.4	7.9	7.7	10.7
3B	62.1	59.1	69.5	66.3	71.8	33.2	26.5	28.1	25.7	29.8	59.5	47.3	36.4	41.5	52.3
4	66.8	66.0	81.2	78.9	90.3	35.8	29.5	32.8	30.6	37.4	45.1	44.9	43.9	43.9	48.5
5	99.6	85.2	110.5	100.2	101.2	53.3	38.1	44.6	38.8	42.0	75.0	55.9	45.5	42.6	54.8
6	89.6	85.6	94.1	85.3	89.6	48.0	38.3	38.0	33.0	37.2	148.7	134.1	121.3	121.3	148.2
7	68.1	62.0	57.0	57.1	58.3	36.5	27.7	23.0	22.1	24.2	64.9	57.2	63.8	66.4	73.7
8	42.3	36.2	42.7	39.1	38.3	22.6	16.2	17.2	15.1	15.9	195.6	166.7	145.9	159.2	205.3
9	136.9	128.9	143.0	138.4	139.0	73.3	57.7	57.8	53.6	57.7	87.0	71.2	65.2	67.2	84.4
Unspecified and Other Provinces	12.8	6.9	7.2	5.6	3.9	6.9	3.2	2.9	2.2	1.6	11.8	10.1	6.2	—	20.4
Total	792.9	723.1	820.0	770.0	813.7	425.0	323.7	331.1	298.2	337.6	786.9	664.8	589.5	606.0	769.4

¹See map, Page 30.
Source: Saskatchewan Agriculture.

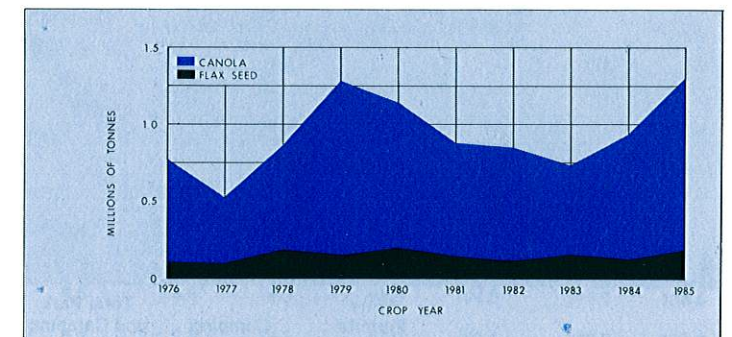
Table 48: Saskatchewan Grain Exports by Destination



Year	Wheat		Other Grains		Total Grains	
	Inside Canada	Abroad	Inside Canada	Abroad	Inside Canada	Abroad
millions of 1971 Constant dollars						
1974	77	401	41	65	118	466
1975	84	424	46	80	130	504
1976	51	406	49	98	100	504
1977	41	571	46	90	87	661
1978	67	564	51	93	118	657
1979	97	421	70	134	167	555
1980	122	563	48	79	170	642
1981	78	494	33	91	111	585
1982	95	654	53	104	148	758
1983	95	667	57	111	152	778
1984	92	648	67	121	159	769

Source: Saskatchewan Economic Accounts.

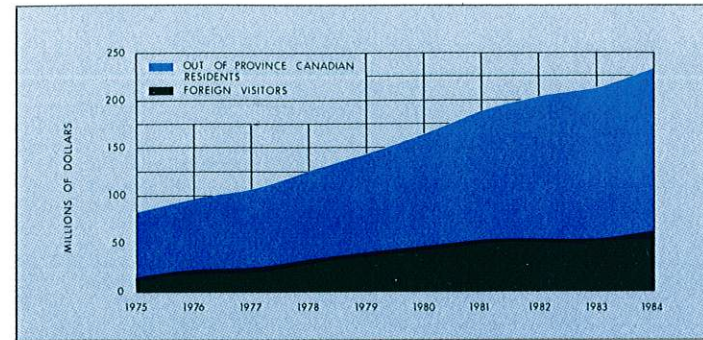
Table 49: Oilseeds Marketing, Saskatchewan



Crop Year Ending	Flaxseed		Canola	Total
	Flaxseed	Canola		
thousands of tonnes				
1975	99	445	544	
1976	143	622	765	
1977	91	437	528	
1978	185	679	864	
1979	152	1,130	1,282	
1980	206	944	1,150	
1981	146	731	877	
1982	122	730	852	
1983	160	576	736	
1984	123	802	925	
1985	191	1,094	1,285	

Source: Statistics Canada 22-006, Oilseeds Review; Canadian Grain Commission.

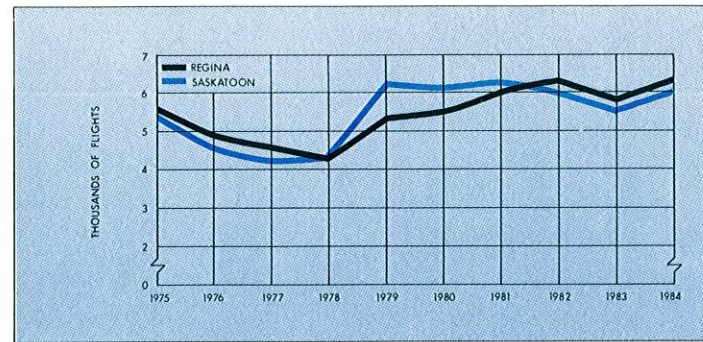
Table 50: Saskatchewan Receipts from Out Of Province Canadian Residents and Foreign Visitors



Year	Purchases of Goods and Services		Total Receipts
	Foreign Visitors ¹	Out of Province Canadian Visitors	
		millions of dollars	
1973	17	47	63
1974	14	56	69
1975	16	65	82
1976	23	74	97
1977	24	82	106
1978	33	92	125
1979	40	104	144
1980	46	118	164
1981	52	137	189
1982	52	151	203
1983	53	159	212
1984	61	171	232

¹Includes residents of United States and overseas countries. Source: Saskatchewan Economic Accounts.

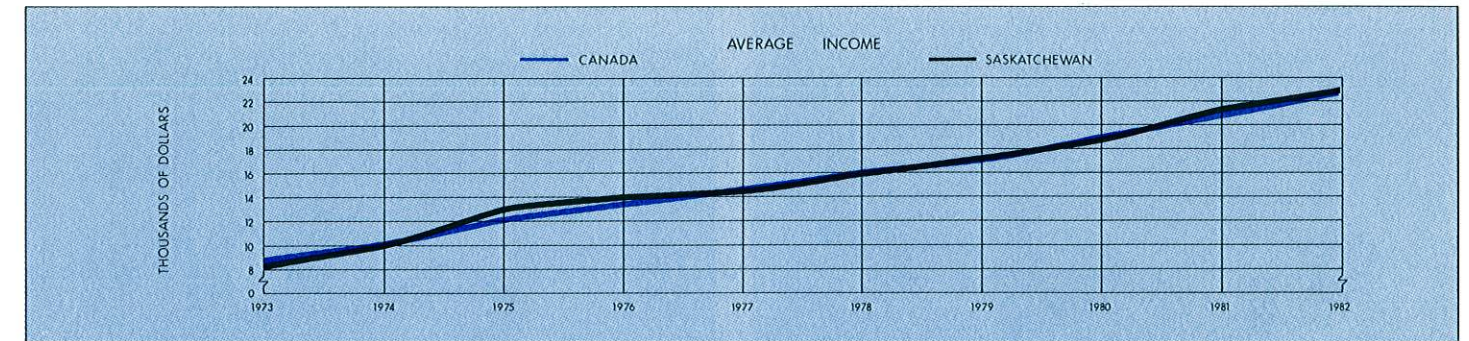
Table 51: Air Traffic—Inbound and Outbound Passengers



Year	Regina Airport			Saskatoon Airport		
	Number of flights	En-planed	De-planed	Number of flights	En-planed	De-planed
		number ('000)			number ('000)	
1973	4,471	196.1	196.3	4,920	164.0	168.5
1974	5,158	230.2	228.6	5,382	193.1	192.9
1975	5,567	248.0	249.4	5,431	212.0	212.8
1976	4,920	242.5	243.4	4,453	201.6	202.0
1977	4,552	241.2	242.0	4,227	205.7	206.4
1978	4,261	245.9	245.5	4,270	212.1	212.5
1979	5,428	296.5	298.3	6,159	283.7	283.1
1980	5,455	311.8	313.0	6,101	306.1	306.3
1981	6,037	310.6	311.1	6,348	301.7	302.8
1982	6,298	293.9	292.5	5,988	280.3	279.8
1983	5,803	277.3	276.1	5,535	262.6	262.3
1984 ¹	6,304	290.6	289.5	6,030	281.0	282.1

¹Preliminary. Source: Statistics Canada 51-203, *Airport Activity Statistics*.

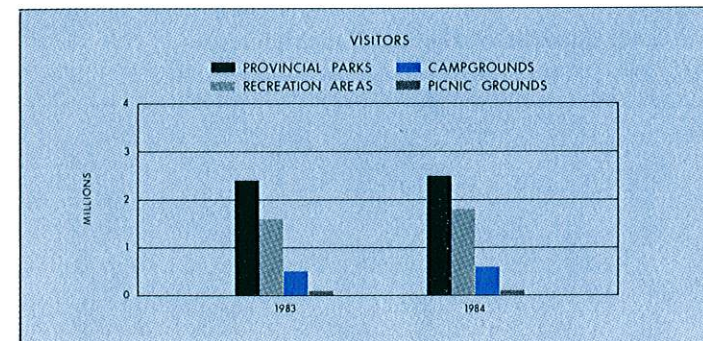
Table 54: Income Tax Statistics by Age Group, Saskatchewan and Canada



	Saskatchewan				Canada			
	1973		1982		1973		1982	
	Number of Returns	Average Income	Number of Returns	Average Income	Number of Returns	Average Income	Number of Returns	Average Income
		\$		\$		\$		\$
Taxable Returns by Age Group								
19 and under	17,231	3,478	13,013	10,291	447,258	3,845	237,679	10,268
20-24	45,051	5,344	58,857	15,526	1,337,558	5,717	1,392,139	14,273
25-29	32,534	7,445	53,752	20,387	1,237,970	7,938	1,531,593	19,301
30-34	26,337	8,908	41,494	23,757	909,512	9,483	1,363,057	23,123
35-39	25,236	9,514	34,905	26,005	789,286	10,297	1,233,047	25,618
40-44	25,710	10,025	29,871	26,228	786,182	10,700	960,957	26,914
45-49	27,446	9,937	27,310	27,701	751,300	10,696	820,986	27,363
50-54	26,366	9,842	29,025	26,890	699,761	10,341	817,181	27,321
55-59	25,338	9,345	28,503	26,384	557,026	9,874	705,123	26,837
60-64	20,361	8,545	24,282	26,857	446,410	9,246	561,246	25,607
65-69	12,361	8,198	17,978	26,427	253,496	8,537	346,735	24,448
70 +	16,430	7,356	23,962	23,596	275,436	7,841	457,012	23,732
Not stated	63	5,428	119	18,748	3,324	5,706	1,271	16,086
Total	300,464	8,124	383,071	22,984	8,494,519	8,665	10,428,026	22,850

Source: Revenue Canada, *Taxation Statistics*

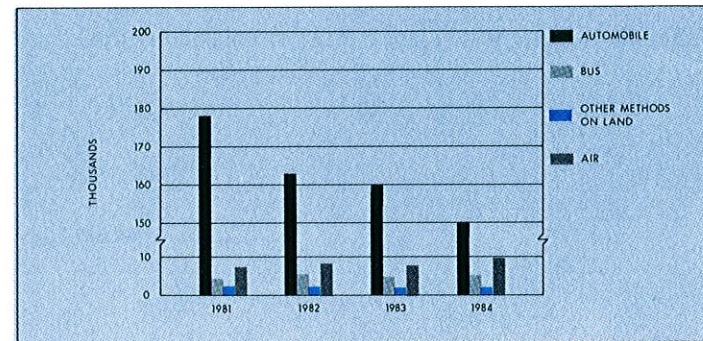
Table 52: Visitations at Provincial Parks and Recreation Areas



	Visitors		Entry Permits Issued		Camping Revenue		Total Park and Camping Revenue	
	1983	1984	1983	1984	1983	1984	1983	1984
	number in thousands						\$'000	
Provincial Parks	2,423	2,470	150	150	1,210	1,218	2,049	2,072
Recreation Areas	1,625	1,820	17	15	342	357	419	438
Campgrounds	477	562	3	—	187	184	203	184
Picnic Grounds	120	81	—	—	—	—	—	—
Total	4,645	4,964	170	165	1,740	1,759	2,671	2,694

Source: Saskatchewan Department of Parks and Renewable Resources.

Table 53: United States Visitors Entering Saskatchewan by Type of Transportation



	number			
	1981	1982	1983	1984
Land				
Automobile	178,459	163,032	159,839	148,892
Same day	95,512	83,610	84,469	76,472
One or more nights	82,947	79,422	75,370	72,420
Bus	4,451	5,534	4,828	5,011
Same day	1,005	1,261	1,180	1,262
One or more nights	3,446	4,273	3,648	3,749
Other methods	2,623	2,477	2,316	2,308
Total Land	185,533	171,043	166,983	156,211
Air				
Commercial	3,597	5,000	4,628	6,486
Private	4,229	3,727	3,459	3,439
Total Air	7,826	8,727	8,087	9,925
Grand Total	193,359	179,770	175,070	166,136

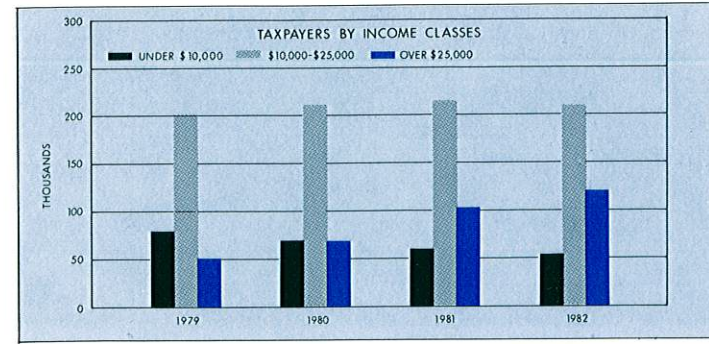
Source: Statistics Canada 66-001, *Travel Between Canada and Other Countries*.

Table 55: Source of Income on Basis of Income Tax Returns, Saskatchewan, 1982

Sources of Income	Regina		Saskatoon		Moose Jaw		Prince Albert		Other Areas		Total	
	Taxable	All	Taxable	All	Taxable	All	Taxable	All	Taxable	All	Taxable	All
	millions of dollars											
Wages and Salaries	1,403.3	1,453.6	1,286.8	1,338.3	256.8	268.1	230.6	243.4	2,228.6	2,404.0	5,406.2	5,707.4
Commissions & Other												
Employment Earnings	43.6	45.0	39.7	42.9	4.9	5.7	3.7	3.8	35.7	38.8	127.7	136.3
U.I.C. Benefits	22.1	25.7	27.0	33.6	6.7	8.9	5.8	8.3	64.7	83.4	126.3	159.9
Old Age Pension	18.4	26.1	17.2	24.9	5.9	9.1	3.0	5.3	68.3	114.3	112.9	179.8
Family Allowance	12.5	14.6	11.6	13.8	2.7	3.4	2.9	3.8	38.8	55.4	68.6	91.1
Superannuation or Pension	54.8	62.9	47.1	54.1	15.0	17.7	7.4	9.5	98.0	127.9	222.4	272.1
Net Business Income	24.0	26.0	17.5	17.8	4.8	5.5	4.4	4.5	93.9	104.8	144.5	158.6
Net Professional Income	49.2	50.7	40.7	42.4	6.0	6.2	7.8	8.2	57.2	60.1	160.9	167.6
Net Commission Income	4.8	5.3	2.9	3.3	0.7	0.7	0.9	0.9	7.4	7.5	16.7	17.7
Net Farming or Fishing Income	28.0	29.0	15.8	13.8	12.0	10.9	5.6	6.2	734.2	764.2	795.7	824.1
Taxable Amount of Dividends	65.7	71.4	65.8	75.9	10.8	11.6	11.4	13.5	143.1	168.0	296.9	340.4
Bond, Bank & Mortgage Interest	152.2	167.1	134.0	149.4	36.9	41.4	24.7	28.3	575.9	647.3	923.7	1,033.6
Trusts & Annuity	20.1	21.0	17.2	18.5	6.9	7.1	1.6	1.8	86.4	92.3	132.2	140.8
Foreign & Canadian Investment	2.4	2.7	2.6	3.0	0.6	0.7	0.5	0.7	19.6	23.2	25.7	30.3
Net Rental Income	-8.3	-9.9	-2.6	-5.2	2.0	2.3	0.4	0.3	22.1	26.1	13.6	13.6
Net Taxable Capital Gains	10.4	11.2	14.9	16.7	3.4	3.8	1.2	1.5	93.3	107.8	123.3	141.0
Miscellaneous Income	26.6	29.4	24.8	30.4	4.1	4.7	3.6	4.4	47.9	58.2	107.0	127.2
Total Income Assessed	1,930.2	2,031.8	1,762.9	1,873.8	380.4	407.8	315.7	344.5	4,415.2	4,883.3	8,804.4	9,541.2

Source: Revenue Canada, *Taxation Statistics*

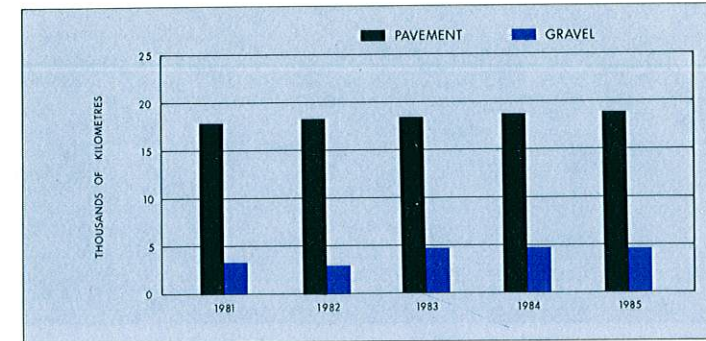
Table 56: Distribution of Taxpayers by Income Groups, Saskatchewan



Income Classes	1979	1980	1981	1982
	number of returns			
Under \$2,000	28	—	—	—
\$2,000 to \$3,000	313	33	32	—
\$3,000 to \$4,000	1,401	1,237	531	246
\$4,000 to \$5,000	1,605	707	338	496
\$5,000 to \$10,000	76,375	67,946	60,442	52,900
\$10,000 to \$25,000	199,591	209,466	212,740	207,824
\$25,000 and over	51,046	69,663	103,482	121,605
Total taxable returns	330,359	349,052	377,565	383,071
Non-taxable returns	204,714	201,548	188,093	189,609
Total All Returns	535,073	550,600	565,658	572,680

Source: Revenue Canada, *Taxation Statistics*.

Table 57: Provincial Highways by Surface Type, Saskatchewan¹



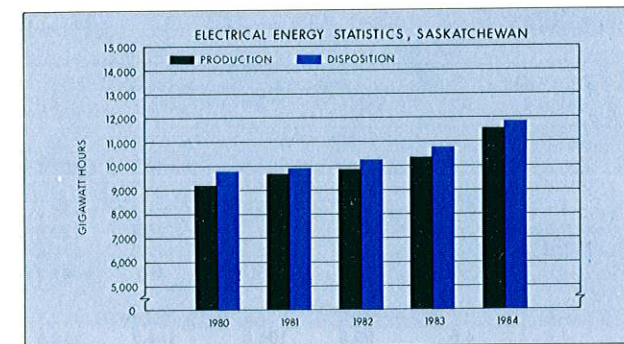
Year ²	Pavement			Total
	Four-Lane Divided	Two-Lane	Gravel	
	number of kilometres			
1973	414	13,432	4,955	18,801
1974	450	14,296	4,641	19,387
1975	450	14,817	4,811	20,078
1976	530	15,299	4,653	20,482
1977	558	16,008	4,014	20,580
1978	585	16,470	3,553	20,608
1979	623	16,719	3,442	20,784
1980	629	17,004	3,311	20,944
1981	629	17,302	3,282	21,213
1982	629	17,710	2,990	21,329
1983	639	17,886	4,663	23,188
1984	665	18,050	4,689	23,404
1985	678	18,147	4,600	23,425

¹Maintained by the Department of Highways.

²As at April 1.

Source: Saskatchewan Department of Highways and Transportation.

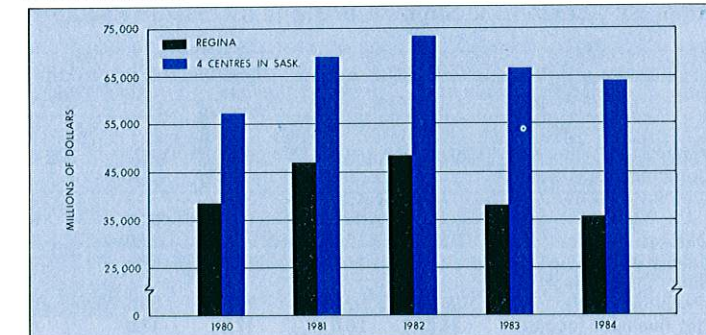
Table 58: Electric Energy Statistics, Saskatchewan



	1981	1982	1983	1984
	GWh			
Supply				
Production	9,683	9,846	10,389	11,546
Inter-regional transfers	248	390	402	272
Total Supply	9,931	10,236	10,791	11,818
Disposition				
Manufacturing	1,265	1,092	1,129	1,320
Mining	1,772	1,622	1,708	2,044
Pipelines	366	406	505	618
Public Administration	115	121	121	125
Street Lighting	72	73	75	80
Commercial/Institutional	2,231	2,182	2,512	2,481
Residential	1,932	2,109	2,170	2,315
Agriculture	1,146	1,314	1,308	1,382
Producer Consumption	1,032	1,317	1,263	1,453
Total Disposition	9,931	10,236	10,791	11,818

Source: Statistics Canada 57-202, *Electric Power Statistics*, Volume II.

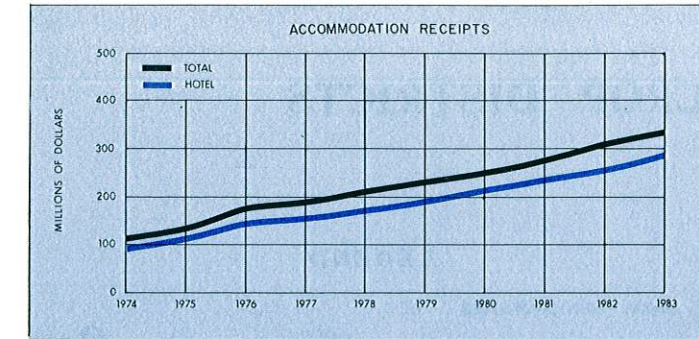
Table 59: Cheques Cashed in Clearing Centres, Saskatchewan



Year	Moose Jaw	Prince Albert	Regina	Saskatoon	Total
	millions of dollars				
1972	506	648	12,647	3,361	17,162
1973	626	705	14,759	4,221	20,311
1974	738	835	17,748	4,939	24,260
1975	888	954	21,491	5,776	29,109
1976	1,053	1,146	25,442	7,123	34,764
1977	1,135	1,304	27,277	8,408	38,124
1978	1,302	1,562	28,652	9,402	40,918
1979	1,628	1,784	32,494	11,190	47,097
1980	1,790	2,056	38,724	14,867	57,437
1981	2,249	2,566	47,080	17,328	69,223
1982	2,325	2,454	48,391	20,354	73,523
1983	2,562	2,531	38,144	23,545	66,782
1984	2,364	2,812	35,562	23,514	64,252

Source: Statistics Canada 61-201, and 61-001, *Cheques Cashed in Clearing Centres*.

Table 60: Number of Locations and Total Receipts for Major Accommodation Groups, Saskatchewan

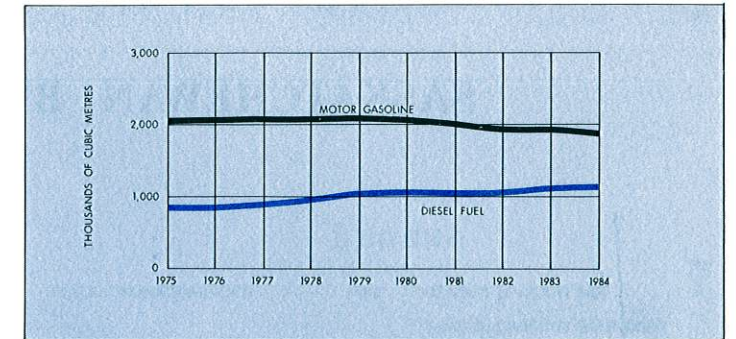


Year	1979	1980	1981	1982	1983
Hotels					
Number	459	450	460	457	459
Receipts (\$'000)	190,964	215,269	235,880	255,586	287,590
Motels					
Number	157	155	160	162	162
Receipts (\$'000)	21,785	20,575	22,449	27,813	29,039
Tent and Trailer Campgrounds					
Number	119	142	137	137	134
Receipts (\$'000)	6,091	5,146	7,678	8,745	9,143
Other¹					
Number	138	129	119	119	122
Receipts (\$'000)	8,958	9,545	9,830	10,012	10,211
Total					
Number	873	876	876	875	877
Receipts (\$'000)	227,798	250,805	275,837	302,156	335,982

¹Includes tourist courts, cabins and outfitters.

Source: Statistics Canada 63-204, *Traveller Accommodation Statistics*.

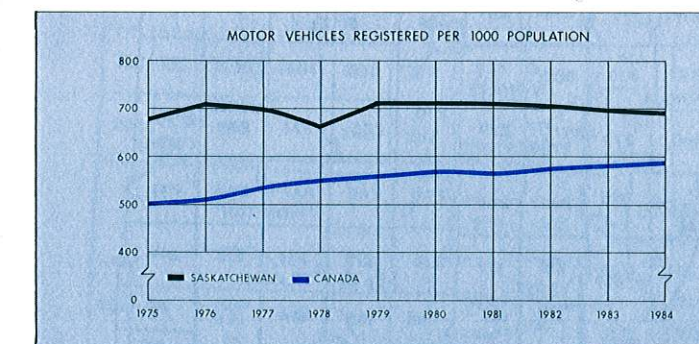
Table 61: Net Sales of Selected Petroleum Products, Saskatchewan



	1980	1981	1982	1983	1984
	thousands of m ³				
Propane & Propane Mixes	41	44	49	52	51
Butane & Butane Mixes	47	55	36	42	54
Motor Gasoline	2,059	2,000	1,905	1,908	1,874
Aviation Turbo Fuel	96	100	92	81	83
Kerosene Stove Oil	154	120	142	119	105
Fuel — Diesel	1,085	1,050	1,039	1,124	1,126
— Light	193	164	165	137	121
— Heavy	20	16	17	21	36
Asphalt	184	159	172	144	130
Coke	41	46	42	45	44
Other	72	76	123	65	63
Total All Products	3,992	3,830	3,782	3,738	3,687

Source: Statistics Canada 45-004, *Refined Petroleum Products*.

Table 62: Motor Vehicle Registrations, Saskatchewan

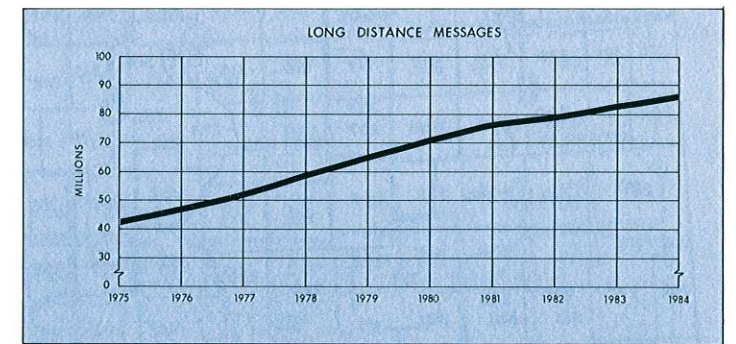


Year	Passenger Automobiles	Trucks and Power Units	Other Motor Vehicles ¹	Total Registrations
1971	277,690	171,787	15,447	464,924
1972	292,487	186,484	17,243	496,214
1973	304,885	199,524	19,148	523,557
1974	328,940	219,070	20,908	568,918
1975	348,855	241,632	22,782	613,269
1976	370,144	257,040	26,224	653,408
1977	425,049	207,474	21,923	654,446
1978	346,753	266,128	15,002	627,883
1979	366,164	298,652	18,065	682,881
1980	393,205	273,146	17,604	683,955
1981	391,743	282,646	17,634	692,023
1982	375,165	294,904	17,405	687,474
1983	381,934	295,171	17,267	694,372
1984	378,425	307,573	13,512	699,510

¹Includes motorcycles, government vehicles and buses.

Source: Statistics Canada 53-219, *The Motor Vehicle, Part III, Registrations*. Note: In 1977 light trucks used for non-commercial activities included with passenger automobiles.

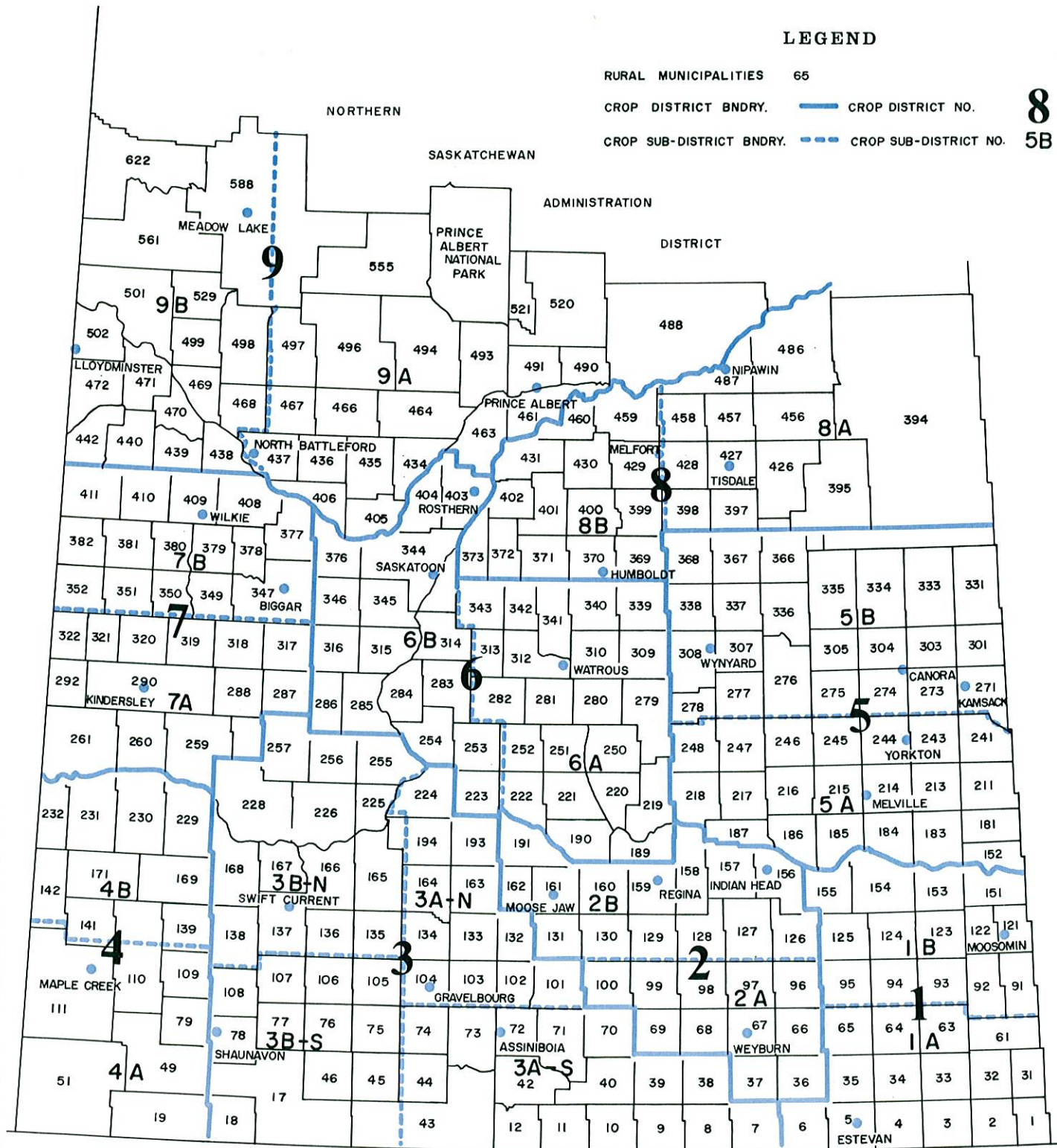
Table 63: Telephone Statistics, Saskatchewan



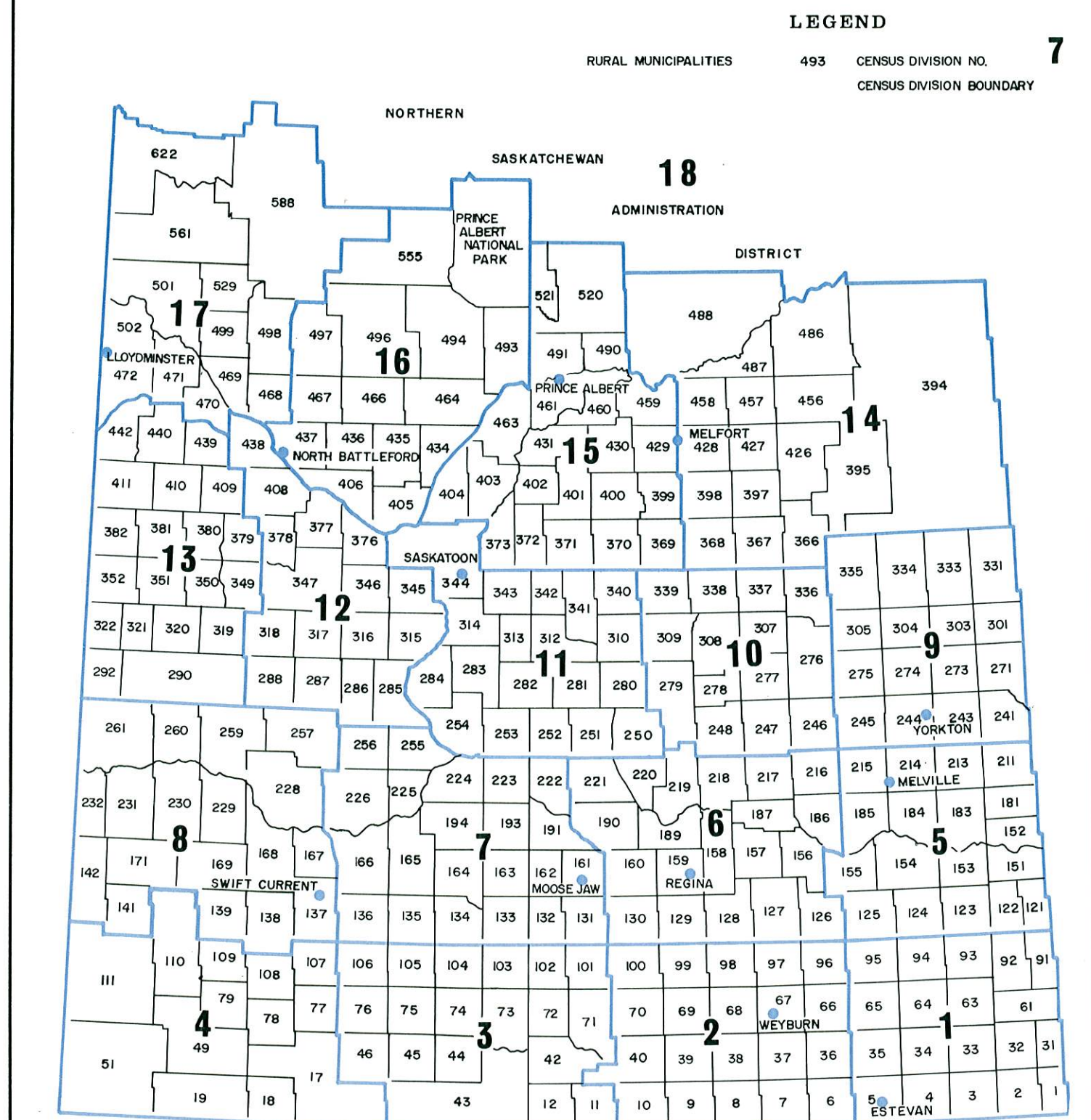
	1980	1981	1982	1983	1984
Telephones					
Sask Tel owned	618,614	652,009	677,963	695,964	711,465
Net Increase	34,158	33,395	25,954	18,001	15,501
Telephones per 1,000 population	645	673	692	700	706
Originated long distance messages ('000) by					
Telephone	70,728	77,108	79,451	82,994	86,177
Data and Other					
Voice Services	5,638	6,829	7,742	8,931	10,208
Total Messages	76,366	83,937	87,193	91,925	96,385
Total Number of Employees	4,339	4,564	4,578	4,400	4,382

Source: Saskatchewan Telecommunications Annual Report.

SASKATCHEWAN BY CROP DISTRICTS



SASKATCHEWAN BY CENSUS DIVISION



Saskatchewan Economic Accounts

The Saskatchewan Bureau of Statistics has developed a set of economic accounts which can be used to trace the development and growth of the Saskatchewan economy.

The purpose of the Accounts is to measure the value of economic activity in each sector of the economy. This is done by means of a balancing set of accounts similar to the annual income and expenditure statements of a commercial enterprise.

The Accounts have many useful functions. They consolidate information which is now provided through a number of scattered sources and organize it into a central framework. This allows many kinds of economic analysis to be performed ranging from monitoring current economic performance to analysis of structural change in the economy.

The Saskatchewan Bureau of Statistics has available, upon request, many more detailed tables and other information concerning the Saskatchewan Economic Accounts.

1984 Saskatchewan Economic Accounts

Saskatchewan Gross Domestic Product (GDP) measures the total value of goods and services in the province. By removing the effects of inflation, it is possible to measure the volume of output.

In 1984, the economy grew by 5.0 percent. After adjusting for inflation, however, growth as measured by GDP appears relatively flat, measuring a slight increase of 0.8 percent. This lack of growth is due entirely to the poor 1984 harvest, which in volume terms declined nearly 20 percent from 20 million tonnes in 1983 to 16 million tonnes in 1984. The poor crop drastically reduced farm income. Farm income would have been reduced further in 1984 had there not been substantial payouts from the Western Grain Stabilization Fund, Crop Insurance and a \$30 million disaster relief payment.

The volume of output for non-farm components of GDP increased a healthy 5.4 percent. This growth

was led by increased volumes of oil and uranium exports, which in turn reflected positively on income in the mining industry. In total, the volume of exports increased by 5.8 percent even though the volume of grain exports declined marginally. Imports fell slightly.

Government programs which directly affect the oil and gas industry contributed to the marginal growth in the volume of investment. The number of oil and gas wells drilled increased by more than 60 percent and off-set the decline in investment in agriculture.

The positive growth rate in the volume of economic output in 1984 despite the poor year in the agricultural sector indicates that Saskatchewan's economy is becoming diversified. The high growth rate for the non-agricultural GDP demonstrates the strength of Saskatchewan's economy.

Saskatchewan Economic Accounts 1974 to 1984

Index to Saskatchewan Economic Accounts

	Page
Table 1: Comparison of Gross Domestic Product — Saskatchewan and Canada	35
Table 2: Comparison of Saskatchewan Gross Domestic Product and Canada Gross National Expenditure — Constant (1971) Dollars	35
Table 3: Comparison of Personal Income — Saskatchewan and Canada	36
Table 4: Saskatchewan Gross Domestic Product at Market Prices, Consolidated Income Account — Current Dollars	36
Table 5: Saskatchewan Domestic Income — Percentage Distribution	37
Table 6: Saskatchewan Gross Domestic Product at Market Prices, Consolidated Outlay Account — Current Dollars	37
Table 7: Saskatchewan Gross Domestic Expenditure — Percentage Distribution	38
Table 8: Saskatchewan Personal Expenditure on Consumer Goods and Services	38
Table 9: Saskatchewan Exports by Commodity	39
Table 10: Saskatchewan Imports from Canada and Abroad	39
Table 11: Saskatchewan Real Gross Domestic Product — Constant (1971) Dollars	40
Table 12: Saskatchewan Gross Domestic Product — Constant (1971) Dollars — Percentage Distribution	40
Table 13: Saskatchewan Personal Expenditure on Consumer Goods and Services — Constant (1971) Dollars	41
Table 14: Saskatchewan Exports by Commodity — Constant (1971) Dollars	41
Table 15: Saskatchewan Imports from Canada and Abroad — Constant (1971) Dollars	42
Table 16: Saskatchewan Implicit Price Indexes, Gross Domestic Expenditure, 1971 = 100.0	42
Table 17: Saskatchewan Sources and Disposition of Personal Income	43
Table 18: Saskatchewan Personal Income by Source — Percentage Distribution	43
Table 19: Saskatchewan Gross Domestic Product at Factor Cost, by Industry	44
Table 20: Saskatchewan Gross Domestic Product at Factor Cost, by Industry — Percentage Distribution	44
Table 21: Saskatchewan Wages, Salaries and Supplementary Labour Income, by Industry	45
Table 22: Saskatchewan Wages, Salaries and Supplementary Labour Income, by Industry — Percentage Distribution	45
Table 23: Saskatchewan Gross Fixed Capital Formation by Industry on a Gross Domestic Product Basis	46
Table 24: Saskatchewan Gross Fixed Capital Formation by Industry on a Gross Domestic Product Basis — Percentage Distribution	46
Table 25: Saskatchewan Gross Fixed Capital Formation by Industry on a Gross Domestic Product Basis — Constant (1971) Dollars	47
Table 26: Saskatchewan Gross Fixed Capital Formation by Industry on a Gross Domestic Product Basis — Constant (1971) Dollars — Percentage Distribution	47
Table 27: Saskatchewan Government Current Expenditure on Goods and Services	48
Table 28: Saskatchewan Government Investment Income	48

Table 1: Comparison of Gross Domestic Product — Saskatchewan and Canada

	Gross Domestic Product (millions \$)		% Change in GDP		Sask. GDP as % of Canada GDP	Per Capita Gross Domestic Product		
	Sask.	Canada	Sask.	Canada		Sask. (\$)	Canada (\$)	Ratio
1952	1,594	24,912	22.6	13.1	6.4	1,891	1,723	1.10
1953	1,499	26,134	- 6.0	4.9	5.7	1,741	1,760	0.99
1954	1,170	26,257	-21.9	0.5	4.5	1,341	1,718	0.78
1955	1,465	28,913	25.1	10.1	5.1	1,668	1,842	0.91
1956	1,649	32,519	12.6	12.5	5.1	1,877	2,022	0.93
1957	1,472	34,076	-10.7	4.8	4.3	1,673	2,052	0.82
1958	1,620	35,302	10.0	3.6	4.6	1,818	2,067	0.88
1959	1,685	37,455	4.0	6.1	4.5	1,858	2,142	0.87
1960	1,831	38,975	8.7	4.1	4.7	2,001	2,181	0.92
1961	1,655	40,368	- 9.6	3.6	4.1	1,789	2,213	0.81
1962	2,112	43,698	27.6	8.2	4.8	2,271	2,352	0.97
1963	2,527	46,825	19.7	7.2	5.4	2,709	2,473	1.10
1964	2,381	51,188	- 5.8	9.3	4.7	2,527	2,654	0.95
1965	2,617	56,384	9.9	10.2	4.6	2,755	2,870	0.96
1966	3,060	62,976	16.9	11.7	4.9	3,204	3,146	1.02
1967	2,790	67,678	- 8.8	7.5	4.1	2,916	3,321	0.88
1968	2,926	73,837	4.9	9.1	4.0	3,048	3,567	0.85
1969	3,144	81,057	7.4	9.8	3.9	3,281	3,860	0.85
1970	3,027	87,071	- 3.7	7.4	3.5	3,216	4,088	0.79
1971	3,503	96,034	15.7	10.3	3.6	3,783	4,453	0.85
1972	3,705	106,785	5.8	11.2	3.5	4,054	4,898	0.83
1973	4,828	125,384	30.3	17.4	3.9	5,335	5,688	0.94
1974	6,316	149,883	30.8	19.5	4.2	7,017	6,702	1.05
1975	7,143	168,010	13.1	12.1	4.3	7,875	7,402	1.06
1976	7,921	195,539	10.9	16.4	4.1	8,601	8,504	1.01
1977	8,350	214,941	5.4	9.9	3.9	8,931	9,236	0.97
1978	9,519	238,368	14.0	10.9	4.0	10,089	10,136	1.00
1979	10,945	271,718	15.0	14.0	4.0	11,506	11,442	1.01
1980	12,959	305,668	18.4	12.5	4.2	13,507	12,714	1.06
1981	14,787	351,468	14.1	15.0	4.2	15,271	14,439	1.06
1982	14,975	371,235	1.3	5.6	4.0	15,295	15,071	1.01
1983	16,017	402,087	7.0	8.3	4.0	16,120	16,158	1.00
1984	16,817	435,876	5.0	8.4	3.9	16,670	17,349	0.96

Source: Saskatchewan Bureau of Statistics

Table 2: Comparison of Saskatchewan Gross Domestic Product and Canada Gross National Expenditure — Constant (1971) Dollars

	Sask. GDP (millions K\$)	Canada GNE (millions K\$)	% Change in		Sask. GDP as % of Canada GNE	Per Capita		
			Sask. GDP	Canada GNE		Sask. GDP (K\$)	Canada GNE (K\$)	Ratio
1952	2,176	38,617	14.4	12.1	5.6	2,581	2,671	0.97
1953	2,170	40,605	- 0.3	5.1	5.3	2,521	2,735	0.92
1954	1,849	40,106	-14.8	1.2	4.6	2,118	2,624	0.81
1955	2,143	43,891	15.9	9.4	4.9	2,441	2,796	0.87
1956	2,357	47,599	10.0	8.4	5.0	2,675	2,960	0.90
1957	2,130	48,718	- 9.6	2.4	4.4	2,421	2,933	0.83
1958	2,237	49,844	5.0	2.3	4.5	2,511	2,918	0.86
1959	2,290	51,737	2.4	3.8	4.4	2,525	2,959	0.85
1960	2,431	53,231	6.1	2.9	4.6	2,657	2,979	0.89
1961	2,168	54,741	-10.8	2.8	4.0	2,343	3,001	0.78
1962	2,602	58,475	20.0	6.8	4.4	2,798	3,147	0.89
1963	3,015	61,487	15.9	5.2	4.9	3,231	3,248	0.99
1964	2,856	65,610	- 5.3	6.7	4.4	3,032	3,401	0.89
1965	3,105	69,981	8.7	6.7	4.4	3,268	3,562	0.92
1966	3,425	74,844	10.3	6.9	4.6	3,586	3,739	0.96
1967	3,137	77,344	- 8.4	3.3	4.1	3,278	3,795	0.86
1968	3,244	81,864	3.4	5.8	4.0	3,379	3,955	0.85
1969	3,403	86,225	4.9	5.3	3.9	3,552	4,106	0.87
1970	3,128	88,390	- 8.1	2.5	3.5	3,324	4,150	0.80
1971	3,503	94,450	12.0	6.9	3.7	3,785	4,379	0.86
1972	3,429	100,248	- 2.1	6.1	3.4	3,755	4,598	0.82
1973	3,711	107,812	8.2	7.5	3.4	4,102	4,891	0.84
1974	3,986	111,678	7.4	3.6	3.6	4,429	4,994	0.89
1975	4,313	113,005	8.2	1.2	3.8	4,755	4,979	0.96
1976	4,568	119,612	5.9	5.8	3.8	4,960	5,202	0.95
1977	4,619	121,988	1.1	2.0	3.8	4,941	5,242	0.94
1978	4,839	126,347	4.7	3.6	3.8	5,128	5,373	0.95
1979	4,927	130,362	1.8	3.2	3.8	5,180	5,490	0.94
1980	5,026	131,765	2.0	1.1	3.8	5,238	5,481	0.96
1981	5,303	136,108	5.5	3.3	3.9	5,476	5,592	0.98
1982	5,174	130,065	- 2.4	- 4.4	4.0	5,284	5,280	1.00
1983	5,269	134,361	1.8	3.3	3.9	5,303	5,399	0.98
1984	5,311	141,097	0.8	5.0	3.8	5,265	5,616	0.94

Source: Saskatchewan Bureau of Statistics

Table 3: Comparison of Personal Income — Saskatchewan and Canada

	Personal Income (millions \$)		% Change in Personal Income		Sask. Personal Income as % of Canada Personal Income	Per Capita Personal Income		
	Sask.	Canada	Sask.	Canada		Sask. (\$)	Canada (\$)	Ratio
1952	1,214	18,592	13.6	10.7	6.5	1,440	1,286	1.12
1953	1,138	19,550	- 6.3	5.2	5.8	1,322	1,317	1.00
1954	823	19,717	-27.6	0.9	4.2	943	1,290	0.73
1955	1,057	21,265	28.4	7.9	5.0	1,204	1,355	0.89
1956	1,204	23,531	13.9	10.7	5.1	1,367	1,463	0.93
1957	1,035	25,170	-14.0	7.0	4.1	1,176	1,515	0.78
1958	1,155	26,651	11.6	5.9	4.3	1,297	1,560	0.83
1959	1,200	28,108	3.9	5.5	4.3	1,323	1,608	0.82
1960	1,352	29,595	12.6	5.3	4.6	1,477	1,656	0.89
1961	1,084	30,104	-19.8	1.7	3.6	1,172	1,651	0.71
1962	1,530	32,788	41.1	8.9	4.7	1,645	1,764	0.93
1963	1,688	34,829	10.3	6.2	4.8	1,809	1,840	0.98
1964	1,537	37,282	- 8.9	7.0	4.1	1,632	1,933	0.84
1965	1,786	41,071	16.2	10.2	4.3	1,880	2,091	0.90
1966	2,046	46,094	14.5	12.2	4.4	2,142	2,303	0.93
1967	1,932	50,579	- 5.6	9.7	3.8	2,018	2,482	0.81
1968	2,186	55,677	13.2	10.1	3.9	2,277	2,690	0.85
1969	2,271	61,804	3.9	11.0	3.7	2,370	2,943	0.81
1970	2,132	66,633	- 6.1	7.8	3.2	2,266	3,129	0.72
1971	2,556	74,092	19.9	11.2	3.4	2,760	3,435	0.80
1972	2,771	83,767	8.4	13.1	3.3	3,032	3,842	0.79
1973	3,673	97,832	32.5	16.8	3.8	4,058	4,438	0.91
1974	4,518	116,867	23.0	19.5	3.9	5,020	5,226	0.96
1975	5,660	136,205	25.3	16.5	4.2	6,240	6,001	1.04
1976	6,135	155,142	8.4	13.9	4.0	6,661	6,747	0.99
1977	6,311	171,516	2.9	10.6	3.7	6,751	7,370	0.92
1978	7,060	191,498	11.9	11.7	3.7	7,483	8,143	0.92
1979	7,934	215,367	12.4	12.5	3.7	8,340	9,069	0.92
1980	8,890	244,712	12.1	13.6	3.6	9,266	10,178	0.91
1981	11,448	288,529	28.8	17.9	4.0	11,823	11,853	1.00
1982	12,129	317,426	5.9	10.0	3.8	12,388	12,887	0.96
1983	12,425	336,984	2.4	6.2	3.7	12,505	13,542	0.92
1984	12,974	362,086	4.4	7.4	3.6	12,861	14,412	0.89

Source: Saskatchewan Bureau of Statistics

Table 4: Saskatchewan Gross Domestic Product at Market Prices, Consolidated Income Account — Current Dollars

	1974	1975	1976	1977	1978	1979	1980	1981	1982	1983	1984
	millions of dollars										
Wages, Salaries and Supplementary Labour Income ¹	2,189	2,730	3,236	3,611	3,932	4,482	5,176	5,972	6,536	6,946	7,367
Corporation Profits Before Taxes	597	630	649	721	958	1,175	1,487	1,385	908	1,496	1,945
Interest and Miscellaneous Investment Income	598	758	882	1,017	1,352	1,645	1,990	2,410	2,383	2,590	2,927
Net Income Received by Farm Operators from Farm Production	1,082	1,465	1,254	844	901	811	639	1,606	1,069	658	311
Adjustment on Grain Transactions	319	- 92	- 8	50	157	139	426	- 284	236	233	97
Net Income of Non-Farm Unincorporated Business including Rent	260	304	291	312	345	378	438	451	539	655	720
Inventory Valuation Adjustment	-105	- 68	- 56	- 110	- 140	- 220	- 206	- 179	- 123	- 93	- 106
Net Income at Factor Cost	4,941	5,727	6,248	6,446	7,505	8,410	9,950	11,363	11,548	12,484	13,261
Indirect Taxes Less Subsidies	581	492	599	729	666	906	1,351	1,519	1,291	1,180	1,068
Capital Consumption Allowance and Miscellaneous Valuation Adjustments	809	921	1,110	1,203	1,403	1,629	1,923	2,188	2,357	2,484	2,675
Total Income	6,330	7,140	7,957	8,377	9,573	10,944	13,223	15,070	15,196	16,148	17,005
Residual Error of Estimate	- 14	3	- 36	- 28	- 54	1	- 264	- 283	- 220	- 132	- 188
Percentage Error	0.2	0.0	0.5	0.3	0.6	0.0	2.0	1.9	1.5	0.8	1.1
Gross Domestic Product	6,316	7,143	7,921	8,350	9,519	10,945	12,959	14,787	14,975	16,017	16,817
Annual Rate of Change	30.8	13.1	10.9	5.4	14.0	15.0	18.4	14.1	1.3	7.0	5.0

¹Includes Military Pay and Allowances.
Source: Saskatchewan Bureau of Statistics.

Table 5: Saskatchewan Domestic Income — Percentage Distribution

	1974	1975	1976	1977	1978	1979	1980	1981	1982	1983	1984
	percent										
Wages, Salaries and Supplementary Labour Income ¹	44.3	47.7	51.8	56.0	52.4	53.3	52.0	52.6	56.6	55.6	55.6
Corporation Profits Before Taxes	12.1	11.0	10.4	11.2	12.8	14.0	14.9	12.2	7.9	12.0	14.7
Interest and Miscellaneous Investment Income	12.1	13.2	14.1	15.8	18.0	19.6	20.0	21.2	20.6	20.7	22.1
Net Income Received by Farm Operators from Farm Production	21.9	25.6	20.1	13.1	12.0	9.6	6.4	14.1	9.3	5.3	2.3
Adjustment on Grain Transactions	6.5	- 1.6	- 0.1	0.8	2.1	1.7	4.3	- 2.5	2.0	1.9	0.7
Net Income of Non-Farm Unincorporated Business including Rent	5.3	5.3	4.7	4.8	4.6	4.5	4.4	4.0	4.7	5.2	5.4
Inventory Valuation Adjustment	- 2.1	- 1.2	- 0.9	- 1.7	- 1.9	- 2.6	- 2.1	- 1.6	- 1.1	- 0.7	- 0.8
Net Income at Factor Cost	100.0	100.0	100.0	100.0	100.0	100.0	100.0	100.0	100.0	100.0	100.0

¹Includes Military Pay and Allowances.
Source: Saskatchewan Bureau of Statistics.

Table 6: Saskatchewan Gross Domestic Product at Market Prices, Consolidated Outlay Account — Current Dollars

	1974	1975	1976	1977	1978	1979	1980	1981	1982	1983	1984
	millions of dollars										
Personal Expenditure on Consumer Goods and Services	3,166	3,715	4,321	4,586	5,119	5,617	6,213	7,215	7,789	8,394	8,642
Government Current Expenditure on Goods and Services	956	1,247	1,391	1,573	1,707	1,856	2,179	2,475	2,887	3,168	3,347
Gross Fixed Capital Formation	1,284	1,822	2,204	2,310	2,450	3,182	3,398	4,052	3,570	3,828	3,883
Government:	218	317	355	355	342	406	406	456	436	460	529
Residential Construction	2	4	4	4	4	5	8	14	15	21	16
Non-Residential Construction	185	253	255	269	290	355	350	369	365	360	423
Machinery and Equipment	31	61	95	82	48	46	47	72	56	78	91
Business:	1,066	1,504	1,849	1,955	2,108	2,776	2,992	3,597	3,133	3,368	3,354
Residential Construction	253	380	549	592	577	682	577	494	471	609	512
Non-Residential Construction	280	346	431	510	556	813	1,032	1,406	1,312	1,350	1,430
Machinery and Equipment	532	778	870	853	975	1,282	1,383	1,697	1,350	1,409	1,411
Value of Physical Change in Inventories:	- 134	22	482	114	56	- 134	- 586	518	- 111	- 39	- 629
Non-Farm	98	38	65	76	- 90	52	26	149	- 266	35	236
Farm Inventories and Grain in Commercial Channels	- 232	- 16	417	38	146	- 186	- 611	369	154	- 74	- 865
Exports of Goods and Services	3,410	3,378	3,122	3,569	4,255	5,231	6,786	6,627	6,867	7,170	8,144
Imports of Goods and Services	2,379	3,038	3,635	3,831	4,121	4,806	5,295	6,383	6,247	6,636	6,757
Total Expenditures	6,302	7,145	7,886	8,322	9,465	10,946	12,695	14,505	14,755	15,885	16,629
Total Final Demand	8,681	10,183	11,520	12,153	13,587	15,752	17,990	20,887	21,002	22,521	23,386
Percentage Change											
In Total Final Demand	27.5	17.3	13.1	5.5	11.8	15.9	14.2	16.1	0.5	7.2	3.8
Residual Error of Estimate	14	- 3	36	28	54	- 1	264	283	220	132	188
Percentage Error	0.2	0.0	0.5	0.3	0.6	0.0	2.0	1.9	1.5	0.8	1.1
Gross Domestic Product	6,316	7,143	7,921	8,350	9,519	10,945	12,959	14,787	14,975	16,017	16,817
Annual Rate of Change	30.8	13.1	10.9	5.4	14.0	15.0	18.4	14.1	1.3	7.0	5.0

Source: Saskatchewan Bureau of Statistics.

Table 7: Saskatchewan Gross Domestic Expenditure—Percentage Distribution

	1974	1975	1976	1977	1978	1979	1980	1981	1982	1983	1984
	percent										
Personal Expenditure on Consumer Goods and Services	50.1	52.0	54.6	54.9	53.8	51.3	47.9	48.8	52.0	52.4	51.4
Durable Goods	9.0	8.9	9.3	8.9	9.0	8.4	7.6	7.7	7.8	8.0	7.9
Semi-Durable Goods	6.3	6.4	6.8	6.7	6.5	6.3	5.8	5.9	6.1	6.0	5.8
Non-Durable Goods	14.4	14.7	15.6	16.3	15.9	15.5	14.4	14.5	15.9	15.7	15.5
Services	20.4	22.0	22.9	23.0	22.4	21.2	20.1	20.7	22.2	22.6	22.3
Government Current Expenditure on Goods and Services	15.1	17.5	17.6	18.8	17.9	17.0	16.8	16.7	19.3	19.8	19.9
Federal	3.1	3.2	3.6	3.9	3.9	3.6	3.3	3.4	3.7	3.6	3.7
Provincial	4.3	6.1	5.4	5.7	5.6	5.1	5.2	5.7	7.1	7.3	7.3
Local	5.6	5.9	6.3	6.7	6.0	6.0	6.0	5.5	6.1	6.4	6.5
Hospitals	2.0	2.3	2.3	2.5	2.4	2.3	2.3	2.1	2.4	2.4	2.5
Gross Fixed Capital Formation	20.3	25.5	27.8	27.7	25.7	29.1	26.2	27.4	23.8	23.9	23.1
Government:	3.5	4.4	4.5	4.3	3.6	3.7	3.1	3.1	2.9	2.9	3.1
Residential Construction	0.0	0.1	0.1	0.0	0.0	0.0	0.1	0.1	0.1	0.1	0.1
Non-Residential Construction	2.9	3.5	3.2	3.2	3.0	3.2	2.7	2.5	2.4	2.3	2.5
Machinery and Equipment	0.5	0.9	1.2	1.0	0.5	0.4	0.4	0.5	0.4	0.5	0.5
Business:	16.9	21.1	23.3	23.4	22.1	25.4	23.1	24.3	20.9	21.0	19.9
Residential Construction	4.0	5.3	6.9	7.1	6.1	6.2	4.5	3.3	3.1	3.8	3.0
Non-Residential Construction	4.4	4.9	5.4	6.1	5.8	7.4	8.0	9.5	8.8	8.4	8.5
Machinery and Equipment	8.4	10.9	11.0	10.2	10.2	11.7	10.7	11.5	9.0	8.8	8.4
Value of Physical Change in Inventories:	-2.1	0.3	6.1	1.4	0.6	-1.2	-4.5	3.5	-0.7	-0.2	-3.7
Non-Farm	1.5	0.5	0.8	0.9	-0.9	0.5	0.2	1.0	-1.8	0.2	1.4
Farm Inventories and Grain in Commercial Channels	-3.7	-0.2	5.3	0.5	1.5	-1.7	-4.7	2.5	1.0	-0.5	-5.1
Exports of Goods and Services	54.0	47.3	39.4	42.7	44.7	47.8	52.4	44.8	45.9	44.8	48.4
Imports of Goods and Services	37.7	42.5	45.9	45.9	43.3	43.9	40.9	43.2	41.7	41.4	40.2
Residual Error of Estimate	0.2	0.0	0.5	0.3	0.6	0.0	2.0	1.9	1.5	0.8	1.1
Gross Domestic Product at Market Prices	100.0	100.0	100.0	100.0	100.0	100.0	100.0	100.0	100.0	100.0	100.0

Source: Saskatchewan Bureau of Statistics.

Table 8: Saskatchewan Personal Expenditure on Consumer Goods and Services

	1974	1975	1976	1977	1978	1979	1980	1981	1982	1983	1984
	millions of dollars										
Food, Beverages and Tobacco	610	693	795	862	976	1,114	1,215	1,371	1,506	1,652	1,730
Clothing and Footwear	209	240	287	297	323	358	398	450	483	511	521
Gross Rent, Fuel and Power	491	566	664	739	806	865	933	1,033	1,186	1,249	1,324
Furniture, Furnishings, and Household Equipment	363	421	465	484	549	632	691	773	791	857	836
Medical Care, Health Services	62	66	74	85	108	107	132	155	182	231	244
Transportation, Communication	495	563	684	716	760	831	934	1,098	1,118	1,146	1,149
Recreation, Entertainment, Education, and Cultural Services	333	402	478	491	575	588	636	809	899	1,023	1,095
Personal Goods and Services	512	637	740	774	870	974	1,108	1,312	1,412	1,492	1,506
Net Personal Expenditure											
Out-of-Province	90	127	135	138	152	148	165	213	212	234	238
Total Expenditure	3,166	3,715	4,321	4,586	5,119	5,617	6,213	7,215	7,789	8,394	8,642
Expenditure on:											
Durable Goods	567	636	738	743	857	916	990	1,141	1,170	1,287	1,322
Semi-Durable Goods	399	457	536	560	616	685	755	868	916	966	967
Non-Durable Goods	912	1,050	1,234	1,362	1,517	1,701	1,864	2,147	2,375	2,521	2,599
Services	1,288	1,572	1,813	1,920	2,129	2,315	2,604	3,059	3,329	3,620	3,753

Source: Saskatchewan Bureau of Statistics.

Table 9: Saskatchewan Exports by Commodity

	1974	1975	1976	1977	1978	1979	1980	1981	1982	1983	1984
	millions of dollars										
Grain Exports	1,845	1,805	1,474	1,631	1,837	2,190	2,964	2,689	3,128	3,166	3,267
Crude Oil Exports	578	500	505	675	771	977	1,370	1,249	1,418	1,706	2,017
Lumber Exports	10	11	14	27	33	32	21	27	25	35	37
Uranium Exports	14	16	45	75	261	258	232	258	251	121	354
Potash Exports	312	348	358	398	496	733	1,010	998	643	686	829
Electricity Exports	1	1	1	1	1	0	0	2	0	1	1
Exports of Manufactured Goods	341	381	389	414	478	583	657	771	766	795	878
Livestock Exports	89	81	71	66	67	71	77	66	76	75	79
Selected Exports Laden in Saskatchewan	149	154	166	177	186	242	290	380	358	372	449
Purchases in Saskatchewan by Non-Residents	69	82	97	106	125	144	164	189	202	213	233
Total Exports	3,410	3,378	3,122	3,569	4,255	5,231	6,786	6,627	6,867	7,170	8,144

Source: Saskatchewan Bureau of Statistics.

Table 10: Saskatchewan Imports from Canada and Abroad

	1974	1975	1976	1977	1978	1979	1980	1981	1982	1983	1984
	millions of dollars										
Crude Oil	102	104	79	97	96	161	241	294	336	341	368
Natural Gas	14	27	49	70	91	108	141	160	180	179	175
Coal and Electricity	2	7	9	15	11	10	19	8	7	8	4
Out-of-Country Purchases by Saskatchewan Travellers	74	101	117	128	144	141	160	187	186	215	227
Out-of-Province Purchases in Canada by Saskatchewan Travellers	85	107	114	117	133	151	169	216	229	232	243
Imports Cleared through Saskatchewan Custom Ports	314	398	457	469	560	756	814	1,017	1,010	1,010	1,096
Other Imports from Canada and Abroad	1,787	2,293	2,809	2,936	3,088	3,479	3,752	4,501	4,300	4,651	4,644
Total Imports	2,379	3,038	3,635	3,831	4,121	4,806	5,295	6,383	6,247	6,636	6,757

Source: Saskatchewan Bureau of Statistics.

Table 11: Saskatchewan Real Gross Domestic Product — Constant (1971) Dollars

	1974	1975	1976	1977	1978	1979	1980	1981	1982	1983	1984
	millions of dollars										
Personal Expenditure on Consumer Goods and Services	2,590	2,729	2,943	2,886	3,009	3,031	3,022	3,154	3,107	3,161	3,138
Government Current Expenditure on Goods and Services	728	853	843	848	861	863	895	905	931	942	945
Gross Fixed Capital Formation	983	1,237	1,375	1,322	1,284	1,521	1,488	1,626	1,331	1,384	1,385
Government:	158	209	218	200	178	192	175	176	158	164	187
Residential Construction	1	2	2	2	2	2	3	5	5	7	5
Non-Residential Construction	130	162	151	148	147	165	149	138	129	125	147
Machinery and Equipment	27	44	65	50	29	25	24	33	24	32	35
Business:	825	1,029	1,157	1,122	1,107	1,329	1,313	1,449	1,173	1,221	1,198
Residential Construction	171	226	292	285	258	283	223	172	161	212	176
Non-Residential Construction	209	233	263	288	293	389	455	562	485	476	502
Machinery and Equipment	445	570	602	550	556	657	634	715	527	533	519
Value of Physical Change in Inventories:	-24	33	207	65	21	-49	-170	137	-54	-54	-150
Non-Farm	62	19	49	40	-25	33	6	37	-95	-3	72
Farm Inventories and Grain in Commercial Channels	-86	14	158	25	46	-82	-176	100	41	-51	-223
Exports of Goods and Services	1,478	1,459	1,460	1,646	1,719	1,677	1,772	1,649	1,799	1,873	1,982
Imports of Goods and Services	1,778	1,997	2,280	2,163	2,083	2,115	2,084	2,270	2,017	2,081	2,048
Total Expenditures	3,977	4,314	4,548	4,604	4,811	4,928	4,923	5,201	5,098	5,225	5,252
Total Final Demand	5,755	6,312	6,828	6,767	6,894	7,043	7,007	7,471	7,115	7,307	7,300
Per Cent Change in											
Total Final Demand	5.8	9.7	8.2	-0.9	1.9	2.2	-0.5	6.6	-4.8	2.7	-0.1
Residual Error of Estimate	9	-2	21	15	27	0	102	101	76	43	59
Percentage Error	0.2	0.0	0.5	0.3	0.6	0.0	2.0	1.9	1.5	0.8	1.1
Gross Domestic Product in Constant (1971) Dollars	3,986	4,313	4,568	4,619	4,839	4,927	5,026	5,303	5,174	5,269	5,311
GDP Real Growth Rate	7.4	8.2	5.9	1.1	4.7	1.8	2.0	5.5	-2.4	1.8	0.8

Source: Saskatchewan Bureau of Statistics.

Table 12: Saskatchewan Gross Domestic Product — Constant (1971) Dollars — Percentage Distribution

	1974	1975	1976	1977	1978	1979	1980	1981	1982	1983	1984
	percent										
Personal Expenditure on Consumer Goods and Services	65.0	63.3	64.4	62.5	62.2	61.5	60.1	59.5	60.1	60.0	59.1
Durable Goods	12.3	11.3	11.7	10.9	11.4	11.1	10.7	10.9	10.4	10.7	10.6
Semi-Durable Goods	8.3	8.0	8.4	8.2	8.3	8.2	7.8	7.8	8.0	7.9	7.6
Non-Durable Goods	18.7	17.8	18.7	18.4	17.7	17.7	17.0	16.3	16.9	16.7	16.3
Services	25.8	26.1	25.7	24.9	24.8	24.6	24.5	24.5	24.8	24.8	24.6
Government Current Expenditure on Goods and Services	18.3	19.8	18.5	18.4	17.8	17.5	17.8	17.1	18.0	17.9	17.8
Federal	3.9	3.7	3.9	4.0	4.2	4.0	3.9	3.8	3.8	3.5	3.6
Provincial	5.2	6.9	5.6	5.7	5.7	5.5	5.4	5.7	6.6	6.6	6.5
Local	6.7	6.7	6.6	6.4	5.7	5.8	6.2	5.4	5.5	5.6	5.5
Hospitals	2.4	2.5	2.4	2.3	2.2	2.2	2.4	2.1	2.2	2.1	2.2
Gross Fixed Capital Formation	24.7	28.7	30.1	28.6	26.5	30.9	29.6	30.7	25.7	26.3	26.1
Government:	4.0	4.8	4.8	4.3	3.7	3.9	3.5	3.3	3.0	3.1	3.5
Residential Construction	0.0	0.1	0.0	0.0	0.0	0.0	0.1	0.1	0.1	0.1	0.1
Non-Residential Construction	3.3	3.8	3.3	3.2	3.0	3.4	3.0	2.6	2.5	2.4	2.8
Machinery and Equipment	0.7	1.0	1.4	1.1	0.6	0.5	0.5	0.6	0.5	0.6	0.7
Business:	20.7	23.9	25.3	24.3	22.9	27.0	26.1	27.3	22.7	23.2	22.5
Residential Construction	4.3	5.3	6.4	6.2	5.3	5.7	4.4	3.3	3.1	4.0	3.3
Non-Residential Construction	5.2	5.4	5.8	6.2	6.1	7.9	9.1	10.6	9.4	9.0	9.5
Machinery and Equipment	11.2	13.2	13.2	11.9	11.5	13.3	12.6	13.5	10.2	10.1	9.8
Value of Physical Change in Inventories:	-0.6	0.8	4.5	1.4	0.4	-1.0	-3.4	2.6	-1.0	-1.0	-2.8
Non-Farm	1.5	0.5	1.1	0.9	-0.5	0.7	0.1	0.7	-1.8	-0.1	1.4
Farm Inventories and Grain in Commercial Channels	-2.2	0.3	3.5	0.5	1.0	-1.7	-3.5	1.9	0.8	-1.0	-4.2
Exports of Goods and Services	37.1	33.8	32.0	35.6	35.5	34.0	35.2	31.1	34.8	35.5	37.3
Imports of Goods and Services	44.6	46.3	49.9	46.8	43.1	42.9	41.5	42.8	39.0	39.5	38.6
Residual Error of Estimate	0.2	0.0	0.5	0.3	0.6	0.0	2.0	1.9	1.5	0.8	1.1
Gross Domestic Product in Constant (1971) Dollars	100.0	100.0	100.0	100.0	100.0	100.0	100.0	100.0	100.0	100.0	100.0

Source: Saskatchewan Bureau of Statistics.

Table 13: Saskatchewan Personal Expenditure on Consumer Goods and Services — Constant (1971) Dollars

	1974	1975	1976	1977	1978	1979	1980	1981	1982	1983	1984
	millions of dollars										
Food, Beverages and Tobacco	474	483	529	523	526	540	535	544	551	563	564
Clothing and Footwear	178	194	221	215	223	226	228	240	242	244	241
Gross Rent, Fuel and Power	425	435	441	441	447	449	445	434	440	434	441
Furniture, Furnishings, and Household Equipment	304	312	324	318	352	373	370	372	351	362	345
Medical Care, Health Services	56	58	76	80	89	86	90	93	99	112	111
Transportation, Communication	440	450	497	475	475	479	478	494	463	456	441
Recreation, Entertainment, Education and Cultural Services	271	291	319	308	350	331	329	385	394	419	435
Personal Goods and Services	370	413	442	435	455	464	468	498	484	479	471
Net Personal Expenditure											
Out-of-Province	71	93	93	91	92	81	80	93	85	92	89
Total Expenditure in Constant (1971) Dollars	2,590	2,729	2,943	2,886	3,009	3,031	3,022	3,154	3,107	3,161	3,138
Expenditure on:											
Durable Goods	488	489	533	503	554	546	540	578	538	563	563
Semi-Durable Goods	331	347	385	380	403	402	393	416	413	416	404
Non-Durable Goods	744	769	852	852	854	871	856	862	876	878	866
Services	1,026	1,124	1,172	1,152	1,199	1,211	1,233	1,298	1,281	1,305	1,305

Source: Saskatchewan Bureau of Statistics.

Table 14: Saskatchewan Exports by Commodity — Constant (1971) Dollars

	1974	1975	1976	1977	1978	1979	1980	1981	1982	1983	1984
	millions of dollars										
Grain Exports	584	634	604	748	775	721	812	696	906	929	928
Crude Oil Exports	178	140	130	146	146	137	139	112	125	143	162
Lumber Exports	7	8	9	14	14	12	9	12	11	14	15
Uranium Exports	8	10	26	33	69	50	43	48	50	25	90
Potash Exports	232	189	209	231	261	289	289	261	206	267	257
Electricity Exports	3	3	3	3	3	0	0	1	0	1	0
Exports of Manufactured Goods	238	241	235	232	244	261	262	281	263	264	278
Livestock Exports	69	78	73	64	40	30	34	30	40	36	36
Selected Exports Laden in Saskatchewan	102	96	105	108	93	100	105	126	118	115	132
Purchases in Saskatchewan by Non-Residents	57	61	67	67	73	76	79	81	80	79	83
Total Exports in Constant (1971) Dollars	1,478	1,459	1,460	1,646	1,719	1,677	1,772	1,649	1,799	1,873	1,982

Source: Saskatchewan Bureau of Statistics.

Table 15: Saskatchewan Imports from Canada and Abroad — Constant (1971) Dollars

	1974	1975	1976	1977	1978	1979	1980	1981	1982	1983	1984
	millions of dollars										
Crude Oil	50	41	26	27	22	33	39	41	36	29	31
Natural Gas	7	7	8	9	10	10	9	10	10	10	9
Coal and Electricity	3	5	4	5	4	5	6	3	2	2	1
Out-of-Country Purchases by Saskatchewan Travellers	61	76	84	85	89	79	79	83	78	87	88
Out-of-Province Purchases in Canada by Saskatchewan Travellers	68	77	77	73	76	79	80	91	87	84	84
Imports Cleared through Saskatchewan Custom Ports	248	269	297	272	285	336	337	379	338	330	348
Other Imports from Canada and Abroad	1,341	1,522	1,785	1,693	1,598	1,574	1,534	1,663	1,466	1,539	1,486
Total Imports in Constant (1971) Dollars	1,778	1,997	2,280	2,163	2,083	2,115	2,084	2,270	2,017	2,081	2,048

Source: Saskatchewan Bureau of Statistics.

Table 16: Saskatchewan Implicit Price Indexes, Gross Domestic Expenditure, 1971 = 100.0

	1974	1975	1976	1977	1978	1979	1980	1981	1982	1983	1984
Personal Expenditure on Consumer Goods and Services	122.2	136.1	146.8	158.9	170.1	185.3	205.6	228.8	250.7	265.5	275.4
Government Current Expenditure on Goods and Services	131.2	146.2	165.0	185.5	198.2	215.0	243.4	273.4	310.1	336.2	354.0
Gross Fixed Capital Formation	130.6	147.2	160.3	174.8	190.8	209.2	228.3	249.3	268.2	276.5	280.4
Government:	138.3	152.2	162.5	177.9	192.5	211.1	231.3	258.7	276.7	280.9	282.6
Residential Construction	147.9	167.7	187.7	207.9	223.8	241.1	258.7	286.5	291.9	287.4	290.6
Non-Residential Construction	142.5	155.9	169.4	182.1	197.4	215.1	235.7	266.8	283.4	289.0	287.8
Machinery and Equipment	117.3	138.0	145.7	164.2	165.7	182.3	200.1	220.0	237.3	247.4	260.1
Business:	129.1	146.2	159.8	174.2	190.5	208.9	227.9	248.1	267.0	275.9	280.0
Residential Construction	147.9	167.7	187.7	207.9	223.8	241.1	258.7	286.5	291.9	287.4	290.6
Non-Residential Construction	134.1	148.9	163.9	177.3	189.7	208.8	226.6	250.3	270.3	283.7	284.9
Machinery and Equipment	119.6	136.6	144.5	155.2	175.5	195.2	218.1	237.2	256.4	264.5	271.7
Exports of Goods and Services	230.7	231.5	213.8	216.9	247.6	312.0	383.1	401.8	381.7	382.9	410.9
Imports of Goods and Services	133.8	152.1	159.4	177.1	197.8	227.2	254.1	281.2	309.7	318.8	330.0
Gross Domestic Expenditure	158.5	165.6	173.4	180.8	196.7	222.1	257.9	278.9	289.4	304.0	316.6

Source: Saskatchewan Bureau of Statistics.

Table 17: Saskatchewan Sources and Disposition of Personal Income

	1974	1975	1976	1977	1978	1979	1980	1981	1982	1983	1984
	millions of dollars										
Wages, Salaries and Supplementary Labour Income ¹	2,189	2,730	3,236	3,611	3,932	4,482	5,176	5,972	6,536	6,946	7,367
Net Income Received by Farm Operators from Farm Production	1,082	1,465	1,254	844	901	811	639	1,606	1,069	658	311
Net Income of Non-Farm Unincorporated Business including Rent	260	304	291	312	345	378	438	451	539	655	720
Interest, Dividends and Miscellaneous Investment Income	397	492	588	646	873	1,089	1,269	1,807	2,063	1,917	2,175
Current Transfers:											
From Government:											
Transfers to Persons	565	639	741	867	977	1,112	1,314	1,545	1,846	2,144	2,324
Capital Assistance	7	8	3	5	2	26	12	18	34	58	29
From Corporations	9	11	11	13	15	18	21	26	19	21	22
From Non-Residents	9	10	11	13	16	18	21	22	24	25	26
Personal Income	4,518	5,660	6,135	6,311	7,060	7,934	8,890	11,448	12,129	12,425	12,974
Deduct:											
Current Transfers to Government	697	858	1,005	1,074	1,101	1,156	1,316	1,739	1,921	2,153	2,196
Equals:											
Personal Disposable Income	3,821	4,802	5,130	5,237	5,959	6,778	7,574	9,709	10,208	10,272	10,778
Deduct:											
Personal Expenditure on Consumer Goods and Services	3,166	3,715	4,321	4,586	5,119	5,617	6,213	7,215	7,789	8,394	8,642
Current Transfers to Corporations (Interest on the Consumer Debt)	44	49	58	64	78	120	153	218	229	170	165
Current Transfers to Non-Residents	9	11	10	10	11	12	13	15	16	17	17
Equals:											
Personal Savings	601	1,027	740	577	752	1,029	1,195	2,261	2,174	1,691	1,954

¹Includes Military Pay and Allowances.

Source: Saskatchewan Bureau of Statistics.

Table 18: Saskatchewan Personal Income by Source — Percentage Distribution

	1974	1975	1976	1977	1978	1979	1980	1981	1982	1983	1984
	percent										
Wages, Salaries and Supplementary Labour Income ¹	48.4	48.2	52.7	57.2	55.7	56.5	58.2	52.2	53.9	55.9	56.8
Net Income Received by Farm Operators from Farm Production	23.9	25.9	20.4	13.4	12.8	10.2	7.2	14.0	8.8	5.3	2.4
Net Income of Non-Farm Unincorporated Business including Rent	5.8	5.4	4.7	4.9	4.9	4.8	4.9	3.9	4.4	5.3	5.6
Interest, Dividends and Miscellaneous Investment Income	8.8	8.7	9.6	10.2	12.4	13.7	14.3	15.8	17.0	15.4	16.8
Current Transfers (Excluding Interest on the Public Debt)	13.1	11.8	12.5	14.2	14.3	14.8	15.4	14.1	15.9	18.1	18.5
Total	100.0	100.0	100.0	100.0	100.0	100.0	100.0	100.0	100.0	100.0	100.0

¹Includes Military Pay and Allowances.

Source: Saskatchewan Bureau of Statistics.

Table 19: Saskatchewan Gross Domestic Product at Factor Cost, by Industry

	1974	1975	1976	1977	1978	1979	1980	1981	1982	1983	1984
	millions of dollars										
Agriculture	1,719	1,755	1,743	1,449	1,703	1,713	1,966	2,352	2,398	1,985	1,530
Forestry	14	18	16	17	19	22	25	26	26	37	42
Mining	421	437	482	609	819	1,025	1,465	1,466	1,129	1,574	2,129
Construction	311	401	492	541	504	613	689	780	715	821	761
Total Primary Industries and Construction	2,465	2,611	2,732	2,615	3,045	3,372	4,146	4,623	4,269	4,418	4,462
Manufacturing	342	416	441	454	532	645	793	955	866	825	927
Transportation, Communication and Storage	439	484	553	614	727	818	911	1,019	1,089	1,167	1,285
Utilities	111	139	168	191	220	256	260	298	364	375	439
Trade	553	699	808	799	895	1,048	1,198	1,403	1,472	1,484	1,564
Finance, Insurance and Real Estate	607	746	867	991	1,236	1,346	1,590	1,715	1,892	2,497	2,714
Services	824	1,019	1,171	1,269	1,465	1,680	1,950	2,230	2,485	2,635	2,866
Public Administration	408	534	618	716	788	873	1,024	1,308	1,468	1,567	1,679
Gross Domestic Product at Factor Cost	5,749	6,648	7,358	7,649	8,907	10,039	11,872	13,551	13,905	14,968	15,936

Source: Saskatchewan Bureau of Statistics.

Table 20: Saskatchewan Gross Domestic Product at Factor Cost, by Industry — Percentage Distribution

	1974	1975	1976	1977	1978	1979	1980	1981	1982	1983	1984
	percent										
Agriculture	29.9	26.4	23.7	18.9	19.1	17.1	16.6	17.4	17.2	13.3	9.6
Forestry	0.2	0.3	0.2	0.2	0.2	0.2	0.2	0.2	0.2	0.2	0.3
Mining	7.3	6.6	6.5	8.0	9.2	10.2	12.3	10.8	8.1	10.5	13.4
Construction	5.4	6.0	6.7	7.1	5.7	6.1	5.8	5.8	5.1	5.5	4.8
Total Primary Industries and Construction	42.9	39.3	37.1	34.2	34.2	33.6	34.9	34.1	30.7	29.5	28.0
Manufacturing	6.0	6.3	6.0	5.9	6.0	6.4	6.7	7.0	6.2	5.5	5.8
Transportation, Communication and Storage	7.6	7.3	7.5	8.0	8.2	8.1	7.7	7.5	7.8	7.8	8.1
Utilities	1.9	2.1	2.3	2.5	2.5	2.6	2.2	2.2	2.6	2.5	2.8
Trade	9.6	10.5	11.0	10.4	10.0	10.4	10.1	10.4	10.6	9.9	9.8
Finance, Insurance and Real Estate	10.6	11.2	11.8	13.0	13.9	13.4	13.4	12.7	13.6	16.7	17.0
Services	14.3	15.3	15.9	16.6	16.4	16.7	16.4	16.5	17.9	17.6	18.0
Public Administration	7.1	8.0	8.4	9.4	8.8	8.7	8.6	9.7	10.6	10.5	10.5
Gross Domestic Product at Factor Cost	100.0	100.0	100.0	100.0	100.0	100.0	100.0	100.0	100.0	100.0	100.0

Source: Saskatchewan Bureau of Statistics.

Table 21: Saskatchewan Wages, Salaries, and Supplementary Labour Income, by Industry

	1974	1975	1976	1977	1978	1979	1980	1981	1982	1983	1984
	millions of dollars										
Agriculture	70	90	113	132	149	165	182	200	218	234	248
Forestry	11	15	13	14	14	18	19	21	21	33	37
Mining	91	121	143	168	194	235	286	367	386	381	437
Construction	208	268	324	375	333	403	436	474	387	511	468
Total Primary Industries and Construction	381	494	592	688	690	821	922	1,063	1,012	1,159	1,190
Manufacturing	184	220	254	280	291	336	390	462	476	506	547
Transportation, Communication and Storage	246	294	335	357	418	478	554	642	737	778	817
Utilities	40	48	71	81	90	97	113	131	150	158	166
Retail and Wholesale Trade	360	459	543	569	617	710	799	919	983	973	1,010
Finance, Insurance and Real Estate	114	143	180	216	243	275	324	389	462	480	510
Services	609	760	882	993	1,109	1,262	1,456	1,657	1,884	2,027	2,212
Public Administration ¹	254	313	378	426	474	503	617	711	832	865	914
Total Wages, Salaries, and Supplementary Labour Income	2,189	2,730	3,236	3,611	3,932	4,482	5,176	5,972	6,536	6,946	7,367

¹Includes Military Pay and Allowances.

Source: Saskatchewan Bureau of Statistics.

Table 22: Saskatchewan Wages, Salaries and Supplementary Labour Income, by Industry — Percentage Distribution

	1974	1975	1976	1977	1978	1979	1980	1981	1982	1983	1984
	percent										
Agriculture	3.2	3.3	3.5	3.7	3.8	3.7	3.5	3.4	3.3	3.4	3.4
Forestry	0.5	0.5	0.4	0.4	0.4	0.4	0.4	0.4	0.3	0.5	0.5
Mining	4.2	4.4	4.4	4.6	4.9	5.2	5.5	6.1	5.9	5.5	5.9
Construction	9.5	9.8	10.0	10.4	8.5	9.0	8.4	7.9	5.9	7.4	6.4
Total Primary Industries and Construction	17.4	18.1	18.3	19.1	17.6	18.3	17.8	17.8	15.5	16.7	16.2
Manufacturing	8.4	8.1	7.8	7.7	7.4	7.5	7.5	7.7	7.3	7.3	7.4
Transportation, Communication and Storage	11.3	10.8	10.3	9.9	10.6	10.7	10.7	10.7	11.3	11.2	11.1
Utilities	1.8	1.8	2.2	2.3	2.3	2.2	2.2	2.2	2.3	2.3	2.3
Retail and Wholesale Trade	16.5	16.8	16.8	15.7	15.7	15.8	15.4	15.4	15.0	14.0	13.7
Finance, Insurance and Real Estate	5.2	5.2	5.6	6.0	6.2	6.1	6.3	6.5	7.1	6.9	6.9
Services	27.8	27.8	27.3	27.5	28.2	28.2	28.1	27.7	28.8	29.2	30.0
Public Administration ¹	11.6	11.5	11.7	11.8	12.0	11.2	11.9	11.9	12.7	12.4	12.4
Total Wages, Salaries, and Supplementary Labour Income	100.0	100.0	100.0	100.0	100.0	100.0	100.0	100.0	100.0	100.0	100.0

¹Includes Military Pay and Allowances.

Source: Saskatchewan Bureau of Statistics.

Table 23: Saskatchewan Gross Fixed Capital Formation by Industry on a Gross Domestic Product Basis

	1974	1975	1976	1977	1978	1979	1980	1981	1982	1983	1984
	millions of dollars										
Agriculture	396	550	622	566	681	854	908	1,036	754	758	761
Mining	85	131	120	155	236	324	450	531	653	761	819
Construction and Forestry	20	27	41	38	40	53	58	66	61	63	66
Total Primary Industries and Construction	501	708	783	759	957	1,230	1,416	1,633	1,468	1,583	1,646
Manufacturing	52	60	84	75	53	111	115	124	82	104	115
Transportation	53	54	54	85	60	90	148	453	340	136	123
Communication	57	79	90	104	99	90	131	156	147	123	95
Miscellaneous Utilities	42	86	122	145	126	153	182	222	234	360	342
Retail and Wholesale Trade	37	33	33	39	62	111	130	163	124	140	154
Finance, Insurance and Real Estate	282	427	606	665	657	824	738	652	615	785	709
Commercial Services	37	50	65	66	78	140	105	174	107	122	156
Institutions	40	70	74	88	78	100	109	112	112	142	161
Public Administration	184	255	294	284	281	334	323	364	341	332	383
Total Gross Fixed Capital Formation	1,284	1,822	2,204	2,310	2,450	3,182	3,398	4,052	3,570	3,828	3,883

Source: Saskatchewan Bureau of Statistics.

Table 24: Saskatchewan Gross Fixed Capital Formation by Industry on a Gross Domestic Product Basis—Percentage Distribution

	1974	1975	1976	1977	1978	1979	1980	1981	1982	1983	1984
	percent										
Agriculture	30.8	30.2	28.2	24.5	27.8	26.8	26.7	25.6	21.1	19.8	19.6
Mining	6.6	7.2	5.5	6.7	9.6	10.2	13.2	13.1	18.3	19.9	21.1
Construction and Forestry	1.6	1.5	1.8	1.7	1.6	1.7	1.7	1.6	1.7	1.7	1.7
Total Primary Industries and Construction	39.0	38.9	35.5	32.9	39.0	38.6	41.7	40.3	41.1	41.3	42.4
Manufacturing	4.1	3.3	3.8	3.3	2.1	3.5	3.4	3.1	2.3	2.7	3.0
Transportation	4.1	2.9	2.4	3.7	2.5	2.8	4.3	11.2	9.5	3.6	3.2
Communication	4.4	4.3	4.1	4.5	4.0	2.8	3.8	3.9	4.1	3.2	2.4
Miscellaneous Utilities	3.3	4.7	5.5	6.3	5.1	4.8	5.4	5.5	6.5	9.4	8.8
Retail and Wholesale Trade	2.9	1.8	1.5	1.7	2.5	3.5	3.8	4.0	3.5	3.7	4.0
Finance, Insurance and Real Estate	22.0	23.4	27.5	28.8	26.8	25.9	21.7	16.1	17.2	20.5	18.3
Commercial Services	2.9	2.8	3.0	2.9	3.2	4.4	3.1	4.3	3.0	3.2	4.0
Institutions	3.1	3.8	3.3	3.8	3.2	3.1	3.2	2.8	3.1	3.7	4.1
Public Administration	14.3	14.0	13.3	12.3	11.5	10.5	9.5	9.0	9.5	8.7	9.9
Total Gross Fixed Capital Formation	100.0	100.0	100.0	100.0	100.0	100.0	100.0	100.0	100.0	100.0	100.0

Source: Saskatchewan Bureau of Statistics.

Table 25: Saskatchewan Gross Fixed Capital Formation by Industry on a Gross Domestic Product Basis—Constant (1971) Dollars

	1974	1975	1976	1977	1978	1979	1980	1981	1982	1983	1984
	millions of dollars										
Agriculture	322	396	417	356	382	424	402	423	289	276	269
Mining	65	87	74	86	121	152	195	203	233	266	288
Construction and Forestry	17	20	29	24	23	27	27	28	24	24	24
Total Primary Industries and Construction	404	503	519	467	526	603	624	654	546	566	582
Manufacturing	42	43	55	44	28	52	49	47	29	37	40
Transportation	42	37	34	48	32	44	66	183	127	48	41
Communication	46	58	61	65	55	46	65	72	62	51	39
Miscellaneous Utilities	32	56	75	83	66	72	78	85	83	121	111
Retail and Wholesale Trade	30	26	26	29	36	58	62	71	50	56	59
Finance, Insurance and Real Estate	193	259	329	328	302	355	297	237	215	278	248
Commercial Services	32	40	49	47	51	84	58	90	52	57	72
Institutions	31	49	48	54	44	51	51	47	43	53	59
Public Administration	132	166	180	157	144	156	138	139	122	117	134
Total Gross Fixed Capital Formation in Constant (1971) Dollars	983	1,237	1,375	1,322	1,284	1,521	1,488	1,626	1,331	1,384	1,385

Source: Saskatchewan Bureau of Statistics.

Table 26: Saskatchewan Gross Fixed Capital Formation by Industry on a Gross Domestic Product Basis—Constant (1971) Dollars—Percentage Distribution

	1974	1975	1976	1977	1978	1979	1980	1981	1982	1983	1984
	percent										
Agriculture	32.7	32.0	30.3	26.9	29.8	27.9	27.0	26.0	21.7	19.9	19.4
Mining	6.7	7.1	5.4	6.5	9.4	10.0	13.1	12.5	17.5	19.2	20.8
Construction and Forestry	1.7	1.6	2.1	1.9	1.8	1.8	1.8	1.7	1.8	1.7	1.7
Total Primary Industries and Construction	41.1	40.7	37.8	35.3	41.0	39.6	41.9	40.2	41.0	40.9	42.0
Manufacturing	4.2	3.5	4.0	3.4	2.2	3.4	3.3	2.9	2.2	2.7	2.9
Transportation	4.2	3.0	2.5	3.6	2.5	2.9	4.5	11.3	9.5	3.5	3.0
Communication	4.7	4.7	4.5	4.9	4.3	3.0	4.3	4.4	4.7	3.7	2.8
Miscellaneous Utilities	3.2	4.5	5.4	6.2	5.1	4.7	5.2	5.2	6.2	8.8	8.0
Retail and Wholesale Trade	3.1	2.1	1.9	2.2	2.8	3.8	4.2	4.4	3.8	4.0	4.2
Finance, Insurance and Real Estate	19.7	20.9	23.9	24.8	23.5	23.3	20.0	14.6	16.2	20.1	17.9
Commercial Services	3.3	3.2	3.6	3.5	3.9	5.5	3.9	5.6	3.9	4.1	5.2
Institutions	3.1	3.9	3.5	4.1	3.5	3.3	3.4	2.9	3.2	3.8	4.3
Public Administration	13.4	13.4	13.1	11.9	11.2	10.3	9.3	8.6	9.2	8.4	9.7
Total Gross Fixed Capital Formation in Constant (1971) Dollars	100.0	100.0	100.0	100.0	100.0	100.0	100.0	100.0	100.0	100.0	100.0

Source: Saskatchewan Bureau of Statistics.

Table 27: Saskatchewan Government Current Expenditure on Goods and Services

	1974	1975	1976	1977	1978	1979	1980	1981	1982	1983	1984
Millions of Dollars											
Federal	195	227	281	326	369	395	431	501	557	571	615
Provincial	275	433	425	479	535	554	676	842	1,062	1,171	1,224
Local	357	425	499	560	575	658	771	813	909	1,032	1,090
Hospitals	128	161	185	207	227	247	299	317	357	392	416
Canada Pension Plan	1	1	1	1	1	1	1	1	2	2	2
Total	956	1,247	1,391	1,573	1,707	1,856	2,179	2,475	2,887	3,168	3,347
Millions of Constant (1971) Dollars											
Federal	153	157	177	185	200	197	195	201	194	185	190
Provincial	209	299	258	263	276	270	270	302	340	349	346
Local	268	290	300	296	276	288	312	289	283	296	294
Hospitals	97	106	108	104	109	108	119	113	112	111	114
Canada Pension Plan	1	1	1	1	1	1	0	0	1	1	1
Total	728	853	843	848	861	863	895	905	931	942	945

Source: Saskatchewan Bureau of Statistics.

Table 28: Saskatchewan Government Investment Income

	1974	1975	1976	1977	1978	1979	1980	1981	1982	1983	1984
	millions of dollars										
Federal:											
Interest on Government-Held Public Funds	19	23	28	33	39	46	54	71	89	94	106
Interest on Loans, Advances and Investments	60	70	81	96	119	131	141	167	205	210	213
Remittances from Government Business Enterprises	5	0	-8	-1	14	12	-4	-18	-8	-10	-12
Royalties	1	2	1	1	1	1	2	1	1	1	1
Total Federal	85	95	102	129	173	190	193	221	287	295	308
Provincial:											
Interest on Government-Held Public Funds	6	5	8	11	16	19	23	26	36	46	55
Interest on Loans, Advances and Investments	60	104	118	135	161	191	209	273	303	330	351
Remittances from Government Business Enterprises	10	16	20	29	33	39	83	99	65	108	50
Royalties	217	261	265	291	414	520	642	532	516	649	687
Total Provincial	293	386	411	467	624	769	957	930	920	1,132	1,143
Local:											
Interest on Government-Held Public Funds	3	3	3	3	4	4	4	4	4	5	5
Interest on Loans, Advances and Investments	0	0	0	0	0	0	0	0	0	0	0
Remittances from Government Business Enterprises	6	6	7	10	12	13	12	12	16	17	19
Total Local	8	9	10	13	16	17	16	16	20	22	24
Hospitals	1	1	1	1	2	2	3	5	6	6	6
Canada Pension Plan	22	26	33	39	46	55	65	80	99	115	131
Total	408	517	556	649	861	1,033	1,234	1,251	1,332	1,570	1,612

Source: Saskatchewan Bureau of Statistics.